

NE 1/4 SECTION 10 T2N R32E WM NW 1/4 SECTION 11 T2N R32E WM

RECEIVED BY  
 Umatilla County Surveyor  
 Date: 4/10/23  
 Rec'd By: CT  
 No.: 23-033-B

NARRATIVE

THE PURPOSE OF THIS SURVEY IS TO RESOLVE THE EXISTING RIGHT OF WAY FOR THE INTERSECTION OF SW FIRST STREET WITH SW COURT STREET AND WITH SW DORION STREET. THIS SURVEY PERPETUATES THOSE SURVEY MONUMENTS IN JEOPARDY OF BEING DESTROYED BY A FUTURE SIGNAL IMPROVEMENT PROJECT. THIS SURVEY IS ALSO TO CLARIFY SOME ERRORS IN PREVIOUS SURVEYS PERFORMED BY THE OREGON DEPARTMENT OF TRANSPORTATION AND THEIR CONTRACTORS. THIS SURVEY MEETS THE REQUIREMENTS FOR A RECOVERY SURVEY AS OUTLINED IN THE OREGON REVISED STATUTES, SECTION 209.155. THIS SURVEY WAS PERFORMED IN INTERNATIONAL FEET UNITS. THIS SURVEY WAS PERFORMED BETWEEN THE MONTHS OF JANUARY AND APRIL 2022. THE SURVEY EQUIPMENT USED CONSISTED OF LEICA GS-14 RECEIVERS, LEICA TS16 TOTAL STATIONS, AND CS20 SURVEY CONTROLLERS.

PRIMARY CONTROL WAS BROUGHT INTO THE PROJECT USING THE OREGON REAL TIME GNSS NETWORK (ORGN) TO ESTABLISH HORIZONTAL POSITIONS ON GPS CONTROL STATIONS 1 THROUGH 7 BY INCORPORATING THE AVERAGE OF TWO SEPARATE 300 EPOCH SESSIONS UNDER DIFFERENT SATELLITE CONSTELLATIONS. THE HORIZONTAL DATUM USED FOR THIS PROJECT IS NAD83 (2011) EPOCH 2010, OREGON COORDINATE REFERENCE SYSTEM (OCRS), PENDLETON ZONE. THE PENDLETON ZONE PROJECTION PARAMETERS ARE PUBLISHED IN OREGON ADMINISTRATIVE RULES (OAR) 734-005-015. BASIS OF BEARINGS AND COORDINATES ARE BASED UPON COUNTY SURVEY 17-070-B FILED JUNE 7, 2017 IN THE UMATILLA COUNTY SURVEYORS OFFICE. THE VERTICAL DATUM ON THIS PROJECT IS NAVD88. THE PUBLISHED ELEVATION FOR NATIONAL GEODETIC SURVEY FIRST ORDER CLASS 2 BENCHMARK P39 (PID RBO493) WAS HELD AND A CLOSED LEVEL CIRCUIT WAS RUN THROUGH CONTROL POINTS 1 THROUGH 7.

SW COURT AVENUE

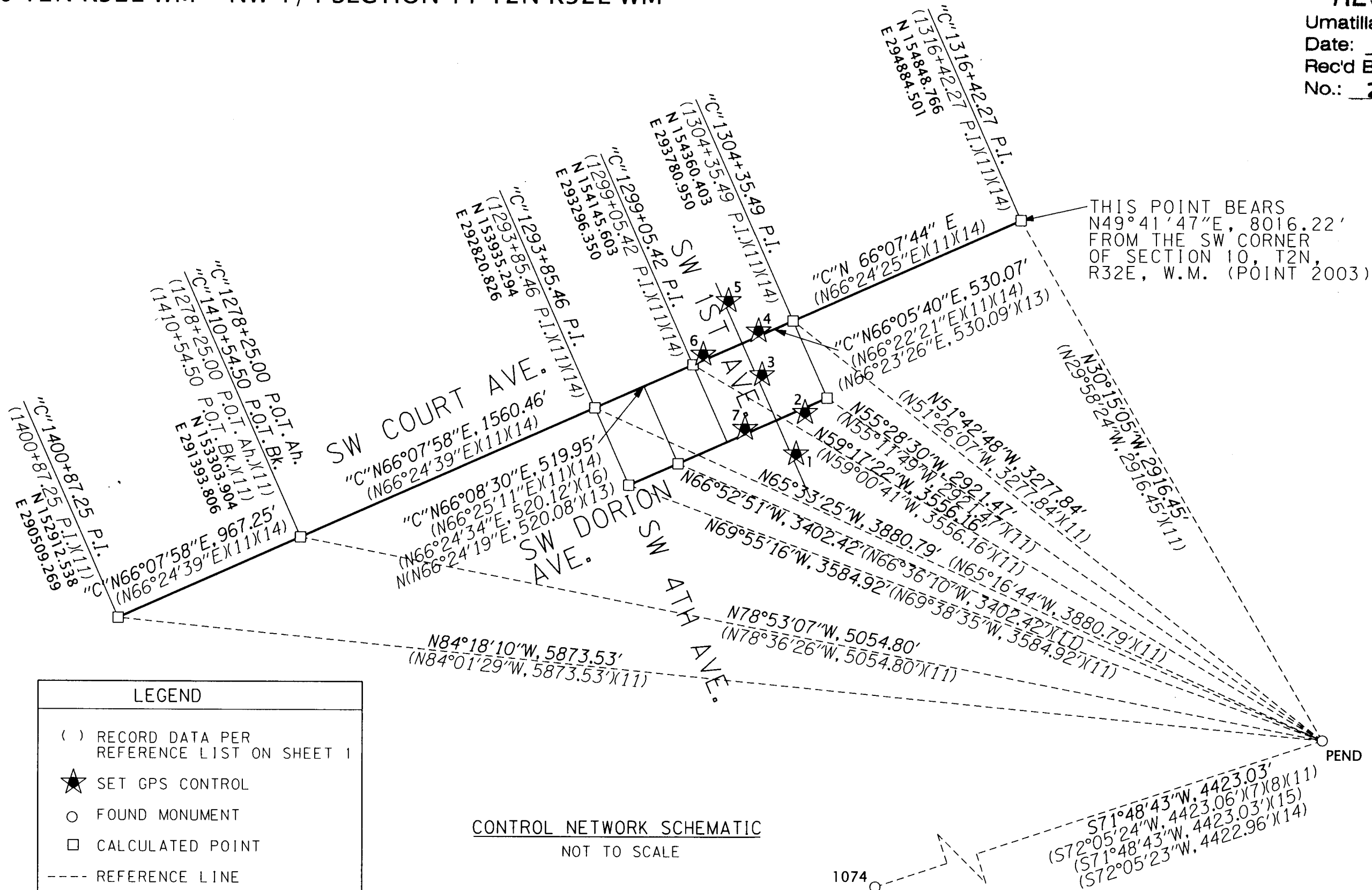
AROUND THE YEAR 2007 OR 2008, THERE WAS A STREET IMPROVEMENT PROJECT ON COURT AND DORION AVENUE WHERE THERE WERE CITY OF PENDLETON CENTER LINE MONUMENTS SHOWN ON OREGON DEPARTMENT OF TRANSPORTATION DRAWING AS POINTS NUMBER 1003, 1004 AND 1005 THAT WERE TIED AND HELD TO RE-ESTABLISH THE CENTER LINE OF COURT AVENUE. THESE MONUMENTS WERE ORIGINALLY SET IN THE 1980'S OR 1990'S BY THE CITY OF PENDLETON AND WERE DESTROYED DURING SAID STREET IMPROVEMENT PROJECT. IN 2011, THE DEPARTMENT OF TRANSPORTATION PROVIDED COORDINATES FOR THE CONTROL POINTS AND FOR THE DESTROYED MONUMENTS TO A CONSULTANT TO REPLACE THE CENTER LINE MONUMENTS. FROM REVIEW OF DEPARTMENT RECORDS, THE COORDINATES FOR THE CONTROL POINTS MATCH, BUT THE COORDINATES FOR THE DESTROYED MONUMENTS DID NOT MATCH THE COORDINATE FILE FOUND RESULTING IN THOSE REPLACED MONUMENTS SET ON SURVEY 11-039-B BEING 0.20' - 0.30' IN THE WRONG LOCATION WHICH IS ALSO NOTED ON COUNTY SURVEY 16-101-B BY ROBERT BUTLER WITH THE OREGON DEPARTMENT OF TRANSPORTATION ON SHEET 9 IN THE RECOVERED MONUMENT TABLE. IN ORDER TO RE-ESTABLISH THE TRUE LOCATION OF THESE CENTER LINE MONUMENTS, THE RELATIONSHIP BASED UPON THE COORDINATES WITH COMMON MONUMENTS SHOWN ON SAID ODOT DRAWING 11B-2-8 IN THE BASIS OF BEARING INSERT AT POINT "PENDLETON 1963" SHOWN ON THIS SURVEY AS "PEND" AND THE BRASS BOLT IN MONUMENT BOX AT THE INTERSECTION OF SW. 11TH. AND SW. ISSAC ST. SHOWN ON THIS SURVEY AS POINT 1074 WERE HELD WITH POINT "PEND" BEING THE POINT OF ROTATION.

THE RESOLVED RIGHT OF WAY CENTER LINE OF SW COURT AVENUE WAS ESTABLISHED BY RECREATING THE RECORD SHAPE OF THE CENTER LINE SHOWN ON OREGON DEPARTMENT OF TRANSPORTATION DRAWING 11B-2-8 AND POSITIONED BY HOLDING THE CALCULATED POSITIONS OF POINTS 1003, 1004, AND 1005 AS DESCRIBED ABOVE.

ANOTHER DISCREPANCY THAT WAS FOUND WAS AT THE NORTHWEST CORNER OF SW FIRST STREET AND COURT AVENUE WHERE ODOT DRAWING 11B-2-8 SHOWS THE ACQUISITION OF A PERMANENT EASEMENT FOR HIGHWAY RIGHT OF WAY PURPOSES PER DOCUMENT 2009-5500540 (FILE #26). THE RIGHT OF WAY LINES FOR SW FIRST STREET NORTHERLY OF COURT STREET ON SAID ODOT DRAWING 11B-2-8 WERE ERRONEOUSLY PLACED APPROXIMATELY 5' NORTHEASTERLY AND THEREFORE THAT EASEMENT ACQUISITION FALLS ENTIRELY WITHIN EXISTING RIGHT OF WAY.

RECOVERED MONUMENT LIST

PT ID	NORTHING	EASTING	STATION	OFFSET	DATE	DESCRIPTION & REFERENCE DOCUMENTS
1049	153560.08	292986.61	"D"33+15.31	0.06' RT	1/18/2017	FD 2-1/2" BRASS DISK MARKED "CITY OF PENDLETON", 11-039-B (NOT HELD)
1050	153985.34	293946.72	"D"43+65.38	0.13' LT	1/24/2017	FD MAG NAIL, 11-039-B (NOT HELD)
1053	153935.22	292820.61	"C"1293+85.24	0.02' LT	3/15/2017	FD 2-1/2" BRASS DISK MARKED "CITY OF PENDLETON", 11-039-B (NOT HELD)
1600	153849.44	293743.59	"D"41+24.62	41.88' RT	1/12/2022	FD 1-1/8" COPPER DISK MARKED "ODOT", FLUSH, 16-101-B
1601	153863.27	293745.59	"D"41+32.05	30.04' RT	1/12/2022	FD 1-1/8" COPPER DISK MARKED "ODOT", FLUSH, 16-101-B
1602	154286.45	293551.48	"C"1301+95.74	25.38' LT	1/12/2022	FD 1-1/8" COPPER DISK MARKED "ODOT", FLUSH, NO RECORD FOUND
1603	154270.87	293498.45	"C"1301+40.94	32.63' LT	1/12/2022	FD 1-1/8" COPPER DISK MARKED "ODOT", FLUSH, 16-101-B
1604	153895.25	293666.83	"D"40+72.99	31.09' LT	1/12/2022	FD 1-1/8" COPPER DISK MARKED "ODOT", FLUSH, NO RECORD FOUND
1605	153832.27	293675.20	"D"40+55.13	29.89' RT	1/12/2022	FD 1-1/8" COPPER DISK MARKED "ODOT", FLUSH, 16-101-B
1606	153829.57	293686.85	"D"40+64.69	37.07' RT	4/4/2022	FD 1-1/8" COPPER DISK MARKED "ODOT", FLUSH, 16-101-B
1607	154190.56	293592.69	"C"1301+94.56	78.98' RT	4/4/2022	FD SCREW WITH 3/4" BRASS WASHER MARKED "PLS 1106", FLUSH, PLAT BK. 15, PG. 55
1608	154236.68	293573.41	"C"1301+95.61	29.01' RT	4/4/2022	FD SCREW WITH 3/4" BRASS WASHER MARKED "PLS 1106", FLUSH, PLAT BK. 15, PG. 55
1609	154277.13	293664.86	"C"1302+95.61	29.09' RT	4/4/2022	FD MAG NAIL, FLUSH, PLAT BK. 15, PG. 55
1610	154360.29	293780.79	"C"1304+35.29	0.04' RT	4/4/2022	FD MAG NAIL, FLUSH, 11-039-B (NOT HELD)
1611	154145.69	293296.14	"C"1299+05.26	0.16' LT	4/4/2022	FD 2-1/2" BRASS DISK MARKED "CITY OF PENDLETON", 11-039-B (NOT HELD)
1612	154170.91	293427.46	"C"1300+35.54	30.00' RT	4/4/2022	FD TACK IN LEAD PLUG WITH 3/4" BRASS WASHER "PLS 1106", FLUSH, 99-321-C



LEGEND

- ( ) RECORD DATA PER REFERENCE LIST ON SHEET 1
- ★ SET GPS CONTROL
- FOUND MONUMENT
- CALCULATED POINT
- REFERENCE LINE

CONTROL NETWORK SCHEMATIC  
NOT TO SCALE

NETWORK POINT COORDINATE TABLE

PT ID	NORTHING	EASTING	ELEVATION	DATE	DESCRIPTION
1	153713.467	293797.030	1069.82	1/12/2022	SET 1-1/8" COPPER DISK MARKED "ODOT"
2	153914.373	293839.711	1070.64	1/12/2022	SET 1-1/8" COPPER DISK MARKED "ODOT"
3	154097.477	293630.740	1069.41	1/12/2022	SET 1-1/8" COPPER DISK MARKED "ODOT"
4	154311.097	293613.130	1070.24	1/12/2022	SET 1-1/8" COPPER DISK MARKED "ODOT"
5	154457.150	293467.549	1069.01	1/12/2022	SET 1-1/8" COPPER DISK MARKED "ODOT"
6	154196.940	293345.650	1068.04	1/12/2022	SET 1-1/8" COPPER DISK MARKED "ODOT"
7	153836.567	293548.862	1067.13	1/12/2022	SET 1-1/8" COPPER DISK MARKED "ODOT"
PEND	152329.463	296353.791	N/A	1/12/2017	FD BRASS DISK IN CONC. "PENDLETON 1963"
1074	150948.872	292151.751	N/A	4/3/2017	FD 1" BRASS BOLT IN MON. BOX.
2003	149663.582	288771.104	N/A	12/17/2017	FD 2 1/2" BRASS DISK. SEE CS 18-084-B

REFERENCES

- TOWN PLAT OF PENDLETON, DB. B, PG. 2, DEC. 18, 1868
- H-215-B, DATED DEC. 27, 1972
- CS 84-035-B, FILED APR. 5, 1984
- CS 86-032-B, FILED APR. 8, 1986
- CS 99-321-C, DATED JAN. 17, 1999
- CS 01-151-C, FILED SEPT. 2001
- CS 02-009-B, FILED JAN. 2002
- ODOT DRG. 10B-16-6, DATED DEC. 2002
- PARTITION PLAT 2005-13, FILED JUNE 1, 2005
- PARTITION PLAT 2005-28, FILED OCT. 17, 2005
- ODOT DRG. 11B-2-8, DATED JULY 2008
- MILARKY-MURPHY CONDOMINIUM, PLAT BK 15, PG. 55
- CS 11-039-B, FILED APR. 2011
- CS 16-101-B, FILED NOV. 7, 2016
- CS 17-070-B, FILED JUNE 7, 2017
- WALT SULLIVAN UNRECORDED SURVEY, 1993

REGISTERED PROFESSIONAL LAND SURVEYOR  
  
 OREGON  
 JANUARY 14, 2003  
 BRET N. ELITHORP  
 63148  
 EXPIRES: 12-31-2023

OREGON DEPARTMENT OF TRANSPORTATION  
 HORIZONTAL CONTROL, RECOVERY AND RETRACEMENT SURVEY  
 PENDLETON SIGNAL UPGRADE PROJECT, PHASE 2  
 PENDLETON HIGHWAY (US30)  
 UMATILLA COUNTY

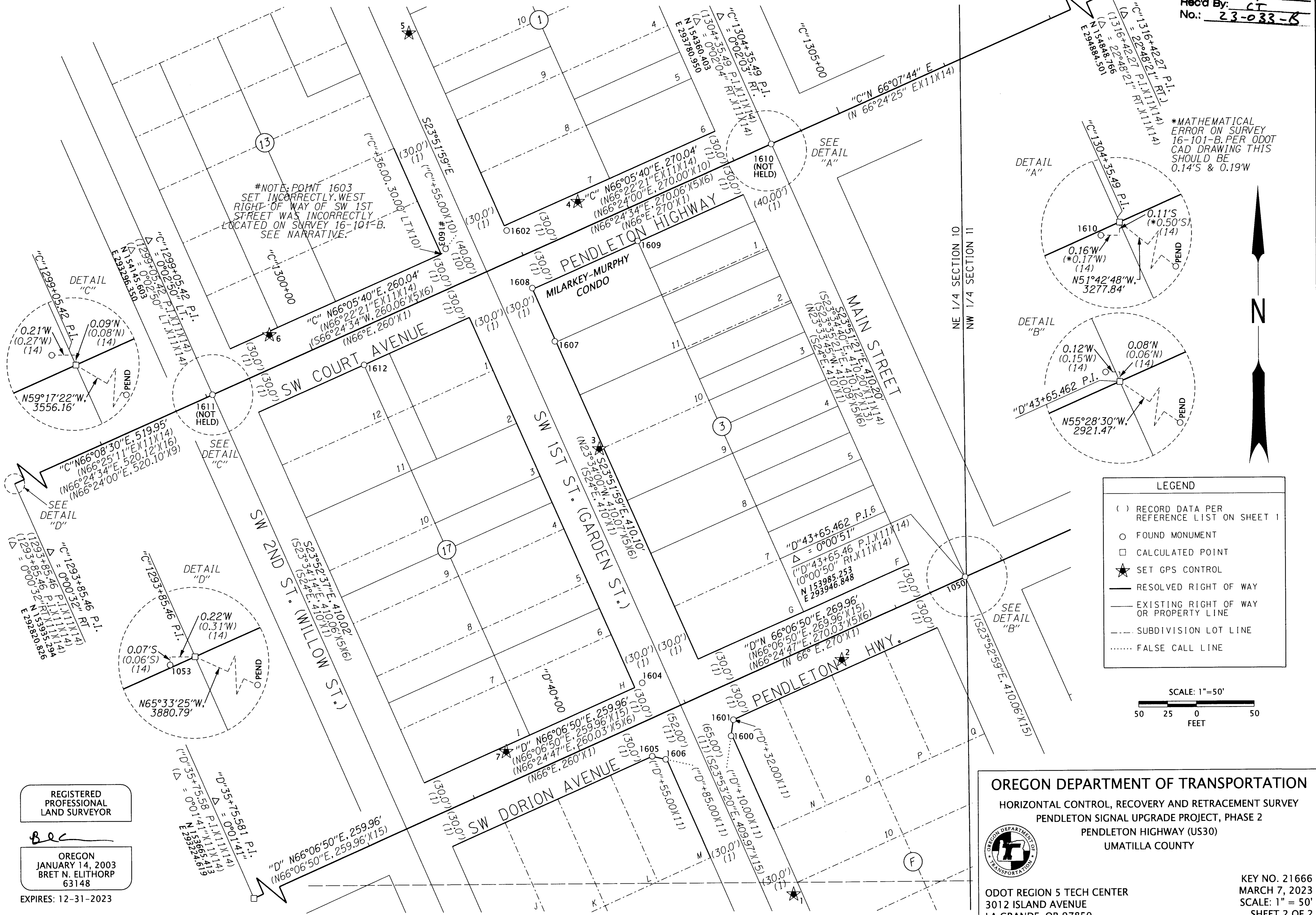
ODOT REGION 5 TECH CENTER  
 3012 ISLAND AVENUE  
 LA GRANDE, OR 97850

KEY NO. 21666  
 MARCH 7, 2023  
 NO SCALE  
 SHEET 1 OF 2

NE 1/4 SECTION 10 T2N R32E WM NW 1/4 SECTION 11 T2N R32E WM

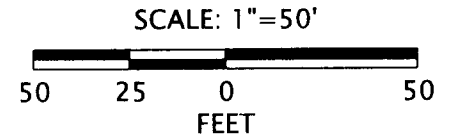
RECEIVED BY  
 Umatilla County Surveyor  
 Date: 4/10/23  
 Rec'd By: CT  
 No.: 23-033-B

\*MATHEMATICAL ERROR ON SURVEY 16-101-B. PER ODOT CAD DRAWING THIS SHOULD BE 0.14'S & 0.19'W



**LEGEND**

- ( ) RECORD DATA PER REFERENCE LIST ON SHEET 1
- FOUND MONUMENT
- CALCULATED POINT
- ★ SET GPS CONTROL
- RESOLVED RIGHT OF WAY
- EXISTING RIGHT OF WAY OR PROPERTY LINE
- - - SUBDIVISION LOT LINE
- ..... FALSE CALL LINE



REGISTERED PROFESSIONAL LAND SURVEYOR  
  
 OREGON  
 JANUARY 14, 2003  
 BRET N. ELITHORP  
 63148  
 EXPIRES: 12-31-2023

**OREGON DEPARTMENT OF TRANSPORTATION**  
 HORIZONTAL CONTROL, RECOVERY AND RETRACEMENT SURVEY  
 PENDLETON SIGNAL UPGRADE PROJECT, PHASE 2  
 PENDLETON HIGHWAY (US30)  
 UMATILLA COUNTY

ODOT REGION 5 TECH CENTER  
 3012 ISLAND AVENUE  
 LA GRANDE, OR 97850

KEY NO. 21666  
 MARCH 7, 2023  
 SCALE: 1" = 50'  
 SHEET 2 OF 2