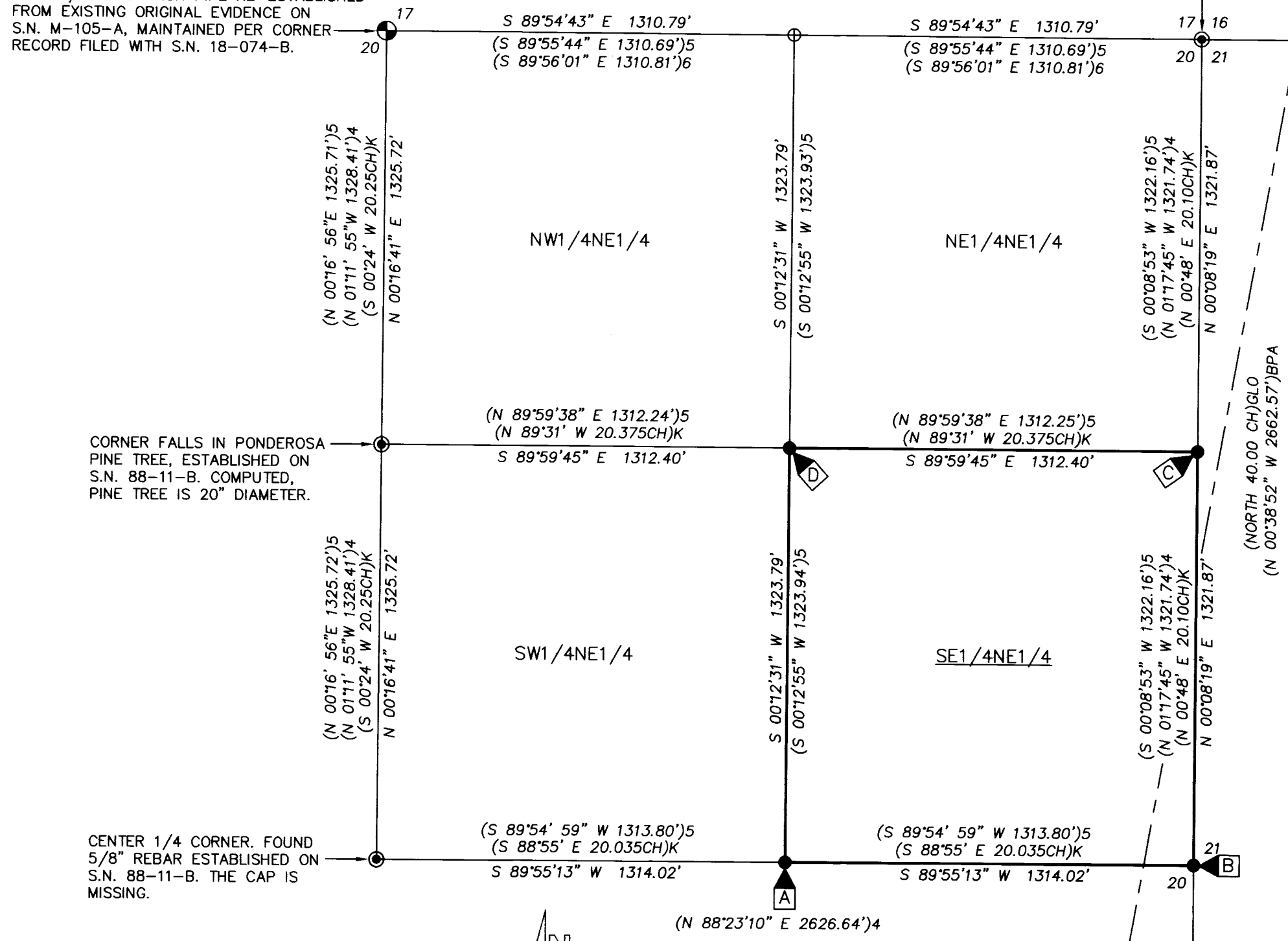


RECORD OF SURVEY

1/4 CORNER, FOUND 2 1/2" BRASS CAP ON 2 1/2" GALV IRON PIPE RE-ESTABLISHED FROM EXISTING ORIGINAL EVIDENCE ON S.N. M-105-A, MAINTAINED PER CORNER RECORD FILED WITH S.N. 18-074-B.

SECTION CORNER. FOUND 5/8" REBAR SET IN CONCRETE ON S.N. R-160-B. THE CAP IS MISSING.

APPROXIMATE CENTERLINE OF BPA PENDLETON-LA GRANDE TRANSMISSION LINE 100 FOOT WIDE EASEMENT. NO OTHER EASEMENTS OR ENCUMBRANCES ARE SHOWN OR NOTED ON THIS SURVEY.



CORNER FALLS IN PONDEROSA PINE TREE, ESTABLISHED ON S.N. 88-11-B. COMPUTED, PINE TREE IS 20" DIAMETER.

(N 0016° 56' E 1325.71')5
(N 0111° 55' W 1328.41')4
(S 0024° W 20.25CH)K
N 0076° 41' E 1325.72'

(N 89° 59' 38" E 1312.24')5
(N 89° 31' W 20.375CH)K
S 89° 59' 45" E 1312.40'

(N 89° 59' 38" E 1312.25')5
(N 89° 31' W 20.375CH)K
S 89° 59' 45" E 1312.40'

(S 0008° 53' W 1322.16')5
(N 0117° 45' W 1321.74')4
(N 0048° E 20.10CH)K
N 0008° 19' E 1321.87'

(N 0016° 56' E 1325.72')5
(N 0111° 55' W 1328.41')4
(S 0024° W 20.25CH)K
N 0076° 41' E 1325.72'

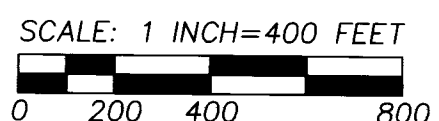
(S 89° 54' 59" W 1313.80')5
(S 88° 55' E 20.035CH)K
S 89° 55' 13" W 1314.02'

(S 89° 54' 59" W 1313.80')5
(S 88° 55' E 20.035CH)K
S 89° 55' 13" W 1314.02'

(S 0008° 53' W 1322.16')5
(N 0117° 45' W 1321.74')4
(N 0048° E 20.10CH)K
N 0008° 19' E 1321.87'

(N 88° 23' 10" E 2626.64')4

APPROXIMATE CENTERLINE OF BPA PENDLETON-LA GRANDE TRANSMISSION LINE 100 FOOT WIDE EASEMENT. NO OTHER EASEMENTS OR ENCUMBRANCES ARE SHOWN OR NOTED ON THIS SURVEY.



"BASIS OF BEARINGS": MEASURED BEARINGS ARE ROTATED TO TRUE NORTH BASED ON GPS GEODETIC OBSERVATION TAKEN AT THE CENTER 1/4 CORNER OF SECTION 20. MEASURED DISTANCES SHOWN ARE GROUND DISTANCES. CONVERTED FROM STATE PLANE GRID DISTANCES USING A COMBINED SCALE AND ELEVATION FACTOR OF 1.00026220073.

(S 0008° 53' W 2644.32')5
(N 0117° 45' W 2643.49')4
(N 0037° 31' W 2620.26)BPA
(NORTH 40.00 CH)GLO
N 0008° 19' E 2643.73'

SET MONUMENT NOTES:

- ▲ A SET A 5/8 BY 30 INCH REBAR WITH RED PLASTIC CAP. CORNER MONUMENT FALLS WEST, 0.8 FOOT FROM FOUND "OREGON STATE PARKS" WHITE MARKER PADDLE.
- ▲ B RE-ESTABLISHED 1/4 SECTION CORNER BY SINGLE PROPORTION MEASUREMENT AND SET 5/8 BY 24 INCH POINTED REBAR WITH 2 INCH ALUMINUM CAP IN DRILLED HOLE IN ROCKY RIDGETOP AND SURROUNDED WITH A MOUND OF STONE. CORNER RECORD IS FILED CONCURRENTLY WITH THIS SURVEY.
- ▲ C SET A 5/8 BY 30 INCH REBAR WITH RED PLASTIC CAP. CORNER MONUMENT FALLS S 10° E, 3.5 FEET FROM FOUND "OREGON STATE PARKS" WHITE MARKER PADDLE AND 15 1/2 FEET NORTH OF CROOKED EAST-WEST FENCE LINE.
- ▲ D SET A 5/8 BY 16 INCH REBAR WITH RED PLASTIC CAP, DRILLED INTO SOLID ROCK. CORNER MONUMENT FALLS IN A GATE, 2 FEET SOUTH OF FENCE EXTENDING EAST AND 3 FEET NORTH OF FENCE EXTENDING WEST. THE MONUMENT IS 16 FEET WEST OF THE 18 INCH PONDEROSA PINE GATE END TO THE EAST AND 15 FEET EAST FROM THE ROCK CRIB GATE END TO THE WEST. THE MONUMENT IS 1 INCH ABOVE GROUND LINE.

LEGEND

- - FOUND 2 1/2 OR 2 1/4" BRASS CAP MONUMENT AS NOTED.
- - SET 5/8" REBAR WITH 1 1/4" RED PLASTIC CAP UNLESS OTHERWISE NOTED. LENGTH OF REBARS SET IS NOTED IN SET MONUMENT NOTES.
- - FOUND 5/8" REBAR MONUMENT AS NOTED FROM S.N. 88-11-B.
- ⊕ - COMPUTED POINT ONLY, NOT SET OR FOUND.
- S.N. - INDICATES SURVEY NUMBER OF RECORD SURVEY RECORDED IN THE UMATILLA COUNTY SURVEYOR'S OFFICE.
- (XOX)GLO - RECORD DIMENSION BY CURRIN AND NOLAN UNDER SPECIAL CONTRACT DATED MAY 4, 1887.
- (XOX)K - RECORD DIMENSION BY JOHN KIMBRELL, COUNTY SURVEYOR, UNDER SURVEY NO. 320, DATED JUNE 8, 1910.
- (XOX)BPA - COMPUTED DIMENSIONS FROM COORDINATES SHOWN ON BPA TRANSMISSION LINE RIGHT-OF-WAY MAP NO. C101-340-D1, DATED MAY 27, 1941. NOTE: BPA MAY NOT HAVE RECOVERED THE ACTUAL NE CORNER OF SECTION 20. THEY NOTE TYING A 4 BY 4 INCH STATE HIGHWAY POST IN 1941.
- (XOX)4 - RECORD DIMENSION FROM SURVEY NO. M-105-A.
- (XOX)5 - RECORD DIMENSION FROM SURVEY NO. 88-11-B.
- (XOX)6 - RECORD DIMENSION FROM SURVEY NO. 18-074-B.

SURVEYOR'S NARRATIVE:

THIS SURVEY WAS MADE AT THE REQUEST OF THE OWNERS TO RECOVER OR MONUMENT THE FOUR CORNERS OF THE REMONUMENT THE FOUR CORNERS OF THE SE1/4 OF THE NE1/4 OF SECTION 20, T1N., R35E., W.M. SECTION 20 WAS PARTLY SUBDIVIDED, BY IRREGULAR METHODS, BY JOHN KIMBRELL, COUNTY SURVEYOR, IN SURVEY NO. 320, IN JUNE, 1910. KIMBRELL'S SURVEY RECORD INDICATES HE RECOVERED THE EAST 1/4 CORNER OF SECTION 20 AND SET WOOD POSTS FOR THE OTHER THREE CORNERS OF THE SE1/4 OF THE NE1/4. I FIND NO ACCEPTABLE EVIDENCE OF THE KIMBRELL SURVEY. THE 1941 BPA SURVEY OF THE PENDLETON-LA GRANDE TRANSMISSION LINE INDICATES A STONE MOUND WAS FOUND FOR THE EAST 1/4 CORNER OF SECTION 20, BUT AFTER A THOROUGH SEARCH, I FIND NO EVIDENCE OF THE BPA MOUND. SECTION 20 WAS SUBDIVIDED BY JOHN HOLLINGSWORTH OF THE OREGON STATE PARKS DIVISION IN 1988 UNDER SURVEY NO. 88-11-B. HOLLINGSWORTH SET SEVERAL MONUMENTS ALONG THE PARK BOUNDARY INCLUDING THE CENTER 1/4 CORNER OF SECTION 20. HOLLINGSWORTH COMPUTED THE EAST 1/4 CORNER OF SECTION 20 AT THE MID-POINT BETWEEN THE SOUTHEAST AND NORTHEAST CORNERS OF SECTION 20.

TO MAKE THE PRESENT SURVEY, I FOLLOWED SURVEY NO 88-11-B, MAKING MY OWN TIES TO THE CONTROLLING CORNERS NEEDED TO SUBDIVIDE THE NORTHEAST QUARTER OF SECTION 20. MY MEASUREMENTS AND COMPUTATIONS MATCH SURVEY NO. 88-11-B WITHIN ACCEPTABLE LIMITS. SEE THE CORNER RECORD RECORDED WITH THIS SURVEY FOR INFORMATION ON THE REESTABLISHED EAST 1/4 CORNER OF SECTION 20.

THE LINES OF THE SE1/4 OF THE NE1/4 WERE NOT POSTED ON MY SURVEY. THE NORTH LINE IS APPROXIMATELY INDICATED BY A CROOKED EAST-WEST FENCE LINE AND THE WEST LINE IS APPROXIMATELY INDICATED BY OREGON STATE PARKS BOUNDARY SIGNS NAILED TO TREES.

THIS SURVEY WAS MADE USING A LEICA GEODETIC GPS RECEIVER CONNECTED TO THE OREGON REAL TIME NETWORK. MEASUREMENTS WERE GATHERED ON THE OREGON STATE PLANE COORDINATE SYSTEM AND ROTATED AND SCALED FROM GRID VALUES TO TRUE BEARINGS AND GROUND DISTANCES USING THE ROTATION AND COMBINED SCALE AND ELEVATION FACTOR NOTED ON THE "BASIS OF BEARINGS" STATEMENT ON THIS MAP. CONTROL CORNER TIES AND CORNER MONUMENTS SET WERE VERIFIED BY REDUNDANT OBSERVATIONS. IN AREAS WHERE GPS SIGNAL WAS OBSCURED BY TREES, I USED A TRIMBLE S-6 ROBOT TO MAKE TIES AND SET CORNERS FROM NEARBY GPS CONTROL POINTS.

REFERENCE INFORMATION:

- ORIGINAL GLO SURVEY BY CURRIN AND NOLAN UNDER SPECIAL INSTRUCTIONS DATED MAY 4, 1887.
- RECORD OF SURVEY NO. 320, BY JOHN KIMBRELL, COUNTY SURVEYOR, DATED JUNE 8, 1910.
- MAP OF RIGHT-OF-WAY SURVEY BY BPA OF PENDLETON-LA GRANDE TRANSMISSION LINE, DRAWING C101-340-D1, DATED MAY 27, 1941.
- MAP OF SURVEY NO. M-105-A, BY DAVE KRUMBEIN, DATED NOV. 17, 1976.
- MAP OF SURVEY NO. R-160-B, BY JOHN HOLLINGSWORTH, DATED AUG. 1, 1980.
- MAP OF SURVEY NO. 88-11-B, BY JOHN HOLLINGSWORTH, DATED JAN. 5, 1988.
- CORNER RECORD OF REMONUMENTATION OF SE COR. OF SECTION 20, SURVEY SURVEY NO. 08-043-B, BY STEPHEN HADDOCK, RECORDED FEB., 2008.
- MAP OF SURVEY NO. 18-074-B, BY JEFFREY HSU, DATED JULY 2018.

LEGAL DESCRIPTION TAKEN FROM "AFFIDAVIT OF DESCENDANTS", RECORDED AS INST. NO. 2020-7020556, UMATILLA COUNTY OFFICE OF RECORDS.

SECTION CORNER. FOUND 2 1/4" BRASS CAP ON 1 1/2" GALV. IRON PIPE, REMONUMENTED FROM ORIGINAL STONE AND BEARING TREE EVIDENCE ON S.N. 08-043-B.

RECEIVED BY
Umatilla County Surveyor
Date: 11/30/21
Rec'd By: CT
No.: 21-121-B

REGISTERED PROFESSIONAL LAND SURVEYOR
William R. Wells
OREGON
JULY 22, 1977
WILLIAM R. WELLS
1106
RENEWS 6/30/22

WELLS SURVEYING
200 SE HAILEY SUITE 108
P.O. BOX 1696
PENDLETON, OR 97801
PHONE: (541) 276-6362

DATE: 10/21	DR. BY: WRW
CK. BY: WRW	NO: 21-1778

PROJECT: \LHMROT

SURVEY FOR:
ROBIN M. SKILLMAN
JESS W. McCOY &
LORI I. McCOY-HARRISON

OF THE CORNERS OF THE SE1/4NE1/4, SECTION 20, T1N., R35E., W.M. UMATILLA COUNTY, OREGON.