

PROPERTY LINE ADJUSTMENT

NW1/4 SW1/4, SECTION 21,
TOWNSHIP 2 N., RANGE 32 E, W.M.

CITY OF PENDLETON
UMATILLA COUNTY, OREGON

NARRATIVE

THIS PROPERTY LINE ADJUSTMENT WAS PERFORMED AT THE REQUEST OF TRAMPAS MCCRAE TO ADJUST THE COMMON LINE BETWEEN THE TRACTS WHICH ARE UMATILLA COUNTY DEEDS 2020-7000481 AND 2020-6960774.

THE TWO MENTIONED TRACTS LIE WITHIN THE BOUNDARIES OF A 14.17 ACRE TRACT SURVEYED BY CS S-94-AX; BY TORONTO, 1981. THE WEST LINE OF SAID SURVEY WAS CITED AS BEING THE WEST LINE OF SECTION 21. TORONTO SUBSEQUENTLY DIVIDED THE 14.17 ACRE TRACT INTO FOUR SEPARATE TRACTS, BEING THE DEEDS ABOVE NOTED TOGETHER WITH DEEDS REEL 305 PAGE 0205 AND 2020-6970162.

UPON THE SAID SURVEY, NORTH-SOUTH DISCREPANCIES OF +/- 2 FEET WERE DISCOVERED ALONG BOTH THE WEST AND EAST-SOUTHEAST LINES WHEN COMPARED WITH THE CUMULATIVE DISTANCES OF THE FOUR (4) CITED DEEDS. THE LOCATIONS OF THE RECOVERED MONUMENTS OF CS S-94-AX CONFER WELL WITH THE CUMULATIVE DEED DISTANCES, AS OPPOSED TO DISTANCES OF SAID SURVEY.

THE WEST CORNERS OF THE FOUR (4) TRACTS WERE PROPORTIONED USING THE DEED DISTANCES. THE RECORD BEARINGS OF THE INTERVENING LINES BETWEEN THE FOUR (4) TRACTS ARE CITED AS BEING EAST / WEST; AND WERE THE DIRECTIONS HERE HELD FOR THE LINES BETWEEN THE FOUR (4) TRACTS.

THE ADJUSTED LINE LIES 5.0 FEET SOUTH OF THE CENTER OF AN ELECTRICAL TRANSFORMER, AS DIRECTED BY MR. MCCRAE.

THIS WORK WAS ACCOMPLISHED USING TRIMBLE R-8 G.P.S. RECEIVERS, A TRIMBLE TSC-2 DATA CONTROLLER AND A NIKON DTM-522 THEODOLITE WITH ELECTRONIC DISTANCE MEASURING CAPABILITY.

REFERENCES:

COUNTY SURVEYS:

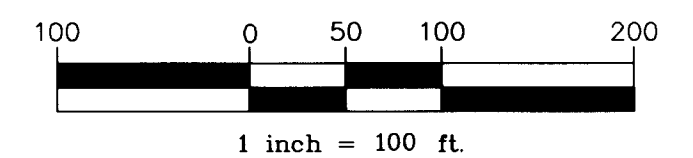
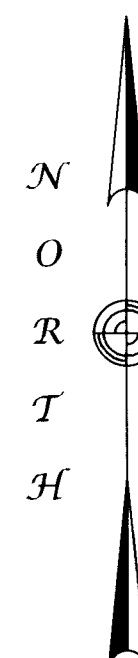
- S-94-AX (1981, TORONTO)
- 93-054-C
- 99-078-B

CORNER REMONUMENTATION RECORDS:

- P9-93-054-C (WEST 1/4, SEC. 21)
- R9-93-054-C (S.W. CORNER, SEC. 21)

UMATILLA COUNTY DEEDS:

- 2020-7000481
- 2020-6960774
- REEL 305 PAGE 0205
- 2020-6970162



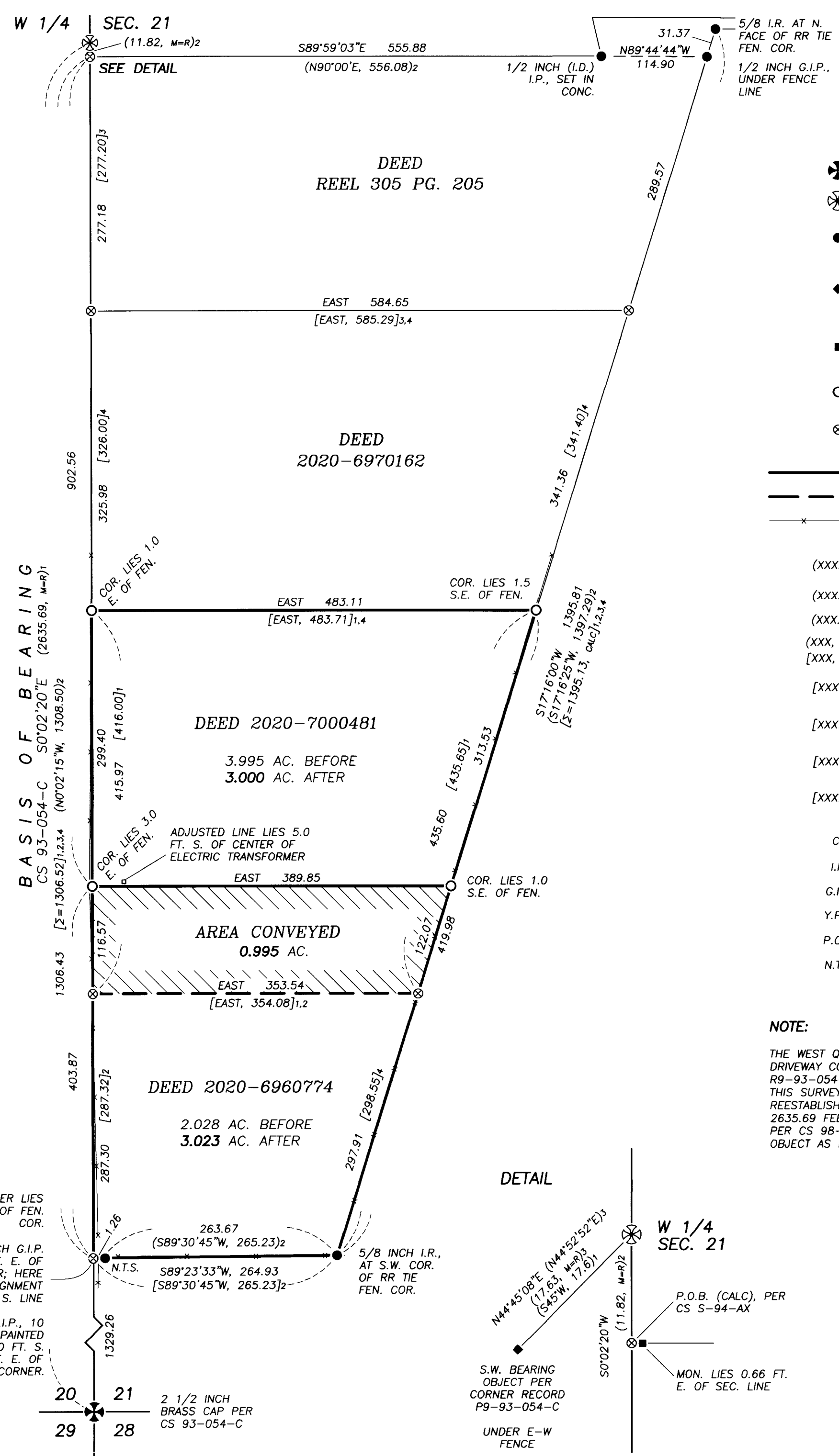
LEGEND

- PUBLIC LAND SURVEY CORNER, AS NOTED
- PUBLIC LAND SURVEY CORNER, CALCULATED POSITION. SEE NOTE BELOW
- FOUND MONUMENT PER CS S-94-AX, AS NOTED
- FOUND, 5/8 INCH IRON REBAR WITH Y.P.C. MKD: "WR WELLS, PLS 1106;" PER CS 93-054-C AND THE CORRESPONDING CORNER RECORD
- FOUND, 5/8 INCH IRON REBAR (ORIGIN UNKNOWN) WITH Y.P.C. MARKINGS ARE FADED AND ILLEGIBLE
- SET 5/8 X 30 INCH IRON REBAR WITH LIGHT BLUE PLASTIC CAP MKD: "WALLOWA ASSOC."
- CALCULATED POSITION, MONUMENT NEITHER FOUND NOR SET
- PROPERTY LINES, AFTER ADJUSTMENT
- PROPERTY LINE BEING ADJUSTED
- BARBED WIRE FENCES

- (XXX.XX)₁ RECORD DIMENSION PER CS 93-054-C OR CORNER RECORD P9-93-054-C
- (XXX.XX)₂ RECORD DIMENSION PER CS S-94-AX
- (XXX.XX)₃ RECORD DIMENSION PER CS 99-078-B
- (XXX, M=R)_x MEASURED DISTANCE EQUALS RECORD DISTANCE, PER REFERENCE NOTED
- [XXX, M=R]_x MEASURED DISTANCE EQUALS RECORD DISTANCE, PER REFERENCE NOTED
- [XXX.XX]₁ RECORD DIMENSION PER UMATILLA COUNTY DEED 2020-7000481
- [XXX.XX]₂ RECORD DIMENSION PER UMATILLA COUNTY DEED 2020-6960774
- [XXX.XX]₃ RECORD DIMENSION PER UMATILLA COUNTY DEED REEL 305 PAGE 0205
- [XXX.XX]₄ RECORD DIMENSION PER UMATILLA COUNTY DEED 2020-6970162
- CS COUNTY SURVEY
- I.R. IRON ROD (REBAR)
- G.I.P. GALVANIZED IRON PIPE
- Y.P.C. YELLOW PLASTIC CAP
- P.O.B. POINT OF BEGINNING
- N.T.S. NOT TO SCALE

NOTE:

THE WEST QUARTER CORNER OF SECTION 21 WAS DESTROYED DURING DRIVEWAY CONSTRUCTION. PER CORNER MONUMENTATION RECORD R9-93-054-C, ONLY THE S.W. BEARING OBJECT WAS RECOVERED BY THIS SURVEY. THE CALCULATED POSITION, HERE SHOWN, WAS REESTABLISHED BY A DISTANCE-DISTANCE INTERSECTION BEING 2635.69 FEET NORTHERLY FROM THE S.W. CORNER OF SECTION 21 PER CS 98-054-C; AND 17.63 FEET FROM SAID S.W. BEARING OBJECT AS REPORTED PER CS 99-78-B.



RECEIVED BY
Umatilla County Surveyor
Date: 8/5/21
Rec'd By: CT
No.: 21-087-B

REGISTERED
PROFESSIONAL
LAND SURVEYOR

Rodney J. Lewis

OREGON
JULY 14, 1998
RODNEY J. LEWIS
2872
EXPIRES 12-31-22

PROPERTY LINE ADJUSTMENT		
FOR TRAMPAS MCCRAE		
LOCATED WITHIN NW1/4 SW1/4, SECTION 21 TOWNSHIP 2 NORTH, RANGE 32 EAST, W.M. UMATILLA COUNTY, OREGON		
Wallowa Associates 303 S.E. Alamo Street Enterprise, Oregon 97828 (541) 426-9049		
SCALE 1 INCH = 100 FT.	SHEET No. 1 OF 1	DATE OF SURVEY Beginning: 16 JUN 21 Ending: 3 AUG 21
DRAWN BY R J L	CHECKED K L P	PROJECT No. F211-01 / 3142tm

TRUE CORNER LIES 5.6 FT. W. OF FEN. COR.

A 1/2 INCH G.I.P. LIES 1.26 FT. E. OF TRUE CORNER; HERE HELD FOR ALIGNMENT OF S. LINE

A 2 INCH G.I.P., 10 INCHES HIGH, PAINTED RED; LIES 2.0 FT. S. AND 2.0 FT. E. OF TRUE CORNER.

2 1/2 INCH BRASS CAP PER CS 93-054-C