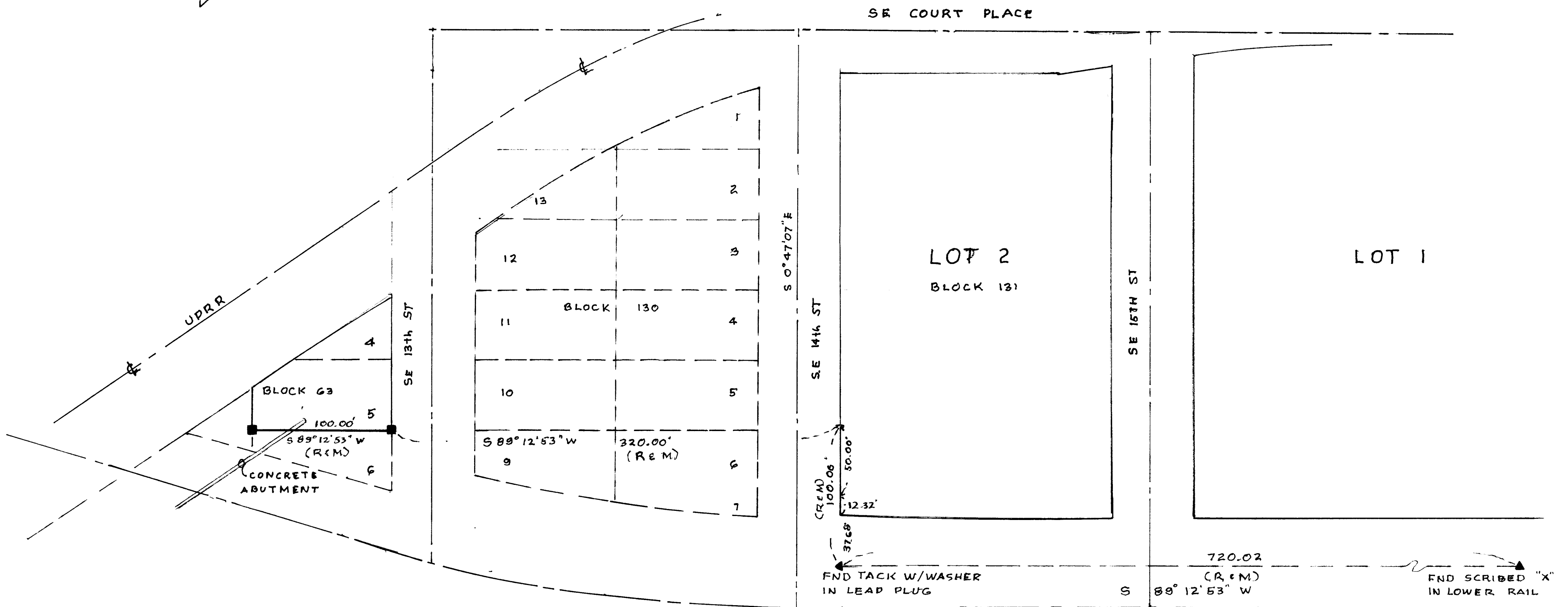


NARRATIVE

PURPOSE OF THIS SURVEY WAS TO ESTABLISH THE SOUTH LINE OF LOT 5, BLOCK G3, RESERVE, NOW RESERVATION ADDITION TO THE CITY OF PENDLETON, OR.
 THE SURVEY, C.S. 18-067-B, ST. ANTHONY'S REPLAT HAS MONUMENTATION FOR THE SOUTH LINES OF BLOCKS 131, 139 & 140 REFERENCED TO C.S. 96-139-C USING THOSE POINTS AND TURNING THE ANGLES AND GOING THE PLAT DISTANCES TO ESTABLISH THE SOUTH LINE OF LOT 5.
 BEARINGS ARE BASED ON SE COURT AVE. BEARING S 89° 12' 53" W AS SHOWN ON CS 18-067-B
 SURVEY DONE WITH LEICA T1000



- INDICATES SET 5/8" x 24" IRON REBAR W/ ALUMINUM CAP STAMPED PLS 933
- INDICATES MONUMENT SET BY C.S. 96-139-C
- ▲ SHOWN ON "ST. ANTHONY REPLAT"

RECEIVED BY
 Umatilla County Surveyor
 Date: 6/19/2020
 Rec'd By: WHL
 No: 20-055-C

SURVEY SOUTH LINE
 LOT 5, BLOCK G3,
 RESERVATION ADDITION
 PENDLETON, OR

MARIER
 NW 1/4, NE 1/4, SEC. 11, T. 21 N., R. 32 E.

1"=50' DHK 2008 C
 6-2-20 2024

REGISTERED PROFESSIONAL LAND SURVEYOR

David H. Krumbain

OREGON
 JULY 17, 1970
 DAVID H. KRUMBAIN
 933