

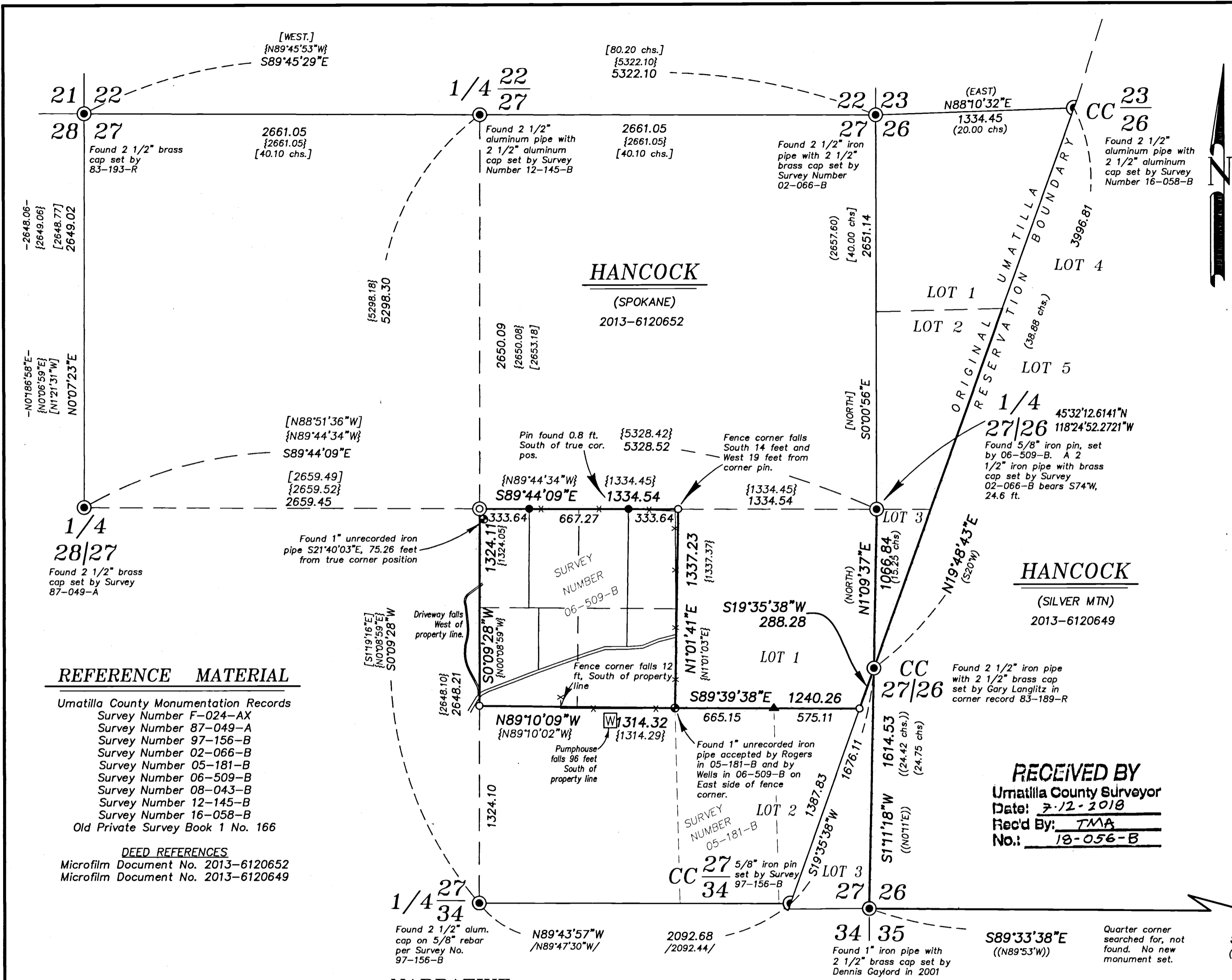
BASIS OF BEARING

True Geodetic North at the quarter corner between Sections 26 and 27, Township 1 North, Range 35 East of the Willamette Meridian, as established by GPS observation

SCALE: 1" = 500'

LEGEND

- Found monument as noted, marked as per Umatilla County Monumentation Records
- Found 5/8" iron pin with plastic cap marked OR PLS 1106 WA PLS 17372 set by Survey Number 06-509-B
- Found unrecorded 1" iron pipe
- ▲ Found 5/8" iron pin with plastic cap marked WAGNER 02817LS, set by Survey Number 05-181-B
- ⊙ Set 2 1/2" aluminum pipe with 3" aluminum cap, marked as per Umatilla County Monumentation records, filed separately
- Set 5/8" iron pin with 2 1/2" aluminum cap marked as per Umatilla County Monumentation records, filed separately
- { } Record measurement as per Survey Number 06-509-B
- () Record measurement as per Survey Number 05-181-B
- / / Record measurement as per Survey Number 97-156-B
- [] Record measurement as per GLO Contract dated May 4, 1887, executed by Currin and Noland
- (()) Record measurement as per GLO Contract 635 dated April 19, 1895, executed by Marius Buchanan
- - Record measurement as per Survey Number 87-049-A
- x Fenceline
- ~ Road
- Line posted with steel fenceposts
- W Pump House



REFERENCE MATERIAL

Umatilla County Monumentation Records
 Survey Number F-024-AX
 Survey Number 87-049-A
 Survey Number 97-156-B
 Survey Number 02-066-B
 Survey Number 05-181-B
 Survey Number 06-509-B
 Survey Number 08-043-B
 Survey Number 12-145-B
 Survey Number 16-058-B
 Old Private Survey Book 1 No. 166

DEED REFERENCES
 Microfilm Document No. 2013-6120652
 Microfilm Document No. 2013-6120649

NARRATIVE

This survey was done at the request of Patrick Marolla, on behalf of Hancock Forest Management, land manager of the lands within. Mr. Marolla wanted to mark certain ownership lines prior to a timber sale. I recover the monuments as shown hereon. The iron pipe found at the SE 1/16 corner position has been accepted by Wells in Survey 06-509-B and Gary Wagner in Survey 05-181-B as a perpetuation of the monument set by Old Private Survey Book 1 Survey 166. I accept this monument as well. There are two monuments at the quarter corner common to Sections 26 and 27, one set by Survey 02-066-B by proportion and one set later by 06-509-B from a found original GLO bearing tree. I accept the monument set by 06-509-B, now a bare iron pin.

I place the Center 1/4, the Center-East 1/16th and Center-South 1/16th corners as per BLM Manual of Instructions 2009. A bent 1" galvanized iron pipe falls 75 feet Southeasterly from the Center 1/4 corner position. There does not appear to be any evidence of its use and I reject this monument. To establish the closing corner between Government Lots 1 and 2 of Section 27, I drive a line through the 5/8" iron pin set by Wagner in Survey 05-181-B. He establishes this point by a weighted mean bearing method, but uses the quarter corner monument set by Survey 02-066-B. Even though I use a different position for the quarter corner, I hold this found pin position for line, as the effect of recalculating a weighted mean bearing with the proper quarter corner would be minimal.

I find no other unusual conditions with this survey.

RECEIVED BY
 Umatilla County Surveyor
 Date: 7-12-2018
 Rec'd By: TMA
 No.: 18-056-B

REGISTERED
 PROFESSIONAL
 LAND SURVEYOR

 OREGON
 JUNE 2, 2010
 JEFFREY S. HSU
 83571
 Renewal Date: June 30, 2019

BAGETT, GRIFFITH & BLACKMAN
 2006 Adams Avenue, LaGrande, Oregon
 Map of Survey

Situated in Section 26 and 27, Township 1 North,
 Range 35 East of the Willamette Meridian

UMATILLA COUNTY, OREGON

SURVEYED FOR	Hancock Forest Management
SURVEYED BY	J. S. H.
Scale: 1" = 500'	Drawn by: J. S. H. June 2018