

TANKE ADDITION TO THE CITY OF MILTON-FREEWATER, OREGON

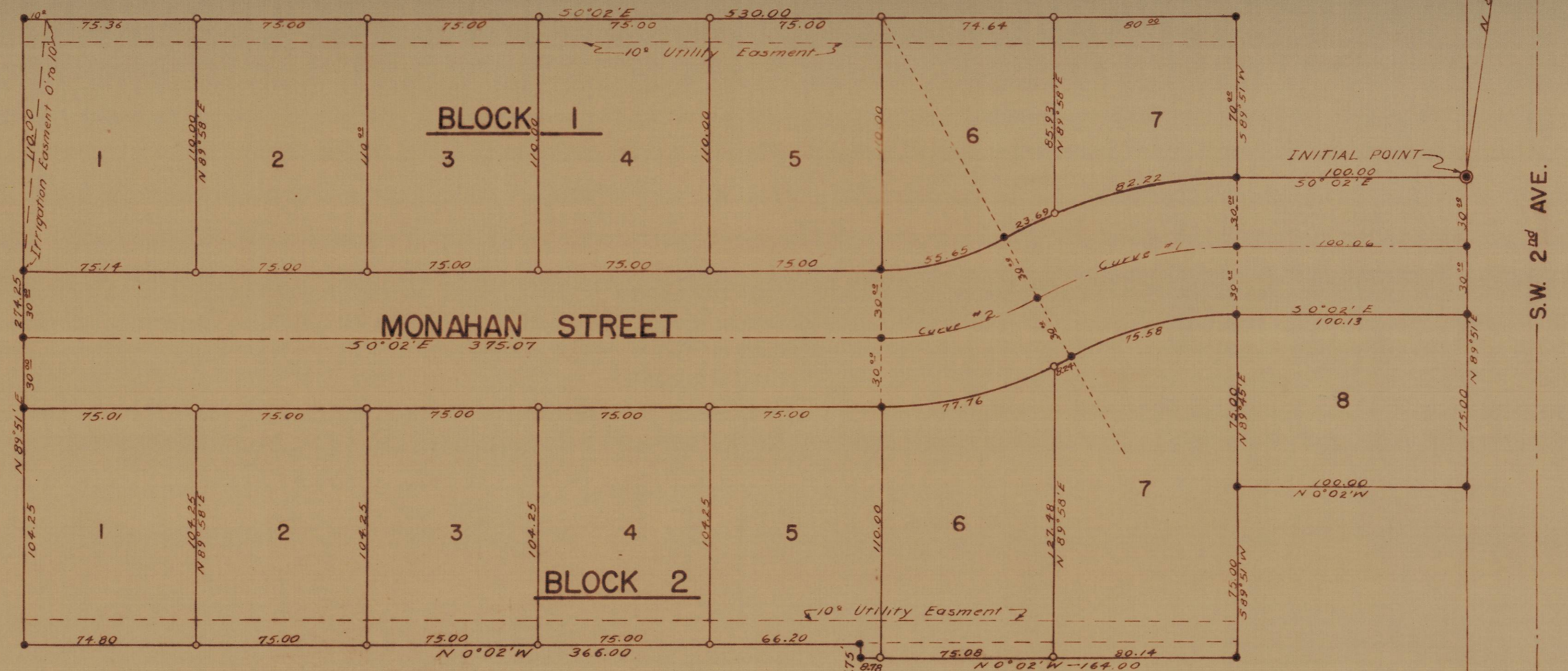
IN SECTION 12 TOWNSHIP 5 NORTH RANGE 35 E.W.M.

UMATILLA COUNTY, OREGON

SCALE 1" = 40'

MAY, 1956

Concrete Monument with iron pipe 11" x 2" in valve casing - Section Corner 12



Curve #2			Curve #1		
R=110.00	R=140.00	R=170.00	R=149.40	R=179.40	R=209.40
L=55.65	L=70.82	L=86.00	L=75.58	L=90.76	L=105.93
L.C.=55.06	L.C.=70.07	L.C.=85.09	L.C.=74.77	L.C.=89.79	L.C.=104.80
Δ=28°59'06"	Δ=28°59'06"	Δ=28°59'06"	Δ=28°59'06"	Δ=28°59'06"	Δ=28°59'06"
D=52.08709°	D=40.92557°	D=33.70341°	D=30.35060°	D=31.93746°	D=27.36189°

- Legend**
- 2" diam galvanized iron pipe, 36" long.
 - 3/8" diameter steel rod, 30" long.
 - 1/2" diameter steel rod, 24" long.

RECEIVED BY
 Umatilla County Surveyor
 Date: 5/30/2013
 Rec'd By: M.K.
 No.: 13-166-B