

SEC. 25, 26, 28, 29, 30, 31, 32, 33, 34, 35 & 36, T. 4 N., R. 37 E., W.M.;
 SEC. 30, 31, 32 & 33, T. 4 N., R. 38 E., W.M.; SEC. 4 & 5, T. 3 N., R. 38 E., W.M.



NARRATIVE

The purpose of this survey is to monument the new right of way of Tollgate Section of the Weston-Elgin Highway, highway 204 from milepoint 10.68 to 20.58, in compliance with ORS 209.155 after completion of the construction project that took place in 2005-2007. A monument recovery and control survey was performed as part of this process prior to construction. Said survey established an initial control network and located existing monumentation along the route and Map of Survey 01-85-C was filed with the Umatilla County Surveyor (Note: Includes a later Affidavit of Correction for a portion of said survey). After said survey, further existing monuments were recovered by ODOT surveyors and are shown hereon.

The survey shown hereon consists of new control network points together with control points from the monument recovery survey. The basis for this survey is the same as the monument recovery and control survey and all new control points were checked against the existing control and the tied existing monuments. New control points were set due to the (anticipated) destruction of many of the original control monuments as the roadway corridor was much narrower before construction with intervisibility being difficult due to a large amount of forest cover.

The survey was performed with conventional total station, Leica TCA 1800, TCRP 1201 and survey-grade Leica 1200 GPS instrumentation. The control points set using GPS were further checked by occupation with total station and survey checks to previously recovered monuments in the forest cover.

REGISTERED
 PROFESSIONAL
 LAND SURVEYOR

 OREGON
 JULY 10, 1996
 CURTIS B. STOCKHOFF
 2765
 EXPIRES: JUNE 30, 2010



TO CONVERT FROM METERS TO S. I. FEET, DIVIDE BY 0.3048

OREGON DEPARTMENT OF TRANSPORTATION
 RIGHT-OF-WAY-BOUNDARY MONUMENTATION MAP
 TOLLGATE SECTION
 WESTON - ELGIN HIGHWAY
 UMATILLA COUNTY

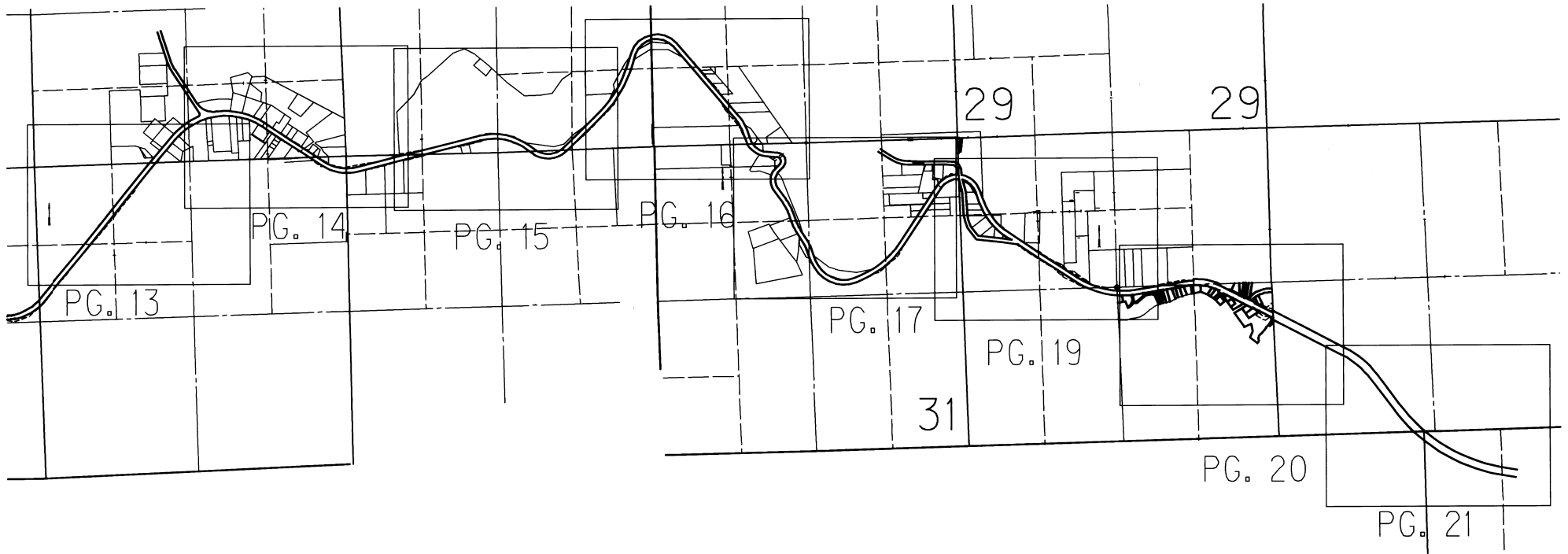
FOR ODOT REGION 5
 3012 ISLAND AVENUE
 LA GRANDE, OR 97850

KEY NO. 10267

OCTOBER 10, 2008
 NO SCALE
 SHEET 1 OF 21

RECORDED BY
 UMATILLA COUNTY SURVEYOR
 DATE 8-07
 BY KR
 09-47-B

SEC. 25, 26, 28, 29, 30, 31, 32, 33, 34, 35 & 36, T. 4 N., R. 37 E., W.M.;
 SEC. 30, 31, 32 & 33, T. 4 N., R. 38 E., W.M.; SEC. 4 & 5, T. 3 N., R. 38 E. W.M.



REGISTERED
 PROFESSIONAL
 LAND SURVEYOR

Curtis B. Stockhoff

OREGON
 JULY 10, 1996
 CURTIS B. STOCKHOFF
 2765

EXPIRES: JUNE 30, 2010

TO CONVERT FROM METERS TO S. I. FEET, DIVIDE BY 0.3048



OREGON DEPARTMENT OF TRANSPORTATION
 RIGHT-OF-WAY-BOUNDARY MONUMENTATION MAP
 TOLLGATE SECTION
 WESTON - ELGIN HIGHWAY
 UMATILLA COUNTY

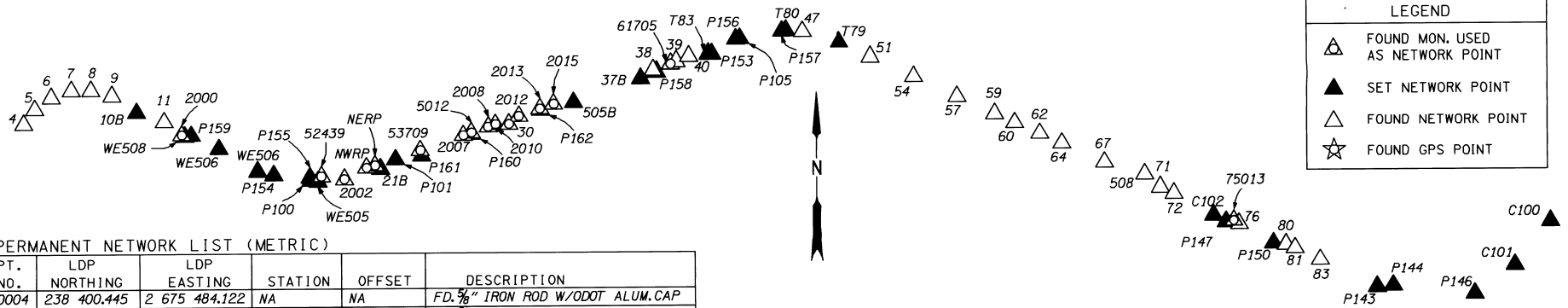
UMATILLA COUNTY SURVEYOR
 3-07
 KK
 09-49-B

FOR ODOT REGION 5
 3012 ISLAND AVENUE
 LA GRANDE, OR 97850

KEY NO. 10267

OCTOBER 10, 20088
 NO SCALE
 SHEET 2 OF 21

SEC. 25. 26. 28, 29, 30, 31, 32, 33, 34, 35 & 36, T. 4 N., R. 37 E., W.M.;
 SEC. 30, 31, 32 & 33, T.4 N., R.38 E., W.M.; SEC. 4 & 5, T.3 N., R.38 E., W.M.



LEGEND	
	FOUND MON. USED AS NETWORK POINT
	SET NETWORK POINT
	FOUND NETWORK POINT
	FOUND GPS POINT

PERMANENT NETWORK LIST (METRIC)

PT. NO.	LDP NORTHING	LDP EASTING	STATION	OFFSET	DESCRIPTION
00004	238 400.445	2 675 484.122	NA	NA	FD. 5/8" IRON ROD W/ODOT ALUM. CAP
00005	238 463.807	2 675 532.637	NA	NA	FD. 5/8" IRON ROD W/ODOT ALUM. CAP
00006	238 515.539	2 675 603.998	NA	NA	FD. 5/8" IRON ROD W/ODOT ALUM. CAP
00007	238 544.002	2 675 690.921	NA	NA	FD. 5/8" IRON ROD W/ODOT ALUM. CAP
00008	238 545.279	2 675 774.676	NA	NA	FD. 5/8" IRON ROD W/ODOT ALUM. CAP
00009	238 522.079	2 675 866.179	NA	NA	FD. 5/8" IRON ROD W/ODOT ALUM. CAP
0010B	238 449.455	2 675 972.351	NA	NA	FD. 5/8" IRON ROD W/ODOT ALUM. CAP
00011	238 408.368	2 676 091.066	18+433.174	6.745 LT.	FD. 5/8" IRON ROD W/ODOT ALUM. CAP
2000	238 350.100	2 676 167.975	18+528.193	10.029 RT.	FD. 5/8" REBAR
WE508	238 344.169	2 676 180.913	18+542.412	9.406 RT.	FD. 5/8" IRON ROD W/ODOT ALUM. CAP
P159	238 346.820	2 676 209.206	18+566.381	5.858 LT.	SET 5/8" IRON ROD W/ODOT ALUM. CAP
WE507	238 288.143	2 676 328.944	18+699.703	8.257 LT.	SET 5/8" IRON ROD W/ODOT ALUM. CAP
WE506	238 190.072	2 676 495.840	188+91.828	10.948 RT.	SET 5/8" IRON ROD W/ODOT ALUM. CAP
P154	238 174.810	2 676 564.020	18+960.768	5.712 RT.	SET 5/8" IRON ROD W/ODOT ALUM. CAP
P100	238 151.272	2 676 724.205	19+121.731	6.038 RT.	SET 5/8" IRON ROD W/ODOT ALUM. CAP
P155	238 162.633	2 676 902.711	19+118.280	5.190 LT.	SET 5/8" IRON ROD W/ODOT ALUM. CAP
WE505	238 145.558	2 676 755.385	19+152.659	11.201 RT.	SET 5/8" IRON ROD W/ODOT ALUM. CAP
52439	238 167.436	2 676 769.663	19+167.197	10.501 LT.	FD. BENCH MARK
2002	238 155.513	2 676 869.490	19+265.715	10.059 RT.	FD. 1" IRON PIPE
NWRP	238 203.430	2 676 965.901	19+370.623	15.775 LT.	FD. IRON ROD
53141	238 198.741	2 676 995.613	19+397.923	2.684 LT.	FD. RAILROAD SPIKE
NERP	238 213.736	2 677 002.711	19+409.300	14.818 LT.	FD. IRON ROD
Q21B	238 198.920	2 677 026.950	19+427.756	6.818 RT.	FD. 5/8" IRON ROD W/ODOT ALUM. CAP
P101	238 239.136	2 677 092.407	19+502.689	9.973 LT.	SET 5/8" IRON ROD W/ODOT ALUM. CAP
53709	238 278.769	2 677 198.468	19+615.878	12.737 LT.	FD. 5/8" IRON ROD
P161	238 253.614	2 677 203.935	19+612.818	12.823 RT.	SET 5/8" IRON ROD W/ODOT ALUM. CAP
2007	238 343.138	2 677 384.760	19+812.977	12.636 LT.	FD. 2" IRON PIPE
P160	238 347.764	2 677 420.969	19+848.708	5.165 LT.	SET 5/8" IRON ROD W/ODOT ALUM. CAP
5012	238 355.065	2 677 419.611	19+849.813	12.509 LT.	FD. IRON ROD
2008	238 380.204	2 677 491.849	19+926.299	12.638 LT.	FD. 5/8" REBAR
2010	238 391.178	2 677 523.537	19+959.834	12.645 LT.	FD. 5/8" REBAR
0030	238 391.796	2 677 581.756	20+015.052	5.812 RT.	FD. 5/8" IRON ROD W/ODOT ALUM. CAP
2012	238 426.077	2 677 624.363	20+066.529	12.648 LT.	FD. 5/8" REBAR
2013	238 457.655	2 677 715.712	20+163.182	12.612 LT.	FD. 5/8" REBAR
P162	238 451.214	2 677 717.861	20+163.107	5.822 LT.	SET 5/8" IRON ROD W/ODOT ALUM. CAP
2015	238 478.297	2 677 775.362	20+226.303	12.609 LT.	FD. 5/8" REBAR
505B	238 483.345	2 677 860.198	20+308.124	10.368 RT.	SET 5/8" IRON ROD W/ODOT ALUM. CAP
37B	238 584.989	2 678 152.343	20+617.446	9.865 RT.	FD. 5/8" IRON ROD W/ODOT ALUM. CAP
38	238 621.457	2 678 205.158	20+679.284	7.323 LT.	FD. 5/8" IRON ROD W/ODOT ALUM. CAP
P158	238 613.053	2 678 221.887	20+692.345	6.090 RT.	SET 5/8" IRON ROD W/ODOT ALUM. CAP
61705	238 645.812	2 678 281.458	20+759.353	5.384 LT.	FD. RAILROAD SPIKE
39	238 656.279	2 678 305.486	20+785.483	7.417 LT.	FD. 5/8" IRON ROD W/ODOT ALUM. CAP
40	238 676.398	2 678 358.909	20+842.548	8.956 LT.	FD. 5/8" IRON ROD W/ODOT ALUM. CAP
T83	238 686.962	2 678 445.142	20+927.493	9.265 RT.	SET 5/8" IRON ROD W/ODOT ALUM. CAP
P153	238 686.277	2 678 458.701	20+940.083	14.347 RT.	SET 5/8" IRON ROD W/ODOT ALUM. CAP
P156	238 748.247	2 678 563.839	21+059.544	10.112 LT.	SET 5/8" IRON ROD W/ODOT ALUM. CAP
P105	238 750.769	2 678 582.192	21+077.678	6.903 LT.	SET 5/8" IRON ROD W/ODOT ALUM. CAP
P157	238 781.953	2 678 762.634	21+259.567	6.476 LT.	SET 5/8" IRON ROD W/ODOT ALUM. CAP
T80	238 784.309	2 678 780.195	21+276.895	8.812 LT.	FD. 5/8" IRON ROD W/PLASTIC CAP

PERMANENT NETWORK LIST (METRIC)

PT. NO.	LDP NORTHING	LDP EASTING	STATION	OFFSET	DESCRIPTION
47	238 779.265	2 678 852.689	21+348.445	9.445 LT.	FD. 5/8" IRON ROD W/ODOT ALUM. CAP
T79	238 733.159	2 679 013.402	21+513.650	10.048 LT.	FD. 5/8" IRON ROD W/PLASTIC CAP
51	238 669.604	2 679 148.983	21+663.099	7.567 LT.	FD. 5/8" IRON ROD W/ODOT ALUM. CAP
54	238 585.883	2 679 338.170	21+869.973	9.533 LT.	FD. 5/8" IRON ROD W/ODOT ALUM. CAP
57	238 499.092	2 679 524.706	22+075.702	7.609 LT.	FD. 5/8" IRON ROD W/ODOT ALUM. CAP
59	238 424.230	2 679 687.899	22+255.246	6.897 LT.	FD. 5/8" IRON ROD W/ODOT ALUM. CAP
60	238 384.606	2 679 772.708	22+348.849	5.872 LT.	FD. 5/8" IRON ROD W/ODOT ALUM. CAP
62	238 337.415	2 679 882.249	22+468.101	8.181 LT.	FD. 5/8" IRON ROD W/ODOT ALUM. CAP
64	238 293.210	2 679 976.863	22+572.525	7.037 LT.	FD. 5/8" IRON ROD W/ODOT ALUM. CAP
67	238 208.861	2 680 162.728	22+776.635	7.059 LT.	FD. 5/8" IRON ROD W/ODOT ALUM. CAP
508	238 157.293	2 680 334.714	22+954.556	31.194 LT.	FD. 5/8" IRON ROD W/ODOT ALUM. CAP
71	238 101.324	2 680 402.177	23+039.120	8.116 LT.	FD. 5/8" IRON ROD W/ODOT ALUM. CAP
72	238 074.951	2 680 461.288	23+103.847	8.534 LT.	FD. 5/8" IRON ROD W/ODOT ALUM. CAP
C102	237 980.963	2 680 631.505	23+297.692	6.689 RT.	SET 5/8" IRON ROD W/ODOT ALUM. CAP
P147	237 953.223	2 680 686.669	23+359.388	9.146 RT.	SET 5/8" IRON ROD W/ODOT ALUM. CAP
75013	237 958.382	2 680 721.056	23+388.568	9.766 LT.	FD. BRASS CAP SET IN CONCRETE
76	237 944.865	2 680 744.599	23+415.593	7.189 LT.	FD. 5/8" IRON ROD W/ODOT ALUM. CAP
P150	237 860.073	2 680 891.888	23+584.759	9.138 RT.	SET 5/8" IRON ROD W/ODOT ALUM. CAP
80	237 853.851	2 680 945.986	23+636.592	7.558 LT.	FD. 5/8" IRON ROD W/ODOT ALUM. CAP
81	237 837.602	2 680 986.657	23+680.341	9.573 LT.	FD. 5/8" IRON ROD W/ODOT ALUM. CAP
83	237 786.235	2 681 093.799	23+799.134	7.087 LT.	FD. 5/8" IRON ROD W/ODOT ALUM. CAP
P143	237 665.208	2 681 339.806	24+072.426	7.394 RT.	SET 5/8" IRON ROD W/ODOT ALUM. CAP
P150	237 860.073	2 680 891.888	23+584.759	9.138 RT.	SET 5/8" IRON ROD W/ODOT ALUM. CAP
80	237 853.851	2 680 945.986	23+636.592	7.558 LT.	FD. 5/8" IRON ROD W/ODOT ALUM. CAP
81	237 837.602	2 680 986.657	23+680.341	9.573 LT.	FD. 5/8" IRON ROD W/ODOT ALUM. CAP
83	237 786.235	2 681 093.799	23+799.134	7.087 LT.	FD. 5/8" IRON ROD W/ODOT ALUM. CAP
P143	237 665.208	2 681 339.806	24+072.426	7.394 RT.	SET 5/8" IRON ROD W/ODOT ALUM. CAP
P144	237 670.414	2 681 409.724	24+139.896	13.124 LT.	FD. 5/8" IRON ROD W/ODOT ALUM. CAP
P146	237 632.152	2 681 762.032	24+493.059	11.563 RT.	FD. 5/8" IRON ROD W/ODOT ALUM. CAP
C101	237 756.896	2 681 930.025	24+700.695	6.369 RT.	SET 5/8" IRON ROD W/ODOT ALUM. CAP

TO CONVERT FROM METERS TO S. I. FEET, DIVIDE BY 0.3048

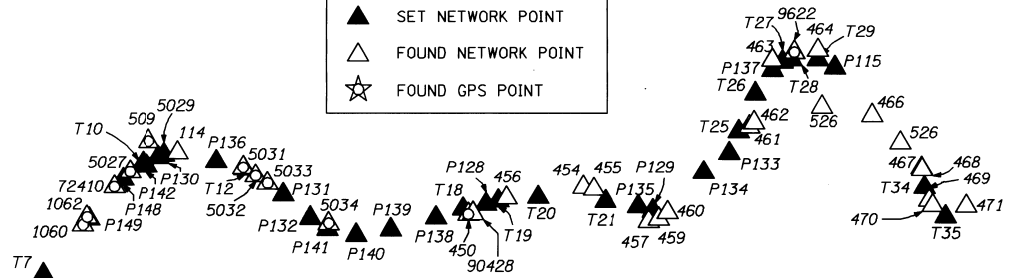
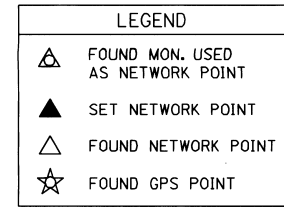
REGISTERED PROFESSIONAL LAND SURVEYOR

 OREGON
 JULY 10, 1996
 CURTIS B. STOCKHOFF
 2765
 EXPIRES: JUNE 30, 2010

METRIC OREGON DEPARTMENT OF TRANSPORTATION
 RIGHT-OF-WAY-BOUNDARY MONUMENTATION MAP
 TOLLGATE MONUMENTATION
 WESTON - ELGIN HIGHWAY
 UMATILLA COUNTY

FOR ODOT REGION 5
 3012 ISLAND AVENUE
 LA GRANDE, OR 97850
 KEY NO. 10267
 OCTOBER 10, 2008
 NO SCALE
 SHEET 3 OF 21

SEC. 25, 26, 28, 29, 30, 31, 32, 33, 34, 35 & 36, T. 4 N., R. 37 E., W.M.;
 SEC. 30, 31, 32 & 33, T.4 N., R.38 E., W.M.; SEC. 4 & 5, T.3 N., R.38 E., W.M.;



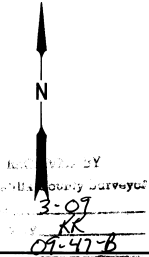
PERMANENT NETWORK LIST (METRIC)

PT. NO.	LDP		LDP		STATION	OFFSET	DESCRIPTION
	NORTHING	EASTING					
T7	238 261.437	2 682 320.593	25+338.511	10.723 LT.	FD. IRON ROD W/YELLOW PLASTIC CAP		
1060	238 441.558	2 682 465.512	25+569.685	12.578 LT.	FD. 3/8" IRON ROD		
1062	238 469.850	2 682 481.193	25+601.513	18.351 LT.	FD. 3/8" IRON ROD		
1063	238 469.960	2 682 484.761	25+603.857	15.658 LT.	FD. 3/8" IRON ROD		
P149	238 464.736	2 682 489.644	25+602.904	8.571 LT.	SET 3/8" IRON ROD W/ODOT ALUM. CAP		
1064	238 507.836	2 682 519.710	25+655.302	12.584 LT.	FD. 3/8" IRON ROD		
72410	238 582.846	2 682 581.123	25+751.667	13.520 LT.	FD. BRASS CAP		
P148	238 610.808	2 682 614.082	25+793.857	9.009 LT.	SET 3/8" IRON ROD W/ODOT ALUM. CAP		
5027	238 639.953	2 682 639.843	25+831.394	13.782 LT.	FD. 3/8" IRON ROD W/PLASTIC CAP		
T10	238 672.804	2 682 688.431	25+887.815	13.931 LT.	FD. 3/8" IRON ROD W/PLASTIC CAP		
P142	238 653.912	2 682 703.104	25+891.528	9.697 RT.	SET 3/8" IRON ROD W/ODOT ALUM. CAP		
P130	238 693.256	2 682 747.786	25+948.445	8.390 LT.	FD. 3/8" IRON ROD W/ODOT ALUM. CAP		
5029	238 703.358	2 682 768.019	25+970.107	12.090 LT.	FD. 3/8" IRON ROD W/PLASTIC CAP		
509	238 753.396	2 682 710.553	25+935.670	77.656 LT.	FD. 3/8" IRON ROD W/ALUM. CAP		
0114	238 711.911	2 682 819.286	26+020.427	10.648 LT.	FD. 3/8" IRON ROD W/ODOT ALUM. CAP		
P136	238 678.940	2 682 960.694	26+165.124	9.383 RT.	FD. 3/8" IRON ROD W/ODOT ALUM. CAP		
5031	238 655.635	2 683 060.636	26+265.743	12.079 LT.	FD. IRON ROD W/PLASTIC CAP		
T12	238 650.810	2 683 066.551	26+273.192	11.025 LT.	FD. 3/8" IRON ROD W/PLASTIC CAP		
5032	238 625.149	2 683 106.843	26+205.554	11.283 LT.	FD. IRON ROD W/PLASTIC CAP		
5033	238 596.600	2 683 150.845	26+372.974	12.009 LT.	BRASS PLATE SET ON CONC. POST		
P131	238 553.912	2 683 208.439	26+444.580	8.556 LT.	SET 3/8" IRON ROD W/ODOT ALUM. CAP		
P132	238 467.044	2 683 309.198	26+576.629	7.616 RT.	SET 3/8" IRON ROD W/ODOT ALUM. CAP		
5034	238 446.802	2 683 375.619	26+643.647	11.774 LT.	SET 3/8" IRON ROD		
P141	238 427.899	2 683 371.466	26+649.777	6.593 RT.	SET 3/8" IRON ROD W/ODOT ALUM. CAP		
P140	238 405.210	2 683 477.290	26+758.610	6.788 LT.	SET 3/8" IRON ROD W/ODOT ALUM. CAP		
P139	238 423.932	2 683 606.476	26+891.958	6.296 LT.	SET 3/8" IRON ROD W/ODOT ALUM. CAP		
P138	238 468.453	2 683 772.827	27+064.153	8.275 LT.	SET 3/8" IRON ROD W/ODOT ALUM. CAP		
T18	238 500.609	2 683 871.670	27+167.879	14.977 LT.	FD. 3/8" IRON ROD W/PLASTIC CAP		
0450	238 480.957	2 683 891.084	27+181.826	8.868 RT.	SET 3/8" IRON ROD W/ODOT ALUM. CAP		
90428	238 481.377	2 683 910.127	27+200.382	13.173 RT.	FD. 3/8" IRON ROD		
P126	238 518.105	2 683 957.336	27+255.210	10.733 LT.	SET 3/8" IRON ROD W/ODOT ALUM. CAP		
T19	238 530.559	2 684 002.976	27+302.513	11.508 LT.	FD. 3/8" IRON ROD W/PLASTIC CAP		
0456	238 538.142	2 684 032.678	27+333.166	11.506 LT.	FD. 3/8" IRON ROD W/ODOT ALUM. CAP		
T20	238 544.419	2 684 150.105	27+448.496	11.464 RT.	FD. 3/8" IRON ROD W/PLASTIC CAP		
0454	238 582.049	2 684 317.325	27+619.152	9.725 LT.	FD. 3/8" IRON ROD W/ODOT ALUM. CAP		
0455	238 574.410	2 684 354.886	27+656.085	12.275 LT.	FD. 3/8" IRON ROD W/ODOT ALUM. CAP		
T21	238 528.968	2 684 398.654	27+713.359	13.812 RT.	FD. 3/8" IRON ROD W/PLASTIC CAP		
P135	238 510.090	2 684 521.705	27+836.797	8.653 LT.	SET 3/8" IRON ROD W/ODOT ALUM. CAP		
P125	238 493.191	2 684 575.754	27+891.047	8.429 RT.	SET 3/8" IRON ROD W/ODOT ALUM. CAP		
0457	238 454.393	2 684 558.949	27+873.141	45.483 RT.	FD. 3/8" IRON ROD W/ODOT ALUM. CAP		
0459	238 464.273	2 684 595.820	27+904.037	40.448 RT.	FD. 3/8" IRON ROD W/ODOT ALUM. CAP		
0460	238 487.343	2 684 628.974	27+936.659	28.050 RT.	FD. 3/8" IRON ROD W/ODOT ALUM. CAP		
P134	238 636.656	2 684 762.332	28+127.704	7.910 LT.	SET 3/8" IRON ROD W/ODOT ALUM. CAP		
P133	238 708.401	2 684 854.516	28+243.691	4.763 RT.	SET 3/8" IRON ROD W/ODOT ALUM. CAP		
T25	238 789.420	2 684 888.347	28+331.133	13.174 LT.	FD. 3/8" IRON ROD W/PLASTIC CAP		

PERMANENT NETWORK LIST (METRIC)

PT. NO.	LDP		LDP		STATION	OFFSET	DESCRIPTION
	NORTHING	EASTING					
P134	238 636.656	2 684 762.332	28+127.704	7.910 LT.	SET 3/8" IRON ROD W/ODOT ALUM. CAP		
P133	238 708.401	2 684 854.516	28+243.691	4.763 RT.	SET 3/8" IRON ROD W/ODOT ALUM. CAP		
T25	238 789.420	2 684 888.347	28+331.133	13.174 LT.	FD. 3/8" IRON ROD W/PLASTIC CAP		
0461	238 803.191	2 684 928.402	28+360.270	17.524 RT.	FD. 3/8" IRON ROD W/ODOT ALUM. CAP		
0462	238 822.079	2 684 946.276	28+383.807	27.019 RT.	FD. 3/8" IRON ROD W/ODOT ALUM. CAP		
T26	238 925.246	2 684 948.961	28+480.389	8.355 LT.	FD. 3/8" IRON ROD W/PLASTIC CAP		
P137	239 009.898	2 685 013.145	28+583.535	9.148 LT.	SET 3/8" IRON ROD W/ODOT ALUM. CAP		
0463	239 047.160	2 685 013.691	28+602.775	39.487 LT.	FD. 3/8" IRON ROD W/ODOT ALUM. CAP		
T27	239 040.020	2 685 048.725	28+626.740	16.572 LT.	FD. 3/8" IRON ROD W/PLASTIC CAP		
T28	239 049.131	2 685 082.267	28+658.862	13.778 LT.	FD. 3/8" IRON ROD W/PLASTIC CAP		
9622	239 076.397	2 685 092.680	28+673.115	38.077 LT.	FD. IRON ROD		
0464	239 084.068	2 685 178.972	28+744.182	45.985 LT.	FD. 3/8" IRON ROD W/ODOT ALUM. CAP		
T29	239 050.116	2 685 179.652	28+750.757	12.881 LT.	FD. 3/8" IRON ROD W/PLASTIC CAP		
P115	239 020.105	2 685 242.109	28+816.481	9.212 LT.	SET 3/8" IRON ROD W/ODOT ALUM. CAP		
0466	238 848.625	2 685 378.502	29+033.871	7.885 RT.	FD. 3/8" IRON ROD W/ODOT ALUM. CAP		
0526	238 748.392	2 685 483.303	29+177.816	9.064 LT.	FD. 3/8" IRON ROD W/ODOT ALUM. CAP		
0467	238 655.081	2 685 561.768	29+298.807	15.353 LT.	FD. 3/8" IRON ROD W/ODOT ALUM. CAP		
0468	238 649.189	2 685 564.049	29+304.906	13.820 LT.	FD. 3/8" IRON ROD W/ODOT ALUM. CAP		
T34	238 580.257	2 685 572.724	29+366.425	18.396 RT.	FD. 3/8" IRON ROD W/PLASTIC CAP		
0469	238 534.104	2 685 590.158	29+414.305	30.293 RT.	FD. 3/8" IRON ROD W/ODOT ALUM. CAP		
0470	238 514.346	2 685 602.076	29+437.355	31.719 RT.	FD. 3/8" IRON ROD W/ODOT ALUM. CAP		
T35	238 471.758	2 685 649.944	29+499.859	16.120 RT.	FD. 3/8" IRON ROD W/PLASTIC CAP		

REGISTERED PROFESSIONAL LAND SURVEYOR
 OREGON
 JULY 10, 1996
 CURTIS B. STOCKHOFF
 2765
 EXPIRES: JUNE 30, 2010



TO CONVERT FROM METERS TO S. I. FEET, DIVIDE BY 0.3048

METRIC OREGON DEPARTMENT OF TRANSPORTATION
 RIGHT-OF-WAY-BOUNDARY MONUMENTATION MAP
 TOLLGATE SECTION
 WESTON - ELGIN HIGHWAY
 UMATILLA COUNTY

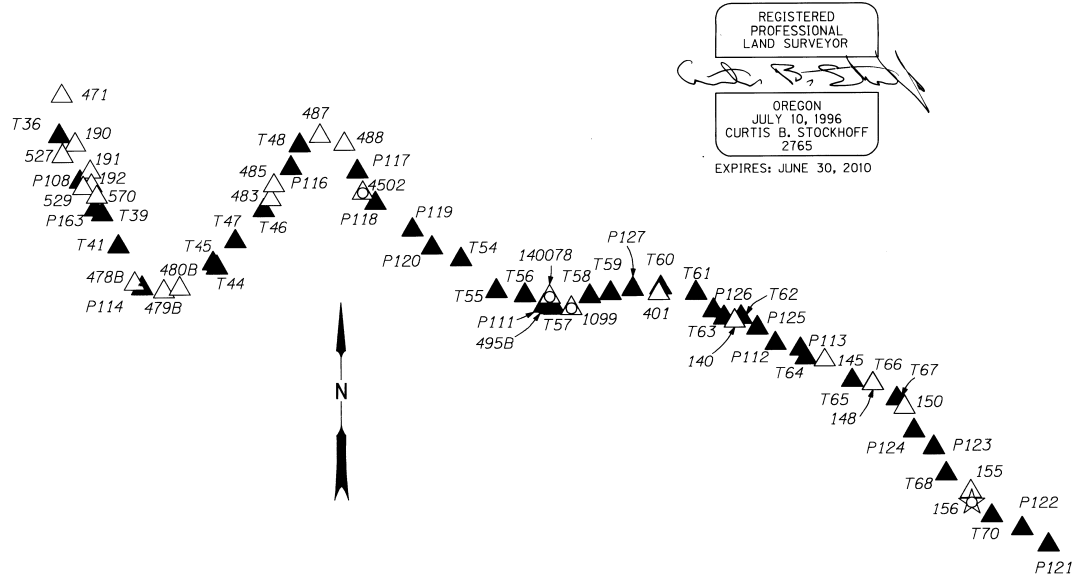
FOR ODOT REGION 5
 3012 ISLAND AVENUE
 LA GRANDE, OR 97850
 KEY NO. 10267

OCTOBER 10, 2008
 NO SCALE
 SHEET 4 OF 21

SEC. 25, 26, 28, 29, 30, 31, 32, 33, 34, 35 & 36, T. 4 N., R. 37 E., WM.;
 SEC. 30, 31, 32 & 33, T. 4 N., R. 38 E., WM.; SEC. 4 & 5, T. 3 N., R. 38 E.

PERMANENT NETWORK LIST

PT. NO.	LDP NORTHING	LDP EASTING	STATION	OFFSET	DESCRIPTION
0471	238 511.017	2 685 726.180	29+509.173	69.110 LT.	FD. 5/8" IRON ROD W/ODOT ALUM. CAP
T36	238 365.255	2 685 716.443	29+626.690	15.089 RT.	FD. 5/8" IRON ROD W/PLASTIC CAP
0190	238 333.803	2 685 775.218	29+681.969	21.988 LT.	FD. 5/8" IRON ROD W/ALUM. CAP
0527	238 292.600	2 685 728.246	29+697.756	38.491 RT.	FD. 5/8" IRON ROD W/ODOT ALUM. CAP
0191	238 234.515	2 685 830.652	29+793.443	30.517 LT.	FD. 5/8" IRON ROD W/ALUM. CAP
0192	238 183.798	2 685 834.839	29+841.469	15.392 LT.	FD. 5/8" IRON ROD W/ODOT ALUM. CAP
P108	238 197.691	2 685 792.705	29+812.933	18.608 RT.	SET 5/8" IRON ROD W/ODOT ALUM. CAP
0529	238 174.277	2 685 803.828	29+839.012	16.955 RT.	FD. 5/8" IRON ROD W/ODOT ALUM. CAP
0570	238 141.415	2 685 853.795	29+887.652	17.887 LT.	FD. 5/8" IRON ROD W/ODOT ALUM. CAP
P163	238 094.159	2 685 846.696	29+929.330	5.462 RT.	SET 5/8" IRON ROD W/ODOT ALUM. CAP
T39	238 075.163	2 685 873.958	29+956.735	13.325 LT.	FD. 5/8" IRON ROD W/PLASTIC CAP
T41	237 956.141	2 685 933.533	30+094.021	17.716 LT.	FD. 5/8" IRON ROD W/PLASTIC CAP
478B	237 820.127	2 685 992.710	30+223.020	46.407 RT.	SET 5/8" IRON ROD W/ODOT ALUM. CAP
P114	237 804.706	2 686 019.881	30+249.420	48.968 RT.	SET 5/8" IRON ROD W/ODOT ALUM. CAP
479B	237 791.869	2 686 100.082	30+318.717	41.199 RT.	SET 5/8" IRON ROD W/ODOT ALUM. CAP
480B	237 802.469	2 686 158.790	30+370.381	29.050 RT.	SET 5/8" IRON ROD W/ODOT ALUM. CAP
T44	237 878.294	2 686 301.153	30+522.163	7.078 RT.	FD. 5/8" IRON ROD W/PLASTIC CAP
T45	237 892.724	2 686 286.305	30+518.782	13.355 LT.	FD. 5/8" IRON ROD W/PLASTIC CAP
T47	237 973.129	2 686 369.152	30+638.095	9.489 LT.	FD. 5/8" IRON ROD W/PLASTIC CAP
T46	238 088.493	2 686 473.619	30+792.598	11.736 RT.	FD. 5/8" IRON ROD W/PLASTIC CAP
0483	238 129.084	2 686 498.877	30+840.378	10.079 RT.	FD. 5/8" IRON ROD W/ODOT ALUM. CAP
0485	238 181.031	2 686 511.705	30+890.656	8.228 LT.	FD. 5/8" IRON ROD W/ODOT ALUM. CAP
P116	238 245.999	2 686 574.637	30+979.674	7.805 RT.	SET 5/8" IRON ROD W/ODOT ALUM. CAP
T48	238 328.141	2 686 607.660	31+063.219	15.705 LT.	FD. 5/8" IRON ROD W/PLASTIC CAP
0487	238 361.767	2 686 682.141	31+136.768	13.683 LT.	FD. 5/8" IRON ROD W/ODOT ALUM. CAP
0488	238 332.174	2 686 772.492	31+222.844	14.501 LT.	FD. 5/8" IRON ROD W/ODOT ALUM. CAP
P117	238 231.801	2 686 820.268	31+329.453	6.032 LT.	SET 5/8" IRON ROD W/ODOT ALUM. CAP
4502	238 152.661	2 686 839.105	31+408.687	10.214 RT.	BR. DISC IN CONC., BM X514
P118	238 114.234	2 686 886.064	31+466.933	5.954 LT.	SET 5/8" IRON ROD W/ODOT ALUM. CAP
P119	238 013.720	2 687 022.546	31+638.613	8.238 LT.	SET 5/8" IRON ROD W/ODOT ALUM. CAP
P120	237 947.307	2 687 094.130	31+734.955	7.673 RT.	SET 5/8" IRON ROD W/ODOT ALUM. CAP
T54	237 903.556	2 687 201.395	31+848.559	15.000 LT.	FD. 5/8" IRON ROD W/PLASTIC CAP
T55	237 789.533	2 687 331.245	32+019.088	10.574 RT.	FD. 5/8" IRON ROD W/PLASTIC CAP
T56	237 773.485	2 687 436.690	32+123.351	17.127 LT.	FD. 5/8" IRON ROD W/PLASTIC CAP
140078	237 767.816	2 687 527.898	32+219.597	27.284 LT.	FD. BRASS CAP
P111	237 735.976	2 687 507.139	32+200.901	6.087 RT.	SET 5/8" IRON ROD W/ODOT ALUM. CAP
495B	237 730.351	2 687 529.882	32+223.553	10.034 RT.	SET 5/8" IRON ROD W/ODOT ALUM. CAP
T57	237 728.418	2 687 544.260	32+237.616	11.555 RT.	FD. 5/8" IRON ROD W/PLASTIC CAP
T58	237 769.030	2 687 676.198	32+372.708	16.325 LT.	FD. 5/8" IRON ROD W/PLASTIC CAP
T59	237 780.263	2 687 752.983	32+450.316	15.594 LT.	FD. 5/8" IRON ROD W/PLASTIC CAP
P127	237 794.776	2 687 835.513	32+534.096	17.219 LT.	SET 5/8" IRON ROD W/ODOT ALUM. CAP
0401	237 779.617	2 687 932.299	32+628.486	10.323 RT.	FD. 5/8" IRON ROD W/ODOT ALUM. CAP
T60	237 799.687	2 687 938.842	32+635.927	9.435 LT.	FD. 5/8" IRON ROD W/PLASTIC CAP
T61	237 779.573	2 688 068.624	32+762.425	17.056 LT.	FD. 5/8" IRON ROD W/PLASTIC CAP
P126	237 716.254	2 688 132.136	32+847.017	11.064 RT.	SET 5/8" IRON ROD W/ODOT ALUM. CAP
T63	237 689.601	2 688 171.641	32+894.342	16.660 RT.	FD. 5/8" IRON ROD W/PLASTIC CAP
0140	237 677.922	2 688 210.528	32+934.259	9.229 RT.	FD. 5/8" IRON ROD W/ODOT ALUM. CAP
T62	237 691.604	2 688 234.120	32+948.963	13.739 LT.	FD. 5/8" IRON ROD W/PLASTIC CAP
P125	237 651.666	2 688 294.465	33+020.899	5.881 LT.	SET 5/8" IRON ROD W/ODOT ALUM. CAP
P112	237 593.735	2 688 360.812	33+106.412	15.224 RT.	SET 5/8" IRON ROD W/ODOT ALUM. CAP
P113	237 572.014	2 688 452.557	33+197.916	7.494 LT.	SET 5/8" IRON ROD W/ODOT ALUM. CAP
T64	237 538.280	2 688 471.753	33+230.432	13.700 RT.	FD. 5/8" IRON ROD W/PLASTIC CAP
0145	237 529.572	2 688 540.896	33+295.882	10.232 LT.	FD. 5/8" IRON ROD W/ODOT ALUM. CAP
T65	237 452.511	2 688 642.023	33+421.075	11.946 RT.	FD. 5/8" IRON ROD W/PLASTIC CAP



PERMANENT NETWORK LIST

PT. NO.	LDP NORTHING	LDP EASTING	STATION	OFFSET	DESCRIPTION
T66	237 441.219	2 688 717.580	33+493.095	13.051 LT.	FD. 5/8" IRON ROD W/PLASTIC CAP
0148	237 439.886	2 688 717.496	33+493.654	11.841 LT.	FD. 5/8" IRON ROD W/ODOT ALUM. CAP
T67	237 384.560	2 688 805.897	33+595.510	14.262 LT.	FD. 5/8" IRON ROD W/PLASTIC CAP
0150	237 353.734	2 688 833.962	33+635.744	10.808 LT.	FD. 5/8" IRON ROD W/ODOT ALUM. CAP
P124	237 268.515	2 688 868.485	33+723.509	17.122 RT.	SET 5/8" IRON ROD W/ODOT ALUM. CAP
P123	237 208.053	2 688 941.394	33+815.461	6.300 LT.	SET 5/8" IRON ROD W/ODOT ALUM. CAP
T68	237 112.409	2 688 986.318	33+918.611	15.073 RT.	FD. 5/8" IRON ROD W/PLASTIC CAP
0155	237 046.623	2 689 077.341	34+028.092	8.948 LT.	FD. 5/8" IRON ROD W/ODOT ALUM. CAP
0156	237 005.120	2 689 080.005	34+058.450	19.287 RT.	FD. 5/8" IRON ROD W/ODOT ALUM. CAP
T70	236 954.158	2 689 153.307	34+145.869	11.737 RT.	FD. 5/8" IRON ROD W/PLASTIC CAP
P122	236 905.730	2 689 264.909	34+265.763	7.950 LT.	SET 5/8" IRON ROD W/ODOT ALUM. CAP
P121	236 844.818	2 689 362.164	34+379.831	6.277 RT.	SET 5/8" IRON ROD W/ODOT ALUM. CAP

LEGEND

- △ FOUND MON. USED AS NETWORK POINT
- ▲ SET NETWORK POINT
- △ FOUND NETWORK POINT
- ☆ FOUND GPS POINT

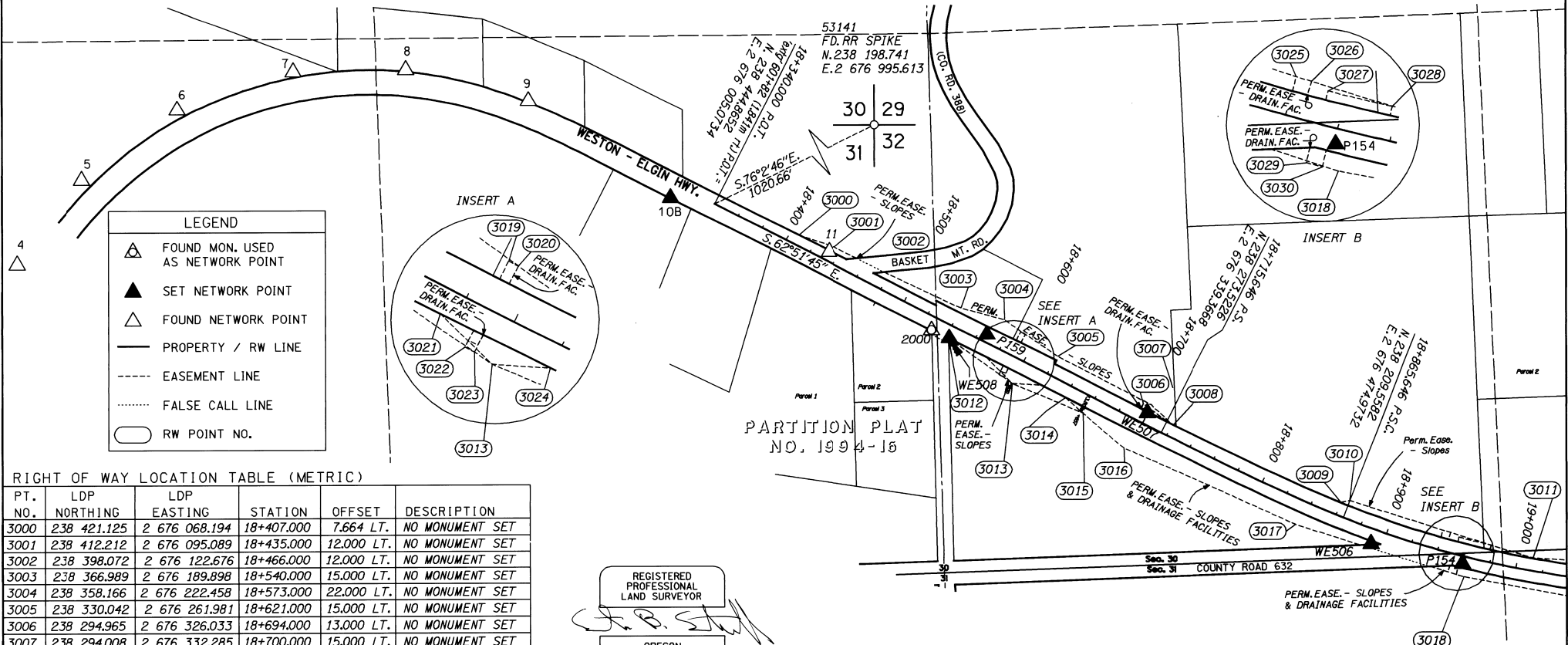
TO CONVERT FROM METERS TO S. I. FEET, DIVIDE BY 0.3048

OREGON DEPARTMENT OF TRANSPORTATION
 RIGHT-OF-WAY-BOUNDARY MONUMENTATION MAP
 TOLLGATE SECTION
 WESTON - ELGIN HIGHWAY
 UMATILLA COUNTY

FOR ODOT REGION 5
 3012 ISLAND AVENUE
 LA GRANDE, OR 97850

OCTOBER 10, 2008
 NO SCALE
 SHEET 5 OF 21

S/2 SEC. 30, NE 1/4 SEC. 31, T. 4 N., R. 37 E., W.M.



LEGEND

- ▲ FOUND MON. USED AS NETWORK POINT
- ▲ SET NETWORK POINT
- △ FOUND NETWORK POINT
- PROPERTY / RW LINE
- - - - EASEMENT LINE
- FALSE CALL LINE
- RW POINT NO.

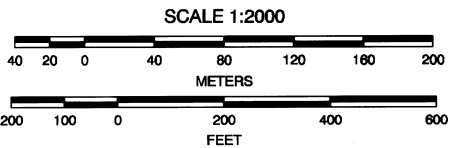
RIGHT OF WAY LOCATION TABLE (METRIC)

PT. NO.	LDP NORTHING	LDP EASTING	STATION	OFFSET	DESCRIPTION
3000	238 421.125	2 676 068.194	18+407.000	7.664 LT.	NO MONUMENT SET
3001	238 412.212	2 676 095.089	18+435.000	12.000 LT.	NO MONUMENT SET
3002	238 398.072	2 676 122.676	18+466.000	12.000 LT.	NO MONUMENT SET
3003	238 366.989	2 676 189.898	18+540.000	15.000 LT.	NO MONUMENT SET
3004	238 358.166	2 676 222.458	18+573.000	22.000 LT.	NO MONUMENT SET
3005	238 330.042	2 676 261.981	18+621.000	15.000 LT.	NO MONUMENT SET
3006	238 294.965	2 676 326.033	18+694.000	13.000 LT.	NO MONUMENT SET
3007	238 294.008	2 676 332.285	18+700.000	15.000 LT.	NO MONUMENT SET
3008	238 279.409	2 676 348.398	18+721.000	9.358 LT.	NO MONUMENT SET
3009	238 220.488	2 676 473.281	18+860.000	9.530 LT.	NO MONUMENT SET
3010	238 221.913	2 676 479.835	18+865.646	13.277 LT.	NO MONUMENT SET
3011	238 179.376	2 676 616.307	19+011.000	10.000 LT.	NO MONUMENT SET
3012	238 345.106	2 676 178.682	18+540.000	9.589 RT.	NO MONUMENT SET
3013	238 310.254	2 676 228.241	18+600.000	18.000 RT.	NO MONUMENT SET
3014	238 299.691	2 676 267.775	18+640.000	9.367 RT.	NO MONUMENT SET
3015	238 288.254	2 676 281.016	18+657.000	13.506 RT.	NO MONUMENT SET
3016	238 262.016	2 676 311.392	18+696.000	23.000 RT.	NO MONUMENT SET
3017	238 204.815	2 676 439.479	18+835.000	18.000 RT.	NO MONUMENT SET
3018	238 165.002	2 676 564.919	18+964.000	15.000 RT.	NO MONUMENT SET
3019	238 348.654	2 676 234.439	18+588.000	19.000 LT.	NO MONUMENT SET
3020	238 346.829	2 676 237.998	18+592.000	19.000 LT.	NO MONUMENT SET
3021	238 329.479	2 676 208.878	18+574.000	9.723 RT.	NO MONUMENT SET
3022	238 316.617	2 676 218.018	18+588.000	17.000 RT.	NO MONUMENT SET
3023	238 314.793	2 676 221.578	18+592.000	17.000 RT.	NO MONUMENT SET
3024	238 308.718	2 676 249.928	18+620.000	9.475 RT.	NO MONUMENT SET
3025	238 200.181	2 676 549.485	18+940.000	15.000 LT.	NO MONUMENT SET
3026	238 198.594	2 676 555.149	18+946.000	15.000 LT.	NO MONUMENT SET
3027	238 194.866	2 676 561.258	18+953.000	13.000 LT.	NO MONUMENT SET
3028	238 188.941	2 676 585.103	18+978.000	13.000 LT.	NO MONUMENT SET
3029	238 168.070	2 676 553.074	18+952.000	15.000 RT.	NO MONUMENT SET
3030	238 166.513	2 676 558.990	18+958.000	15.000 RT.	NO MONUMENT SET

PERMANENT NETWORK LIST (METRIC)

PT. NO.	LDP NORTHING	LDP EASTING	STATION	OFFSET	DESCRIPTION
4	238 400.445	2 675 484.122	NA	NA	* FD. 3/8" IRON ROD W/ODOT ALUM. CAP
5	238 463.807	2 675 532.637	NA	NA	* FD. 3/8" IRON ROD W/ODOT ALUM. CAP
6	238 515.539	2 675 603.998	NA	NA	* FD. 3/8" IRON ROD W/ODOT ALUM. CAP
7	238 544.002	2 675 690.921	NA	NA	* FD. 3/8" IRON ROD W/ODOT ALUM. CAP
8	238 545.279	2 675 774.676	NA	NA	* FD. 3/8" IRON ROD W/ODOT ALUM. CAP
9	238 522.079	2 675 866.179	NA	NA	* FD. 3/8" IRON ROD W/ODOT ALUM. CAP
10B	238 449.455	2 675 972.351	NA	NA	**FD. 3/8" IRON ROD W/ODOT ALUM. CAP
11	238 408.368	2 676 091.066	18+433.174	6.745 LT.	* FD. 3/8" IRON ROD W/ODOT ALUM. CAP
2000	238 350.100	2 676 167.975	18+528.193	10.029 RT.	* FD. 3/8" REBAR
WE508	238 344.169	2 676 180.913	18+542.412	9.406 RT.	SET 3/8" IRON ROD W/ODOT ALUM. CAP
P159	238 346.820	2 676 209.206	18+566.381	5.858 LT.	SET 3/8" IRON ROD W/ODOT ALUM. CAP
WE507	238 288.143	2 676 328.944	18+699.703	8.257 LT.	SET 3/8" IRON ROD W/ODOT ALUM. CAP
WE506	238 190.072	2 676 495.840	188+91.828	10.948 RT.	SET 3/8" IRON ROD W/ODOT ALUM. CAP
P154	238 174.810	2 676 564.020	18+960.768	5.712 RT.	SET 3/8" IRON ROD W/ODOT ALUM. CAP

REGISTERED PROFESSIONAL LAND SURVEYOR
 OREGON
 JULY 10, 1996
 CURTIS B. STOCKHOFF
 2165
 EXPIRES: JUNE 30, 2010



TO CONVERT FROM METERS TO S. I. FEET, DIVIDE BY 0.3048

METRIC OREGON DEPARTMENT OF TRANSPORTATION
 RIGHT-OF-WAY-BOUNDARY MONUMENTATION MAP
 TOLLGATE SECTION
 WESTON - ELGIN HIGHWAY
 UMATILLA COUNTY

FOR ODOT REGION 5
 3012 ISLAND AVENUE
 LA GRANDE, OR 97850

OCTOBER 10, 2008
 SCALE: 1mm = 2m
 KEY NO. 10267 SHEET 6 OF 21

SE 1/4 SEC. 30, NE 1/4 SEC. 31, W 1/2 SEC. 29, T. 4 N., R. 37 E., W.M.

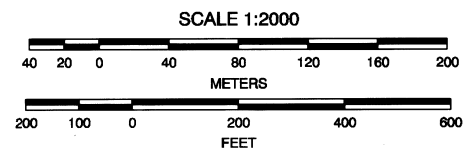
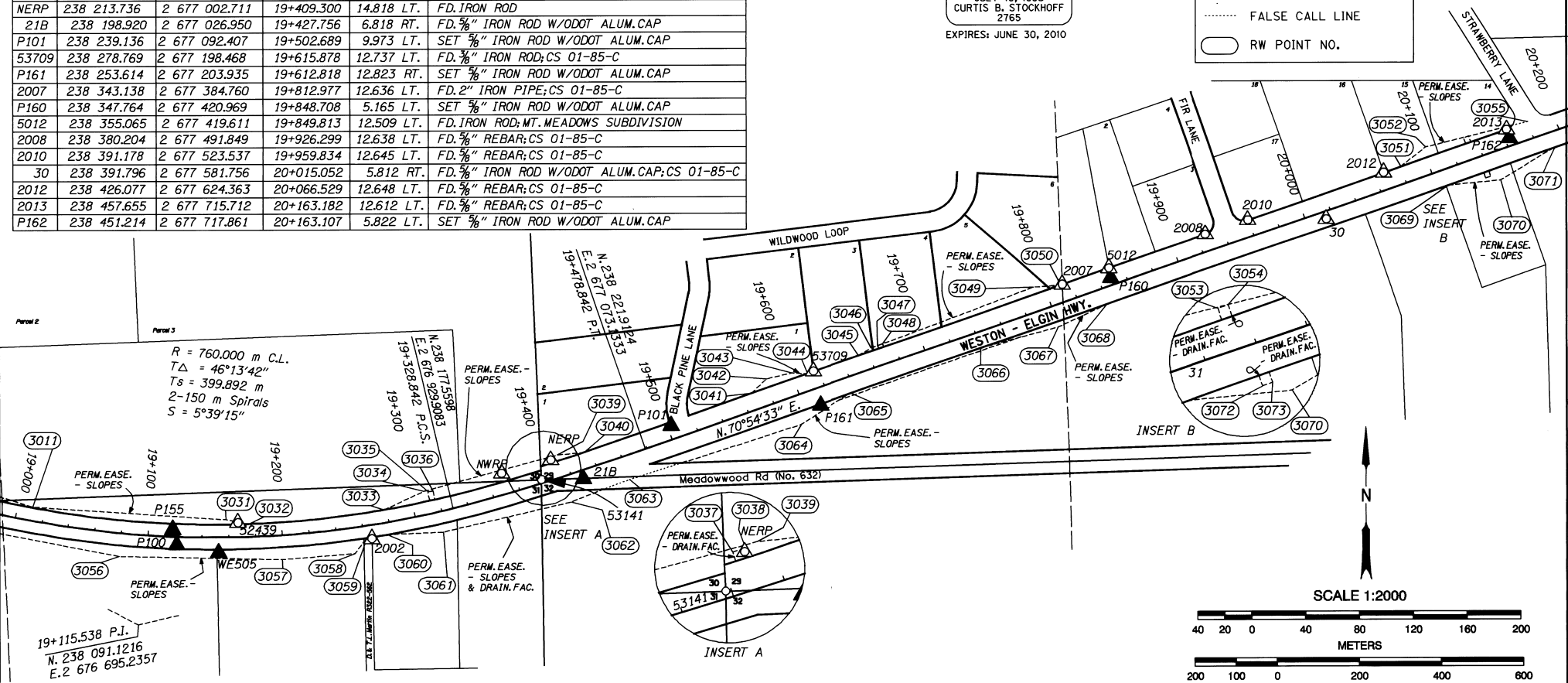
PERMANENT NETWORK LIST (METRIC)

PT. NO.	LDP NORTHING	LDP EASTING	STATION	OFFSET	DESCRIPTION
P100	238 151.272	2 676 724.205	19+121.731	6.038 RT.	SET 5/8" IRON ROD W/ODOT ALUM.CAP
P155	238 162.633	2 676 721.208	19+118.282	5.193 LT.	SET 5/8" IRON ROD W/ODOT ALUM.CAP
WE505	238 145.558	2 676 755.385	19+152.659	11.201 RT.	SET 5/8" IRON ROD W/ODOT ALUM.CAP
52439	238 167.436	2 676 769.663	19+167.197	10.501 LT.	FD.BENCH MARK;CS 01-85-C
2002	238 155.513	2 676 869.490	19+265.715	10.059 RT.	FD. 1' IRON PIPE;CS 01-85-C
NWRP	238 203.430	2 676 965.901	19+370.623	15.775 LT.	FD.IRON ROD
53141	238 198.741	2 676 995.613	19+397.923	2.684 LT.	FD.RAILROAD SPIKE;CS 01-85-C
NERP	238 213.736	2 677 002.711	19+409.300	14.818 LT.	FD.IRON ROD
21B	238 198.920	2 677 026.950	19+427.756	6.818 RT.	FD.5/8" IRON ROD W/ODOT ALUM.CAP
P101	238 239.136	2 677 092.407	19+502.689	9.973 LT.	SET 5/8" IRON ROD W/ODOT ALUM.CAP
53709	238 278.769	2 677 198.468	19+615.878	12.737 LT.	FD.5/8" IRON ROD;CS 01-85-C
P161	238 253.614	2 677 203.935	19+612.818	12.823 RT.	SET 5/8" IRON ROD W/ODOT ALUM.CAP
2007	238 343.138	2 677 384.760	19+812.977	12.636 LT.	FD.2" IRON PIPE;CS 01-85-C
P160	238 347.764	2 677 420.969	19+848.708	5.165 LT.	SET 5/8" IRON ROD W/ODOT ALUM.CAP
5012	238 355.065	2 677 419.611	19+849.813	12.509 LT.	FD.IRON ROD;MT.MEADOWS SUBDIVISION
2008	238 380.204	2 677 491.849	19+926.299	12.638 LT.	FD.5/8" REBAR;CS 01-85-C
2010	238 391.178	2 677 523.537	19+959.834	12.645 LT.	FD.5/8" REBAR;CS 01-85-C
30	238 391.796	2 677 581.756	20+015.052	5.812 RT.	FD.5/8" IRON ROD W/ODOT ALUM.CAP;CS 01-85-C
2012	238 426.077	2 677 624.363	20+066.529	12.648 LT.	FD.5/8" REBAR;CS 01-85-C
2013	238 457.655	2 677 715.712	20+163.182	12.612 LT.	FD.5/8" REBAR;CS 01-85-C
P162	238 451.214	2 677 717.861	20+163.107	5.822 LT.	SET 5/8" IRON ROD W/ODOT ALUM.CAP

LEGEND

- ▲ FOUND MON. USED AS NETWORK POINT
- ▲ SET NETWORK POINT
- △ FOUND NETWORK POINT
- PROPERTY / RW LINE
- - - - EASEMENT LINE
- FALSE CALL LINE
- RW POINT NO.

REGISTERED PROFESSIONAL LAND SURVEYOR
 OREGON
 JULY 10, 1996
 CURTIS B. STOCKHOFF
 2765
 EXPIRES: JUNE 30, 2010



TO CONVERT FROM METERS TO S. I. FEET, DIVIDE BY 0.3048

SEE PAGE 8 FOR RIGHT OF WAY POINT LOCATION TABLE

METRIC OREGON DEPARTMENT OF TRANSPORTATION
 RIGHT-OF-WAY-BOUNDARY MONUMENTATION MAP
 TOLLGATE SECTION
 WESTON - ELGIN HIGHWAY
 UMATILLA COUNTY

FOR ODOT REGION 5
 3012 ISLAND AVENUE
 LA GRANDE, OR 97850

OCTOBER 10, 2008
 SCALE: 1mm = 2m
 KEY NO. 10267
 SHEET 7 OF 21

3-07
 09-47-B

SE 1/4 SEC. 30, NE 1/4 SEC. 31, W 1/2 SEC. 29, T. 4 N., R. 37 E., W.M.

RIGHT OF WAY LOCATION TABLE (METRIC)

PT. NO.	LDP NORTHING	LDP EASTING	STATION	OFFSET	DESCRIPTION
3011	238 179.376	2 676 616.307	19+011.000	10.000 LT.	NO MONUMENT SET
3031	238 169.792	2 676 760.570	19+158.000	13.000 LT.	NO MONUMENT SET
3032	238 166.537	2 676 777.391	19+175.000	9.394 LT.	NO MONUMENT SET
3033	238 176.648	2 676 878.537	19+278.000	9.371 LT.	NO MONUMENT SET
3034	238 190.037	2 676 907.991	19+310.000	17.000 LT.	NO MONUMENT SET
3035	238 189.676	2 676 911.070	19+313.000	16.000 LT.	NO MONUMENT SET
3036	238 190.516	2 676 914.895	19+317.000	16.000 LT.	NO MONUMENT SET
3037	238 213.560	2 676 998.295	19+405.000	16.000 LT.	NO MONUMENT SET
3038	238 215.074	2 677 003.007	19+410.000	16.000 LT.	NO MONUMENT SET
3039	238 217.554	2 677 007.408	19+415.000	17.000 LT.	NO MONUMENT SET
3040	238 219.599	2 677 027.654	19+435.000	12.566 LT.	NO MONUMENT SET
3041	238 262.636	2 677 152.328	19+567.000	12.581 LT.	NO MONUMENT SET
3042	238 273.280	2 677 163.459	19+581.000	19.000 LT.	NO MONUMENT SET
3043	238 277.604	2 677 182.068	19+600.000	17.000 LT.	NO MONUMENT SET
3044	238 277.021	2 677 193.911	19+611.000	12.575 LT.	NO MONUMENT SET
3045	238 290.425	2 677 232.657	19+652.000	12.569 LT.	NO MONUMENT SET
3046	238 296.319	2 677 242.257	19+663.000	15.000 LT.	NO MONUMENT SET
3047	238 297.955	2 677 246.982	19+668.000	15.000 LT.	NO MONUMENT SET
3048	238 299.263	2 677 250.762	19+672.000	15.000 LT.	NO MONUMENT SET
3049	238 341.346	2 677 363.181	19+792.000	18.000 LT.	NO MONUMENT SET
3050	238 342.734	2 677 383.865	19+812.000	12.547 LT.	NO MONUMENT SET
3051	238 430.351	2 677 637.138	20+080.000	12.508 LT.	NO MONUMENT SET
3052	238 444.626	2 677 655.478	20+102.000	20.000 LT.	NO MONUMENT SET
3053	238 451.276	2 677 683.864	20+131.000	17.000 LT.	NO MONUMENT SET
3054	238 452.585	2 677 687.644	20+135.000	17.000 LT.	NO MONUMENT SET
3055	238 463.523	2 677 731.477	20+180.000	13.000 LT.	NO MONUMENT SET
3056	238 143.108	2 676 681.221	19+080.000	17.000 RT.	NO MONUMENT SET
3057	238 140.333	2 676 802.809	19+199.000	18.000 RT.	NO MONUMENT SET
3058	238 144.679	2 676 856.923	19+252.000	19.000 RT.	NO MONUMENT SET
3059	238 156.087	2 676 865.600	19+262.000	8.914 RT.	NO MONUMENT SET
3060	238 158.448	2 676 880.590	19+277.000	8.917 RT.	NO MONUMENT SET
3061	238 160.478	2 676 922.623	19+318.000	15.000 RT.	NO MONUMENT SET
3062	238 182.065	2 677 017.921	19+414.000	20.000 RT.	NO MONUMENT SET
3063	238 198.740	2 677 061.186	19+460.000	18.000 RT.	NO MONUMENT SET
3064	238 240.059	2 677 189.772	19+595.000	21.000 RT.	NO MONUMENT SET
3065	238 262.478	2 677 226.457	19+637.000	11.812 RT.	NO MONUMENT SET
3066	238 296.152	2 677 323.797	19+740.000	11.827 RT.	NO MONUMENT SET
3067	238 311.832	2 677 381.862	19+800.000	16.000 RT.	NO MONUMENT SET
3068	238 328.845	2 677 418.302	19+840.000	11.841 RT.	NO MONUMENT SET
3069	238 416.790	2 677 672.519	20+109.000	11.880 RT.	NO MONUMENT SET
3070	238 420.599	2 677 771.413	20+147.000	21.000 RT.	NO MONUMENT SET
3071	238 444.252	2 677 751.904	20+193.000	11.892 RT.	NO MONUMENT SET
3072	238 422.054	2 677 700.327	20+137.000	16.000 RT.	NO MONUMENT SET
3073	238 423.362	2 677 704.107	20+141.000	16.000 RT.	NO MONUMENT SET

REGISTERED
PROFESSIONAL
LAND SURVEYOR

Curtis B. Stockhoff

OREGON
JULY 10, 1996
CURTIS B. STOCKHOFF
2765

EXPIRES: JUNE 30, 2010

TO CONVERT FROM METERS TO S. I. FEET, DIVIDE BY 0.3048

OREGON DEPARTMENT OF TRANSPORTATION
RIGHT-OF-WAY-BOUNDARY MONUMENTATION MAP
TOLLGATE SECTION
WESTON - ELGIN HIGHWAY
UMATILLA COUNTY

3-07
09-47-B

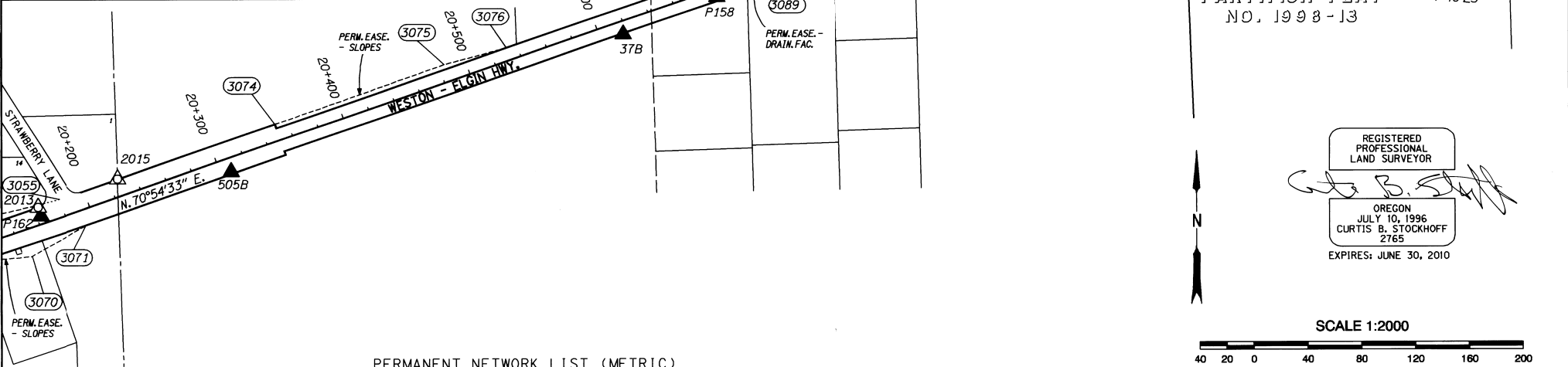
FOR ODOT REGION 5
3012 ISLAND AVENUE
LA GRANDE, OR 97850

OCTOBER 10, 2008
NO SCALE
KEY NO. 10267 SHEET 8 OF 21

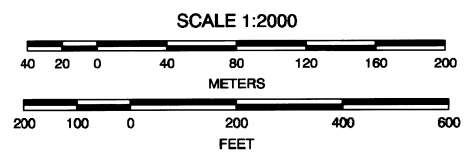
SW1/4 SEC. 28, S1/2 SEC. 29, T. 4 N., R. 37 E., W.M.

RIGHT OF WAY LOCATION TABLE (METRIC)

PT. NO.	LDP NORTHING	LDP EASTING	STATION	OFFSET	DESCRIPTION
3055	238 463.523	2 677 731.477	20+180.000	13.000 LT.	NO MONUMENT SET
3070	238 420.599	2 677 711.413	20+147.000	21.000 RT.	NO MONUMENT SET
3071	238 444.252	2 677 751.904	20+193.000	11.892 RT.	NO MONUMENT SET
3074	238 518.827	2 677 892.891	20+350.625	12.470 LT.	NO MONUMENT SET
3075	238 562.951	2 678 018.758	20+484.000	13.000 LT.	NO MONUMENT SET
3076	238 575.244	2 678 065.297	20+532.000	9.396 LT.	NO MONUMENT SET
3077	238 642.592	2 678 259.977	20+738.000	9.367 LT.	NO MONUMENT SET
3078	238 655.111	2 678 278.924	20+760.000	15.000 LT.	NO MONUMENT SET
3079	238 702.872	2 678 424.852	20+913.523	12.406 LT.	NO MONUMENT SET
3080	238 711.853	2 678 450.820	20+941.000	12.400 LT.	NO MONUMENT SET
3081	238 737.387	2 678 504.416	21+000.000	19.000 LT.	NO MONUMENT SET
3082	238 742.985	2 678 523.661	21+020.000	18.000 LT.	NO MONUMENT SET
3083	238 744.175	2 678 544.478	21+040.000	12.382 LT.	NO MONUMENT SET
3084	238 752.405	2 678 560.835	21+058.000	15.000 LT.	NO MONUMENT SET
3085	238 782.118	2 678 657.658	21+157.309	18.000 LT.	NO MONUMENT SET
3086	238 781.798	2 678 698.516	21+196.557	11.000 LT.	NO MONUMENT SET
3087	238 786.232	2 678 752.848	21+250.040	11.000 LT.	NO MONUMENT SET
3088	238 789.372	2 678 752.734	21+250.032	14.140 LT.	NO MONUMENT SET
3089	238 619.094	2 678 254.353	20+725.000	11.000 RT.	NO MONUMENT SET
3090	238 726.461	2 678 565.188	21+054.000	11.000 RT.	NO MONUMENT SET
3091	238 751.926	2 678 681.285	21+175.000	16.000 RT.	NO MONUMENT SET
3092	238 763.597	2 678 804.506	21+302.000	11.000 RT.	NO MONUMENT SET
3093	238 772.154	2 678 619.578	21+119.000	17.000 LT.	NO MONUMENT SET
3094	238 773.191	2 678 623.537	21+123.000	17.000 LT.	NO MONUMENT SET



REGISTERED PROFESSIONAL LAND SURVEYOR
 G. B. STOCKHOFF
 OREGON
 JULY 10, 1996
 CURTIS B. STOCKHOFF
 2765
 EXPIRES: JUNE 30, 2010



PERMANENT NETWORK LIST (METRIC)

PT. NO.	LDP NORTHING	LDP EASTING	STATION	OFFSET	DESCRIPTION
2015	238 478.297	2 677 775.362	20+226.303	12.609 LT.	FD. 5/8" REBAR; CS 01-85-C
505B	238 483.345	2 677 860.198	20+308.124	10.368 RT.	SET 5/8" IRON ROD W/ODOT ALUM. CAP
37B	238 584.989	2 678 152.343	20+617.446	9.865 RT.	FD. 5/8" IRON ROD W/ODOT ALUM. CAP; NOT OF RECORD
38	238 621.457	2 678 205.158	20+679.284	7.323 LT.	FD. 5/8" IRON ROD W/ODOT ALUM. CAP; CS 01-85-C
P158	238 613.053	2 678 221.887	20+692.345	6.090 RT.	SET 5/8" IRON ROD W/ODOT ALUM. CAP
61705	238 645.812	2 678 281.458	20+759.353	5.384 LT.	FD. RAILROAD SPIKE; CS 01-85-C
39	238 656.279	2 678 305.486	20+785.483	7.417 LT.	FD. 5/8" IRON ROD W/ODOT ALUM. CAP; CS 01-85-C
40	238 676.398	2 678 358.909	20+842.548	8.956 LT.	FD. 5/8" IRON ROD W/ODOT ALUM. CAP; CS 01-85-C
T83	238 686.962	2 678 445.142	20+927.493	9.265 RT.	SET 5/8" IRON ROD W/ODOT ALUM. CAP
P153	238 686.277	2 678 458.701	20+940.083	14.347 RT.	SET 5/8" IRON ROD W/ODOT ALUM. CAP
P156	238 748.247	2 678 563.839	21+059.544	10.112 LT.	SET 5/8" IRON ROD W/ODOT ALUM. CAP
P105	238 750.769	2 678 582.192	21+077.678	6.903 LT.	SET 5/8" IRON ROD W/ODOT ALUM. CAP
P157	238 781.953	2 678 762.634	21+259.567	6.476 LT.	SET 5/8" IRON ROD W/ODOT ALUM. CAP
T80	238 784.309	2 678 780.195	21+276.895	8.812 LT.	SET 5/8" IRON ROD W/ODOT ALUM. CAP
47	238 779.265	2 678 852.689	21+348.445	9.445 LT.	FD. 5/8" IRON ROD W/ODOT ALUM. CAP; CS 01-85-C

LEGEND

- ▲ FOUND MON. USED AS NETWORK POINT
- ▲ SET NETWORK POINT
- △ FOUND NETWORK POINT
- PROPERTY / RW LINE
- - - - EASEMENT LINE
- ⋯ FALSE CALL LINE
- RW POINT NO.

TO CONVERT FROM METERS TO S. I. FEET, DIVIDE BY 0.3048

OREGON DEPARTMENT OF TRANSPORTATION
 RIGHT-OF-WAY-BOUNDARY MONUMENTATION MAP
 TOLLGATE SECTION
 WESTON - ELGIN HIGHWAY
 UMATILLA COUNTY

FOR ODOT REGION 5
 3012 ISLAND AVENUE
 LA GRANDE, OR 97850

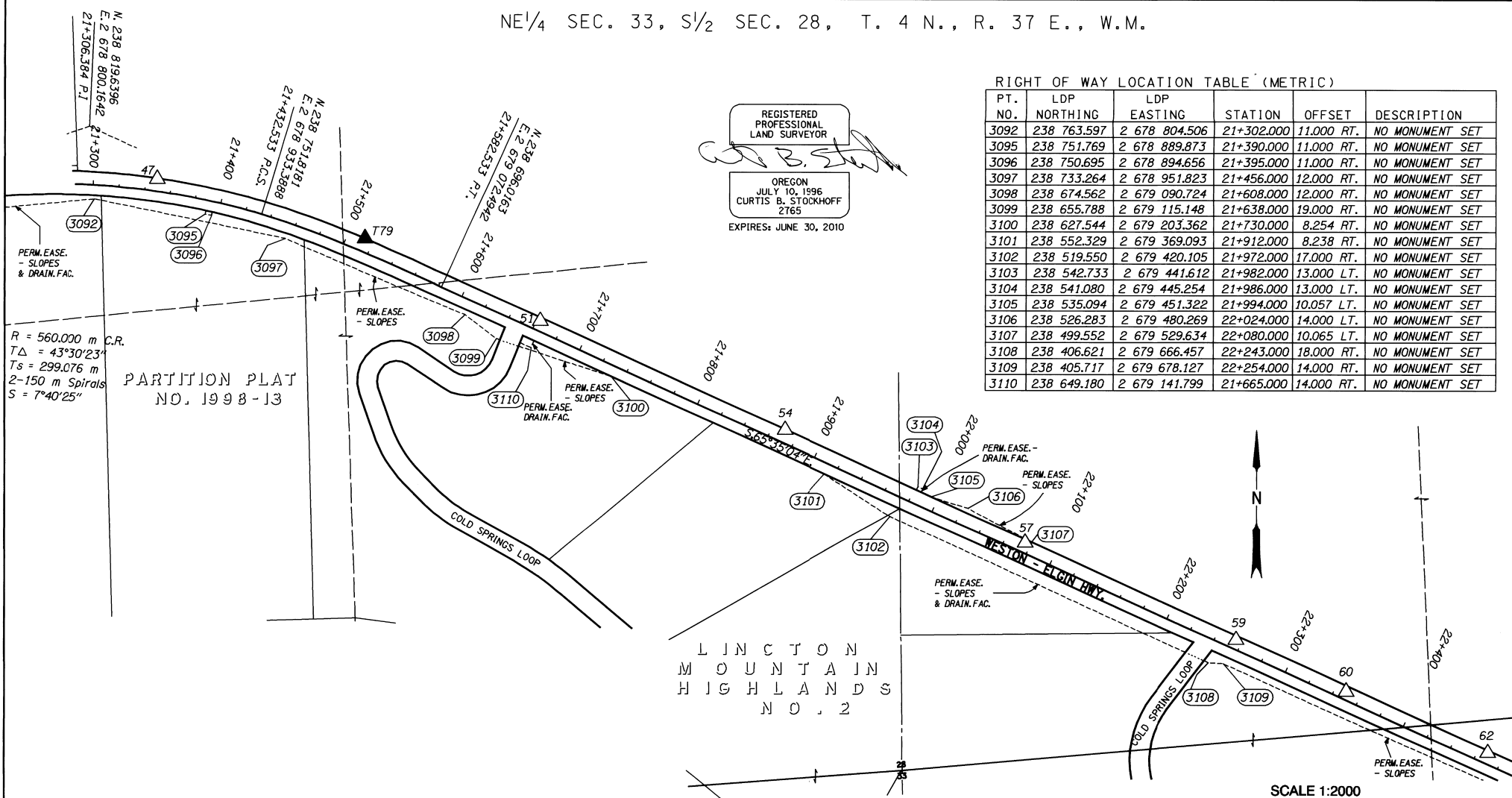
OCTOBER 10, 2008
 SCALE: 1mm = 2m
 KEY NO. 10267
 SHEET 9 OF 21

NE 1/4 SEC. 33, S 1/2 SEC. 28, T. 4 N., R. 37 E., W.M.

REGISTERED PROFESSIONAL LAND SURVEYOR
 CURTIS B. STOCKHOFF
 OREGON JULY 10, 1996
 CURTIS B. STOCKHOFF 2165
 EXPIRES: JUNE 30, 2010

RIGHT OF WAY LOCATION TABLE (METRIC)

PT. NO.	LDP NORTHING	LDP EASTING	STATION	OFFSET	DESCRIPTION
3092	238 763.597	2 678 804.506	21+302.000	11.000 RT.	NO MONUMENT SET
3095	238 751.769	2 678 889.873	21+390.000	11.000 RT.	NO MONUMENT SET
3096	238 750.695	2 678 894.656	21+395.000	11.000 RT.	NO MONUMENT SET
3097	238 733.264	2 678 951.823	21+456.000	12.000 RT.	NO MONUMENT SET
3098	238 674.562	2 679 090.724	21+608.000	12.000 RT.	NO MONUMENT SET
3099	238 655.788	2 679 115.148	21+638.000	19.000 RT.	NO MONUMENT SET
3100	238 627.544	2 679 203.362	21+730.000	8.254 RT.	NO MONUMENT SET
3101	238 552.329	2 679 369.093	21+912.000	8.238 RT.	NO MONUMENT SET
3102	238 519.550	2 679 420.105	21+972.000	17.000 RT.	NO MONUMENT SET
3103	238 542.733	2 679 441.612	21+982.000	13.000 LT.	NO MONUMENT SET
3104	238 541.080	2 679 445.254	21+986.000	13.000 LT.	NO MONUMENT SET
3105	238 535.094	2 679 451.322	21+994.000	10.057 LT.	NO MONUMENT SET
3106	238 526.283	2 679 480.269	22+024.000	14.000 LT.	NO MONUMENT SET
3107	238 499.552	2 679 529.634	22+080.000	10.065 LT.	NO MONUMENT SET
3108	238 406.621	2 679 666.457	22+243.000	18.000 RT.	NO MONUMENT SET
3109	238 405.717	2 679 678.127	22+254.000	14.000 RT.	NO MONUMENT SET
3110	238 649.180	2 679 141.799	21+665.000	14.000 RT.	NO MONUMENT SET



PERM. EASE. - SLOPES & DRAIN. FAC.
 R = 560.000 m C.R.
 TΔ = 43°30'23"
 Ts = 299.076 m
 2-150 m Spirals
 S = 7°40'25"
 PARTITION PLAT NO. 1998-13

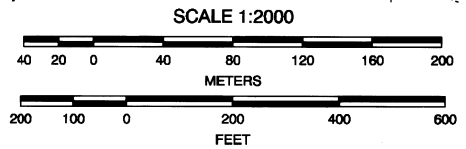
L I N C T O N
 M O U N T A I N
 H I G H L A N D S
 N O . 2

PERMANENT NETWORK LIST (METRIC)

PT. NO.	LDP NORTHING	LDP EASTING	STATION	OFFSET	DESCRIPTION
T80	238 784.309	2 678 780.195	21+276.895	8.812 LT.	FD. 5/8" IRON ROD W/PLASTIC CAP; NOT OF RECORD
47	238 779.265	2 678 852.689	21+348.445	9.445 LT.	FD. 5/8" IRON ROD W/ODOT ALUM. CAP; CS 01-85-C
T79	238 733.159	2 679 013.402	21+513.650	10.048 LT.	FD. 5/8" IRON ROD W/PLASTIC CAP; NOT OF RECORD
51	238 669.604	2 679 148.983	21+663.099	7.567 LT.	FD. 5/8" IRON ROD W/ODOT ALUM. CAP; CS 01-85-C
54	238 585.883	2 679 338.170	21+869.973	9.533 LT.	FD. 5/8" IRON ROD W/ODOT ALUM. CAP; CS 01-85-C
57	238 499.092	2 679 524.706	22+075.702	7.609 LT.	FD. 5/8" IRON ROD W/ODOT ALUM. CAP; CS 01-85-C
59	238 424.230	2 679 687.899	22+255.246	6.897 LT.	FD. 5/8" IRON ROD W/ODOT ALUM. CAP; CS 01-85-C
60	238 384.606	2 679 772.708	22+348.849	5.872 LT.	FD. 5/8" IRON ROD W/ODOT ALUM. CAP; CS 01-85-C
62	238 337.415	2 679 882.249	22+468.101	8.181 LT.	FD. 5/8" IRON ROD W/ODOT ALUM. CAP; CS 01-85-C

LEGEND

- ▲ FOUND MON. USED AS NETWORK POINT
- ▲ SET NETWORK POINT
- △ FOUND NETWORK POINT
- PROPERTY / RW LINE
- - - - EASEMENT LINE
- FALSE CALL LINE
- RW POINT NO.



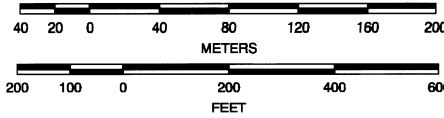
TO CONVERT FROM METERS TO S. I. FEET, DIVIDE BY 0.3048

METRIC OREGON DEPARTMENT OF TRANSPORTATION
 RIGHT-OF-WAY-BOUNDARY MONUMENTATION MAP
 TOLLGATE SECTION
 WESTON - ELGIN HIGHWAY
 UMATILLA COUNTY

RECEIVED BY
 Umatilla County Surveyors
 3-09
 FOR ODOT REGION 5
 3012 ISLAND AVENUE
 LA GRANDE, OR 97850
 OCTOBER 10, 2008
 SCALE: 1mm = 2m
 KEY NO. 10267
 SHEET 10 OF 21
 I:1000.CL - 027

NE 1/4 SEC. 33, NW 1/2 SEC. 34, T. 4 N., R. 37 E., W.M.

SCALE 1:2000



RIGHT OF WAY POINT LOCATION TABLE (METRIC)

PT. NO.	LDP NORTHING	LDP EASTING	STATION	OFFSET	DESCRIPTION
3111	238 277.332	2 679 965.783	22+569.000	12.000 RT.	NO MONUMENT SET
3112	238 135.133	2 680 266.937	22+902.000	17.000 RT.	NO MONUMENT SET
3113	238 120.588	2 680 308.656	22+946.000	13.000 RT.	NO MONUMENT SET
3114	238 113.316	2 680 329.515	22+968.000	11.000 RT.	NO MONUMENT SET
3115	238 020.719	2 680 521.400	23+181.000	16.000 RT.	NO MONUMENT SET
3116	238 019.149	2 680 527.277	23+187.000	15.000 RT.	NO MONUMENT SET
3117	238 016.669	2 680 532.740	23+193.000	15.000 RT.	NO MONUMENT SET
3118	238 048.036	2 680 533.800	23+181.000	14.000 LT.	NO MONUMENT SET
3119	238 046.383	2 680 537.443	23+185.000	14.000 LT.	NO MONUMENT SET
3120	238 045.143	2 680 540.174	23+188.000	14.000 LT.	NO MONUMENT SET
3121	238 043.489	2 680 543.817	23+192.000	14.000 LT.	NO MONUMENT SET
3122	237 859.931	2 680 887.695	23+581.000	11.000 RT.	NO MONUMENT SET
3123	237 834.789	2 680 921.309	23+622.000	20.000 RT.	NO MONUMENT SET

LINCTON MOUNTAIN HIGHLANDS NO. 2

LEGEND	
	FOUND MON. USED AS NETWORK POINT
	SET NETWORK POINT
	FOUND NETWORK POINT
	PROPERTY / RW LINE
	EASEMENT LINE
	FALSE CALL LINE
	RW POINT NO.

PERMANENT NETWORK LIST (METRIC)

PT. NO.	LDP NORTHING	LDP EASTING	STATION	OFFSET	DESCRIPTION
62	238 337.415	2 679 882.249	22+468.101	8.181 LT.	* FD. 5/8" IRON ROD W/ODOT ALUM.CAP;CS 01-85-C
64	238 293.210	2 679 976.863	22+572.525	7.037 LT.	* FD. 5/8" IRON ROD W/ODOT ALUM.CAP;CS 01-85-C
67	238 208.861	2 680 162.728	22+776.635	7.059 LT.	* FD. 5/8" IRON ROD W/ODOT ALUM.CAP;CS 01-85-C
508	238 157.293	2 680 334.714	22+954.556	31.194 LT.	* FD. 5/8" IRON ROD W/ODOT ALUM.CAP;CS 01-85-C
71	238 101.324	2 680 402.177	23+039.120	8.116 LT.	* FD. 5/8" IRON ROD W/ODOT ALUM.CAP;CS 01-85-C
72	238 074.951	2 680 461.288	23+103.849	8.535 LT.	* FD. 5/8" IRON ROD W/ODOT ALUM.CAP;CS 01-85-C
C102	237 980.963	2 680 631.505	23+297.692	6.689 RT.	SET 5/8" IRON ROD W/ODOT ALUM.CAP
P147	237 953.223	2 680 686.669	23+359.388	9.146 RT.	SET 5/8" IRON ROD W/ODOT ALUM.CAP
75013	237 958.382	2 680 721.056	23+388.568	9.766 LT.	* FD. BRASS CAP SET IN CONCRETE;CS 01-85-C
76	237 944.865	2 680 744.599	23+415.593	7.189 LT.	* FD. 5/8" IRON ROD W/ODOT ALUM.CAP;CS 01-85-C
P150	237 860.073	2 680 891.888	23+584.759	9.138 RT.	SET 5/8" IRON ROD W/ODOT ALUM.CAP
80	237 853.851	2 680 945.986	23+636.592	7.558 LT.	* FD. 5/8" IRON ROD W/ODOT ALUM.CAP;CS 01-85-C

REGISTERED PROFESSIONAL LAND SURVEYOR

OREGON JULY 10, 1996 CURTIS B. STOCKHOFF 2765 EXPIRES: JUNE 30, 2010

TO CONVERT FROM METERS TO S. I. FEET, DIVIDE BY 0.3048

OREGON DEPARTMENT OF TRANSPORTATION
 RIGHT-OF-WAY-BOUNDARY MONUMENTATION MAP
 TOLLGATE SECTION
 WESTON - ELGIN HIGHWAY
 UMATILLA COUNTY

FOR ODOT REGION 5
 3012 ISLAND AVENUE
 LA GRANDE, OR 97850

OCTOBER 10, 2008
 SCALE: 1mm = 2m
 KEY NO. 10267 SHEET 11 OF 21

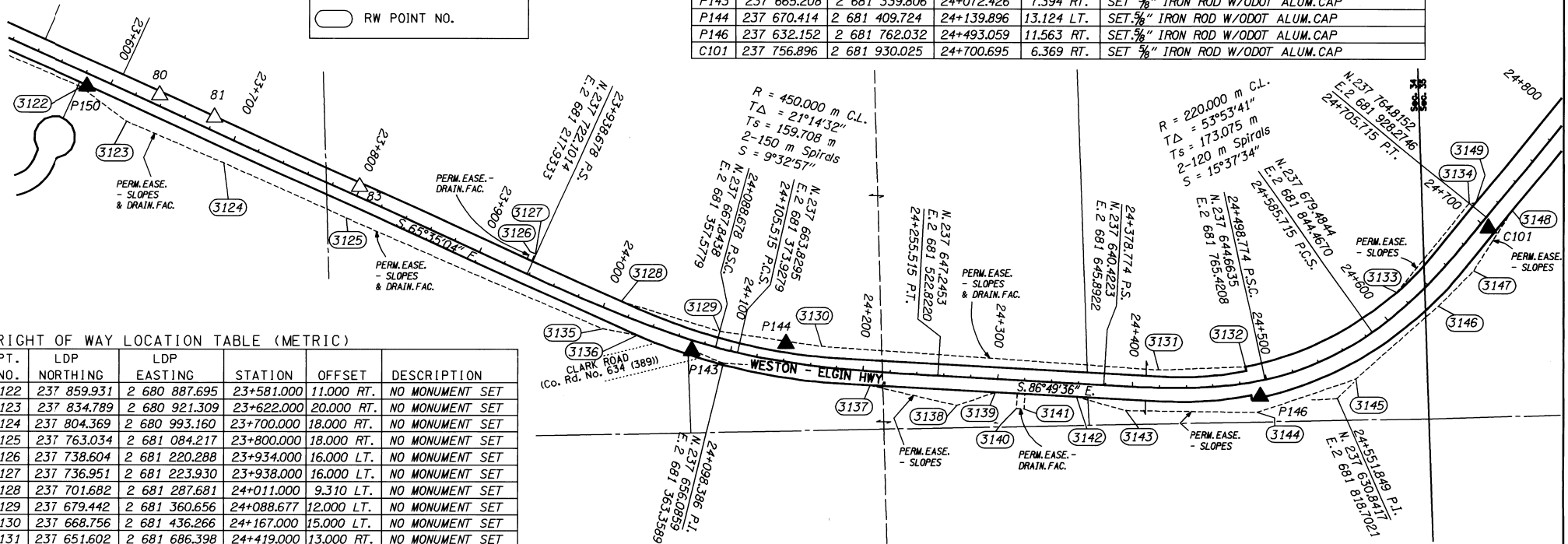
3-07
 07-47-B

N 1/2 SEC. 34, NW 1/4 SEC. 35, T. 4 N., R. 37 E., W.M.

PERMANENT NETWORK LIST (METRIC)

PT. NO.	LDP NORTHING	LDP EASTING	STATION	OFFSET	DESCRIPTION
P150	237 860.073	2 680 891.888	23+584.759	9.138 RT.	SET 5/8" IRON ROD W/ODOT ALUM.CAP
80	237 853.851	2 680 945.986	23+636.592	7.558 LT.	FD. 5/8" IRON ROD W/ODOT ALUM.CAP; CS 01-85-C
81	237 837.602	2 680 986.657	23+680.341	9.573 LT.	FD. 5/8" IRON ROD W/ODOT ALUM.CAP; CS 01-85-C
83	237 786.235	2 681 093.799	23+799.134	7.087 LT.	FD. 5/8" IRON ROD W/ODOT ALUM.CAP; CS 01-85-C
P143	237 665.208	2 681 339.806	24+072.426	7.394 RT.	SET 5/8" IRON ROD W/ODOT ALUM.CAP
P150	237 860.073	2 680 891.888	23+584.759	9.138 RT.	SET 5/8" IRON ROD W/ODOT ALUM.CAP
80	237 853.851	2 680 945.986	23+636.592	7.558 LT.	FD. 5/8" IRON ROD W/ODOT ALUM.CAP; CS 01-85-C
81	237 837.602	2 680 986.657	23+680.341	9.573 LT.	FD. 5/8" IRON ROD W/ODOT ALUM.CAP; CS 01-85-C
83	237 786.235	2 681 093.799	23+799.134	7.087 LT.	FD. 5/8" IRON ROD W/ODOT ALUM.CAP; CS 01-85-C
P143	237 665.208	2 681 339.806	24+072.426	7.394 RT.	SET 5/8" IRON ROD W/ODOT ALUM.CAP
P144	237 670.414	2 681 409.724	24+139.896	13.124 LT.	SET 5/8" IRON ROD W/ODOT ALUM.CAP
P146	237 632.152	2 681 762.032	24+493.059	11.563 RT.	SET 5/8" IRON ROD W/ODOT ALUM.CAP
C101	237 756.896	2 681 930.025	24+700.695	6.369 RT.	SET 5/8" IRON ROD W/ODOT ALUM.CAP

LEGEND	
	FOUND MON. USED AS NETWORK POINT
	SET NETWORK POINT
	FOUND NETWORK POINT
	PROPERTY / RW LINE
	EASEMENT LINE
	RW POINT NO.

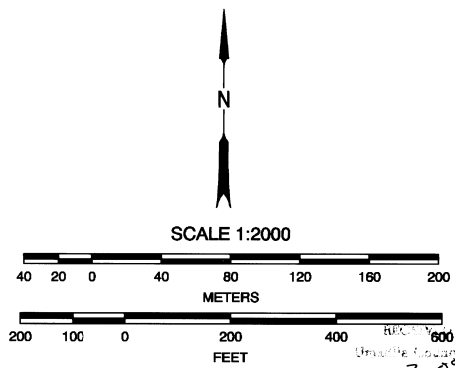


RIGHT OF WAY LOCATION TABLE (METRIC)

PT. NO.	LDP NORTHING	LDP EASTING	STATION	OFFSET	DESCRIPTION
3122	237 859.931	2 680 887.695	23+581.000	11.000 RT.	NO MONUMENT SET
3123	237 834.789	2 680 921.309	23+622.000	20.000 RT.	NO MONUMENT SET
3124	237 804.369	2 680 993.160	23+700.000	18.000 RT.	NO MONUMENT SET
3125	237 763.034	2 681 084.217	23+800.000	18.000 RT.	NO MONUMENT SET
3126	237 738.604	2 681 220.288	23+934.000	16.000 LT.	NO MONUMENT SET
3127	237 736.951	2 681 223.930	23+938.000	16.000 LT.	NO MONUMENT SET
3128	237 701.682	2 681 287.681	24+011.000	9.310 LT.	NO MONUMENT SET
3129	237 679.442	2 681 360.656	24+088.677	12.000 LT.	NO MONUMENT SET
3130	237 668.756	2 681 436.266	24+167.000	15.000 LT.	NO MONUMENT SET
3131	237 651.602	2 681 686.398	24+419.000	13.000 RT.	NO MONUMENT SET
3132	237 653.974	2 681 751.020	24+486.064	11.861 LT.	NO MONUMENT SET
3133	237 709.164	2 681 862.286	24+619.000	11.857 LT.	NO MONUMENT SET
3134	237 774.945	2 681 915.890	24+705.715	16.000 LT.	NO MONUMENT SET
3135	237 681.104	2 681 273.802	24+006.000	15.000 RT.	NO MONUMENT SET
3136	237 676.521	2 681 299.273	24+031.000	9.845 RT.	NO MONUMENT SET
3137	237 640.060	2 681 472.649	24+206.000	10.253 RT.	NO MONUMENT SET
3138	237 625.420	2 681 537.122	24+271.000	21.000 RT.	NO MONUMENT SET
3139	237 635.105	2 681 565.702	24+299.000	9.748 RT.	NO MONUMENT SET
3140	237 622.985	2 681 581.054	24+315.000	21.000 RT.	NO MONUMENT SET
3141	237 622.653	2 681 587.045	24+321.000	21.000 RT.	NO MONUMENT SET
3142	237 631.915	2 681 625.617	24+359.000	9.617 RT.	NO MONUMENT SET
3143	237 621.523	2 681 662.199	24+396.000	18.000 RT.	NO MONUMENT SET
3144	237 620.113	2 681 759.833	24+489.000	23.000 RT.	NO MONUMENT SET
3145	237 645.207	2 681 832.579	24+559.000	23.000 RT.	NO MONUMENT SET
3146	237 698.838	2 681 893.165	24+634.000	17.000 RT.	NO MONUMENT SET
3147	237 725.625	2 681 919.097	24+670.000	18.000 RT.	NO MONUMENT SET
3148	237 770.072	2 681 947.573	24+722.000	11.611 RT.	NO MONUMENT SET
3149	237 775.448	2 681 920.465	24+709.000	12.776 LT.	NO MONUMENT SET

REGISTERED PROFESSIONAL LAND SURVEYOR

 OREGON
 JULY 10, 1996
 CURTIS B. STOCKHOFF
 2765
 EXPIRES: JUNE 30, 2010



TO CONVERT FROM METERS TO S. I. FEET, DIVIDE BY 0.3048

METRIC OREGON DEPARTMENT OF TRANSPORTATION
 RIGHT-OF-WAY-BOUNDARY MONUMENTATION MAP
 TOLLGATE SECTION
 WESTON - ELGIN HIGHWAY
 UMATILLA COUNTY

FOR ODOT REGION 5
 3012 ISLAND AVENUE
 LA GRANDE, OR 97850
 KEY NO. 10267

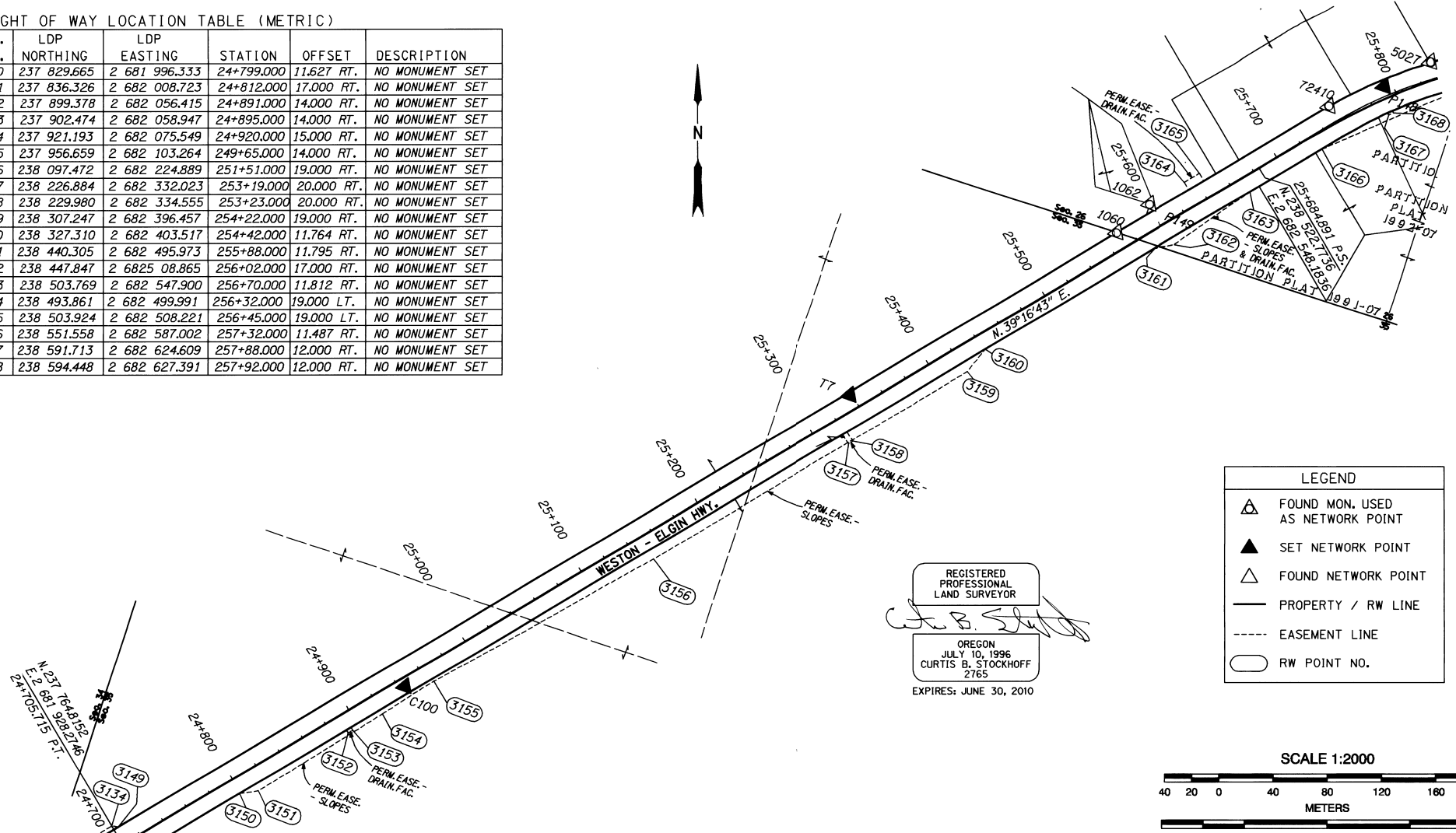
OCTOBER 10, 2008
 SCALE: 1mm = 2m
 SHEET 12 OF 21

3-07
 KK
 09-47-B

SW 1/4 SEC 26, NW 1/4 SEC 35, T 4 N, R 37 E, WM

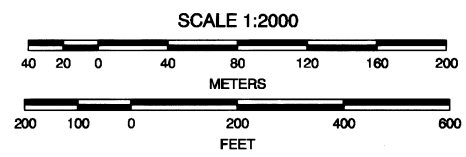
RIGHT OF WAY LOCATION TABLE (METRIC)

PT. NO.	LDP NORTHING	LDP EASTING	STATION	OFFSET	DESCRIPTION
3150	237 829.665	2 681 996.333	24+799.000	11.627 RT.	NO MONUMENT SET
3151	237 836.326	2 682 008.723	24+812.000	17.000 RT.	NO MONUMENT SET
3152	237 899.378	2 682 056.415	24+891.000	14.000 RT.	NO MONUMENT SET
3153	237 902.474	2 682 058.947	24+895.000	14.000 RT.	NO MONUMENT SET
3154	237 921.193	2 682 075.549	24+920.000	15.000 RT.	NO MONUMENT SET
3155	237 956.659	2 682 103.264	249+65.000	14.000 RT.	NO MONUMENT SET
3156	238 097.472	2 682 224.889	251+51.000	19.000 RT.	NO MONUMENT SET
3157	238 226.884	2 682 332.023	253+19.000	20.000 RT.	NO MONUMENT SET
3158	238 229.980	2 682 334.555	253+23.000	20.000 RT.	NO MONUMENT SET
3159	238 307.247	2 682 396.457	254+22.000	19.000 RT.	NO MONUMENT SET
3160	238 327.310	2 682 403.517	254+42.000	11.764 RT.	NO MONUMENT SET
3161	238 440.305	2 682 495.973	255+88.000	11.795 RT.	NO MONUMENT SET
3162	238 447.847	2 6825 08.865	256+02.000	17.000 RT.	NO MONUMENT SET
3163	238 503.769	2 682 547.900	256+70.000	11.812 RT.	NO MONUMENT SET
3164	238 493.861	2 682 499.991	256+32.000	19.000 LT.	NO MONUMENT SET
3165	238 503.924	2 682 508.221	256+45.000	19.000 LT.	NO MONUMENT SET
3166	238 551.558	2 682 587.002	257+32.000	11.487 RT.	NO MONUMENT SET
3167	238 591.713	2 682 624.609	257+88.000	12.000 RT.	NO MONUMENT SET
3168	238 594.448	2 682 627.391	257+92.000	12.000 RT.	NO MONUMENT SET



LEGEND

- ▲ FOUND MON. USED AS NETWORK POINT
- ▲ SET NETWORK POINT
- △ FOUND NETWORK POINT
- PROPERTY / RW LINE
- - - - EASEMENT LINE
- RW POINT NO.



PERMANENT NETWORK LIST (METRIC)

PT. NO.	LDP NORTHING	LDP EASTING	STATION	OFFSET	DESCRIPTION
C100	237 945.763	2 682 084.169	24+944.477	6.118 RT.	SET 5/8" IRON ROD W/ODOT ALUM. CAP
T7	238 261.437	2 682 320.593	25+338.511	10.723 LT.	FD. IRON ROD W/YELLOW PLASTIC CAP; CS 01-85-C
1060	238 441.558	2 682 465.512	25+569.685	12.578 LT.	FD. 5/8" IRON ROD; CS 01-85-C
1062	238 469.850	2 682 481.193	25+601.513	18.351 LT.	FD. 5/8" IRON ROD; CS 01-85-C
1063	238 469.960	2 682 484.761	25+603.857	15.658 LT.	FD. 5/8" IRON ROD; CS 01-85-C
P149	238 464.736	2 682 489.644	25+602.904	8.571 LT.	SET 5/8" IRON ROD W/ODOT ALUM. CAP
1064	238 507.836	2 682 519.710	25+655.302	12.584 LT.	FD. 5/8" IRON ROD; CS 01-85-C
72410	238 582.846	2 682 581.123	25+751.667	13.520 LT.	FD. BRASS CAP; CS 01-85-C
P148	238 610.808	2 682 614.082	25+793.857	9.009 LT.	SET 5/8" IRON ROD W/ODOT ALUM. CAP
5027	238 639.953	2 682 639.843	25+831.394	13.782 LT.	FD. 5/8" IRON ROD W/PLASTIC CAP; CS 92-87-B

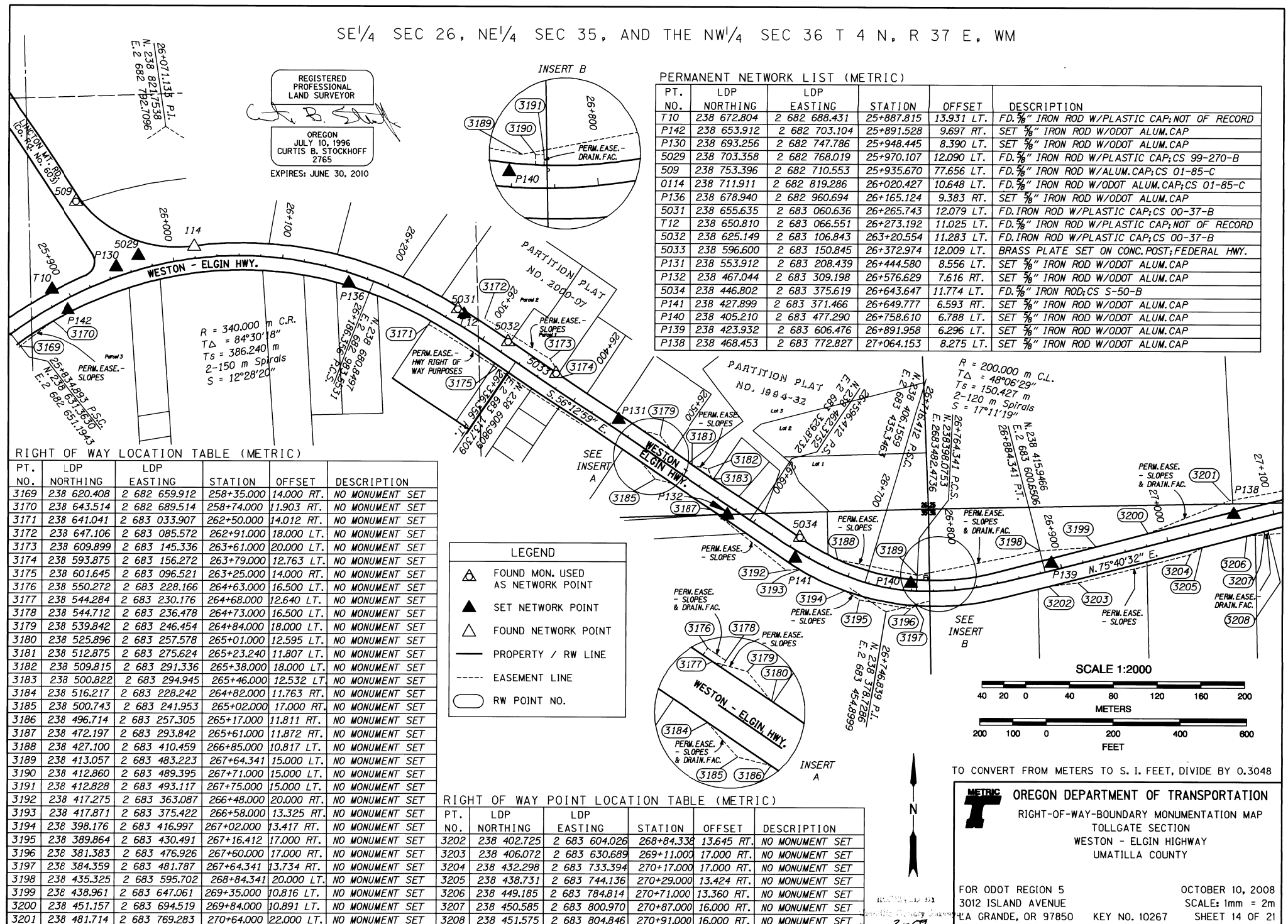
TO CONVERT FROM METERS TO S. I. FEET, DIVIDE BY 0.3048

OREGON DEPARTMENT OF TRANSPORTATION
 RIGHT-OF-WAY-BOUNDARY MONUMENTATION MAP
 TOLLGATE SECTION
 WESTON - ELGIN HIGHWAY
 UMATILLA COUNTY

FOR ODOT REGION 5
 3012 ISLAND AVENUE
 LA GRANDE, OR 97850

OCTOBER 10, 2008
 SCALE: 1mm = 2m
 KEY NO. 10267 SHEET 13 OF 21

SE 1/4 SEC 26, NE 1/4 SEC 35, AND THE NW 1/4 SEC 36 T 4 N, R 37 E, WM



REGISTERED PROFESSIONAL LAND SURVEYOR
 OREGON
 JULY 10, 1996
 CURTIS B. STOCKHOFF
 2765
 EXPIRES: JUNE 30, 2010

PERMANENT NETWORK LIST (METRIC)

PT. NO.	LDP NORTHING	LDP EASTING	STATION	OFFSET	DESCRIPTION
T10	238 672.804	2 682 688.431	25+887.815	13.931 LT.	FD. 3/8" IRON ROD W/PLASTIC CAP; NOT OF RECORD
P142	238 653.912	2 682 703.104	25+891.528	9.697 RT.	SET 3/8" IRON ROD W/ODOT ALUM. CAP
P130	238 693.256	2 682 747.786	25+948.445	8.390 LT.	SET 3/8" IRON ROD W/ODOT ALUM. CAP
5029	238 703.358	2 682 768.019	25+970.107	12.090 LT.	FD. 3/8" IRON ROD W/PLASTIC CAP; CS 99-270-B
509	238 753.396	2 682 710.553	25+935.670	77.656 LT.	FD. 3/8" IRON ROD W/ALUM. CAP; CS 01-85-C
0114	238 711.911	2 682 819.286	26+020.427	10.648 LT.	FD. 3/8" IRON ROD W/ODOT ALUM. CAP; CS 01-85-C
P136	238 678.940	2 682 960.694	26+165.124	9.383 RT.	SET 3/8" IRON ROD W/ODOT ALUM. CAP
5031	238 655.635	2 683 060.636	26+265.743	12.079 LT.	FD. IRON ROD W/PLASTIC CAP; CS 00-37-B
T12	238 650.810	2 683 066.551	26+273.192	11.025 LT.	FD. 3/8" IRON ROD W/PLASTIC CAP; NOT OF RECORD
5032	238 625.149	2 683 106.843	263+20.554	11.283 LT.	FD. IRON ROD W/PLASTIC CAP; CS 00-37-B
5033	238 596.600	2 683 150.845	26+372.974	12.009 LT.	BRASS PLATE SET ON CONC. POST; FEDERAL HWY.
P131	238 553.912	2 683 208.439	26+444.580	8.556 LT.	SET 3/8" IRON ROD W/ODOT ALUM. CAP
P132	238 467.044	2 683 309.198	26+576.629	7.616 RT.	SET 3/8" IRON ROD W/ODOT ALUM. CAP
5034	238 446.802	2 683 375.619	26+643.647	11.774 LT.	FD. 3/8" IRON ROD; CS S-50-B
P141	238 427.899	2 683 371.466	26+649.777	6.593 RT.	SET 3/8" IRON ROD W/ODOT ALUM. CAP
P140	238 405.210	2 683 477.290	26+758.610	6.788 LT.	SET 3/8" IRON ROD W/ODOT ALUM. CAP
P139	238 423.932	2 683 606.476	26+891.958	6.296 LT.	SET 3/8" IRON ROD W/ODOT ALUM. CAP
P138	238 468.453	2 683 772.827	27+064.153	8.275 LT.	SET 3/8" IRON ROD W/ODOT ALUM. CAP

RIGHT OF WAY LOCATION TABLE (METRIC)

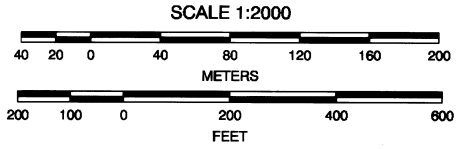
PT. NO.	LDP NORTHING	LDP EASTING	STATION	OFFSET	DESCRIPTION
3169	238 620.408	2 682 659.912	258+35.000	14.000 RT.	NO MONUMENT SET
3170	238 643.514	2 682 689.514	258+74.000	11.903 RT.	NO MONUMENT SET
3171	238 641.041	2 683 033.907	262+50.000	14.012 RT.	NO MONUMENT SET
3172	238 647.106	2 683 085.572	262+91.000	18.000 LT.	NO MONUMENT SET
3173	238 609.899	2 683 145.336	263+61.000	20.000 LT.	NO MONUMENT SET
3174	238 593.875	2 683 156.272	263+79.000	12.763 LT.	NO MONUMENT SET
3175	238 601.645	2 683 096.521	263+25.000	14.000 RT.	NO MONUMENT SET
3176	238 550.272	2 683 228.166	264+63.000	16.500 LT.	NO MONUMENT SET
3177	238 544.284	2 683 230.176	264+68.000	12.640 LT.	NO MONUMENT SET
3178	238 544.712	2 683 236.478	264+73.000	16.500 LT.	NO MONUMENT SET
3179	238 539.842	2 683 246.454	264+84.000	18.000 LT.	NO MONUMENT SET
3180	238 525.896	2 683 257.578	265+01.000	12.595 LT.	NO MONUMENT SET
3181	238 512.875	2 683 275.624	265+23.240	11.807 LT.	NO MONUMENT SET
3182	238 509.815	2 683 291.336	265+38.000	18.000 LT.	NO MONUMENT SET
3183	238 500.822	2 683 294.945	265+46.000	12.532 LT.	NO MONUMENT SET
3184	238 516.217	2 683 228.242	264+82.000	11.763 RT.	NO MONUMENT SET
3185	238 500.743	2 683 241.953	265+02.000	17.000 RT.	NO MONUMENT SET
3186	238 496.714	2 683 257.305	265+17.000	11.811 RT.	NO MONUMENT SET
3187	238 472.197	2 683 293.842	265+61.000	11.872 RT.	NO MONUMENT SET
3188	238 427.100	2 683 410.459	266+85.000	10.817 LT.	NO MONUMENT SET
3189	238 413.057	2 683 483.223	267+64.341	15.000 LT.	NO MONUMENT SET
3190	238 412.860	2 683 489.395	267+71.000	15.000 LT.	NO MONUMENT SET
3191	238 412.828	2 683 493.117	267+75.000	15.000 LT.	NO MONUMENT SET
3192	238 417.275	2 683 363.087	266+48.000	20.000 RT.	NO MONUMENT SET
3193	238 417.871	2 683 375.422	266+58.000	13.325 RT.	NO MONUMENT SET
3194	238 398.176	2 683 416.997	267+02.000	13.417 RT.	NO MONUMENT SET
3195	238 389.864	2 683 430.491	267+16.412	17.000 RT.	NO MONUMENT SET
3196	238 381.383	2 683 476.926	267+60.000	17.000 RT.	NO MONUMENT SET
3197	238 384.359	2 683 481.787	267+64.341	13.734 RT.	NO MONUMENT SET
3198	238 435.325	2 683 595.702	268+84.341	20.000 LT.	NO MONUMENT SET
3199	238 438.961	2 683 647.061	269+35.000	10.816 LT.	NO MONUMENT SET
3200	238 451.157	2 683 694.519	269+84.000	10.891 LT.	NO MONUMENT SET
3201	238 481.714	2 683 769.283	270+64.000	22.000 LT.	NO MONUMENT SET

LEGEND

- ▲ FOUND MON. USED AS NETWORK POINT
- ▲ SET NETWORK POINT
- △ FOUND NETWORK POINT
- PROPERTY / RW LINE
- - - - EASEMENT LINE
- RW POINT NO.

RIGHT OF WAY POINT LOCATION TABLE (METRIC)

PT. NO.	LDP NORTHING	LDP EASTING	STATION	OFFSET	DESCRIPTION
3202	238 402.725	2 683 604.026	268+84.338	13.645 RT.	NO MONUMENT SET
3203	238 406.072	2 683 630.689	269+11.000	17.000 RT.	NO MONUMENT SET
3204	238 432.298	2 683 733.394	270+17.000	17.000 RT.	NO MONUMENT SET
3205	238 438.731	2 683 744.136	270+29.000	13.424 RT.	NO MONUMENT SET
3206	238 449.185	2 683 784.814	270+71.000	13.360 RT.	NO MONUMENT SET
3207	238 450.585	2 683 800.970	270+87.000	16.000 RT.	NO MONUMENT SET
3208	238 451.575	2 683 804.846	270+91.000	16.000 RT.	NO MONUMENT SET



TO CONVERT FROM METERS TO S. I. FEET, DIVIDE BY 0.3048

METRIC OREGON DEPARTMENT OF TRANSPORTATION
 RIGHT-OF-WAY-BOUNDARY MONUMENTATION MAP
 TOLLGATE SECTION
 WESTON - ELGIN HIGHWAY
 UMATILLA COUNTY

FOR ODOT REGION 5
 3012 IANAL AVENUE
 LA GRANDE, OR 97850

OCTOBER 10, 2008
 SCALE: 1mm = 2m
 KEY NO. 10267 SHEET 14 OF 21

S. 1/2 SEC. 25, N. 1/2 SEC. 36, T. 4 N., R. 37 E., W.M.

PERMANENT NETWORK LIST (METRIC)

PT. NO.	LDP NORTHING	LDP EASTING	STATION	OFFSET	DESCRIPTION
P138	238 468.453	2 683 772.827	27+064.153	8.275 LT.	SET 5/8" IRON ROD W/ODOT ALUM.CAP
T18	238 500.609	2 683 871.670	27+167.879	14.977 LT.	** FD. 5/8" IRON ROD W/PLASTIC CAP
O450	238 480.957	2 683 891.084	27+181.826	8.868 RT.	* SET 5/8" IRON ROD W/ODOT ALUM.CAP
90428	238 481.377	2 683 910.127	27+200.382	13.173 RT.	* FD. 5/8" IRON ROD
P128	238 518.105	2 683 957.336	27+255.210	10.733 LT.	SET 5/8" IRON ROD W/ODOT ALUM.CAP
T19	238 530.559	2 684 002.976	27+302.513	11.508 LT.	** FD. 5/8" IRON ROD W/PLASTIC CAP
O456	238 538.142	2 684 032.678	27+333.166	11.506 LT.	* FD. 5/8" IRON ROD W/ODOT ALUM.CAP
T20	238 544.419	2 684 150.105	27+448.496	11.464 RT.	** FD. 5/8" IRON ROD W/PLASTIC CAP
O454	238 582.049	2 684 317.325	27+619.152	9.725 LT.	* FD. 5/8" IRON ROD W/ODOT ALUM.CAP
O455	238 574.410	2 684 354.886	27+656.085	12.275 LT.	* FD. 5/8" IRON ROD W/ODOT ALUM.CAP
T21	238 528.968	2 684 398.654	27+713.359	13.812 RT.	** FD. 5/8" IRON ROD W/PLASTIC CAP
P135	238 510.090	2 684 521.705	27+836.797	8.653 LT.	SET 5/8" IRON ROD W/ODOT ALUM.CAP
P129	238 493.191	2 684 575.754	27+891.047	8.429 RT.	SET 5/8" IRON ROD W/ODOT ALUM.CAP
O457	238 454.393	2 684 558.949	27+873.141	45.483 RT.	* FD. 5/8" IRON ROD W/ODOT ALUM.CAP
O459	238 464.273	2 684 595.820	27+904.037	40.448 RT.	* FD. 5/8" IRON ROD W/ODOT ALUM.CAP
O460	238 487.343	2 684 628.974	27+936.659	28.050 RT.	* FD. 5/8" IRON ROD W/ODOT ALUM.CAP
P134	238 636.656	2 684 762.332	28+127.704	7.910 LT.	SET 5/8" IRON ROD W/ODOT ALUM.CAP
P133	238 708.401	2 684 854.516	28+243.691	4.763 RT.	SET 5/8" IRON ROD W/ODOT ALUM.CAP
T25	238 789.420	2 684 888.347	28+331.133	13.174 LT.	** FD. 5/8" IRON ROD W/PLASTIC CAP

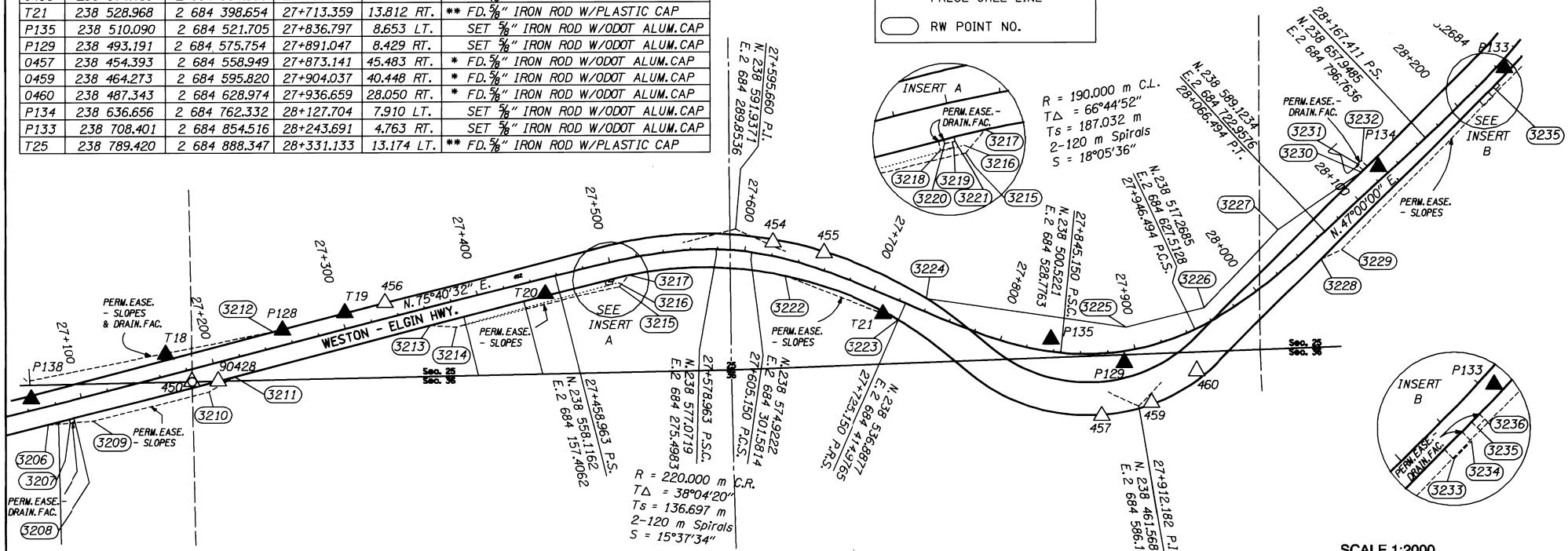
* CS 01-85-C
** NOT OF RECORD

LEGEND

- ▲ FOUND MON. USED AS NETWORK POINT
- ▲ SET NETWORK POINT
- △ FOUND NETWORK POINT
- PROPERTY / RW LINE
- EASEMENT LINE
- FALSE CALL LINE
- RW POINT NO.

REGISTERED PROFESSIONAL LAND SURVEYOR

 OREGON
 JULY 10, 1996
 CURTIS B. STOCKHOFF
 2765
 EXPIRES: JUNE 30, 2010



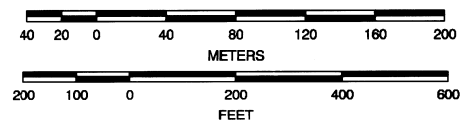
RIGHT OF WAY LOCATION TABLE (METRIC)

PT. NO.	LDP NORTHING	LDP EASTING	STATION	OFFSET	DESCRIPTION
3206	238 449.185	2 683 784.814	27+071.000	13.360 RT.	NO MONUMENT SET
3207	238 450.585	2 683 800.970	27+087.000	16.000 RT.	NO MONUMENT SET
3208	238 451.575	2 683 804.846	27+091.000	16.000 RT.	NO MONUMENT SET
3209	238 451.885	2 683 818.184	27+104.000	19.000 RT.	NO MONUMENT SET
3210	238 473.657	2 683 903.448	27+192.000	19.000 RT.	NO MONUMENT SET
3211	238 484.528	2 683 922.346	27+213.000	13.143 RT.	NO MONUMENT SET
3212	238 516.865	2 683 950.211	27+248.000	11.294 LT.	NO MONUMENT SET
3213	238 521.364	2 684 065.688	27+361.000	12.917 RT.	NO MONUMENT SET
3214	238 519.924	2 684 084.634	27+379.000	19.000 RT.	NO MONUMENT SET
3215	238 549.919	2 684 204.227	27+503.000	19.000 RT.	NO MONUMENT SET
3216	238 552.851	2 684 203.592	27+503.000	16.000 RT.	NO MONUMENT SET
3217	238 558.444	2 684 211.384	27+512.000	12.113 RT.	NO MONUMENT SET
3218	238 550.932	2 684 195.020	27+494.000	16.000 RT.	NO MONUMENT SET
3219	238 552.014	2 684 199.785	27+499.000	16.000 RT.	NO MONUMENT SET
3220	238 553.319	2 684 196.482	27+496.000	14.000 RT.	NO MONUMENT SET
3221	238 554.178	2 684 200.304	27+500.000	14.000 RT.	NO MONUMENT SET

RIGHT OF WAY POINT LOCATION TABLE

PT. NO.	LDP NORTHING	LDP EASTING	STATION	OFFSET	DESCRIPTION
3222	238 557.735	2 684 325.844	27+633.000	12.037 RT.	NO MONUMENT SET
3223	238 524.631	2 684 409.584	27+725.150	13.390 RT.	NO MONUMENT SET
3224	238 540.342	2 684 430.502	27+738.000	9.398 LT.	NO MONUMENT SET
3225	238 519.061	2 684 576.588	27+896.000	17.000 LT.	NO MONUMENT SET
3226	238 533.017	2 684 634.271	27+960.000	11.000 LT.	NO MONUMENT SET
3227	238 590.266	2 684 688.838	28+042.000	24.000 LT.	NO MONUMENT SET
3228	238 569.044	2 684 720.409	28+051.000	12.974 RT.	NO MONUMENT SET
3229	238 575.959	2 684 735.234	28+066.494	18.000 RT.	NO MONUMENT SET
3230	238 632.851	2 684 749.877	28+116.000	13.621 LT.	NO MONUMENT SET
3231	238 638.880	2 684 746.990	28+118.000	20.000 LT.	NO MONUMENT SET
3232	238 641.608	2 684 749.915	28+122.000	20.000 LT.	NO MONUMENT SET
3233	238 680.889	2 684 839.661	28+214.000	13.000 RT.	NO MONUMENT SET
3234	238 687.414	2 684 846.121	28+223.000	13.000 RT.	NO MONUMENT SET
3235	238 692.475	2 684 848.234	28+228.000	11.000 RT.	NO MONUMENT SET
3236	238 695.434	2 684 851.049	28+232.000	11.000 RT.	NO MONUMENT SET

SCALE 1:2000



200 100 0 100 200 400 600 METERS
 200 100 0 100 200 400 600 FEET

TO CONVERT FROM METERS TO S. I. FEET, DIVIDE BY 0.3048

METRIC OREGON DEPARTMENT OF TRANSPORTATION
 RIGHT-OF-WAY-BOUNDARY MONUMENTATION MAP
 TOLLGATE SECTION
 WESTON - ELGIN HIGHWAY
 UMATILLA COUNTY

FOR ODOT REGION 5
 3012 ISLAND AVENUE
 LA GRANDE, OR 97850

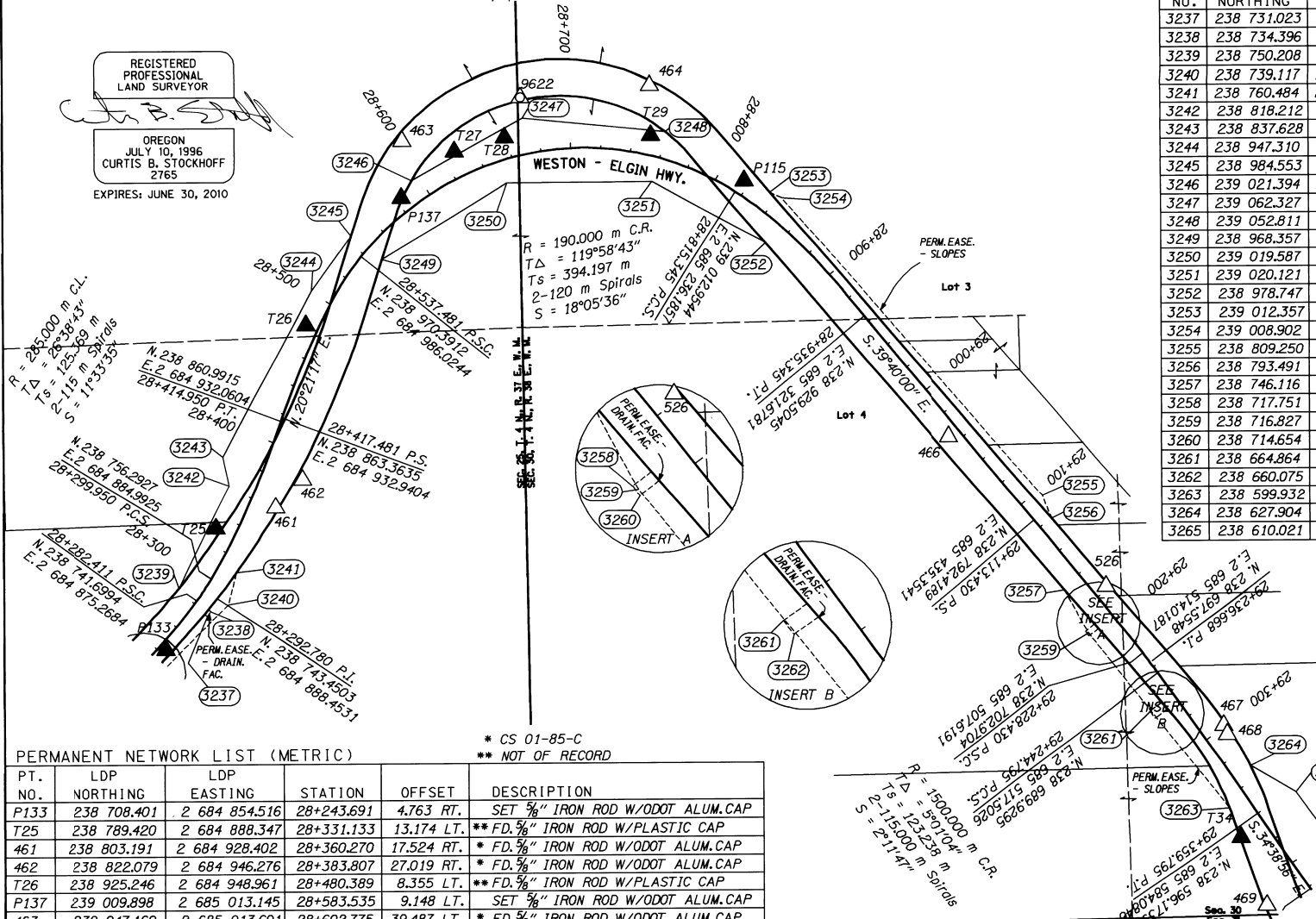
OCTOBER 10, 2008
 SCALE: 1mm = 2m
 KEY NO. 10267 SHEET 15 OF 21

SE 1/4 SEC. 25, T. 4 N., R. 37 E., W.M.
 SW 1/4 SEC. 30, T. 4 N., R. 38 E., W.M.

RIGHT OF WAY LOCATION TABLE (METRIC)

PT. NO.	LDP NORTHING	LDP EASTING	STATION	OFFSET	DESCRIPTION
3237	238 731.023	2 684 882.356	28+278.000	12.000 RT.	NO MONUMENT SET
3238	238 734.396	2 684 884.799	28+282.000	12.000 RT.	NO MONUMENT SET
3239	238 750.208	2 684 863.313	28+282.407	14.674 LT.	NO MONUMENT SET
3240	238 739.117	2 684 896.540	28+292.000	19.000 RT.	NO MONUMENT SET
3241	238 760.484	2 684 902.004	28+312.000	12.480 RT.	NO MONUMENT SET
3242	238 818.212	2 684 897.269	28+362.000	17.000 LT.	NO MONUMENT SET
3243	238 837.628	2 684 893.282	28+379.000	28.000 LT.	NO MONUMENT SET
3244	238 947.310	2 684 952.807	28+501.000	15.000 LT.	NO MONUMENT SET
3245	238 984.553	2 684 979.454	28+544.000	14.072 LT.	NO MONUMENT SET
3246	239 021.394	2 685 019.854	28+595.000	14.521 LT.	NO MONUMENT SET
3247	239 062.327	2 685 094.048	28+672.000	24.000 LT.	NO MONUMENT SET
3248	239 052.811	2 685 189.507	28+759.000	17.883 LT.	NO MONUMENT SET
3249	238 968.357	2 684 999.920	28+545.000	12.008 RT.	NO MONUMENT SET
3250	239 019.587	2 685 083.614	28+652.000	15.000 RT.	NO MONUMENT SET
3251	239 020.121	2 685 180.595	28+759.000	16.000 RT.	NO MONUMENT SET
3252	238 978.747	2 685 255.900	28+853.000	15.296 RT.	NO MONUMENT SET
3253	239 012.357	2 685 259.195	28+834.000	12.689 LT.	NO MONUMENT SET
3254	239 008.902	2 685 267.268	28+842.000	15.000 LT.	NO MONUMENT SET
3255	238 809.250	2 685 440.884	29+104.000	15.000 LT.	NO MONUMENT SET
3256	238 793.491	2 685 446.947	29+120.000	9.609 RT.	NO MONUMENT SET
3257	238 746.116	2 685 455.462	29+162.000	13.968 RT.	NO MONUMENT SET
3258	238 717.751	2 685 469.363	29+193.000	21.000 RT.	NO MONUMENT SET
3259	238 716.827	2 685 471.380	29+195.000	20.000 RT.	NO MONUMENT SET
3260	238 714.654	2 685 471.831	29+197.000	21.000 RT.	NO MONUMENT SET
3261	238 664.864	2 685 512.415	29+262.000	19.000 RT.	NO MONUMENT SET
3262	238 660.075	2 685 515.924	29+268.000	19.000 RT.	NO MONUMENT SET
3263	238 599.932	2 685 565.281	29+346.000	13.330 RT.	NO MONUMENT SET
3264	238 627.904	2 685 579.299	29+331.000	14.126 LT.	NO MONUMENT SET
3265	238 610.021	2 685 609.767	29+363.000	29.000 LT.	NO MONUMENT SET

REGISTERED PROFESSIONAL LAND SURVEYOR
 OREGON
 JULY 10, 1996
 CURTIS B. STOCKHOFF
 2765
 EXPIRES: JUNE 30, 2010



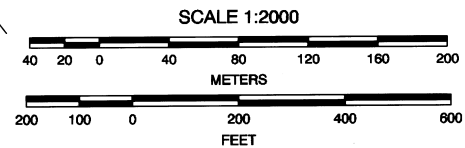
PERMANENT NETWORK LIST (METRIC)

PT. NO.	LDP NORTHING	LDP EASTING	STATION	OFFSET	DESCRIPTION
P133	238 708.401	2 684 854.516	28+243.691	4.763 RT.	SET 3/8" IRON ROD W/ODOT ALUM.CAP
T25	238 789.420	2 684 888.347	28+331.133	13.174 LT.	** FD. 3/8" IRON ROD W/PLASTIC CAP
461	238 803.191	2 684 928.402	28+360.270	17.524 RT.	* FD. 3/8" IRON ROD W/ODOT ALUM.CAP
462	238 822.079	2 684 946.276	28+383.807	27.019 RT.	* FD. 3/8" IRON ROD W/ODOT ALUM.CAP
T26	238 925.246	2 684 948.961	28+480.389	8.355 LT.	** FD. 3/8" IRON ROD W/PLASTIC CAP
P137	239 009.898	2 685 013.145	28+583.535	9.148 LT.	SET 3/8" IRON ROD W/ODOT ALUM.CAP
463	239 047.160	2 685 013.691	28+602.775	39.487 LT.	* FD. 3/8" IRON ROD W/ODOT ALUM.CAP
T27	239 040.020	2 685 048.725	28+626.740	16.572 LT.	** FD. 3/8" IRON ROD W/PLASTIC CAP
T28	239 049.131	2 685 082.267	28+658.862	13.778 LT.	** FD. 3/8" IRON ROD W/PLASTIC CAP
9622	239 076.397	2 685 092.680	28+673.115	38.077 LT.	** FD. IRON ROD
464	239 084.068	2 685 178.972	28+744.182	45.985 LT.	* FD. 3/8" IRON ROD W/ODOT ALUM.CAP
T29	239 050.116	2 685 179.652	28+750.757	12.881 LT.	** FD. 3/8" IRON ROD W/PLASTIC CAP
P115	239 020.105	2 685 242.109	28+816.481	9.212 LT.	SET 3/8" IRON ROD W/ODOT ALUM.CAP
466	238 848.625	2 685 378.502	29+033.871	7.885 RT.	* FD. 3/8" IRON ROD W/ODOT ALUM.CAP
526	238 748.392	2 685 483.303	29+177.816	9.064 LT.	** FD. 3/8" IRON ROD W/ODOT ALUM.CAP
467	238 655.081	2 685 561.768	29+298.807	15.353 LT.	* FD. 3/8" IRON ROD W/ODOT ALUM.CAP
468	238 649.189	2 685 564.049	29+304.906	13.820 LT.	* FD. 3/8" IRON ROD W/ODOT ALUM.CAP
T34	238 580.257	2 685 572.724	29+366.425	18.396 RT.	** FD. 3/8" IRON ROD W/PLASTIC CAP
469	238 534.104	2 685 590.158	29+414.305	30.293 RT.	* FD. 3/8" IRON ROD W/ODOT ALUM.CAP

* CS 01-85-C
 ** NOT OF RECORD

LEGEND

- ▲ FOUND MON. USED AS NETWORK POINT
- ▲ SET NETWORK POINT
- △ FOUND NETWORK POINT
- PROPERTY / RW LINE
- - - EASEMENT LINE
- FEE TAKING
- RW POINT NO.



TO CONVERT FROM METERS TO S. I. FEET, DIVIDE BY 0.3048

OREGON DEPARTMENT OF TRANSPORTATION
 RIGHT-OF-WAY-BOUNDARY MONUMENTATION MAP
 TOLLGATE SECTION
 WESTON - ELGIN HIGHWAY
 UMATILLA COUNTY

FOR ODOT REGION 5
 3012 ISLAND AVENUE
 LA GRANDE, OR 97850
 OCTOBER 10, 2008
 SCALE: 1mm = 2m
 KEY NO. 10267
 SHEET 16 OF 21

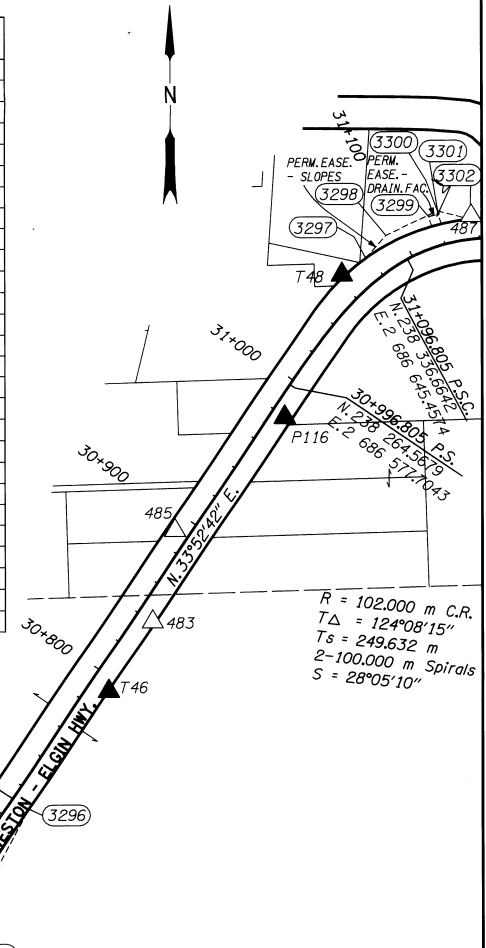
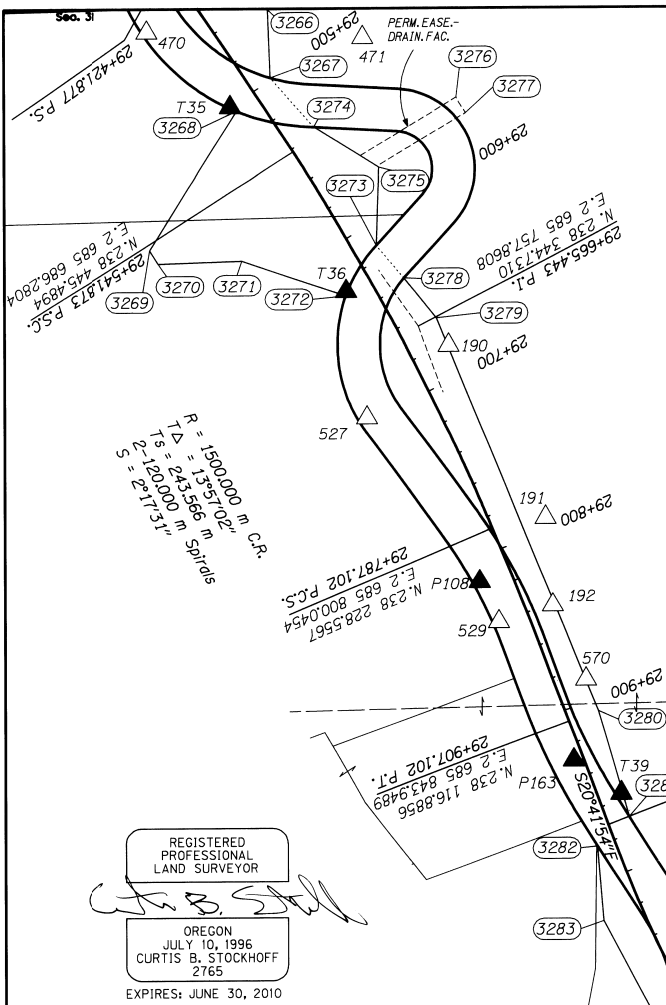
3-07
 RK
 07-42B

N 1/2 SEC 31, T 4 N, R 38 E, WM

* CS 01-85-C
** NOT OF RECORD

PERMANENT NETWORK LIST (METRIC)

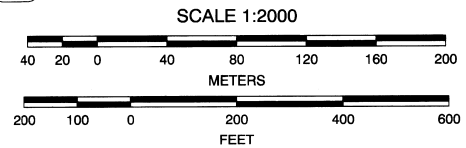
PT. NO.	LDP NORTHING	LDP EASTING	STATION	OFFSET	DESCRIPTION
470	238 514.346	2 685 602.076	29+437.355	31.719 RT.	* FD. 5/8" IRON ROD W/ODOT ALUM.CAP
T35	238 471.758	2 685 649.944	29+499.859	16.120 RT.	** FD. 5/8" IRON ROD W/PLASTIC CAP
471	238 511.017	2 685 726.180	29+509.173	69.110 LT.	* FD. 5/8" IRON ROD W/ODOT ALUM.CAP
T36	238 365.255	2 685 716.443	29+626.690	15.089 RT.	** FD. 5/8" IRON ROD W/PLASTIC CAP
190	238 333.803	2 685 775.218	29+681.969	21.988 LT.	* FD. 5/8" IRON ROD W/ALUM.CAP
527	238 292.600	2 685 728.246	29+697.756	38.491 RT.	** FD. 5/8" IRON ROD W/ODOT ALUM.CAP
191	238 234.515	2 685 830.652	29+793.443	30.517 LT.	* FD. 5/8" IRON ROD W/ALUM.CAP
192	238 183.798	2 685 834.839	29+841.469	15.392 LT.	* FD. 5/8" IRON ROD W/ODOT ALUM.CAP
P108	238 197.691	2 685 927.705	29+812.933	18.608 RT.	SET 5/8" IRON ROD W/ODOT ALUM.CAP
529	238 174.277	2 685 803.828	29+839.012	16.955 RT.	* FD. 5/8" IRON ROD W/ODOT ALUM.CAP
570	238 141.415	2 685 853.795	29+887.652	17.887 LT.	* FD. 5/8" IRON ROD W/ODOT ALUM.CAP
P163	238 094.159	2 685 846.696	29+929.330	5.462 RT.	SET 5/8" IRON ROD W/ODOT ALUM.CAP
T39	238 075.163	2 686 873.958	29+956.735	13.325 LT.	** FD. 5/8" IRON ROD W/PLASTIC CAP
T41	237 956.141	2 685 933.533	30+094.021	17.716 LT.	** FD. 5/8" IRON ROD W/PLASTIC CAP
478B	237 820.127	2 685 992.710	30+223.020	46.407 RT.	SET 5/8" IRON ROD W/ODOT ALUM.CAP
P114	237 804.706	2 686 019.881	30+249.420	48.968 RT.	SET 5/8" IRON ROD W/ODOT ALUM.CAP
479B	237 791.869	2 686 100.082	30+318.717	41.199 RT.	SET 5/8" IRON ROD W/ODOT ALUM.CAP
480B	237 802.469	2 686 158.790	30+370.381	29.050 RT.	SET 5/8" IRON ROD W/ODOT ALUM.CAP
T44	237 878.294	2 686 301.153	30+522.153	7.078 RT.	** FD. 5/8" IRON ROD W/PLASTIC CAP
T45	237 892.724	2 686 286.305	30+518.782	13.355 LT.	** FD. 5/8" IRON ROD W/PLASTIC CAP
T47	237 973.129	2 686 369.152	30+638.095	9.489 LT.	** FD. 5/8" IRON ROD W/PLASTIC CAP
T46	238 088.493	2 686 473.619	30+792.598	11.736 RT.	** FD. 5/8" IRON ROD W/PLASTIC CAP
483	238 129.084	2 686 498.877	30+840.378	10.079 RT.	* FD. 5/8" IRON ROD W/ODOT ALUM.CAP
485	238 181.031	2 686 511.705	30+890.636	8.228 LT.	* FD. 5/8" IRON ROD W/ODOT ALUM.CAP
P116	238 245.999	2 686 574.637	30+979.674	7.805 RT.	SET 5/8" IRON ROD W/ODOT ALUM.CAP
T48	238 328.141	2 686 607.660	31+063.219	15.705 LT.	** FD. 5/8" IRON ROD W/PLASTIC CAP
487	238 361.767	2 686 682.141	31+136.768	13.683 LT.	* FD. 5/8" IRON ROD W/ODOT ALUM.CAP



REGISTERED PROFESSIONAL LAND SURVEYOR
CURTIS B. STOCKHOFF
2765
EXPIRES: JUNE 30, 2010

LEGEND

- △ FOUND MON. USED AS NETWORK POINT
- ▲ SET NETWORK POINT
- △ FOUND NETWORK POINT
- PROPERTY / RW LINE
- - - - EASEMENT LINE
- FEE TAKING
- RW POINT NO.



TO CONVERT FROM METERS TO S. I. FEET, DIVIDE BY 0.3048

METRIC OREGON DEPARTMENT OF TRANSPORTATION
RIGHT-OF-WAY-BOUNDARY MONUMENTATION MAP
TOLLGATE SECTION
WESTON - ELGIN HIGHWAY
UMATILLA COUNTY

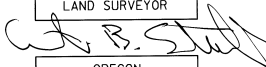
FOR RIGHT OF WAY POINT LOCATION TABLE, SEE PAGE 18

FOR ODOT REGION 5
3012 ISLAND AVENUE
LA GRANDE, OR 97850
OCTOBER 10, 2008
SCALE: 1mm = 2m
KEY NO. 10267
SHEET 17 OF 21

N¹/₂ SEC. 31, T. 4 N., R. 38 E., W.M.

RIGHT OF WAY LOCATION TABLE (METRIC)

PT. NO.	LDP NORTHING	LDP EASTING	STATION	OFFSET	DESCRIPTION
3266	238 527.370	2 685 671.653	29+466.000	33.000 LT.	NO MONUMENT SET
3267	238 488.318	2 685 673.234	29+499.000	12.444 LT.	NO MONUMENT SET
3268	238 469.349	2 685 653.748	29+504.000	14.287 RT.	NO MONUMENT SET
3269	238 389.503	2 685 603.367	29+545.000	100.000 RT.	NO MONUMENT SET
3270	238 381.592	2 685 608.319	29+555.000	100.000 RT.	NO MONUMENT SET
3271	238 383.240	2 685 656.507	29+580.000	58.000 RT.	NO MONUMENT SET
3272	238 362.501	2 685 716.193	29+629.000	16.646 RT.	NO MONUMENT SET
3273	238 391.870	2 685 733.775	29+612.000	13.076 LT.	NO MONUMENT SET
3274	238 460.037	2 685 698.142	29+536.000	17.818 LT.	NO MONUMENT SET
3275	238 436.419	2 685 735.384	29+575.000	37.000 LT.	NO MONUMENT SET
3276	238 476.888	2 685 779.828	29+564.000	96.000 LT.	NO MONUMENT SET
3277	238 467.799	2 685 785.359	29+574.000	96.000 LT.	NO MONUMENT SET
3278	238 372.959	2 685 749.634	29+636.000	17.686 LT.	NO MONUMENT SET
3279	238 349.569	2 685 768.210	29+665.000	23.000 LT.	NO MONUMENT SET
3280	238 123.248	2 685 860.787	29+907.099	18.000 LT.	NO MONUMENT SET
3281	238 061.873	2 685 878.487	29+970.769	12.865 LT.	NO MONUMENT SET
3282	238 045.099	2 685 860.249	29+980.000	10.129 RT.	NO MONUMENT SET
3283	238 001.603	2 685 863.649	30+021.000	23.000 RT.	NO MONUMENT SET
3284	237 936.637	2 685 898.782	30+090.769	22.000 RT.	NO MONUMENT SET
3285	237 929.609	2 685 916.860	30+106.000	11.307 RT.	NO MONUMENT SET
3286	237 944.015	2 685 937.578	30+107.000	13.907 LT.	NO MONUMENT SET
3287	237 883.832	2 686 014.698	30+212.000	20.000 LT.	NO MONUMENT SET
3288	237 864.943	2 686 073.990	30+280.000	25.572 LT.	NO MONUMENT SET
3289	237 853.324	2 686 163.994	30+380.000	21.138 LT.	NO MONUMENT SET
3290	237 869.571	2 686 247.370	30+471.000	13.599 LT.	NO MONUMENT SET
3291	237 839.173	2 686 011.235	30+230.000	21.028 RT.	NO MONUMENT SET
3292	237 813.610	2 686 100.911	30+317.000	19.526 RT.	NO MONUMENT SET
3293	237 846.935	2 686 257.194	30+470.000	11.057 RT.	NO MONUMENT SET
3294	237 854.175	2 686 286.945	30+498.000	19.000 RT.	NO MONUMENT SET
3295	237 943.531	2 686 386.191	30+625.000	22.000 RT.	NO MONUMENT SET
3296	238 020.897	2 686 427.674	30+710.867	11.271 RT.	NO MONUMENT SET
3297	238 337.222	2 686 621.402	31+078.000	13.608 LT.	NO MONUMENT SET
3298	238 350.385	2 686 633.101	31+093.000	18.000 LT.	NO MONUMENT SET
3299	238 361.235	2 686 657.813	31+116.000	18.000 LT.	NO MONUMENT SET
3300	238 362.841	2 686 663.471	31+121.000	18.000 LT.	NO MONUMENT SET
3301	238 364.778	2 686 662.973	31+121.000	20.000 LT.	NO MONUMENT SET
3302	238 359.750	2 686 681.478	31+136.000	11.743 LT.	NO MONUMENT SET

REGISTERED PROFESSIONAL LAND SURVEYOR

 OREGON
 JULY 10, 1996
 CURTIS B. STOCKHOFF
 2165
 EXPIRES: JUNE 30, 2010

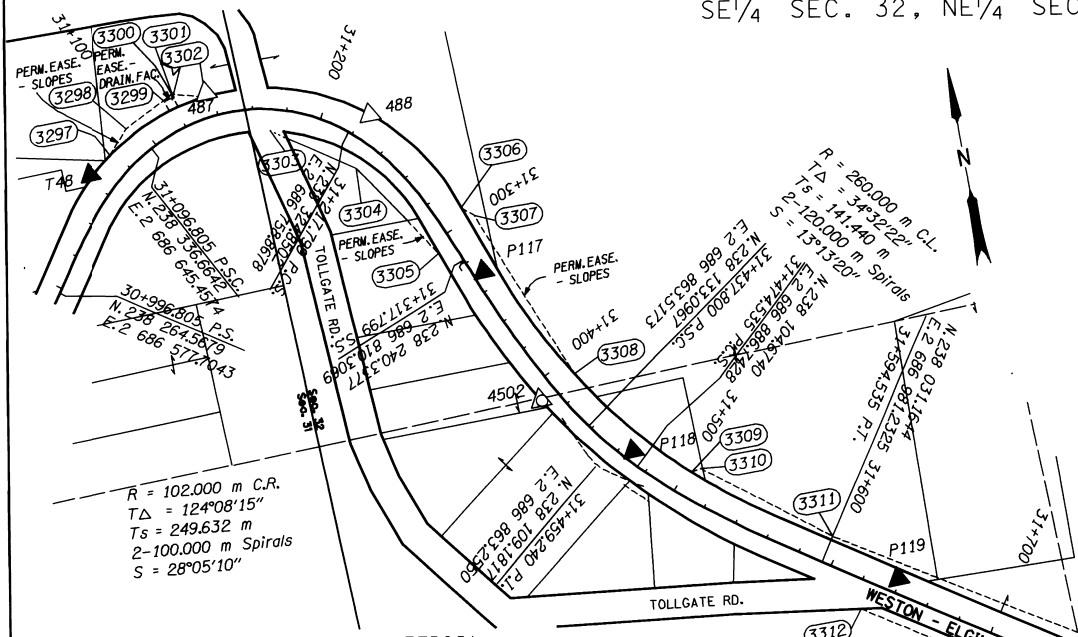
TO CONVERT FROM METERS TO S. I. FEET, DIVIDE BY 0.3048

METRIC OREGON DEPARTMENT OF TRANSPORTATION
 RIGHT-OF-WAY-BOUNDARY MONUMENTATION MAP
 TOLLGATE SECTION
 WESTON - ELGIN HIGHWAY
 UMATILLA COUNTY

3-09
 KK
 09-47-B

FOR ODOT REGION 5
 3012 ISLAND AVENUE
 LA GRANDE, OR 97850
 OCTOBER 10, 2008
 SCALE: 1mm = 1m
 KEY NO. 10267 SHEET 18 OF 21

SE 1/4 SEC. 32, NE 1/4 SEC. 31, W 1/2 SEC. 32, T. 4 N., R. 38 E., W.M.



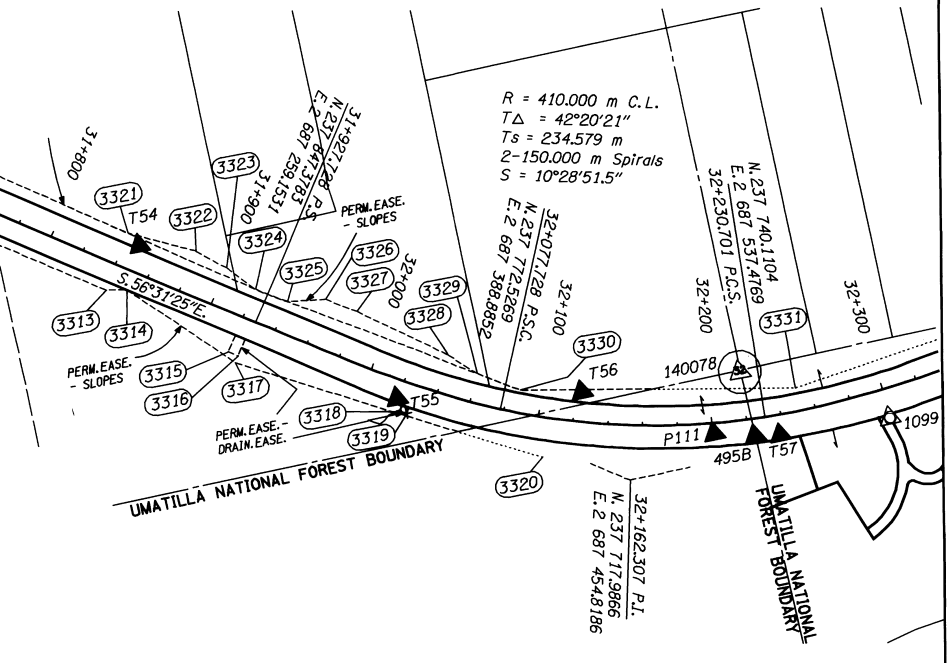
PERMANENT NETWORK LIST (METRIC)

PT. NO.	LDP NORTHING	LDP EASTING	STATION	OFFSET	DESCRIPTION
T48	238 328.141	2 686 607.660	31+063.219	15.705 LT.	**FD. 5/8" IRON ROD W/PLASTIC CAP
487	238 361.767	2 686 682.141	31+136.768	13.683 LT.	**FD. 5/8" IRON ROD W/ODOT ALUM. CAP
488	238 332.174	2 686 772.492	31+222.844	14.501 LT.	**FD. 5/8" IRON ROD W/ODOT ALUM. CAP
P117	238 231.801	2 686 820.268	31+329.453	6.032 LT.	SET 5/8" IRON ROD W/ODOT ALUM. CAP
4502	238 152.661	2 686 839.105	31+408.687	10.214 RT.	BR. DISC IN CONC. BM X514
P118	238 114.234	2 686 886.064	31+466.933	5.954 LT.	SET 5/8" IRON ROD W/ODOT ALUM. CAP
P119	238 013.720	2 687 022.546	31+638.613	8.238 LT.	SET 5/8" IRON ROD W/ODOT ALUM. CAP
P120	237 947.307	2 687 094.130	31+734.955	7.673 RT.	SET 5/8" IRON ROD W/ODOT ALUM. CAP
T54	237 903.556	2 687 201.395	31+848.559	15.000 LT.	**FD. 5/8" IRON ROD W/PLASTIC CAP
T55	237 789.533	2 687 331.245	32+019.088	10.574 RT.	**FD. 5/8" IRON ROD W/PLASTIC CAP
T56	237 773.485	2 687 436.690	32+123.351	17.127 LT.	**FD. 5/8" IRON ROD W/PLASTIC CAP
140078	237 767.816	2 687 527.898	32+219.597	27.284 LT.	*FD. BRASS CAP
P111	237 735.976	2 687 507.139	32+200.901	6.087 RT.	SET 5/8" IRON ROD W/ODOT ALUM. CAP
495B	237 730.351	2 687 529.882	32+223.553	10.034 RT.	SET 5/8" IRON ROD W/ODOT ALUM. CAP
T57	237 728.418	2 687 544.260	32+237.616	11.555 RT.	**FD. 5/8" IRON ROD W/PLASTIC CAP
1099	237 726.447	2 687 607.905	32+299.548	16.698 RT.	*FD. 5/8" IRON ROD W/CAP

* CS 01-85-C
** NOT OF RECORD

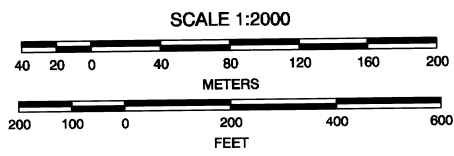
RIGHT OF WAY LOCATION TABLE (METRIC)

PT. NO.	LDP NORTHING	LDP EASTING	STATION	OFFSET	DESCRIPTION
3297	238 337.222	2 686 621.402	31+078.000	13.608 LT.	NO MONUMENT SET
3298	238 350.385	2 686 633.101	31+093.000	18.000 LT.	NO MONUMENT SET
3299	238 361.235	2 686 657.813	31+116.000	18.000 LT.	NO MONUMENT SET
3300	238 362.841	2 686 663.471	31+121.000	18.000 LT.	NO MONUMENT SET
3301	238 364.778	2 686 662.973	31+121.000	20.000 LT.	NO MONUMENT SET
3302	238 359.750	2 686 681.478	31+136.000	11.743 LT.	NO MONUMENT SET
3303	238 334.094	2 686 714.630	31+171.000	12.000 RT.	NO MONUMENT SET
3304	238 303.576	2 686 759.270	31+234.000	15.000 RT.	NO MONUMENT SET
3305	238 246.575	2 686 797.073	31+307.000	9.916 RT.	NO MONUMENT SET
3306	238 269.941	2 686 814.660	31+292.455	15.392 LT.	NO MONUMENT SET
3307	238 264.189	2 686 821.066	31+300.000	19.000 LT.	NO MONUMENT SET
3308	238 163.637	2 686 860.998	31+410.000	14.242 LT.	NO MONUMENT SET
3309	238 095.822	2 686 916.766	31+503.000	14.411 LT.	NO MONUMENT SET
3310	238 096.803	2 686 922.648	31+507.000	19.000 LT.	NO MONUMENT SET
3311	238 044.510	2 686 990.058	31+594.530	16.000 LT.	NO MONUMENT SET
3312	238 000.561	2 686 998.503	31+625.817	16.000 RT.	NO MONUMENT SET
3313	237 881.868	2 687 177.991	31+841.000	16.000 RT.	NO MONUMENT SET
3314	237 879.612	2 687 189.687	31+852.000	11.431 RT.	NO MONUMENT SET
3315	237 833.288	2 687 240.576	31+920.000	22.000 RT.	NO MONUMENT SET
3316	237 829.978	2 687 245.581	31+926.000	22.000 RT.	NO MONUMENT SET
3317	237 826.642	2 687 243.375	31+926.000	26.000 RT.	NO MONUMENT SET
3318	237 781.974	2 687 331.568	32+023.000	17.000 RT.	NO MONUMENT SET
3319	237 779.979	2 687 335.159	32+027.000	17.000 RT.	NO MONUMENT SET
3320	237 740.645	2 687 407.771	32+106.000	23.000 RT.	NO MONUMENT SET
3321	237 911.647	2 687 196.485	31+840.000	19.040 LT.	NO MONUMENT SET
3322	237 894.555	2 687 233.137	31+880.000	25.000 LT.	NO MONUMENT SET
3323	237 881.855	2 687 248.716	31+900.000	23.000 LT.	NO MONUMENT SET
3324	237 866.728	2 687 262.691	31+920.000	18.091 LT.	NO MONUMENT SET
3325	237 856.002	2 687 279.548	31+940.000	18.438 LT.	NO MONUMENT SET
3326	237 853.136	2 687 301.372	31+960.000	28.000 LT.	NO MONUMENT SET
3327	237 842.559	2 687 317.892	31+980.000	28.000 LT.	NO MONUMENT SET
3328	237 808.205	2 687 365.015	32+040.000	22.000 LT.	NO MONUMENT SET
3329	237 794.771	2 687 379.810	32+060.000	16.577 LT.	NO MONUMENT SET
3330	237 781.078	2 687 402.272	32+087.000	13.000 LT.	NO MONUMENT SET
3331	237 753.015	2 687 557.547	32+251.000	13.000 LT.	NO MONUMENT SET



LEGEND

- FOUND MON. USED AS NETWORK POINT
- SET NETWORK POINT
- FOUND NETWORK POINT
- PROPERTY / RW LINE
- EASEMENT LINE
- FEE TAKING
- FALSE CALL LINE
- RW POINT NO.



REGISTERED PROFESSIONAL LAND SURVEYOR
 OREGON
 JULY 10, 1996
 CURTIS B. STOCKHOFF
 2765
 EXPIRES: JUNE 30, 2010

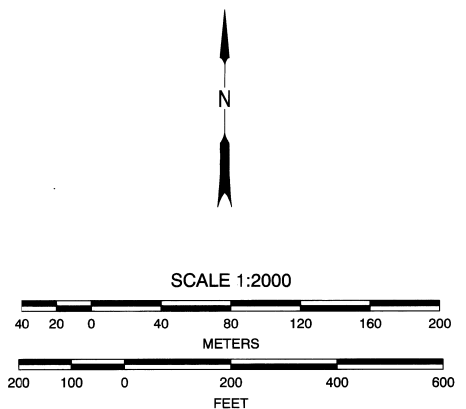
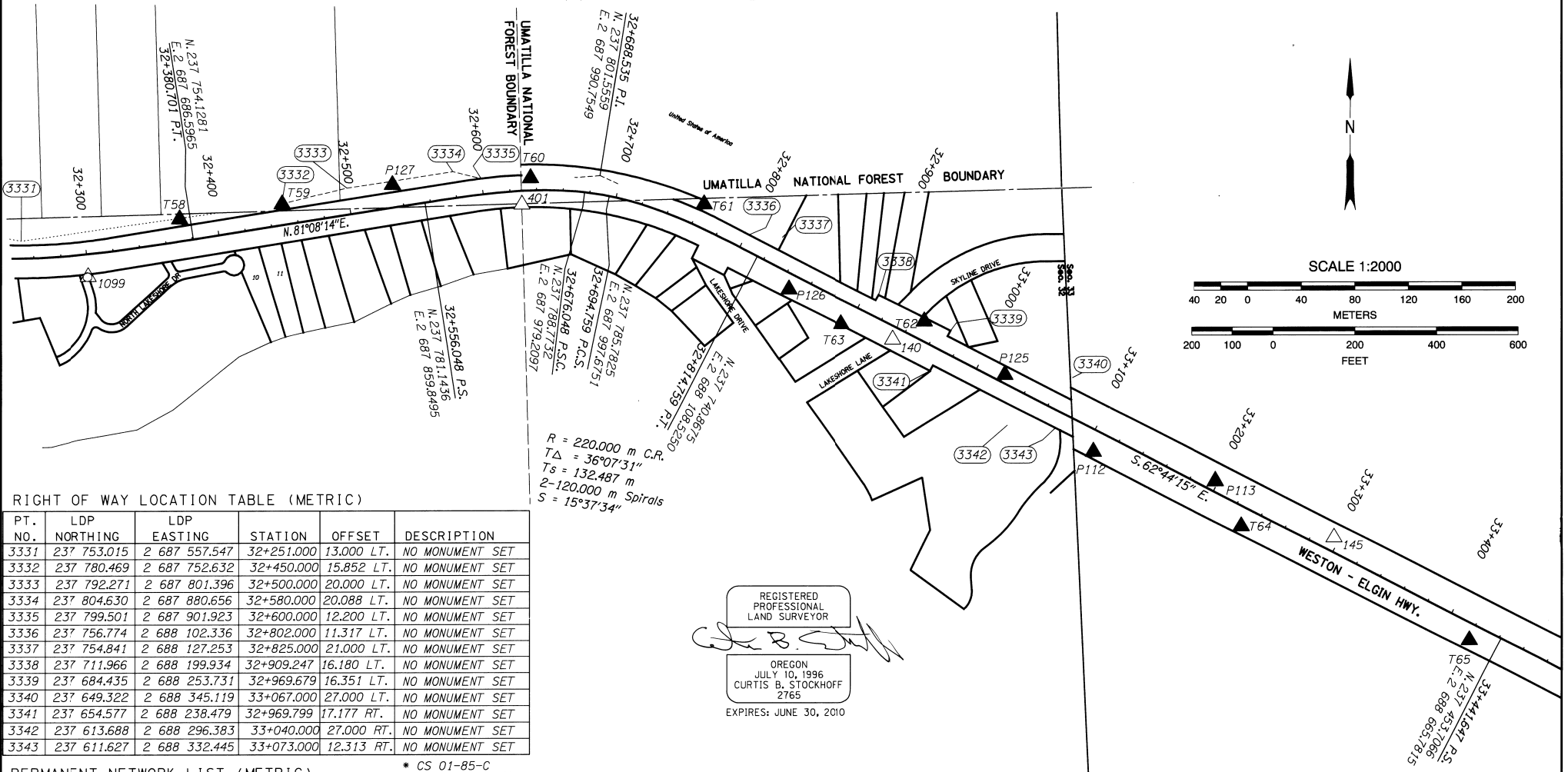
TO CONVERT FROM METERS TO S. I. FEET, DIVIDE BY 0.3048

T OREGON DEPARTMENT OF TRANSPORTATION
 RIGHT-OF-WAY-BOUNDARY MONUMENTATION MAP
 TOLLGATE SECTION
 WESTON - ELGIN HIGHWAY
 UMATILLA COUNTY

FOR ODOT REGION 5
 3012 ISLAND AVENUE
 LA GRANDE, OR 97850

OCTOBER 10, 2008
 SCALE: 1mm = 2m
 KEY NO. 10267
 SHEET 19 OF 21

SW/4 SEC. 33, E/2 SEC. 32, T. 4 N., R. 38 E., W.M.



RIGHT OF WAY LOCATION TABLE (METRIC)

PT. NO.	LDP NORTHING	LDP EASTING	STATION	OFFSET	DESCRIPTION
3331	237 753.015	2 687 557.547	32+251.000	13.000 LT.	NO MONUMENT SET
3332	237 780.469	2 687 752.632	32+450.000	15.852 LT.	NO MONUMENT SET
3333	237 792.271	2 687 801.396	32+500.000	20.000 LT.	NO MONUMENT SET
3334	237 804.630	2 687 880.656	32+580.000	20.088 LT.	NO MONUMENT SET
3335	237 799.501	2 687 901.923	32+600.000	12.200 LT.	NO MONUMENT SET
3336	237 756.774	2 688 102.336	32+802.000	11.317 LT.	NO MONUMENT SET
3337	237 754.841	2 688 127.253	32+825.000	21.000 LT.	NO MONUMENT SET
3338	237 711.966	2 688 199.934	32+909.247	16.180 LT.	NO MONUMENT SET
3339	237 684.435	2 688 253.731	32+969.679	16.351 LT.	NO MONUMENT SET
3340	237 649.322	2 688 345.119	33+067.000	27.000 LT.	NO MONUMENT SET
3341	237 654.577	2 688 238.479	32+969.799	17.177 RT.	NO MONUMENT SET
3342	237 613.688	2 688 296.383	33+040.000	27.000 RT.	NO MONUMENT SET
3343	237 611.627	2 688 332.445	33+073.000	12.313 RT.	NO MONUMENT SET

PERMANENT NETWORK LIST (METRIC)

PT. NO.	LDP NORTHING	LDP EASTING	STATION	OFFSET	DESCRIPTION
1099	237 726.447	2 687 607.905	32+299.548	16.698 RT.	*FD. 5/8" IRON ROD W/CAP
T58	237 769.030	2 687 676.198	32+372.708	16.325 LT.	**FD. 5/8" IRON ROD W/PLASTIC CAP
T59	237 780.263	2 687 752.983	32+450.316	15.594 LT.	**FD. 5/8" IRON ROD W/PLASTIC CAP
P127	237 794.776	2 687 835.513	32+534.096	17.219 LT.	SET 5/8" IRON ROD W/ODOT ALUM.CAP
0401	237 779.617	2 687 932.299	32+628.486	10.323 RT.	*FD. 5/8" IRON ROD W/ODOT ALUM.CAP
T60	237 799.687	2 687 938.842	32+635.927	9.435 LT.	**FD. 5/8" IRON ROD W/PLASTIC CAP
T61	237 779.573	2 688 068.624	32+762.425	17.056 LT.	**FD. 5/8" IRON ROD W/PLASTIC CAP
P126	237 716.254	2 688 132.136	32+847.017	11.064 RT.	SET 5/8" IRON ROD W/ODOT ALUM.CAP
T63	237 689.601	2 688 171.641	32+894.342	16.660 RT.	**FD. 5/8" IRON ROD W/PLASTIC CAP
0140	237 677.922	2 688 210.528	32+934.259	9.229 RT.	*FD. 5/8" IRON ROD W/ODOT ALUM.CAP
T62	237 691.604	2 688 234.120	32+948.963	13.739 LT.	**FD. 5/8" IRON ROD W/PLASTIC CAP
P125	237 651.666	2 688 294.465	33+020.899	5.881 LT.	SET 5/8" IRON ROD W/ODOT ALUM.CAP
P112	237 593.735	2 688 360.812	33+106.412	15.224 RT.	SET 5/8" IRON ROD W/ODOT ALUM.CAP
P113	237 572.014	2 688 452.557	33+197.916	7.494 LT.	SET 5/8" IRON ROD W/ODOT ALUM.CAP
T64	237 538.280	2 688 471.753	33+230.432	13.700 RT.	**FD. 5/8" IRON ROD W/PLASTIC CAP
0145	237 529.572	2 688 440.896	33+295.882	10.232 LT.	*FD. 5/8" IRON ROD W/ODOT ALUM.CAP
T65	237 452.511	2 688 642.023	33+421.075	11.946 RT.	**FD. 5/8" IRON ROD W/PLASTIC CAP

REGISTERED PROFESSIONAL LAND SURVEYOR

 OREGON
 JULY 10, 1996
 CURTIS B. STOCKHOFF
 2765
 EXPIRES: JUNE 30, 2010

LEGEND

	FOUND MON. USED AS NETWORK POINT
	SET NETWORK POINT
	FOUND NETWORK POINT
	PROPERTY / RW LINE
	EASEMENT LINE
	EASE. FALSE CALL LINE
	RW POINT NO.

TO CONVERT FROM METERS TO S. I. FEET, DIVIDE BY 0.3048

METRIC OREGON DEPARTMENT OF TRANSPORTATION
 RIGHT-OF-WAY-BOUNDARY MONUMENTATION MAP
 TOLLGATE SECTION
 WESTON - ELGIN HIGHWAY
 UMATILLA COUNTY

FOR ODOT REGION 5
 3012 ISLAND AVENUE
 LA GRANDE, OR 97850
 KEY NO. 10267

OCTOBER 10, 2008
 SCALE: 1mm = 2m
 SHEET 20 OF 21

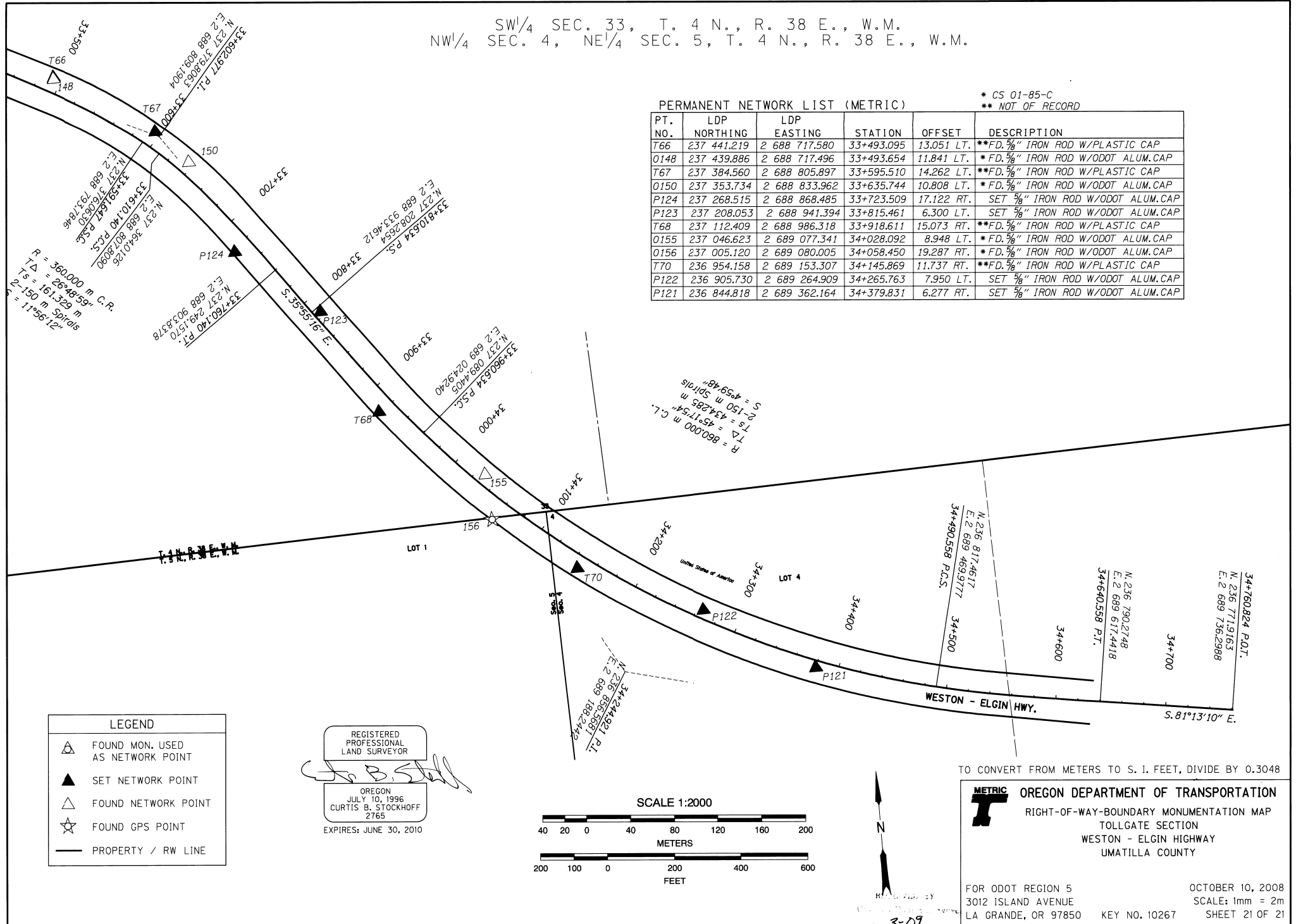
NO. 3-07
 KK
 09-49B

SW¹/₄ SEC. 33, T. 4 N., R. 38 E., W.M.
 NW¹/₄ SEC. 4, NE¹/₄ SEC. 5, T. 4 N., R. 38 E., W.M.

PERMANENT NETWORK LIST (METRIC)

* CS 01-85-C
 ** NOT OF RECORD

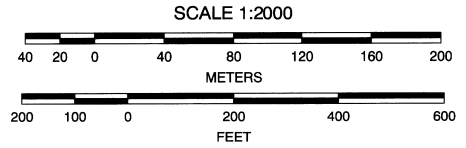
PT. NO.	LDP NORTHING	LDP EASTING	STATION	OFFSET	DESCRIPTION
T66	237 441.219	2 688 717.580	33+493.095	13.051 LT.	**FD. 5/8" IRON ROD W/PLASTIC CAP
O148	237 439.886	2 688 717.496	33+493.654	11.841 LT.	**FD. 5/8" IRON ROD W/ODOT ALUM. CAP
T67	237 384.560	2 688 805.897	33+595.510	14.262 LT.	**FD. 5/8" IRON ROD W/PLASTIC CAP
O150	237 353.734	2 688 833.962	33+635.744	10.808 LT.	**FD. 5/8" IRON ROD W/ODOT ALUM. CAP
P124	237 268.515	2 688 868.485	33+723.509	17.122 RT.	SET 5/8" IRON ROD W/ODOT ALUM. CAP
P123	237 208.053	2 688 941.394	33+815.461	6.300 LT.	SET 5/8" IRON ROD W/ODOT ALUM. CAP
T68	237 112.409	2 688 986.318	33+918.611	15.073 RT.	**FD. 5/8" IRON ROD W/PLASTIC CAP
O155	237 046.623	2 689 077.341	34+028.092	8.948 LT.	**FD. 5/8" IRON ROD W/ODOT ALUM. CAP
O156	237 005.120	2 689 080.005	34+058.450	19.287 RT.	**FD. 5/8" IRON ROD W/ODOT ALUM. CAP
T70	236 954.158	2 689 153.307	34+145.869	11.737 RT.	**FD. 5/8" IRON ROD W/PLASTIC CAP
P122	236 905.730	2 689 264.909	34+265.763	7.950 LT.	SET 5/8" IRON ROD W/ODOT ALUM. CAP
P121	236 844.818	2 689 362.164	34+379.831	6.277 RT.	SET 5/8" IRON ROD W/ODOT ALUM. CAP



LEGEND

	FOUND MON. USED AS NETWORK POINT
	SET NETWORK POINT
	FOUND NETWORK POINT
	FOUND GPS POINT
	PROPERTY / RW LINE

REGISTERED PROFESSIONAL LAND SURVEYOR
Curtis B. Stockhoff
 OREGON JULY 10, 1996 CURTIS B. STOCKHOFF 2765
 EXPIRES: JUNE 30, 2010



TO CONVERT FROM METERS TO S. I. FEET, DIVIDE BY 0.3048

METRIC OREGON DEPARTMENT OF TRANSPORTATION
 RIGHT-OF-WAY-BOUNDARY MONUMENTATION MAP
 TOLLGATE SECTION
 WESTON - ELGIN HIGHWAY
 UMATILLA COUNTY

FOR ODOT REGION 5
 3012 ISLAND AVENUE
 LA GRANDE, OR 97850
 KEY NO. 10267

OCTOBER 10, 2008
 SCALE: 1mm = 2m
 SHEET 21 OF 21

3-09
 09-47-B