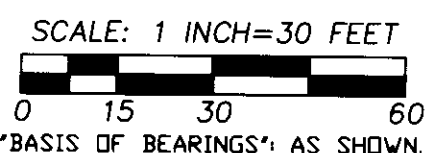
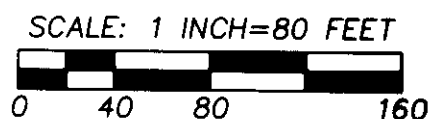
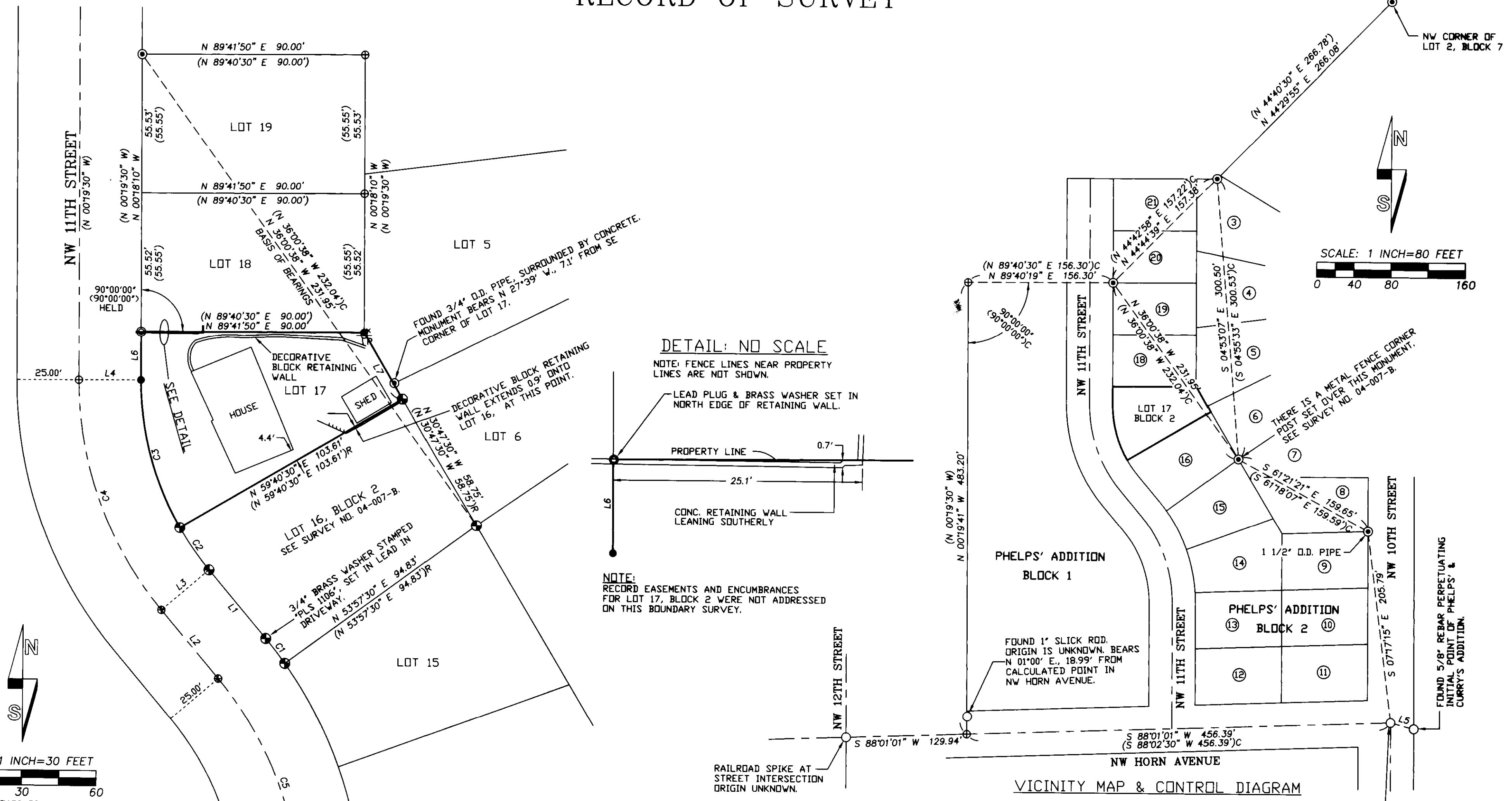
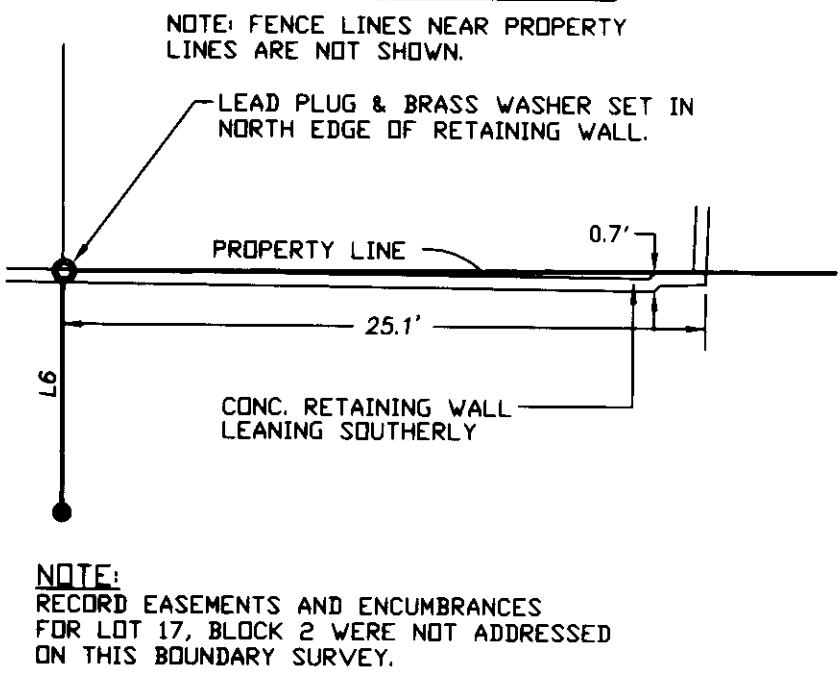


RECORD OF SURVEY



DETAIL: NO SCALE



NARRATIVE

THIS SURVEY WAS MADE AT THE REQUEST OF DONNA SCHWEIGART TO MONUMENT THE BOUNDARY OF LOT 17, BLOCK 2, PHELPS' ADDITION.

LOT 16 OF BLOCK 2 WAS SURVEYED BY THIS FIRM IN 2003 AND RECORDED AS UMATILLA COUNTY SURVEY NO. 04-007-B. COMMON DIMENSIONS OF THIS SURVEY ARE IDENTICAL TO THOSE ON SAID SURVEY. I USED CONTROL AND CORNER TIES FROM SAID SURVEY NO. 04-007-B AS THE BASIS FOR THIS SURVEY.

WE MADE A CORNER SEARCH FOR PLAT MONUMENTS ALONG THE EAST LINE OF LOTS 17, 18, 19, 20 & 21 OF BLOCK 2 AND ALONG THE WEST LINE OF LOTS 4 & 5 OF SAID BLOCK 2. THERE IS A SANITARY SEWER LINE ALONG THIS LINE AND WE DID NOT RECOVER ANY PLAT MONUMENTS.

I REESTABLISHED THE NW CORNER OF LOT 17 BY PROPORTION MEASUREMENT BETWEEN THE RECOVERED NW CORNER OF LOT 19 AND THE CALCULATED POINT OF TANGENCY ON THE EAST LINE OF NW 11TH STREET. I TURNED THE RECORD ANGLE OF 90°00'00" FROM THE REESTABLISHED NW CORNER OF LOT 17 AND MEASURED THE RECORD DISTANCE OF 90.00 FEET TO REESTABLISH THE NE CORNER OF LOT 17.

THE SURVEY WAS MADE BY A 2 PERSON CREW USING A LEICA TPC 803 THREE SECOND TOTAL STATION. THE SURVEY WAS MADE BY A COMBINATION OF RADIAL TIES AND CLOSED TRAVERSE. MONUMENTS WERE ESTABLISHED BY RADIAL METHODS AND VERIFIED BY SEPARATE OBSERVATIONS TO DIFFERENT CONTROL POINTS.

LINE NO.	BEARING	DISTANCE	RECORD DIMENSION
L1	N 40°19'30" W	35.75'	(N 40°19'30" W 35.75')R
L2	S 40°19'30" E	35.75'	(S 40°19'30" E 35.75')R
L3	N 49°40'30" E	25.00'	(N 49°40'30" E 25.00')R
L4	S 89°40'30" W	25.00'	(S 89°40'30" W 25.00')R
L5	S 75°19'08" E	25.88'	(S 75°19'08" E 25.88')R
L6	N 00°18'10" W	19.40'	(N 00°19'30" W 19.41')
L7	N 30°34'45" W	30.89'	(N 30°47'30" W 30.69')

CURVE NO.	DELTA	RADIUS	LENGTH	LONG CHORD	RECORD CURVE DATA
C1	4°16'58"	168.24'	12.58'	N 38°11'31" W 12.57'	(R=168.24' L=12.58')
C2	10°00'01"	118.24'	20.64'	N 35°19'29" W 20.61'	(R=118.24' L=20.64')
C3	29°59'59"	118.24'	61.91'	N 15°19'29" W 61.20'	(R=118.24' L=61.91')
C4	40°00'00"	143.24'	100.00'	S 20°19'30" E 97.98'	(R=143.24' L=100.00')
C5	40°00'00"	143.24'	100.00'	S 20°19'30" E 97.98'	(R=143.24' L=100.00')

LEGEND

- - FOUND MONUMENT AS NOTED.
- ⊙ - SET LEAD PLUG IN CONCRETE WITH 3/4" BRASS WASHER STAMPED 'PLS 1106'.
- - SET 5/8" BY 24" IRON REBAR WITH 1 1/4" RED PLASTIC CAP MARKED 'OR PLS 1106 WA PLS 17372'.
- ⊙ - FOUND PLAT MONUMENT FROM PHELPS AND CURRY'S ADDITION, 1" O.D. IRON PIPE UNLESS OTHERWISE NOTED.
- ⊕ - FOUND 5/8" REBAR WITH YELLOW PLASTIC CAP FROM SURVEY NO. 04-007-B, UNLESS OTHERWISE NOTED.
- ⊕ - CALCULATED POINT ONLY, NOT SET OR FOUND.
- Ⓢ - INDICATES LOT NUMBER, BLOCK 2 OR 7 OF PHELPS' ADDITION.
- (XDX) - INDICATES RECORD DIMENSION FROM PLAT OF PHELPS' AND CURRY'S ADDITION.
- (XDX)C - INDICATES CALCULATED RECORD DIMENSION FROM PLAT OF PHELPS' AND CURRY'S ADDITION.
- (XDX)R - INDICATES RECORD DIMENSION FROM SURVEY NO. 04-007-B.

REGISTERED PROFESSIONAL LAND SURVEYOR <i>Will R. Wells</i> OREGON JULY 22, 1977 WILLIAM R. WELLS 1106 RENEWS 6/30/10	WELLS SURVEYING 2602 N.E. RIVERSIDE PLACE P.O. BOX 1696 PENDLETON, OR 97801 PHONE: (541) 276-6362	PROJECT: SURVEY FOR: DONNA SCHWEIGART LOT 17, BLOCK 2, PHELPS' ADDITION LOCATED IN THE SW1/4 OF SECTION 3, T2N., R32E., W.M., CITY OF PENDLETON, UMATILLA COUNTY, OREGON.
DATE: 10/08	DR. BY: JMW	
CK. BY: WRW	NO: [RECEIVED]	

Umatilla County Surveyors
 Date: 11-08
 03 DB
 08-148-B