

N.E. 1/4 SEC. 33 T.6 S. R. 31 E.
 S.E. 1/4 SEC. 28 T.6 S. R. 31 E.

NARRATIVE

THE PURPOSE OF THIS SURVEY IS TO RESOLVE THE LOCATION OF THE EXISTING RIGHT-OF-WAY (R/W) FOR A PORTION OF HIGHWAY 28 BEGINNING SOUTHERLY 1500' AND ENDING NORTHERLY 4600' OF CAMAS CREEK BRIDGE NUMBER 04728. THIS SURVEY IS TO ESTABLISH A HORIZONTAL CONTROL NETWORK AND RECOVER THE POSITION OF THE MONUMENTS. THIS SURVEY WAS DONE IN PREPARATION FOR THE PROPOSED CAMAS CREEK BRIDGE CONSTRUCTION BY OBDP.

REFERENCE DOCUMENTS USED:

- ODOT DRG 5B-33-19
- ODOT DRG 1R-1-164
- ODOT DRG 9C-36-1
- ODOT DRG 10B-6-4
- ODOT DRG 31V-106
- COUNTY SURVEY (CS) I-13-B
- (CS) 06-484-C
- (CS) H-229-AX
- (CS) 89-13-B
- (CS) Q-1262-B

THE GPS NETWORK CONTROL POINTS 100, 101, AND 102 WERE SET USING BASELINES BETWEEN PUBLISHED GOBS, IDNP, AND ORSI NGS CORS STATIONS IN DECEMBER OF 2006.

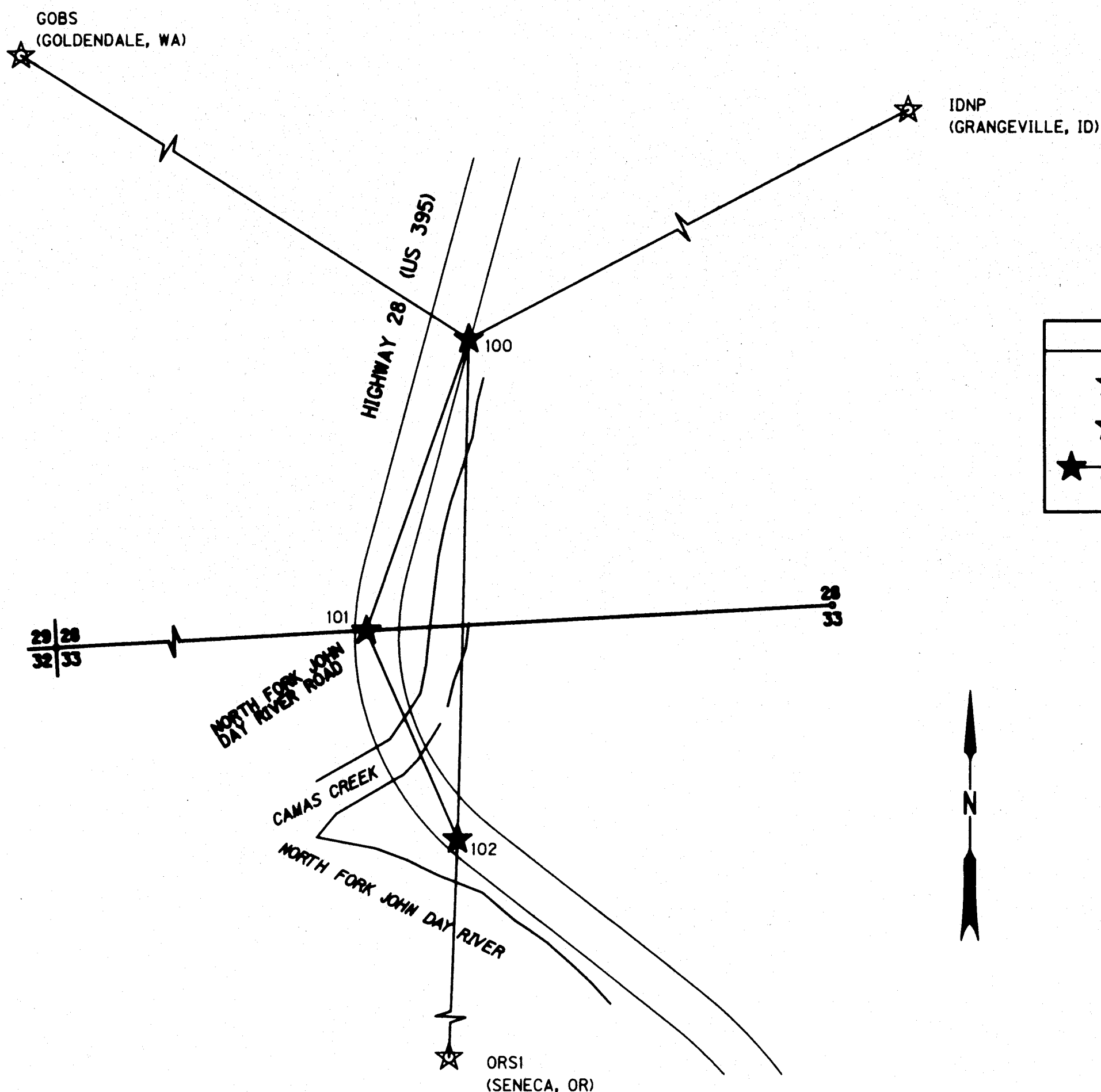
THE R/W CENTERLINE ALIGNMENT WAS RESOLVED BY HOLDING RECORD CENTERLINE ALIGNMENT DATA FROM ODOT DRG 10B-6-4. A SPLIT OF BEARING AND DISTANCE BETWEEN MONUMENTS 1011 AND 1012 WAS USED FOR CENTERLINE ON THE SOUTHERLY END, ROTATING TO A SPLIT OF BEARING AND DISTANCE BETWEEN 1013 AND 1014 ON THE NORTH END. A MEANED ADJUSTMENT WAS THEN MADE BY USING THE BEST-FIT OF 1005, 1015, 1013, 1014, 1011, AND 1012. AVERAGE RESIDUAL WHEN COMPARED TO RECORD PROJECT LESS THAN 0.5 FEET. CALCULATED CENTERLINE FITS CONSTRUCTED BACK OF BRIDGE PAVEMENT SEAT.

THE BASIS OF BEARINGS WAS ESTABLISHED BY STATIC GPS OBSERVATION FROM NGS CORS STATIONS GOBS, IDNP, AND ORSI. BEARINGS SHOWN ARE STATE PLANE GRID.

THIS SURVEY UTILIZES A LOCAL DATUM PROJECTION (LDP) WHICH IS RELATIVE TO THE OREGON COORDINATE SYSTEM (OCS) OF 1983 NORTH ZONE WITH RESPECT TO THE LOCAL LATITUDE AND GROUND ELEVATION. THE LDP COORDINATES DEFINE TRUE GROUND DISTANCES.

SURVEY WORK WAS PERFORMED BY WHITE SHIELD, INC. (WSI) SURVEY CREWS FROM NOVEMBER 2006 TO MARCH 2007. A CONTROL NETWORK WAS SET AND A "LEAST SQUARES" ADJUSTMENT WAS PERFORMED ON THE NETWORK POINT COORDINATES. THE RECOVERED MONUMENTS WERE THEN SURVEYED FROM THE CONTROL NETWORK. THE SURVEY EQUIPMENT USED WAS A TOPCON GTS-302 TOTAL STATION, A CARLSON EXPLORER II DATA COLLECTOR, AND A TRIMBLE GPS SYSTEM.

NETWORK POINTS SET DURING THIS SURVEY DO NOT REPRESENT PROPERTY LINES OR R/W LINES.



LEGEND

- ☆ CORS GPS STATION
- ★ SET GPS STATION
- ☆—☆ LINES OF OBSERVATION

BASIS OF BEARING AND CONTROL NETWORK SCHEMATIC

NETWORK POINT COORDINATE TABLE

PT. NO.	LDP NORTHING	LDP EASTING	DATE	DESCRIPTION
100	494389.538	8593295.537	12-2006	SET 1.5" ALUMINUM CAP "WHITE SHIELD" ON 5/8"X30" REBAR WITH SMALL CONCRETE COLLAR
101	493860.160	8593108.932	12-2006	SET 1.5" ALUMINUM CAP "WHITE SHIELD" ON 5/8"X30" REBAR WITH SMALL CONCRETE COLLAR
102	493482.750	8593275.260	12-2006	SET 1.5" ALUMINUM CAP "WHITE SHIELD" ON 5/8"X30" REBAR WITH SMALL CONCRETE COLLAR
GOBS	792263.547	8123753.986	12-2006	NGS CORS GPS SITE
IDNP	859094.505	9317704.437	12-2006	NGS CORS GPS SITE
ORSI	184824.445	8582265.075	12-2006	NGS CORS GPS SITE

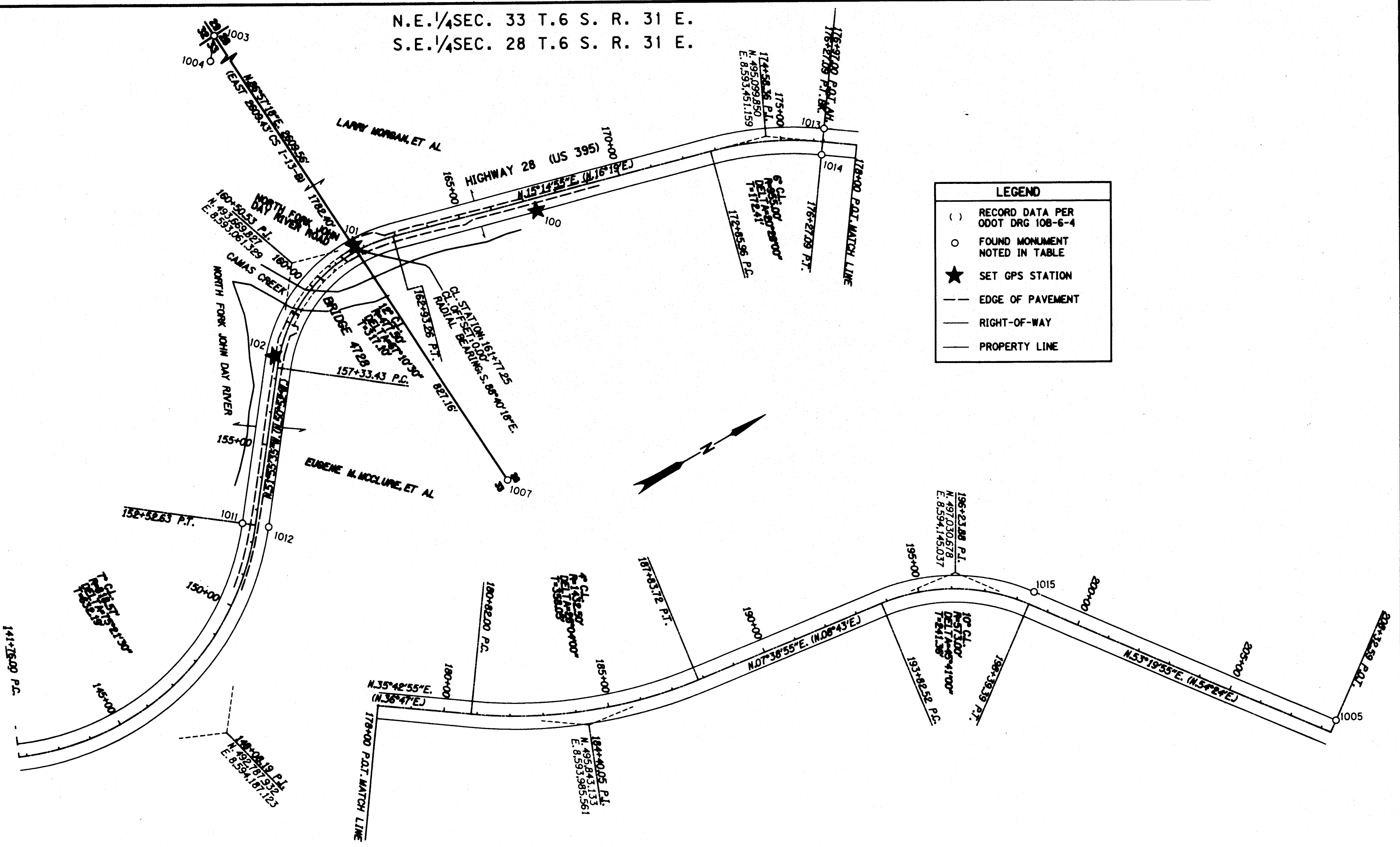
REGISTERED PROFESSIONAL LAND SURVEYOR
Michael P. Lejeune
 OREGON
 JAN. 21, 1992
 MICHAEL P. LEJEUNE
 2838
 EXPIRES 12/31/08

OREGON DEPARTMENT OF TRANSPORTATION
 HORIZONTAL CONTROL, RECOVERY AND RETRACEMENT MAP
 HIGHWAY 28 AT CAMAS CREEK
 UMATILLA COUNTY

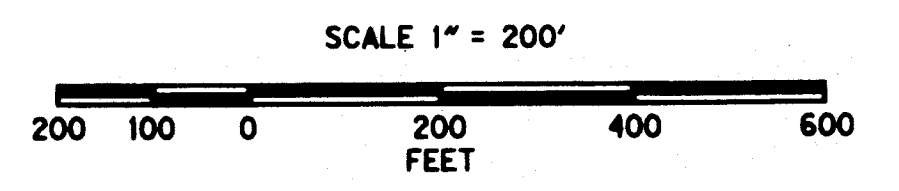
FOR ODOT REGION 5, DISTRICT 13
 3014 ISLAND AVENUE
 LA GRANDE, OR 97850

OCTOBER 12, 2007
 RECEIVED BY
 Umatilla County Surveyor
 SCALE: 1" = 200'
 SHEET 1 OF 2

N.E. 1/4 SEC. 33 T.6 S. R. 31 E.
S.E. 1/4 SEC. 28 T.6 S. R. 31 E.



LEGEND	
()	RECORD DATA PER ODOT DRG 108-6-4
○	FOUND MONUMENT NOTED IN TABLE
★	SET GPS STATION
---	EDGE OF PAVEMENT
---	RIGHT-OF-WAY
---	PROPERTY LINE



RECOVERED MONUMENT LIST

PT. NO.	LDP NORTHING	LDP EASTING	STATION	OFFSET	DATE	DESCRIPTION & REFERENCE DOCUMENTS
1003	493766.567	8591348.164	161+48.50	1781.30 LT	12-2006	FD 1/2" IRON PIPE, CS I-13-B
1004	493717.957	8591409.558	161+37.46	1722.34 LT	12-2006	FD 3/8" IRON ROD, CS I-13-B
1005	497799.720	8595111.308	208+32.34	39.82 LT	12-2006	FD 3" BUREAU OF PUBLIC ROADS BRASS CAP, CS H-229-AX
1007	493905.185	8593954.035	154+92.91	735.79 RT	12-2006	FD 2" IRON PIPE, CS I-13-B
1011	493146.570	8593664.856	152+52.74	39.74 LT	12-2006	FD 3" BUREAU OF PUBLIC ROADS BRASS CAP
1012	493209.587	8593714.229	152+52.73	40.32 RT	12-2006	FD 3" BUREAU OF PUBLIC ROADS BRASS CAP
1013	495263.686	8593519.510	176+97.52	40.14 LT	12-2006	FD 3" BUREAU OF PUBLIC ROADS BRASS CAP
1014	495217.338	8593584.259	176+97.69	39.48 RT	12-2006	FD 3" BUREAU OF PUBLIC ROADS BRASS CAP
1015	497206.916	8594315.117	198+39.70	39.79LT	12-2006	FD 3" BUREAU OF PUBLIC ROADS BRASS CAP, CS H-229-AX

REGISTERED PROFESSIONAL LAND SURVEYOR
Michael P. Lejeune
OREGON
JAN. 21, 1992
MICHAEL P. LEJEUNE
2836
EXPIRES 12/31/08

OREGON DEPARTMENT OF TRANSPORTATION
HORIZONTAL CONTROL, RECOVERY AND RETRACEMENT MAP
HIGHWAY 28 AT CAMAS CREEK
UMATILLA COUNTY

FOR ODOT REGION 5, DISTRICT 13
3014 ISLAND AVENUE
LA GRANDE, OR 97850

OCTOBER 12, 2007
SCALE: 1" = 200'
SHEET 2 OF 2