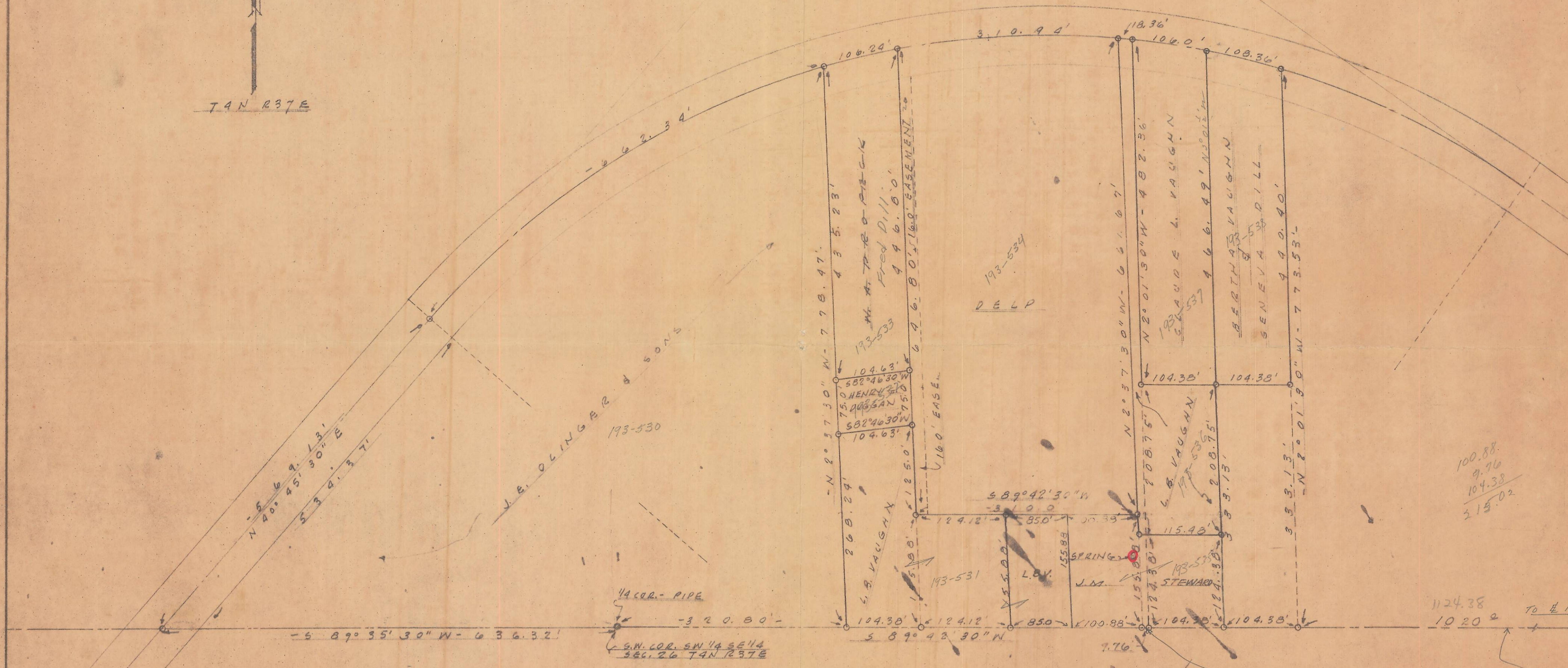


A 84°13'
 T 1036.0'
 R 1145.93'
 D - 5°



N 40° 45' 30\"/>

V.E. OLINGER & SONS
 193-530

M. AT P. R. O. P. R. C. I. K
 Fred Dill
 496.00'
 646.80' EASEMENT

193-534
 DEEP

SCAUP L. VAUGHN
 466.49' ASPHALT
 BERTH VAUGHN
 GENEVA DILL
 490.40'

100.88
 9.76
 104.38
 215.02

S 89° 35' 30\"/>

S.W. COR. SW 14 SE 14
 SEC. 26 T4N R37E

1124.38
 1020.2 To Highway

This strip was
 Adjusted to leave
 Required distance here
 G.M.N.

07-97-B

SCALE 1" = 100.0'

C. H. Storms & Associates
 CONSULTING ENGINEERS
 304 DENNY BUILDING TELEPHONE 4170 WALLA WALLA, WASH.

Structural	A PLAT FOR	
Hydraulic	L.B. VAUGHAN, ETAL	
Sanitary	DESIGNS	
Designs	SEC. 26 T4N R37E W1	
Land Surveys	Date	10-4-49
House Plans	Drawn By	J.O.B.
Blue Prints	Checked By	
Estimates		917