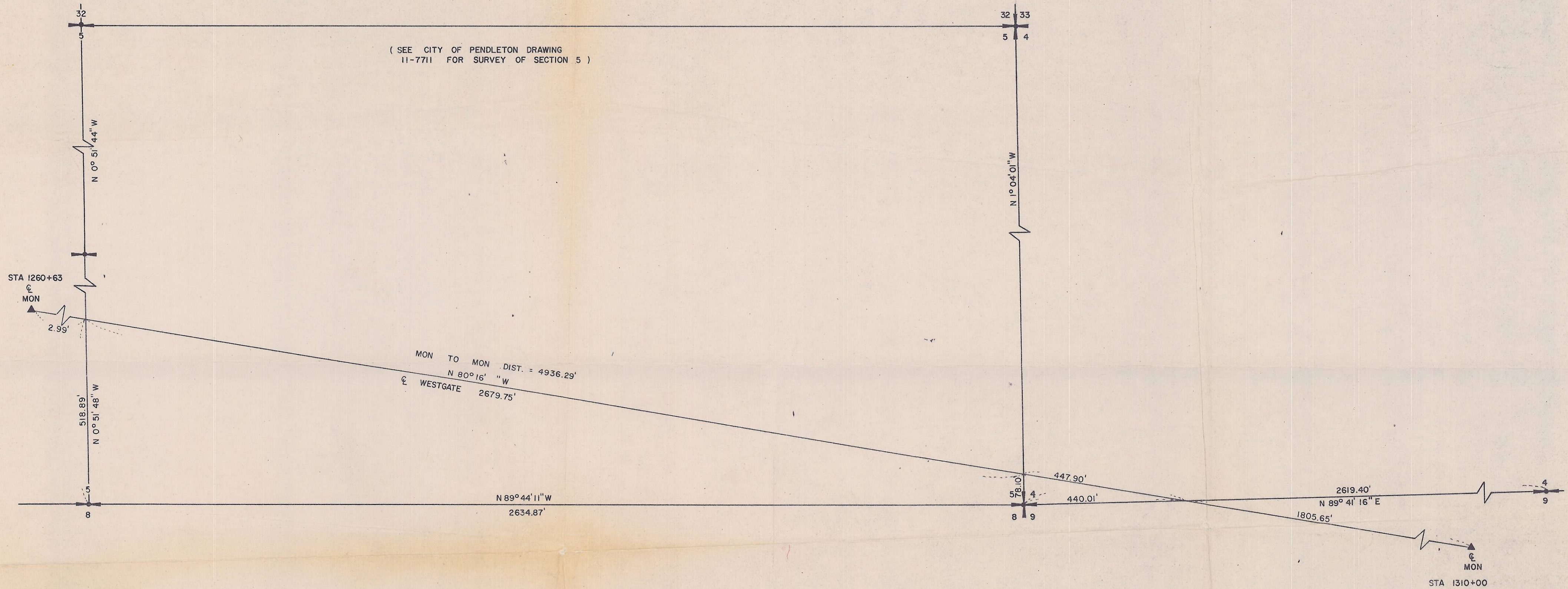


( SEE CITY OF PENDLETON DRAWING  
11-7711 FOR SURVEY OF SECTION 5 )



24-7713

NOTE: ALL BEARINGS SHOWN ARE FROM TRUE NORTH AS TIED TO PENDLETON COMMUNITY HOSPITAL TRIANGULATION STA. 3  
 ☉ MONUMENTS ARE BRASS CAPS IN VALVE BOXES

20325

CITY OF PENDLETON ENGINEERING DEPT.		
SURVEY OF WESTGATE ☉ MONS		
DATE: 2-6-75	1" = 200'	SHEET 1 OF 1
DN. RLV	CKD.	

06-629-B