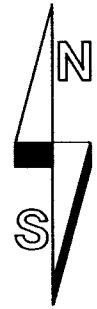


RECORD OF SURVEY

LOCATED IN SECTIONS 12 AND 13,
T3 S., R31E., W.M.,
UMATILLA COUNTY, OREGON.



SCALE: 1"=300 FEET
0 150 300 600

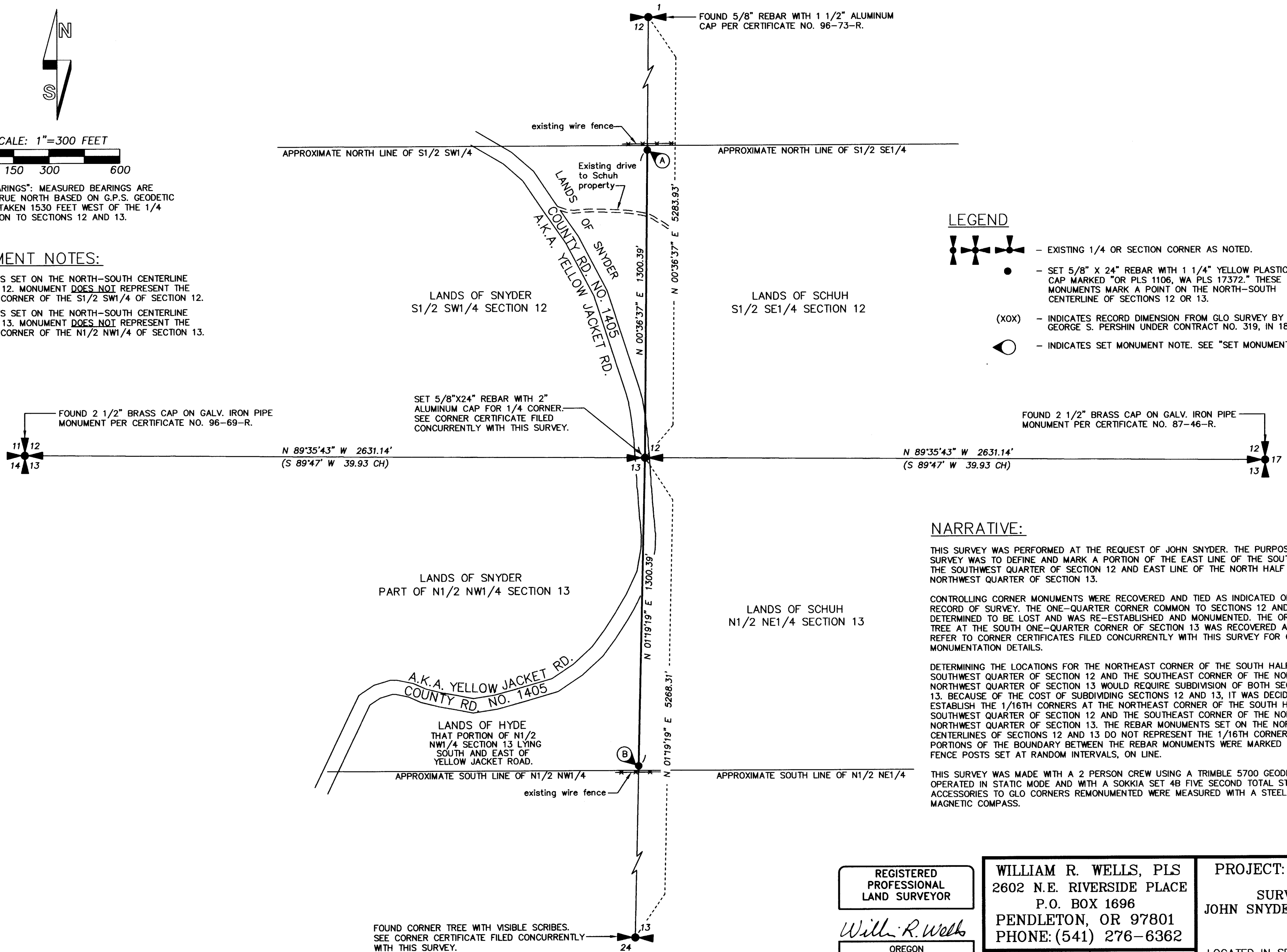
"BASIS OF BEARINGS": MEASURED BEARINGS ARE ROTATED TO TRUE NORTH BASED ON G.P.S. GEODETIC OBSERVATION TAKEN 1530 FEET WEST OF THE 1/4 CORNER COMMON TO SECTIONS 12 AND 13.

SET MONUMENT NOTES:

- (A) - MONUMENT IS SET ON THE NORTH-SOUTH CENTERLINE OF SECTION 12. MONUMENT DOES NOT REPRESENT THE NORTHEAST CORNER OF THE S1/2 SW1/4 OF SECTION 12.
- (B) - MONUMENT IS SET ON THE NORTH-SOUTH CENTERLINE OF SECTION 13. MONUMENT DOES NOT REPRESENT THE SOUTHEAST CORNER OF THE N1/2 NW1/4 OF SECTION 13.

LEGEND

- EXISTING 1/4 OR SECTION CORNER AS NOTED.
- SET 5/8" X 24" REBAR WITH 1 1/4" YELLOW PLASTIC CAP MARKED "OR PLS 1106, WA PLS 17372." THESE MONUMENTS MARK A POINT ON THE NORTH-SOUTH CENTERLINE OF SECTIONS 12 OR 13.
- (XOX) - INDICATES RECORD DIMENSION FROM GLO SURVEY BY GEORGE S. PERSHIN UNDER CONTRACT NO. 319, IN 1879.
- INDICATES SET MONUMENT NOTE. SEE "SET MONUMENT NOTES".



NARRATIVE:

THIS SURVEY WAS PERFORMED AT THE REQUEST OF JOHN SNYDER. THE PURPOSE OF THE SURVEY WAS TO DEFINE AND MARK A PORTION OF THE EAST LINE OF THE SOUTH HALF OF THE SOUTHWEST QUARTER OF SECTION 12 AND EAST LINE OF THE NORTH HALF OF THE NORTHWEST QUARTER OF SECTION 13.

CONTROLLING CORNER MONUMENTS WERE RECOVERED AND TIED AS INDICATED ON THIS RECORD OF SURVEY. THE ONE-QUARTER CORNER COMMON TO SECTIONS 12 AND 13 WAS DETERMINED TO BE LOST AND WAS RE-ESTABLISHED AND MONUMENTED. THE ORIGINAL CORNER TREE AT THE SOUTH ONE-QUARTER CORNER OF SECTION 13 WAS RECOVERED AND MONUMENTED. REFER TO CORNER CERTIFICATES FILED CONCURRENTLY WITH THIS SURVEY FOR CORNER MONUMENTATION DETAILS.

DETERMINING THE LOCATIONS FOR THE NORTHEAST CORNER OF THE SOUTH HALF OF THE SOUTHWEST QUARTER OF SECTION 12 AND THE SOUTHEAST CORNER OF THE NORTH HALF OF THE NORTHWEST QUARTER OF SECTION 13 WOULD REQUIRE SUBDIVISION OF BOTH SECTIONS 12 AND 13. BECAUSE OF THE COST OF SUBDIVIDING SECTIONS 12 AND 13, IT WAS DECIDED NOT TO ESTABLISH THE 1/16TH CORNERS AT THE NORTHEAST CORNER OF THE SOUTH HALF OF THE SOUTHWEST QUARTER OF SECTION 12 AND THE SOUTHEAST CORNER OF THE NORTH HALF OF THE NORTHWEST QUARTER OF SECTION 13. THE REBAR MONUMENTS SET ON THE NORTH-SOUTH CENTERLINES OF SECTIONS 12 AND 13 DO NOT REPRESENT THE 1/16TH CORNER LOCATIONS. PORTIONS OF THE BOUNDARY BETWEEN THE REBAR MONUMENTS WERE MARKED WITH STEEL FENCE POSTS SET AT RANDOM INTERVALS, ON LINE.

THIS SURVEY WAS MADE WITH A 2 PERSON CREW USING A TRIMBLE 5700 GEODETIC G.P.S. SYSTEM OPERATED IN STATIC MODE AND WITH A SOKKIA SET 4B FIVE SECOND TOTAL STATION. ACCESSORIES TO GLO CORNERS REMONUMENTED WERE MEASURED WITH A STEEL TAPE AND MAGNETIC COMPASS.

JSNYDERGNSURV

REGISTERED
PROFESSIONAL
LAND SURVEYOR

William R. Wells
OREGON
JULY 22, 1977
WILLIAM R. WELLS
1106
RENEWS 6/30/06

WILLIAM R. WELLS, PLS
2602 N.E. RIVERSIDE PLACE
P.O. BOX 1696
PENDLETON, OR 97801
PHONE: (541) 276-6362

DATE: 09/05 DR. BY: JMW
CK. BY: WRW NO: 05-1025

PROJECT:
SURVEY FOR:
JOHN SNYDER & BOB HYDE

LOCATED IN SECTIONS 12 AND 13,
T3 S., R31E., W.M.,
UMATILLA COUNTY, OREGON.

Umatilla County Surveyor

Date 9-05

Received by *KK*

05-166-B