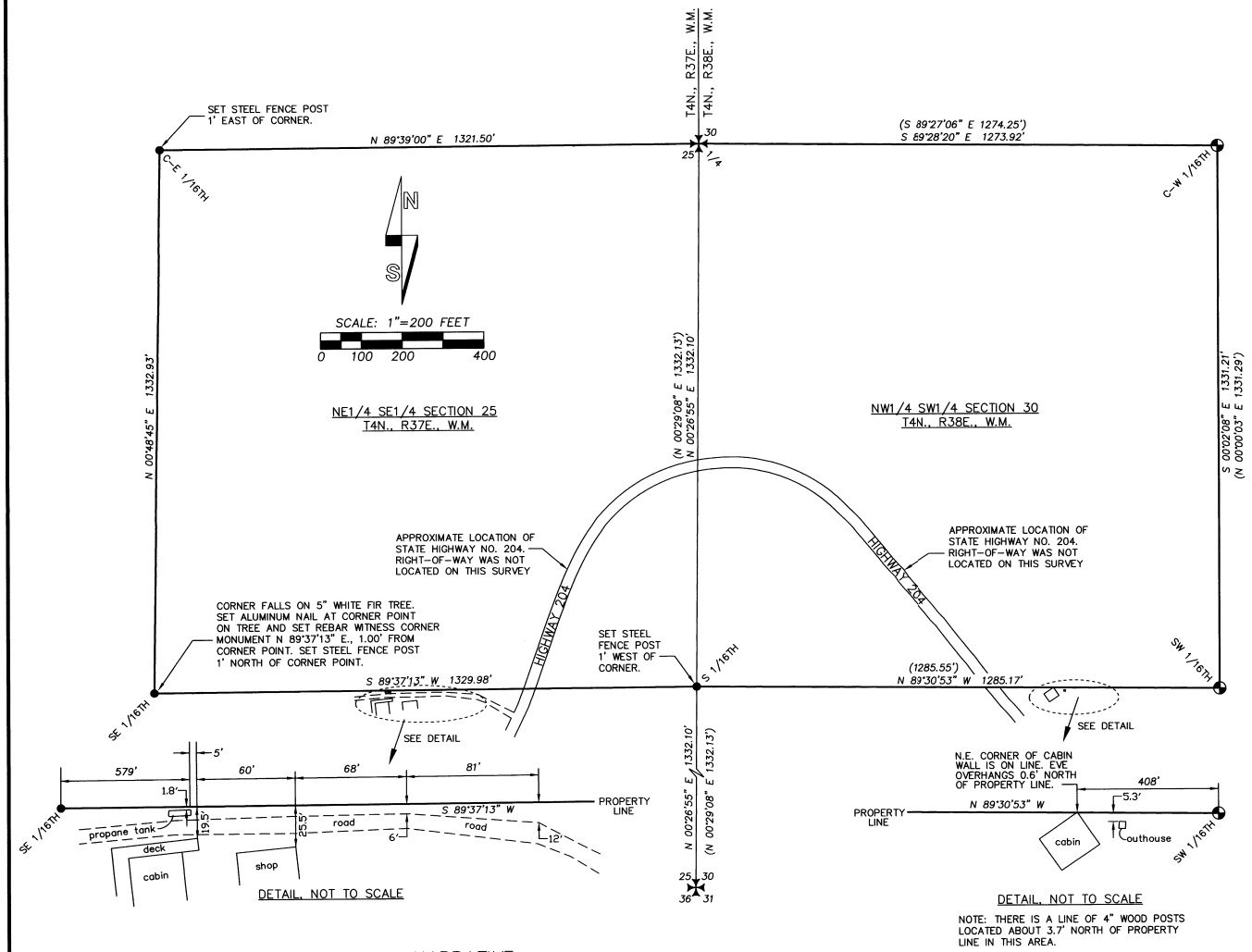


# RECORD OF SURVEY

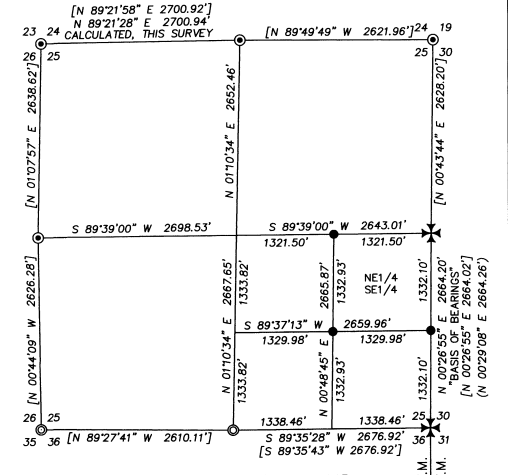


### NARRATIVE:

THIS SURVEY WAS MADE AT THE REQUEST OF DON RITCHIE OF HILL CAMP, INC. THE PURPOSE OF THE SURVEY WAS TO RECOVER OR ESTABLISH CORNER MONUMENTS ON THE OVERALL BOUNDARY OF THE NE 1/4 OF THE SE 1/4 OF SECTION 25, T4N., R37E., W.M., AND THE NW 1/4 OF THE SW 1/4 OF SECTION 30, T4N., R38E., W.M. STATE HIGHWAY NO. 204 PASSES THROUGH THE SURVEYED TRACT. THE RIGHT-OF-WAY LINES OF SAID HIGHWAY NO. 204 WERE NOT DETERMINED ON THIS SURVEY.

THE NORTHWEST, NORTHEAST AND SOUTHEAST CORNERS OF THE NW 1/4 OF THE SW 1/4 OF SECTION 30 WERE ESTABLISHED ON SURVEY NO. 95-179-B, OR RECOVERED ON THE 1939 OTIS GOULD GLO SURVEY. THE NORTHWEST, SOUTHWEST AND SOUTHEAST CORNERS OF THE NE 1/4 OF THE SE 1/4 OF SECTION 25, T4N., R37E., W.M. WERE ESTABLISHED BY THIS SURVEY. IN BREAKING DOWN THE SE 1/4 OF SECTION 25, T4N., R37E., W.M., WE TIED THE EAST 1/4 CORNER, THE SOUTHEAST CORNER AND THE SOUTH 1/4 CORNER OF SECTION 25 BY DIRECT MEASUREMENT. THE BREAKDOWN OF SECTION 25 WAS THEN CALCULATED WITH REFERENCE TO MEASUREMENTS MADE AND REPORTED ON SURVEY NO. 93-064-C.

A CLOSED TRAVERSE WAS RUN AROUND THE PERIMETER OF THE PROPERTY WITH A SOKKIA SET 48, FIVE SECOND TOTAL STATION. THE TRAVERSE WAS THEN ADJUSTED BY "LEAST SQUARES" METHODS. WE TIED DOWN THE TRAVERSE BY GPS METHODS AND ALSO ESTABLISHED GPS CONTROL POINTS TO TIE IN THE EAST 1/4 CORNER, THE SOUTHEAST CORNER AND THE SOUTH 1/4 CORNER OF SECTION 25 BY TOTAL STATION METHODS. GPS MEASUREMENTS WERE MADE WITH A TRIMBLE 5700 GEODETIC GPS SYSTEM OPERATED IN REAL TIME KINEMATIC MODE.



### LEGEND

- - SET 5/8" BY 30" IRON REBAR WITH 1 1/4" YELLOW PLASTIC CAP CAP MARKED "OR PLS 1106 WA PLS 17372".
- ⊕ - FOUND 2 1/2" ALUMINUM CAP ON ALUMINUM PIPE ESTABLISHED ON SURVEY NO. 95-179-B.
- ⊙ - PUBLIC LAND SURVEY CORNER. MONUMENTS ARE 2 1/2" BRASS CAPS ON GALV. IRON PIPES. REMONUMENTED ON SURVEY NO. 91-75-C. THESE MONUMENTS ARE ALSO REFERRED TO ON SURVEY NO. 93-064-C.
- ⊕ - FOUND PUBLIC LAND SURVEY CORNER. MONUMENTS ARE 2 1/2" BRASS CAPS ON GALV. IRON PIPES FROM 1939 GLO SURVEY BY OTIS GOULD UNLESS OTHERWISE NOTED. THESE MONUMENTS ARE ALSO REFERRED TO ON SURVEY NO. 93-064-C.
- ⊙ - PUBLIC LAND SURVEY CORNER. MONUMENTS ARE 2 1/2" BRASS CAPS ON GALV. IRON PIPES FROM SURVEY NO. 93-064-C.
- (XOX) - INDICATES RECORD DIMENSION FROM SURVEY NO. 95-179-B.
- [XOX] - INDICATES RECORD DIMENSION FROM SURVEY NO. 93-064-C.

**RECEIVED BY**  
 Umatilla County Surveyor  
 Date: 8-09  
 Rec'd by: KK  
 No. 04-188-B HILLCADJ

REGISTERED  
PROFESSIONAL  
LAND SURVEYOR  
  
*Will. R. Wells*  
 OREGON  
 JULY 22, 1977  
 WILLIAM R. WELLS  
 1106  
 RENEWS 6/30/06

WILLIAM R. WELLS, PLS  
 2602 N.E. RIVERSIDE PLACE  
 P.O. BOX 1696  
 PENDLETON, OR 97801  
 PHONE: (541) 276-6362

DATE: 07/04 DR. BY: jmw/wrw  
 CK. BY: WRW NO: 04-934

PROJECT:  
 SURVEY FOR:  
 HILL CAMP, INC.  
 LOCATED IN THE NE 1/4 OF THE SE 1/4 OF SECTION 25, T4N., R37E., W.M., AND THE NW 1/4 OF THE SW 1/4 OF SECTION 30, T4N., R38E., W.M., UMATILLA COUNTY, OREGON.