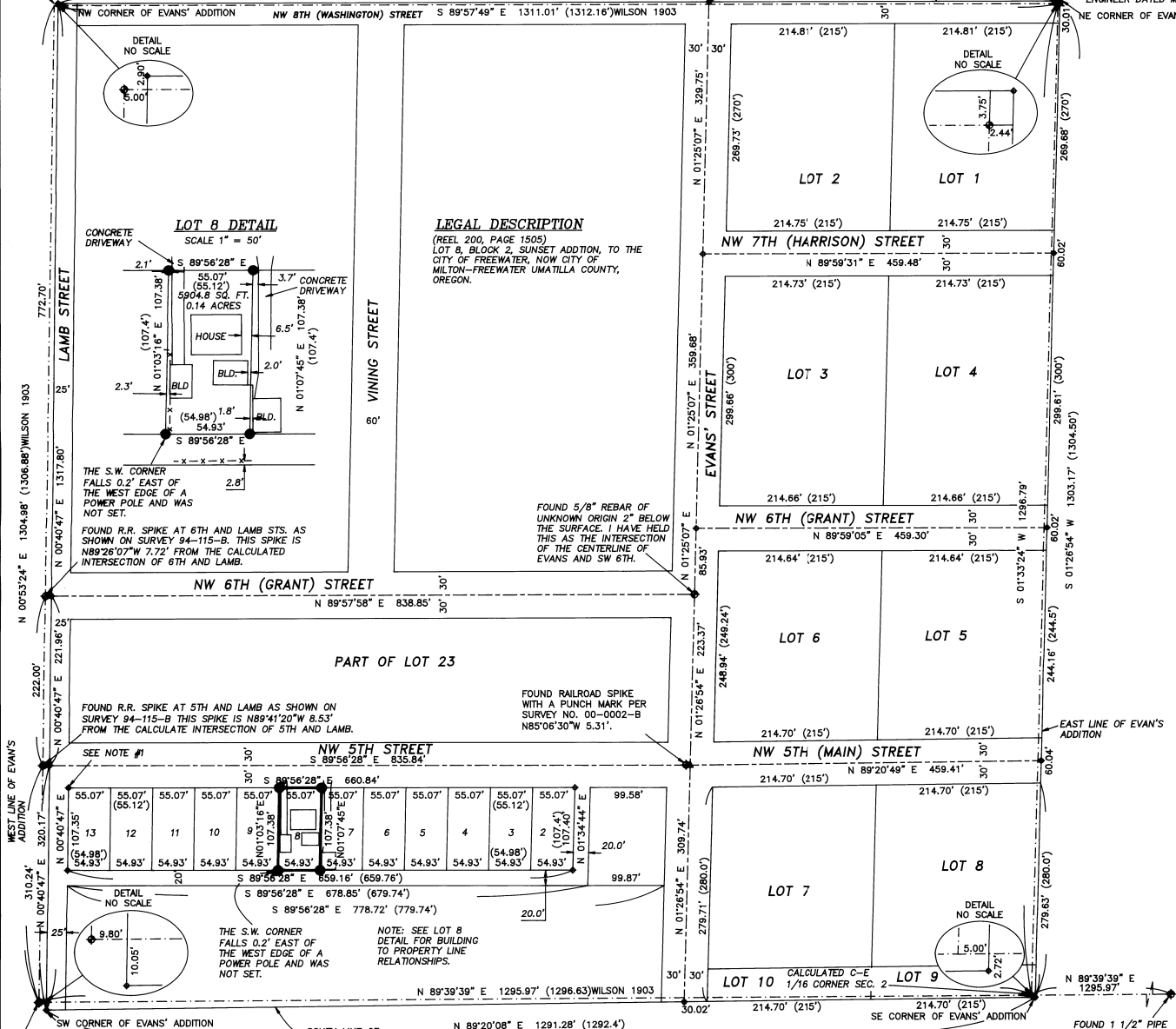


3" BRASS CAP IN MON. CASE STAMPED "C-N 1/16 S.2" AT 8TH AND LAMB STS. AS SHOWN ON SURVEY 94-115-B. N.W. COR. OF THE S.W. 1/4 OF THE N.E. 1/4 OF S.2. THE POSITION OF THE NW CORNER OF EVAN'S ADDITION AS COMPUTED FROM INFORMATION SHOWN ON THE MAP FILED IN THE OFFICE OF THE MILTON-FREEWATER CITY ENGINEER DATED MARCH 17, 1902 BY L.A. WILSON, BEARS N60°06'28"E 5.81 FEET.
N 89°59'57" E 1308.50' (1309.6')

NORTH LINE OF EVAN'S ADDITION 459.65'

3" BRASS CAP IN CASE AT N. MAIN AND 8TH ST. AS SHOWN ON SURVEY 94-123-B. N.E. COR. OF THE S.W. 1/4 OF THE N.E. 1/4 OF S. 2. THE POSITION OF THE NE CORNER OF EVAN'S ADDITION AS COMPUTED FROM INFORMATION SHOWN ON THE MAP FILED IN THE OFFICE OF THE MILTON-FREEWATER CITY ENGINEER DATED MARCH 17, 1902 BY L.A. WILSON, BEARS N34°03'24"E 4.53 FEET.
NE CORNER OF EVAN'S ADDITION



LEGAL DESCRIPTION
(REEL 200, PAGE 1505)
TO THE LOT 8, BLOCK 2, SUNSET ADDITION, TO THE CITY OF FREEWATER, NOW CITY OF MILTON-FREEWATER UMATILLA COUNTY, OREGON.

BASIS OF BEARING
SOUTH 00°54'48" WEST BETWEEN THE MONUMENT AT THE CENTER 1/4 CORNER OF SECTION 2 AND THE MONUMENT AT THE INTERSECTION OF 5TH AND LAMB STS AS SHOWN ON SURVEY 94-115-B.

- LEGEND**
- DEED LINE
 - FENCE
 - ⊙ FOUND SURVEY MONUMENT AS NOTED
 - ▲ FOUND "MAG" NAIL AND WASHER STAMPED "OR 02820 WA 19619" ATTACHED. PER SURVEY 03-62-B
 - SET 5/8" X 30" IRON REBAR WITH A YELLOW PLASTIC CAP STAMPED "TOMKINS SURVEYING" ATTACHED.
 - ⊙ CALCULATED POSITION NOTHING FOUND OR SET.
 - (XOX) RECORD DIMENSION PER THE PLAT OF EVAN'S OR SUNSET ADDITION TO THE TOWN OF MILTON
 - - - CENTERLINE
 - BOUNDARY OR BLOCK LINES OF EVAN'S ADDITION PER THE MAP OF SURVEY ON BY L.A. WILSON, CITY ENGINEER DATED MARCH 17, 1903 ON FILE IN THE MILTON-FREEWATER CITY ENGINEERS OFFICE.

NARRATIVE
THIS SURVEY WAS PERFORMED AT THE REQUEST OF ELAIN MORRIS TO SURVEY AND MARK THE CORNERS OF LOT 8 OF BLOCK 2 IN SUNSET ADDITION TO THE CITY OF MILTON-FREEWATER. SUNSET ADDITION IS A PORTION OF LOT 23 OF EVAN'S ADDITION.

THE PLAT OF EVAN'S ADDITION WAS PREPARED BY L.A. WILSON CITY SURVEYOR AND DATED OCTOBER 6, 1892. THE OFFICIAL COPY OF THE PLAT FILED IN THE RECORDS OF TOWN PLAT OF UMATILLA COUNTY INDICATES THAT IT WAS FILED FOR RECORD ON DECEMBER 18, 1903. A MAP PREPARED BY L.A. WILSON CITY ENGINEER ON FILE IN THE RECORDS OF THE ENGINEERS OFFICE OF THE CITY OF MILTON-FREEWATER DATED MARCH 17, 1903 SHOWS MONUMENTS MARKING THE CORNERS OF THE SW 1/4 OF THE NE 1/4 OF SECTION 2 AND THEIR RELATIONSHIP TO THE MONUMENTS MARKING THE CORNERS OF EVAN'S ADDITION. THE MONUMENTS THAT HAVE BEEN PERPETUATED APPEAR TO BE THE CORNERS OF THE SW 1/4 OF THE NW 1/4 OF SECTION 2. I HAVE COMPUTED THE POSITIONS OF THE CORNERS OF EVAN'S ADDITION BASED ON L.A. WILSON'S 1903 MAP. THE CENTERLINE OF EVAN'S STREET WAS DETERMINED BY COMPUTING THE PROPORTIONATE LOCATION ALONG THE NORTH LINE OF EVAN'S ADDITION ACCORDING TO THE OFFICIAL PLAT. I HAVE HELD THE FOUND 5/8" IRON PIN AT THE INTERSECTION OF NW 6TH AND EVAN'S FOR THE ALIGNMENT OF THE NORTHERLY PORTION EVAN'S STREET. I HAVE HELD THE PORTION OF EVAN'S STREET SOUTH OF THE CENTERLINE OF 6TH STREET AS BEING PARALLEL WITH THE COMPUTED EAST LINE OF EVAN'S ADDITION. THE LOCATION FOR THE CENTERLINE OF WEST END OF SW 5TH AND 6TH IS BASED ON PROPORTIONATE DISTANCES ALONG THE COMPUTED WEST LINE OF EVAN'S ADDITION. LOT CORNERS WERE COMPUTED PROPORTIONATELY ALONG THE NORTH AND SOUTH LINES OF BLOCK 2.

THIS SURVEY WAS PERFORMED USING A TOPCON DUAL FREQUENCY GEODETIC GLOBAL POSITIONING SYSTEM (GPS) HAVING STANDARD ERRORS OF 1 CM ± 2 PPM TIMES BASELINE LENGTH UTILIZING RTK CAPABILITIES AND SOKKIA AUTOMATIC TOTAL STATION HAVING STANDARD ERRORS OF 0.00003" ANGULAR AND 2 MM ± 2 PPM TIMES DISTANCE. ALL MONUMENTS SHOWN WERE VISITED AT THE TIME OF THIS SURVEY.

SHEET 1 OF 1

A SURVEY OF A LOT 8 IN BLOCK 2 OF SUNSET ADDITION TO MILTON-FREEWATER, BEING LOCATED IN THE SW 1/4 OF THE NE 1/4 OF SECTION 2, TWP. 5 NORTH, RGE. 35 EAST, W.M., UMATILLA COUNTY, OREGON.
FOR: ELAINE MORRIS 311 N.E. 5TH, MILTON-FREEWATER, OR 97862

TOMKINS LAND SURVEYING, INC.		DATE
20 EAST POPLAR ST. SUITE 204		JUNE 2004
WALLA WALLA, WA. 99362		SCALE
(509) 522-4843		1" = 100'
115 WEST HERMISTON AV. SUITE 140		
HERMISTON, OR. 97838		
(541) 564-4448		
MORRIS_E.DWG		

REGISTERED PROFESSIONAL LAND SURVEYOR

Greg E. Flowers
OREGON
JUNE 30, 1997
GREG E. FLOWERS
02820LS
RENEWS 12/31/05
6/29/04

THE POSITION OF THE SE CORNER OF EVAN'S ADDITION AS COMPUTED FROM INFORMATION SHOWN ON THE MAP FILED IN THE OFFICE OF THE MILTON-FREEWATER CITY ENGINEER DATED MARCH 17, 1902 BY L.A. WILSON, BEARS S61°22'41"E 5.62 FEET FROM THE MATHEMATICAL POSITION OF THE CENTER EAST 1/16 CORNER OF SECTION 2.

RECEIVED BY
Umatilla County Surveyor
Date 7-04
Rec'd By RL
No. 04-128-B

FOUND R.R. IRON IN A MON. CASE AT THE CENTER 1/4 CORNER OF SECTION 2 AS SHOWN ON SURVEY 94-115-B. THE POSITION OF THE SW CORNER OF EVAN'S ADDITION AS COMPUTED FROM INFORMATION SHOWN ON THE MAP FILED IN THE OFFICE OF THE MILTON-FREEWATER CITY ENGINEER DATED MARCH 17, 1902 BY L.A. WILSON, BEARS S37°27'47"E 12.60 FEET.

NOTES
1. FOUND A 1" IRON PIPE OF UNKNOWN ORIGIN, WITH A COUPLING ATTACHED. S88°57'04"W 0.54' FROM THE N.W. CORNER OF BLOCK 2 OF SUNSET ADDITION. I DID NOT HOLD IT FOR THIS SURVEY.

THE S.W. CORNER FALLS 0.2' EAST OF A POWER POLE AND WAS NOT SET.
FOUND R.R. SPIKE AT 6TH AND LAMB STS. AS SHOWN ON SURVEY 94-115-B. THIS SPIKE IS N89°26'07"W 7.72' FROM THE CALCULATED INTERSECTION OF 6TH AND LAMB.

FOUND 5/8" REBAR OF UNKNOWN ORIGIN 2" BELOW THE SURFACE. I HAVE HELD THIS AS THE INTERSECTION OF THE CENTERLINE OF EVAN'S AND SW 6TH.

FOUND R.R. SPIKE AT 5TH AND LAMB AS SHOWN ON SURVEY 94-115-B. THIS SPIKE IS N89°41'20"W 8.53' FROM THE CALCULATE INTERSECTION OF 5TH AND LAMB.

FOUND RAILROAD SPIKE WITH A PUNCH MARK PER SURVEY NO. 00-0002-B N85°06'30"W 5.31'.

NOTE: SEE LOT 8 DETAIL FOR BUILDING TO PROPERTY LINE RELATIONSHIPS.