

NORTH 730-592.39
EAST 2-390-507.45
SET FROM R.R. TIES

NORTH 730-736.72
EAST 2-395-726.93
FND. MOUND OF STONE

R.R. C
Δ = 26°17'30"
D = 2°00'45"
Lc = 973.99 ft.
Ls = 332.25 ft.

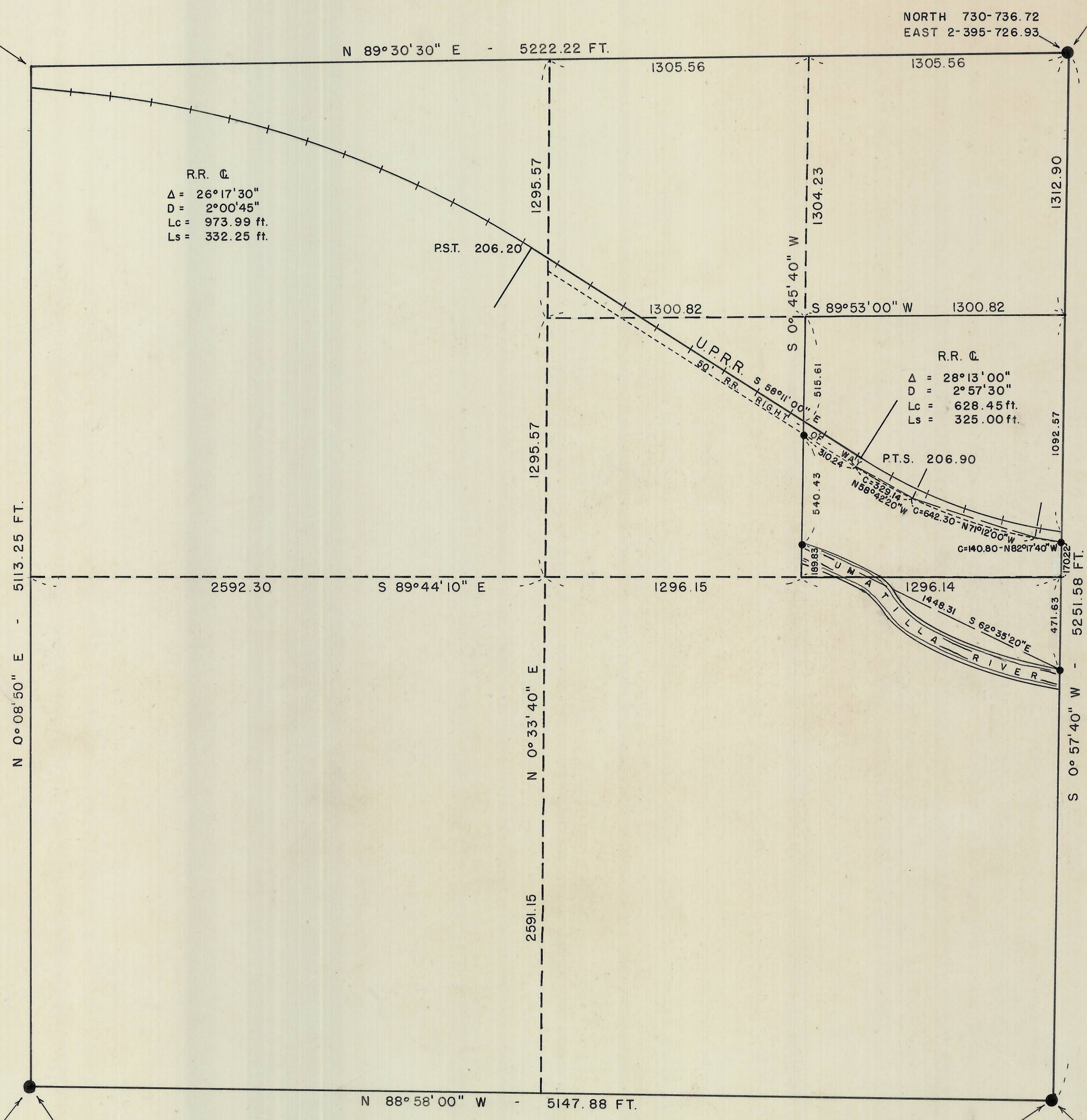
R.R. C
Δ = 28°13'00"
D = 2°57'30"
Lc = 628.45 ft.
Ls = 325.00 ft.

- INDICATES MONUMENTS FOUND
- INDICATES 5/8" IRON PIN SET

NOTE: BEARINGS ARE BASED UPON FINAL ADJUSTMENT DATA FOR U.S.C. & G.S. STATIONS "MUD" AND "VORTAC". THEY ARE TRUE BEARINGS. COORDINATES SHOWN ARE U.S.C. & G.S. "ORE. NORTH ZONE" REDUCED TO SEA LEVEL.

NORTH 725-480.56
EAST 2-390-591.68
FND. FENCE CORNER

NORTH 725-485.89
EAST 2-395-738.82
FND. MOUND OF STONE



WAYNE HARRIS CO. INC.			
SURVEY FOR			
GLINTON LEWIS			
Section 17, T.S. 2N, R. 31 E, W.M.			
SCALE	DATE	DRAWN BY	DRNG. NO.
1" = 400'	10-14-71	DAS	71-289-C

REGISTERED
OREGON
LAND SURVEYOR
David H. Krumbein
JULY 17, 1970
DAVID H. KRUMBEIN
933

03-293-B