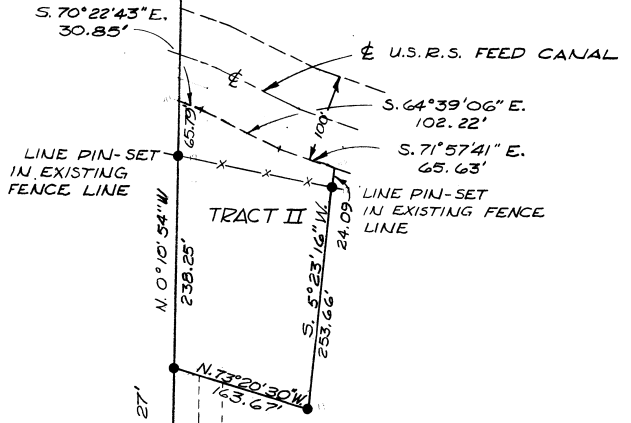
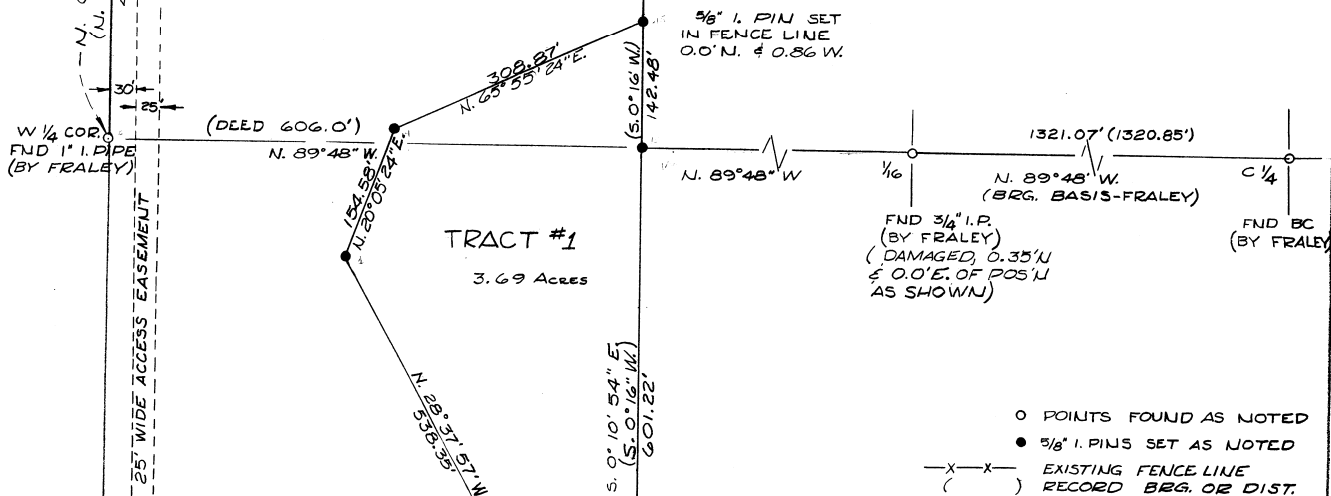


FND BC
 UMATILLA COUNTY
 SURVEYOR
 N 1/4
 S31|S32
 1973
 RPE 7728

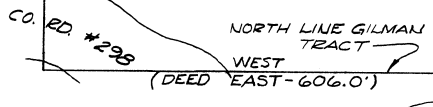


DEED REF.
 BK 174 PG. 157
 W.E. BURNETT



NOTE: BEARINGS BASED ON SURVEY OF
 N 1/2 SECTION 32, T.4N, R.29E. W.M.
 BY V.R. FRALEY.

CANAL R.O.W. DETERMINED BY
 E OF EXISTING CHANNEL.



DEED REF.
 BK 28 PG. 434



SURVEY FOR W.E. BURNETT SEC. 32, T.4N, R.29E. W.M.		WAYNE HARRIS CO. INC. ENGINEERS-SURVEYORS PENDLETON, OR	
SCALE 1"=100'	DRAWN BY J.R.	DATE 12-7-73	CHK BY GW.
		DWG. NO. 78-154B	

03-238-B

78-154B