

SEC. 21 T.1 S. R.30 E. W. M.

NARRATIVE

THE PURPOSE OF THIS SURVEY IS TO ESTABLISH NETWORK AND MAPPING FOR THE BRIDGE REPLACEMENT OVER THE NORTH FORK OF BUTTER CREEK AT VINSON.

THE SURVEY CREW CONSISTED OF, CHUCK LONGFIELD, JERRY MILLS, BOB WALTER, BRENT REYNOLDS AND TOM HUEBNER. THE CREW STARTED THE FIELDWORK ON MAY 08, 2001 AND COMPLETED IT ON SEPTEMBER 12, 2001. THIS SURVEY TOOK PLACE IN TOWNSHIP 1 SOUTH; RANGE 30 EAST; SECTION 21. THE CONTROL POINTS USED WERE EXISTING MONUMENTS FROM PREVIOUS SURVEYS.

NETWORK POINT 1 IS THE SECTION CORNER FOR SECTIONS 16, 15, 21, 22. THE FOUND 22" X 8" X 7" STONE IN A ROCK MOUND WAS REMONUMENTED (SEE SHEET 2 FOR DETAILS) WITH A 2 1/2" BRASS CAP.

NETWORK POINT 2 IS THE QUARTER CORNER FOR SECTIONS 21 & 22. THE FOUND 20" X 12" X 4" STONE IN A ROCK MOUND WAS REMONUMENTED (SEE SHEET 2 FOR DETAILS) WITH A 2 1/2" BRASS CAP.

NETWORK POINT 3 IS A SET 5/8" X 30" PIN WITH ALUMINUM CAP STAMPED "3".

NETWORK POINT 4 IS A SET 5/8" X 30" PIN WITH ALUMINUM CAP STAMPED "4".

NETWORK POINT 5 IS A FOUND 5/8" PIN AT STATION 760+76.83 P.S. 50.00' LEFT.

THE BASIS OF BEARING FOR THIS SURVEY IS THE SECTION LINE BETWEEN NETWORK POINTS 1 AND 2 (SOUTH). POINT 1 WAS ASSIGNED COORDINATES N 20000 AND E 40000. HORIZONTAL LEAST SQUARES ADJUSTMENT WAS CALCULATED IN LISCAD TO ESTABLISH NETWORK COORDINATES. THE ANGULAR RESIDUALS AVERAGED 2.4 SECONDS, WITH THE GREATEST RESIDUAL BEING 4 SECONDS. THE DISTANCE RESIDUALS AVERAGED 3.5 MM, WITH THE GREATEST RESIDUAL BEING 14 MM. THE NETWORK MEETS ODOT STANDARDS.

THE VERTICAL DATA FOR THIS PROJECT WAS OBTAINED FROM BENCH MARK R 85 NAVD 88 (609.472 METERS).

THE DATA WAS OBTAINED, EDITED AND CONVERTED TO A TERRAIN MODEL BY LISCAD (4.1). THE EQUIPMENT USED ON THIS PROJECT WAS A TCA 1800 (98-TS10), AND A LEICA LEVEL NA2002. CONFIDENCE POINTS WERE TAKEN AND INCORPORATED INTO THE PROJECT. THE CONFIDENCE EVALUATION PROVED THE MODEL WAS ACCEPTABLE PER ODOT STANDARDS.

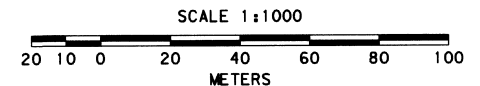
NETWORK POINT COORDINATE TABLE

PT ID	NORTHING	EASTING	DESCRIPTION
1	20000.000	40000.000	FND SEC CORNER, REMONUMENTED WITH 2 1/2" BRASS CAP MARKED "ORE STATE HWY DIV 16 15 21 22"
2	19204.665	40000.000	FND 1/4 CORNER, REMONUMENTED WITH 2 1/2" BRASS CAP MARKED "ORE STATE HWY DIV 21 22"
3	19469.269	39150.222	SET 5/8" X 30" IRON PIN WITH ALUM CAP STAMPED "3"
4	19559.481	39139.147	SET 5/8" X 30" IRON PIN WITH ALUM CAP STAMPED "4"
5	19164.171	39130.058	FND 5/8" IRON PIN WITH ALUM CAP AT STA 760+76.83 PS 50' LEFT
1000	19487.017	39322.220	FND 5/8" IRON PIN WITH ALUM CAP AT STA 775+01.06 LEFT
1001	19122.797	39195.061	FND 5/8" IRON PIN WITH ALUM CAP AT STA 758+44.80 LEFT
1002	19105.652	39169.883	FND 5/8" IRON PIN WITH ALUM CAP AT STA 758+44.80 RIGHT

REGISTERED  
PROFESSIONAL  
LAND SURVEYOR  
*K. W. Eddy*  
OREGON  
FEBRUARY 14, 1995  
KEN W. EDDY  
2129  
EXPIRES 12/31/03

LINE TABLE

AT	TO	DISTANCE	BEARING
1	3	1001.897	S 58°00'47"W
1	5	1206.403	S 46°08'44"W
2	3	890.021	N 72°42'16"W
2	4	931.108	N 67°36'00"W
3	4	90.889	N 06°59'56"W
4	5	395.414	S 01°19'02"W
4	1000	196.893	S 68°24'19"E
4	1001	440.249	S 07°17'48"E
4	1002	454.869	S 03°52'28"E



TO CONVERT METERS TO FEET DIVIDE BY 0.3048

OREGON DEPARTMENT OF TRANSPORTATION

HORIZONTAL CONTROL, RECOVERY, AND RESET MAP

NORTH FORK BUTTER CREEK BRIDGE (VINSON) RECEIVED BY  
Umatilla County Surveyor:

HEPPNER HWY

UMATILLA COUNTY

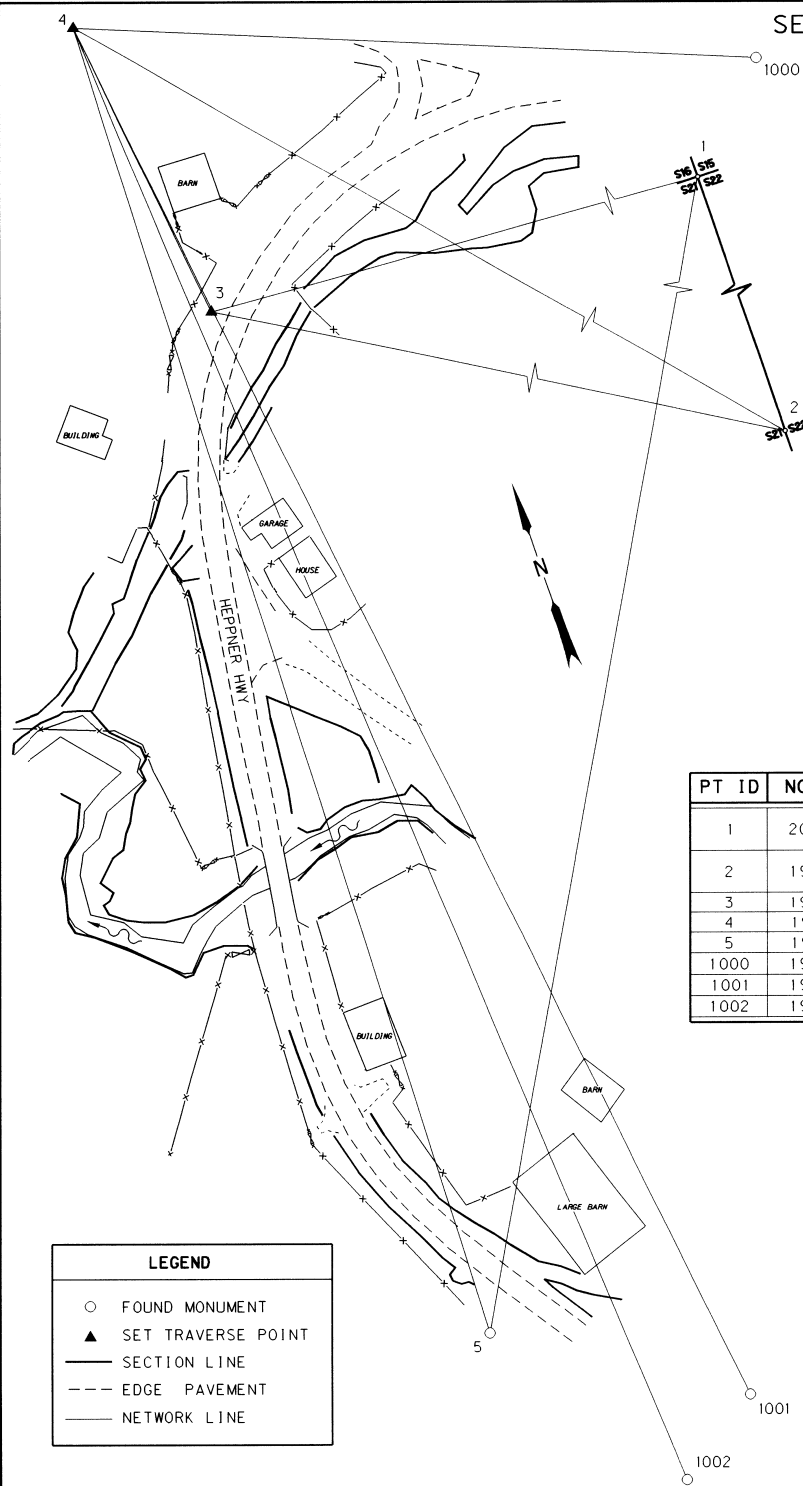
Date *4-02*  
Rec'd By *KK*  
No. *02-77-B*

FOR O.D.O.T. REGION 5

80788 KIK ROAD, HERMISTON, OR. 97838

OCTOBER 19, 2001

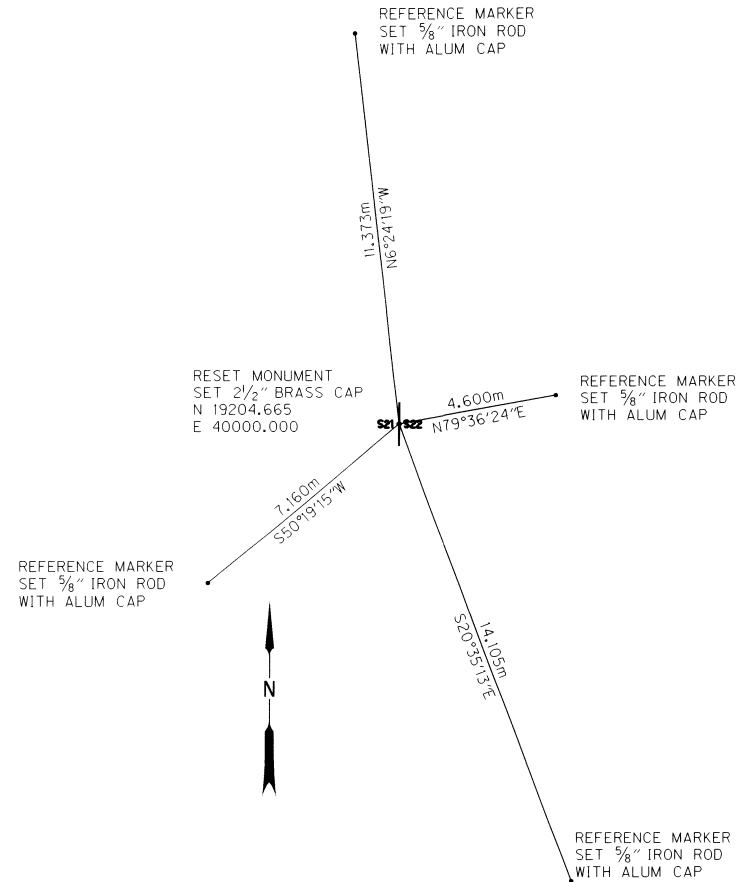
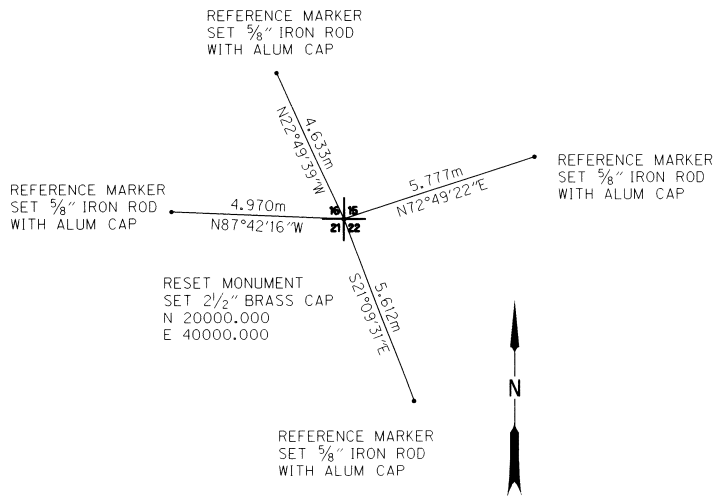
SHEET 1 OF 2



LEGEND

- FOUND MONUMENT
- ▲ SET TRAVERSE POINT
- SECTION LINE
- - - EDGE PAVEMENT
- NETWORK LINE

SEC. 21 T.1 S. R.30 E. W. M.



LEGEND	
•	SET REFERENCE MARKER
$\frac{21}{11 12}$	RESET SECTION CORNER
$\frac{21}{11 12}$	RESET 1/4 CORNER
—	OBSERVATION LINE

REGISTERED  
PROFESSIONAL  
LAND SURVEYOR

*K. W. Eddy*  
OREGON  
FEBRUARY 14, 1985  
KEN W. EDDY  
2129

EXPIRES 12/31/03

**OREGON DEPARTMENT OF TRANSPORTATION**

**RECOVERY, AND RESET MAP**

NORTH FORK BUTTER CREEK BRIDGE (VINSON) RECEIVED BY  
Umatilla County Surveyor

HEPPNER HWY Date 4-02

UMATILLA COUNTY Rec'd By RP

FOR O.D.O.T. REGION 5 80788 KIK ROAD, HERMISTON, OR. 97838

OCTOBER 19, 2001 No. 02-27-B

SHEET 2 OF 2