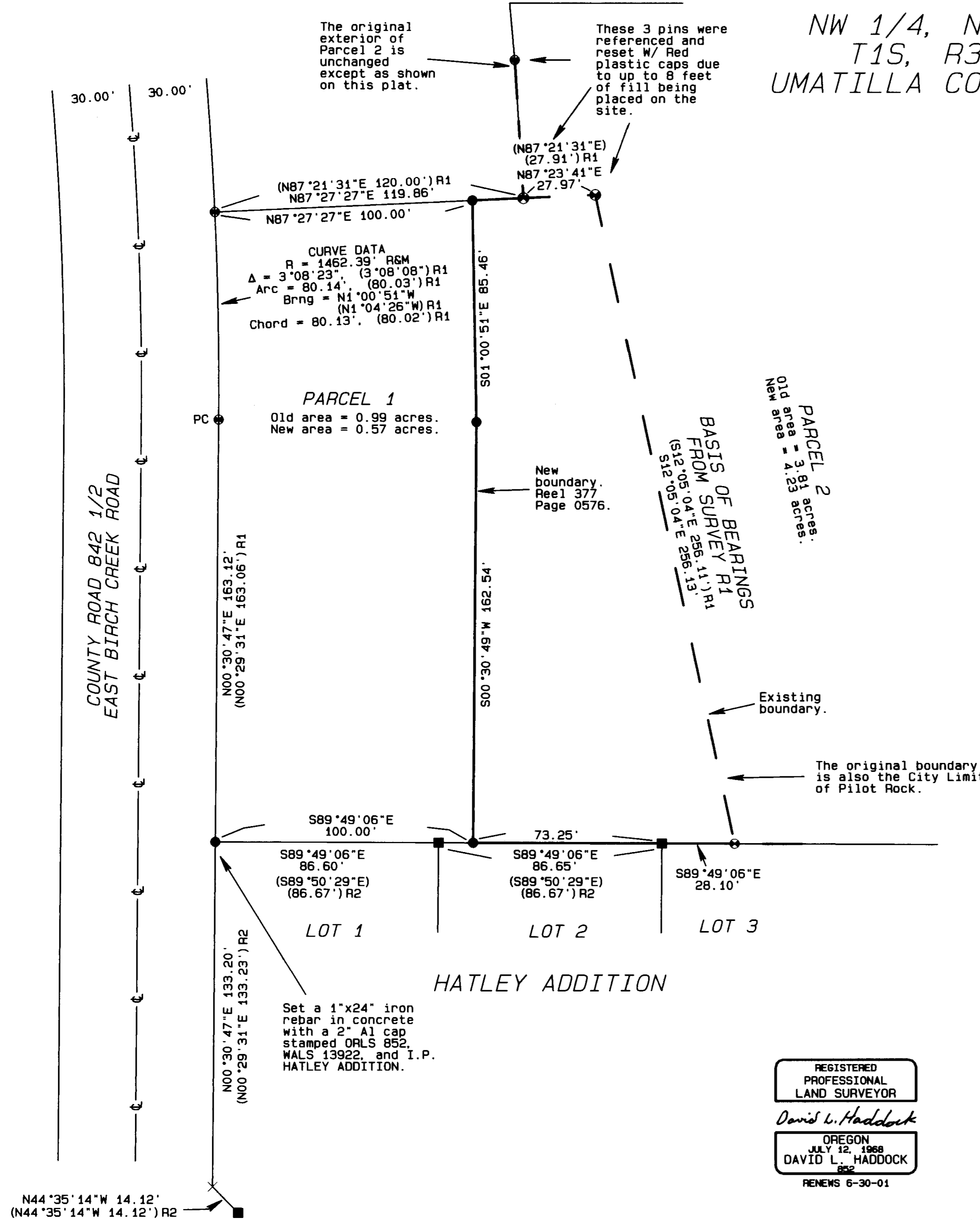
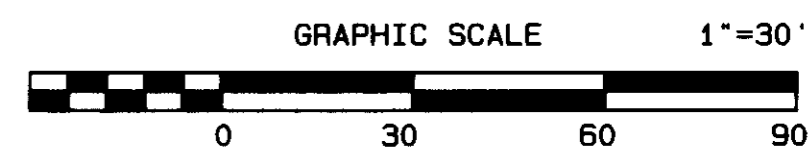
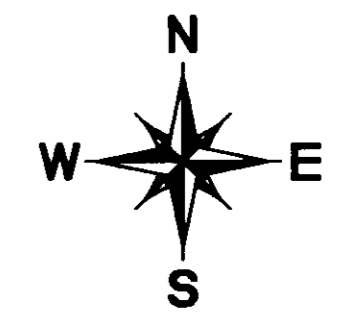


NW 1/4, NW 1/4, S21
T1S, R32E, W.M.
UMATILLA COUNTY, OREGON



NARRATIVE OF SURVEY

This survey was performed at the request of Mr. Jim Hatley. The purpose of the survey was to monument the adjusted boundary line as shown. The adjustment was approved by the City of Pilot Rock under development permit No. 00-015 dated July 24th, 2000. The boundary of Parcel 2 was located from the existing monuments as shown. All of the monuments along the west line of HATLEY ADDITION have been removed by construction. I located the southwest corner of Parcel 2, which is also the initial points for HATLEY ADDITION and Partition Plat 1996-06, in the following manner. I located the right of way line for the county road using the found pin at the PC and a computed point on that line at record bearing and distance from the found pin on the south line of Lot 1 of HATLEY ADDITION. I then did a line - line intersect with the right of way line and the north line of HATLEY ADDITION which I identified from the found pins as shown. The resulting position was within the the precision allowed in the ORS.

The survey was performed with a Lieca System 300 RTK GPS.

LEGEND

- FOUND A 5/8" IRON REBAR WITH A 2" AL CAP FROM PARTITION PLAT 1996-06
- FOUND A 5/8" IRON REBAR WITH A 1 1/8" RED PLASTIC CAP FROM HATLEY ADDITION
- SET A 5/8" x 24" IRON REBAR W/ A 1 1/8" RED PLASTIC CAP STAMPED ORLS 852 AND WALS 13922 EXCEPT AS NOTED
- × COMPUTED POINT
- (xx) RECORD MEASUREMENT
- R1 PARTITION PLAT 1996-06 CS# 96-037-B
- R2 PLAT OF HATLEY ADDITION BOOK 13, PAGE 89 CS# 96-160-B