

NARRATIVE

THE PURPOSE OF THIS SURVEY WAS TO ESTABLISH THE BOUNDARY OF A PARCEL OF LAND DEEDED TO OREGON PARKS AND RECREATION DEPARTMENT BY DEED RECORDED ON MICROFICHE REL 342-0725, IN UMATILLA COUNTY DEED RECORDS, SAID PARCEL BEING THE NORTHWEST QUARTER OF THE SOUTHEAST QUARTER OF SECTION 29, TOWNSHIP ONE NORTH, RANGE 35 EAST, OF THE WILLAMETTE MERIDIAN.

THE CENTER 1/4, SOUTH 1/4, AND THE SOUTH EAST SECTION CORNER OF SECTION 29 WERE ESTABLISHED BY FOUND MONUMENTS. THE EAST 1/4 CORNER MONUMENT WAS FOUND DESTROYED. THE CALCULATED POSITION FOR THIS CORNER WAS ESTABLISHED BY RECORD BEARING AND DISTANCE FROM POINT "G".

THE LINE FROM "A" TO "F" WAS HELD FOR THE NORTH LINE OF THIS PARCEL.

THERE ARE TWO EXISTING UTILITY EASEMENTS ON THIS PARCEL FOR TELEGRAPH AND OR POWER LINES, AND FOR A GAS LINE. NEITHER IS LOCATABLE AS DESCRIBED IN THE INSTRUMENTS OF RECORD.

A TOPCON G-T-S 300 FIVE SECOND TOTAL STATION INSTRUMENT WAS USED FOR THIS SURVEY.

LEGEND

- SET 5/8" X 30" IRON ROD WITH 2" ALUMINUM CAP MARKED AS SHOWN ON MAP
- ▲ SET ORANGE CARSONITE PADDLE ON BOUNDARY LINE. THEY ARE SHOWN "TO SCALE" ON THE MAP, EXCEPT AT THE CORNERS, WHERE THEY WERE SET 3' FROM THE MONUMENTS.
- FOUND 5/8" IRON ROD WITH A 1 1/2" ALUMINUM CAP MARKED "OREGON STATE PARKS" RECORD OF BEING SET" AUGUST 1981 CS* S-124-B"
- FOUND 1" OUTSIDE DIAMETER IRON PIPE PROTRUDING 1' ABOVE GROUND "NO RECORD FOUND OF THIS BEING SET"
- CALCULATED POSITION USING RECORD INFORMATION FROM CS* S-124-B (SEE NARRATIVE))
- () RECORD INFORMATION OF CS* S-124-B
- [] RECORD INFORMATION OF CS* 88-12-B
- | | RECORD INFORMATION OF CS* 94-59-B

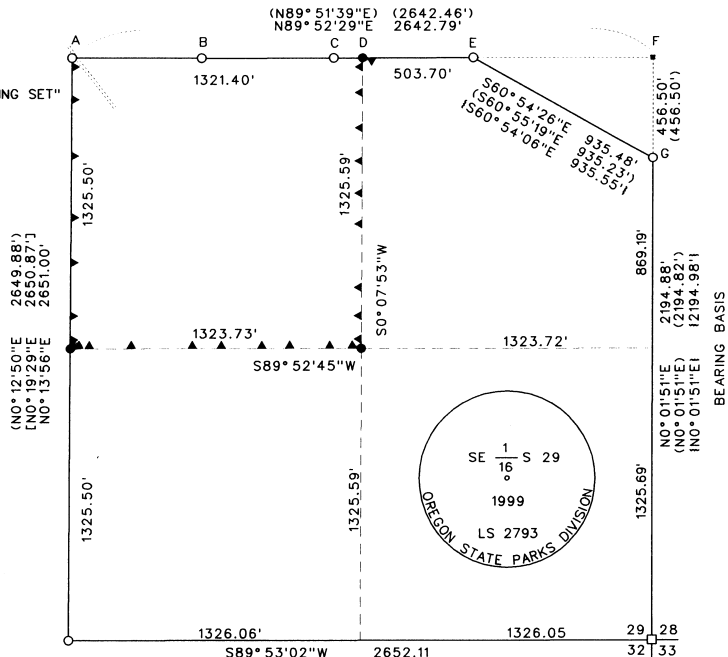
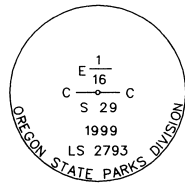
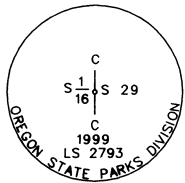
REGISTERED PROFESSIONAL LAND SURVEYOR
Dean Timmerman
 OREGON
 JANUARY 21, 1997
 DEAN A. TIMMERMAN
 2793
 EXPIRES 6-30-00

FOUND STEEL POST AND PADDLE
 N33°02'44"E 1.92'

18" FIR BEARS N40°E 74.5'
 WITH YELLOW PARKS BEARING TREE TAG

A 2" IRON PIPE BEARS
 N29°45'32"E 73.22'
 (N29°46'40"E 73.25")

"NO RECORD FOUND OF 2" PIPE BEING SET"



FROM THIS CORNER A
 3/8" IRON ROD BEARS
 S51°45'23"W 25.81'
 (S51°57'13"W 25.82')
 "NO RECORD FOUND OF THIS BEING SET"

S89°53'02"W 2652.11
 (S89°53'35"W 2650.89')
 [S89°58'51"W 2651.75']

22" FIR, SCRIBES VISIBLE BUT NOT READABLE BEARS S22°E 34.8'
 22" FIR, SCRIBES VISIBLE BUT NOT READABLE BEARS N86°E 12.6'

- A-B (N89°51'39"E) (589.92')
 N89°53'41"E 589.88'
 "B" IS 0.21' SOUTH OF CALCULATED LINE
- B-C (N89°51'39"E) (600.00')
 N89°52'39"E 600.00'
 "C" IS 0.24' SOUTH OF CALCULATED LINE
- C-D N89°46'16"E 131.52'
- C-E (N89°51'39"E) (634.94')
 N89°50'26" E 635.22'
- D-E N89°51'31"E 503.70'
- E-F (N89°51'39"E) (817.60')
 N89°53'05"E 817.70'
 "E" IS 0.14' NORTH OF CALCULATED LINE
- F-G (S0°01'51"W) (456.50')
 S0°01'51"W 456.50'



OREGON PARKS & RECREATION DEPARTMENT
 BOUNDARY SURVEY
EMIGRANT SPRINGS STATE PARK
 S.E. 1/4 OF SEC. 29, T.1 N., R. 35 E., W.M.
 UMATILLA COUNTY
 NOV.8, 1999

OREGON STATE PARKS
 1115 COMMERCIAL ST. NE
 SALEM, OREGON 97310
 (503)578-4168

RECEIVED BY
 17
 No. *KK*

CS* 99-317-B
 DATE RECEIVED 12-99
 UMATILLA COUNTY SURVEYOR