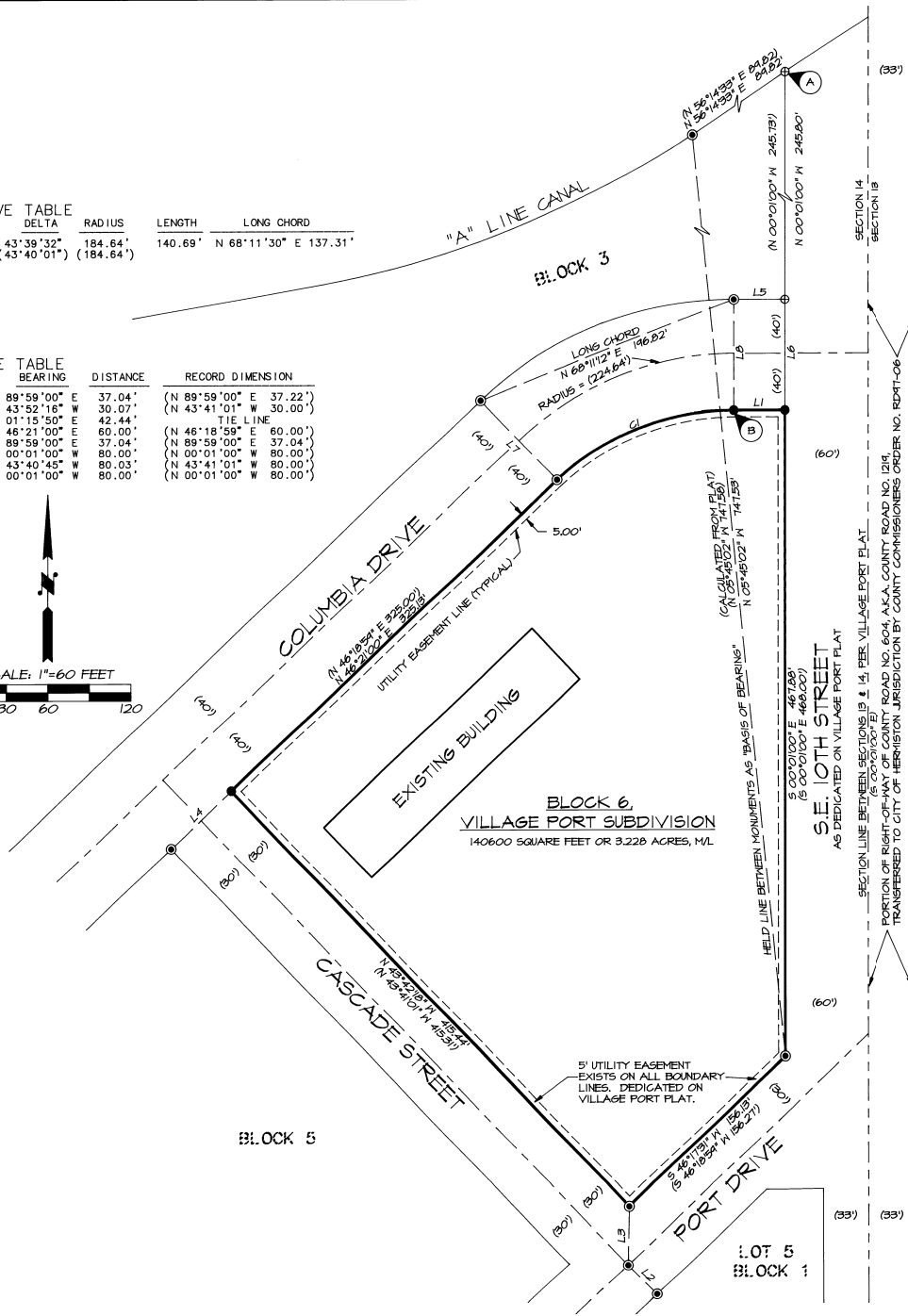
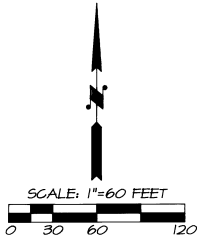


# RECORD OF SURVEY

FEBRUARY, 1999.

CURVE NO.	DELTA	RADIUS	LENGTH	LONG CHORD
C1	43°39'32" (43°40'01")	184.64' (184.64')	140.69'	N 68°11'30" E 137.31'

LINE NO.	BEARING	DISTANCE	RECORD DIMENSION
L1	N 89°59'00" E	37.04'	(N 89°59'00" E 37.22')
L2	N 43°52'16" W	30.07'	(N 43°41'01" W 30.00')
L3	N 01°15'50" E	42.44'	TIE LINE
L4	N 46°21'00" E	60.00'	(N 46°18'59" E 60.00')
L5	N 89°59'00" E	37.04'	(N 89°59'00" E 37.04')
L6	N 00°01'00" W	80.00'	(N 00°01'00" W 80.00')
L7	N 43°40'45" W	80.03'	(N 43°41'01" W 80.00')
L8	N 00°01'00" W	80.00'	(N 00°01'00" W 80.00')



### LEGEND

- - SET 5/8" BY 30" IRON PIN WITH 1/2" YELLOW PLASTIC CAP MARKED "ORPLS 1106 WA PLS 17312".
- ⊙ - FOUND 5/8" IRON PIN PER PLAT OF VILLAGE PORT SUBDIVISION.
- (XOX) - RECORD DIMENSION FROM PLAT OF VILLAGE PORT SUBDIVISION BOOK 11, PAGE 16, RECORD OF TOWN PLATS.
- L1 - SEE LINE TABLE FOR DIMENSIONS.
- C1 - SEE CURVE TABLE FOR DIMENSIONS.
- ⊙ A - HELD RECORD DISTANCE FROM FOUND PLAT MONUMENT LOCATED S 56°14'33" W, 84.82' AWAY. FOUND ORIGINAL PLAT MONUMENT BENT, BURIED 8" BELOW PAVED STREET SURFACE.
- ⊙ B - FOUND ORIGINAL PLAT MONUMENT BADLY BENT, SET NEW MONUMENT IN PROPER POSITION RELATIVE TO FOUND PLAT MONUMENT ON N. LINE OF COLUMBIA DRIVE AT POINT OF TANGENCY BEARING N 00°01'00" W, 80.00 FEET AWAY.

### NARRATIVE OF SURVEY

THIS SURVEY WAS MADE AT THE REQUEST OF BLUE MOUNTAIN COMMUNITY COLLEGE TO IDENTIFY THE BOUNDARY OF BLOCK 6, VILLAGE PORT SUBDIVISION.

VILLAGE PORT SUBDIVISION WAS PLATTED IN 1971 AND IS PARTIALLY DEVELOPED. DEVELOPMENT ACTIVITY HAS DAMAGED OR REMOVED SOME OF THE ORIGINAL PLAT CORNERS. FOUR OF THE SIX CORNERS ON BLOCK 6 WERE RECOVERED, WITH THE CURVATURE POINT CLOSEST TO S.E. 10TH STREET BEING BADLY BENT. THE N.W. CORNER OF BLOCK 6 WAS MISSING AND WAS RE-ESTABLISHED 60.00 FEET FROM THE RECOVERED NORTHEAST CORNER OF BLOCK 5, ON THE SOUTH LINE OF COLUMBIA DRIVE, DEFINED BY FOUND MONUMENTS. THE N.E. CORNER OF BLOCK 3, (WEST LINE OF S.E. 10TH STREET) WAS ESTABLISHED BY CALCULATING RECORD BEARING AND DISTANCE FROM THE FOUND UNDISTURBED MONUMENT LOCATED S 56°14'33" WEST, 84.82 FEET AWAY. THE CORNER MONUMENT AT THE N.E. CORNER OF BLOCK 3 WAS FOUND 8" BELOW STREET LEVEL, BENT AND UNUSABLE. REQUIRED MONUMENT LOCATIONS FOR THE N.E. CORNER OF BLOCK 6 AND THE CURVATURE POINT CLOSED TO S.E. 10TH STREET WERE DETERMINED AS SHOWN.

THIS SURVEY WAS MADE BY A 2 PERSON CREW USING A SOKKIA SET 4B FIVE SECOND TOTAL STATION. MEASUREMENTS WERE MADE BY A COMBINATION OF CLOSED TRAVERSES AND RADIAL TIES. CONTROL TIES AND MONUMENTS SET BY RADIAL METHODS WERE VERIFIED BY SEPARATE OBSERVATIONS.

5-99  
XX  
99-36-B

REGISTERED PROFESSIONAL LAND SURVEYOR

*William R. Wells*

OREGON  
JULY 22, 1977  
WILLIAM R. WELLS  
1106  
RENEWS 6/30/00

WILLIAM R. WELLS, PLS  
357 N.E. HWY. 11  
P.O. BOX 1696  
PENDLETON, OR 97801  
PHONE: (541) 276-6362

DATE: 02/99 DR. BY: WRW  
CK. BY: WRW NO: 99-607

PROJECT:  
SURVEY FOR:  
BLUE MOUNTAIN  
COMMUNITY COLLEGE  
HERMISTON CAMPUS  
BLOCK 6, VILLAGE PORT  
SUBDIVISION  
IN THE NE1/4 SECTION 14, T4N,  
R28E, W1M, UMATILLA COUNTY.

WBMHRMP