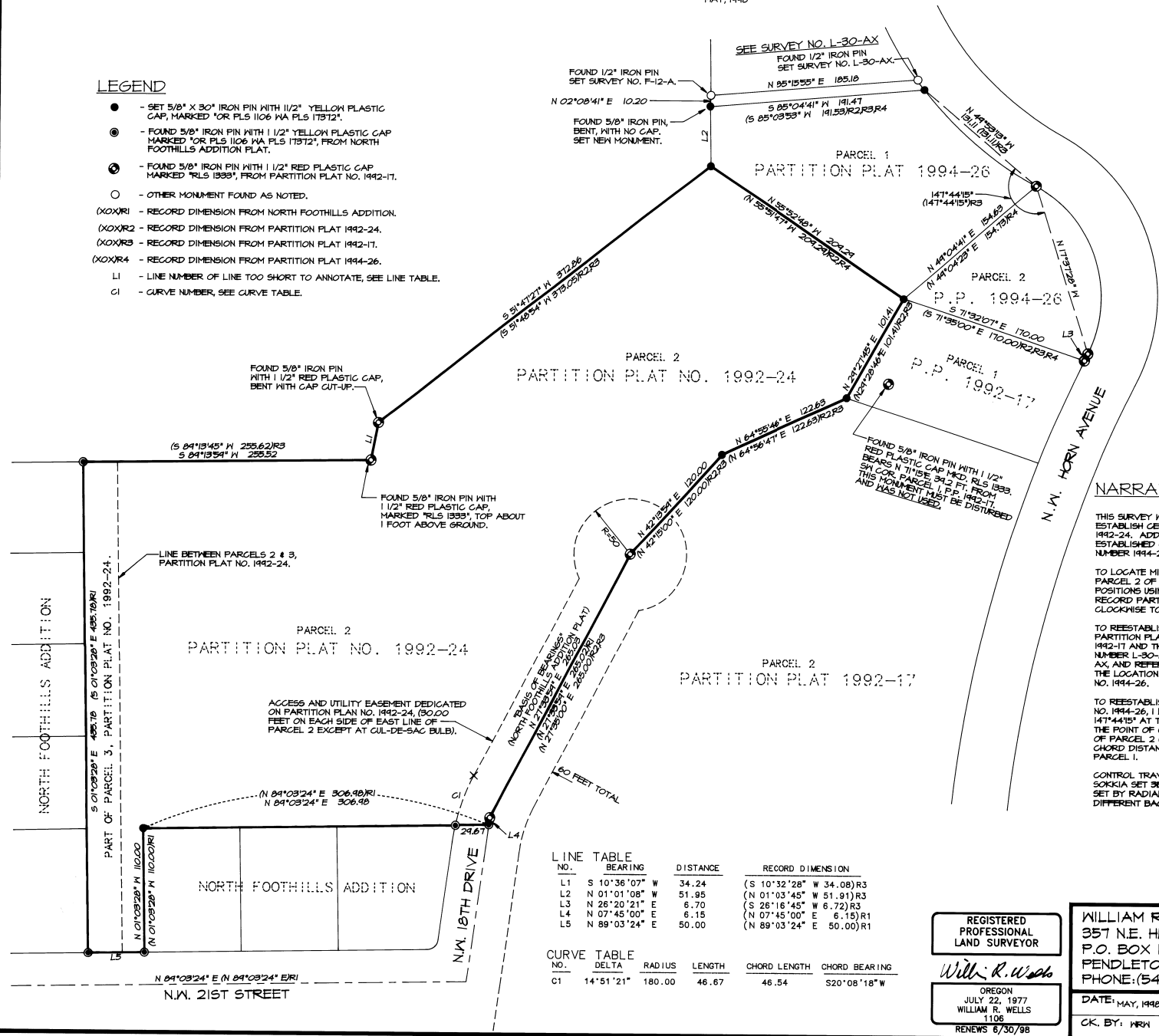


RECORD OF SURVEY

MAY, 1998

LEGEND

- - SET 5/8" X 30" IRON PIN WITH 1/2" YELLOW PLASTIC CAP, MARKED "OR PLS 1106 MA PLS 11312".
- ⊙ - FOUND 5/8" IRON PIN WITH 1/2" YELLOW PLASTIC CAP MARKED "OR PLS 1106 MA PLS 11312", FROM NORTH FOOTHILLS ADDITION PLAT.
- ⊙ - FOUND 5/8" IRON PIN WITH 1/2" RED PLASTIC CAP MARKED "PLS 1333", FROM PARTITION PLAT NO. 1942-17.
- - OTHER MONUMENT FOUND AS NOTED.
- (XOXR) - RECORD DIMENSION FROM NORTH FOOTHILLS ADDITION.
- (XOXR2) - RECORD DIMENSION FROM PARTITION PLAT 1942-24.
- (XOXR3) - RECORD DIMENSION FROM PARTITION PLAT 1942-17.
- (XOXR4) - RECORD DIMENSION FROM PARTITION PLAT 1944-26.
- L1 - LINE NUMBER OF LINE TOO SHORT TO ANNOTATE, SEE LINE TABLE.
- C1 - CURVE NUMBER, SEE CURVE TABLE.



NARRATIVE OF SURVEY

THIS SURVEY WAS MADE AT THE REQUEST OF JIM WHITNEY TO LOCATE OR RE-ESTABLISH CERTAIN MONUMENTS IN PARCELS 2 & 3 OF PARTITION PLAT NO. 1942-24. ADDITIONALLY, CERTAIN MONUMENTS WERE RECOVERED AND RE-ESTABLISHED ON THE BOUNDARY OF PARCELS 1 & 2 OF PARTITION PLAT NUMBER 1944-26.

TO LOCATE MISSING CORNER MONUMENTS ON THE EAST AND NORTH LINE OF PARCEL 2 OF PARTITION PLAT NO. 1942-24, I CALCULATED MISSING CORNER POSITIONS USING RECORD DISTANCES FROM PARTITION PLAT NO. 1942-24. RECORD PARTITION PLAT BEARINGS WERE ROTATED 00°01'01" COUNTER-CLOCKWISE TO MATCH BEARING BASE FOR NORTH FOOTHILLS ADDITION.

TO REESTABLISH THE POSITION FOR THE NORTHEAST CORNER OF PARCEL 1 OF PARTITION PLAT NO. 1944-26, I REFERRED TO THE PARTITION PLAT NUMBER 1942-17 AND THE NOTES MADE REFERRING TO MONUMENTS FOUND PER SURVEY NUMBER L-30-AX. I THEN USED MONUMENTS FOUND FROM SURVEY NO. L-30-AX AND REFERRED TO ON PARTITION PLAT NUMBER 1942-17, TO REPOSITION THE LOCATION FOR THE NORTHWEST CORNER OF PARCEL 1 OF PARTITION PLAT NO. 1944-26.

TO REESTABLISH THE NORTHEAST CORNER OF PARCEL 1 OF PARTITION PLAT NO. 1944-26, I LOCATE THE CORNER BY TURNING THE RECORD ANGLE OF 147°44'15" AT THE SOUTHEAST CORNER OF SAID PARCEL 1, BACKSIGHTING THE POINT OF CURVATURE MONUMENT JUST NORTH OF THE SOUTHEAST CORNER OF PARCEL 2 OF PARTITION PLAT NO. 1944-26 AND MEASURE THE RECORD CHORD DISTANCE OF 131.11 FEET TO THE NORTHWEST CORNER OF SAID PARCEL 1.

CONTROL TRAVERSE AND TIES TO FOUND MONUMENTS WERE MADE WITH A SOKKIA SET 33 ONE SECOND TOTAL STATION. REESTABLISHED CORNERS WERE SET BY RADIAL METHODS AND VERIFIED BY SEPERATE OBSERVATIONS FROM DIFFERENT BACKSIGHTS.

| LINE NO. | BEARING | DISTANCE | RECORD DIMENSION |
|----------|---------------|----------|-------------------------|
| L1 | S 10°36'07" W | 34.24 | (S 10°32'28" W 34.08)R3 |
| L2 | N 01°01'08" W | 51.85 | (N 01°03'45" W 51.91)R3 |
| L3 | N 26°20'21" E | 6.70 | (S 26°16'45" W 6.72)R3 |
| L4 | N 07°45'00" E | 6.15 | (N 07°45'00" E 6.15)R1 |
| L5 | N 89°03'24" E | 50.00 | (N 89°03'24" E 50.00)R1 |

| CURVE NO. | DELTA | RADIUS | LENGTH | CHORD LENGTH | CHORD BEARING |
|-----------|-----------|--------|--------|--------------|---------------|
| C1 | 14°51'21" | 180.00 | 46.67 | 46.54 | S20°08'18" W |

REGISTERED PROFESSIONAL LAND SURVEYOR
William R. Wells
 OREGON
 JULY 22, 1977
 WILLIAM R. WELLS
 1106
 RENEWS 6/30/98

WILLIAM R. WELLS, PLS
 357 N.E. HWY. 11
 P.O. BOX 1696
 PENDLETON, OR 97801
 PHONE: (541) 276-6362
 DATE: MAY, 1998 DR. BY: JCL
 CK. BY: HRN NO: 48-528

RECEIVED BY
 Umatilla County Surveyors
 Date: 5-98
 Rec'd By: RR
 No. 98-102-B WHITLOT

PROJECT:
 BOUNDARY SURVEY FOR:
 JIM WHITNEY
 LOCATED IN THE SW 1/4 OF SECTION 3,
 TOWNSHIP 2 NORTH, RANGE 32 EAST, T14N,
 UMATILLA COUNTY, OREGON.