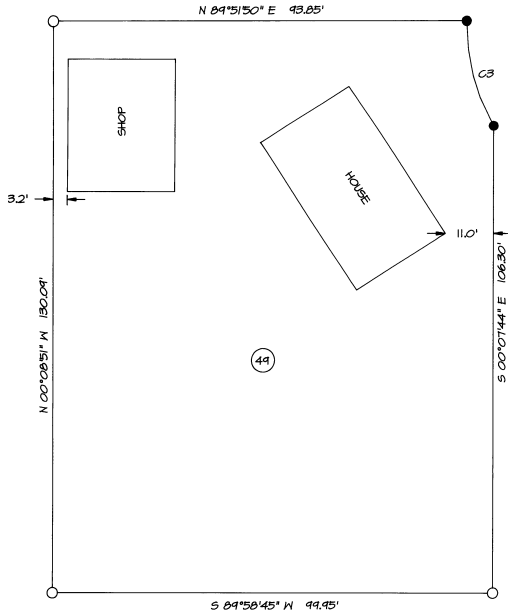


RECORD OF SURVEY

APRIL 2, 1998



SCALE: 1"=20 FEET
0 10 20 40
DETAIL OF SURVEY SITE

LEGEND

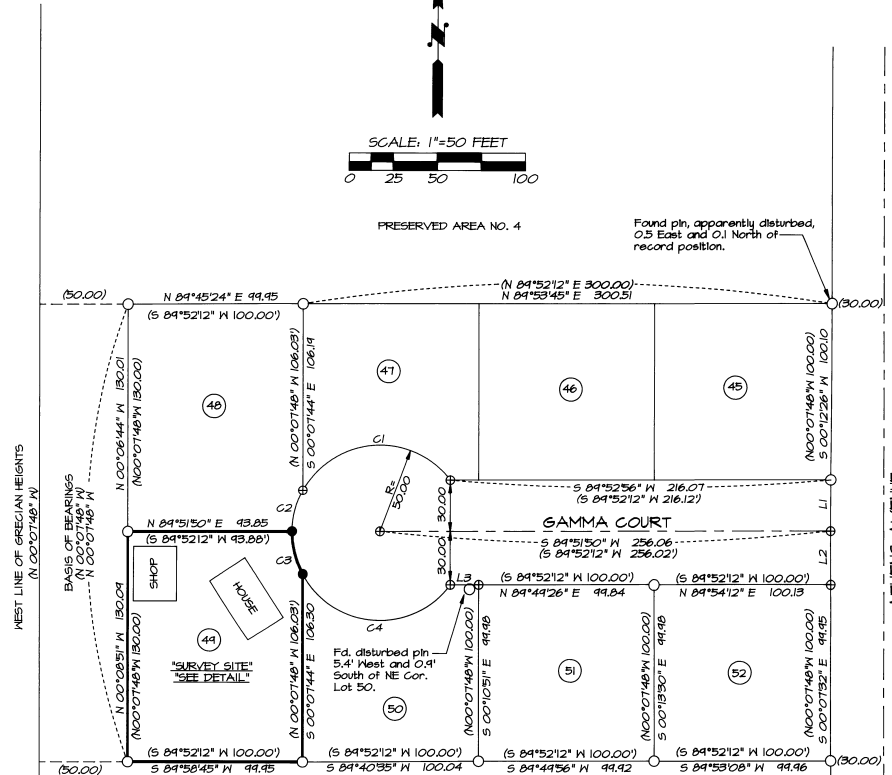
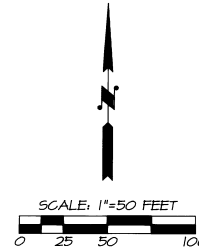
- - SET A 5/8" X 30" IRON PIN WITH A 1 1/2" YELLOW PLASTIC CAP MARKED "OR FLS 1106, WA FLS 17312".
- - FOUND 1/2 OR 5/8" IRON PIN FROM GRECIAN HEIGHTS PUD PLAT.
- ⊕ - CALCULATED POINT ONLY, NOT FOUND OR SET.
- (XOX) - RECORD DIMENSION FROM GRECIAN HEIGHTS PUD PLAT.
- ⑤1 - LOT NUMBER FROM GRECIAN HEIGHTS PUD PLAT.
- C3 - INDICATES CURVE NUMBER, SEE CURVE TABLE.
- L3 - INDICATES LINE NUMBER, SEE LINE TABLE.

NARRATIVE OF SURVEY

THIS SURVEY WAS MADE AT THE REQUEST OF THE PITTMAN'S TO LOCATE THE BOUNDARY OF LOT 44 OF THE GRECIAN HEIGHTS PUD PLAT.

ORIGINAL PLAT MONUMENTS SHOWN ON THIS PLAT WERE HELD FOR POSITION UNLESS OTHERWISE NOTED. TO LOCATE THE EAST LINE OF LOTS 49 AND 48, I HELD MONUMENTS FOUND AT THE SOUTHEAST CORNER OF LOT 44 AND THE NORTHEAST CORNER OF LOT 48. TO DETERMINE THE ALIGNMENT OF GAMMA COURT, I HELD A LINE FROM THE RECOVERED NORTHWEST CORNER OF LOT 49 TO A POINT MID-WAY BETWEEN A LINE DRAWN FROM THE RECOVERED SOUTHEAST CORNER OF LOT 48 AND THE RECOVERED NORTHWEST CORNER OF LOT 52. TO LOCATE THE CENTER OF THE CUL-DE-SAC IN GAMMA COURT, I USED SINGLE PROPORTION MEASUREMENT BETWEEN THE NORTHWEST CORNER OF LOT 49 AND THE CALCULATED POSITION FOR THE CENTERLINE OF GAMMA COURT AT THE WEST LINE OF ATHENS AVENUE.

THIS SURVEY WAS MADE WITH A SOKKIA SET 48 5 SECOND TOTAL STATION. MONUMENTS WERE SET BY RADIAL METHODS AND VERIFIED BY A SEPARATE OBSERVATION WITH A DIFFERENT CONTROL BACKSIGHT.



NO.	DELTA	RADIUS	LENGTH	CHORD BEARING	CHORD DISTANCE
C1	114°26'01"	50.00	99.86	S85°46'37"W	84.07
C2	28°41'47"	50.00	25.04	S14°12'43"W	24.78
C3	28°40'54"	50.00	25.03	S14°28'37"E	24.77
C4	114°26'55"	50.00	99.88	S86°02'31"E	84.08

SEE PLAT OF GRECIAN HEIGHTS FOR RECORD SURVEY DATA.

NO.	BEARING	DISTANCE
L1	S 00°07'32" E	29.93 (N00°07'48" W 30.00')
L2	S 00°07'32" E	30.00 (N00°07'48" W 30.00')
L3	N 89°49'48" E	16.09 (S89°52'12" W 16.12')

REGISTERED PROFESSIONAL LAND SURVEYOR

William R. Wells

OREGON
JULY 22, 1977
WILLIAM R. WELLS
1106
RENEWS 6/30/98

WILLIAM R. WELLS, PLS
357 N.E. HWY. 11
P.O. BOX 1696
PENDLETON, OR 97801
PHONE: (541) 276-6362

DATE: 4/2/98 DR. BY: DMT
CK. BY: KRH NO: 48-511

PROJECT:
SURVEY FOR:
PITTMAN

LOT 44, GRECIAN HEIGHTS, PUD, LOCATED IN THE EAST HALF OF SECTION 15, T2N, R32E, 11M, UMATILLA COUNTY, OREGON.

RECEIVED BY

(Umatilla County Surveyor)

File # 4-78

Rec'd By *AK*

No. 78-60-B

PITTMAN