

Survey for **ROBERT KENNEY**
 In SW 1/4 Section 19, T4N, R29E, W.M.,
 Umatilla County, Oregon
 2/22/94 Job #59402016
 Edwards Surveying P.O. Box 763
 567-3336 Hermiston, OR. 97838

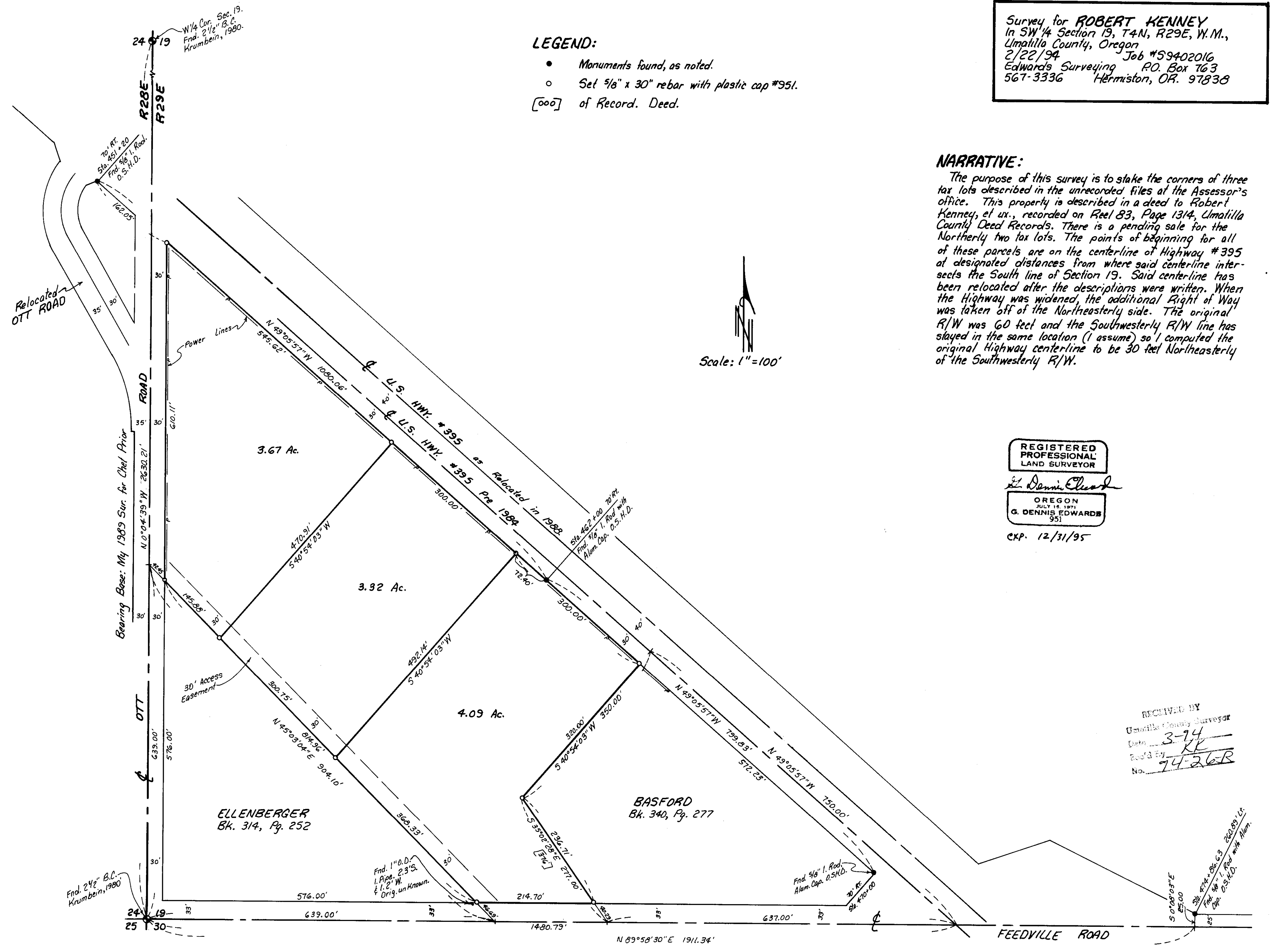
LEGEND:

- Monuments found, as noted.
- Set 5/8" x 30" rebar with plastic cap #951.

[000] of Record. Deed.

NARRATIVE:

The purpose of this survey is to stake the corners of three tax lots described in the unrecorded files at the Assessor's office. This property is described in a deed to Robert Kenney, et ux., recorded on Reel 83, Page 1314, Umatilla County Deed Records. There is a pending sale for the Northerly two tax lots. The points of beginning for all of these parcels are on the centerline of Highway #395 at designated distances from where said centerline intersects the South line of Section 19. Said centerline has been relocated after the descriptions were written. When the Highway was widened, the additional Right of Way was taken off of the Northeasterly side. The original R/W was 60 feet and the Southwesterly R/W line has stayed in the same location (I assume) so I computed the original Highway centerline to be 30 feet Northeasterly of the Southwesterly R/W.



REGISTERED PROFESSIONAL LAND SURVEYOR
G. Dennis Edwards
 OREGON
 JULY 15, 1971
 G. DENNIS EDWARDS
 951
 exp. 12/31/95

RECEIVED BY
 Umatilla County Surveyor
 Date 3-7-94
 Rec'd by KE
 No. 74-26-R

W/4 Cor. Sec. 19,
 Fnd. 2 1/2" B.C.
 Krumbein, 1980.

70' RT.
 Sta. 451+20
 Fnd. 5/8" I. Rod.
 O.S.H.D.

162.05'

35' 30'

Relocated OTT ROAD

Power Lines

U.S. HWY. #395 as Relocated in 1988

616.462+00 70' RT.
 Fnd. 5/8" I. Rod. with
 Alum. Cap. O.S.H.D.

30' RT.
 Sta. 470+00
 Fnd. 5/8" I. Rod. with
 Alum. Cap. O.S.H.D.

30' RT.
 Sta. 485+00
 Fnd. 5/8" I. Rod. with
 Alum. Cap. O.S.H.D.

30' RT.
 Sta. 500+00
 Fnd. 5/8" I. Rod. with
 Alum. Cap. O.S.H.D.

30' RT.
 Sta. 515+00
 Fnd. 5/8" I. Rod. with
 Alum. Cap. O.S.H.D.

30' RT.
 Sta. 530+00
 Fnd. 5/8" I. Rod. with
 Alum. Cap. O.S.H.D.

30' RT.
 Sta. 545+00
 Fnd. 5/8" I. Rod. with
 Alum. Cap. O.S.H.D.

30' RT.
 Sta. 560+00
 Fnd. 5/8" I. Rod. with
 Alum. Cap. O.S.H.D.

30' RT.
 Sta. 575+00
 Fnd. 5/8" I. Rod. with
 Alum. Cap. O.S.H.D.

30' RT.
 Sta. 590+00
 Fnd. 5/8" I. Rod. with
 Alum. Cap. O.S.H.D.

30' RT.
 Sta. 605+00
 Fnd. 5/8" I. Rod. with
 Alum. Cap. O.S.H.D.

30' RT.
 Sta. 620+00
 Fnd. 5/8" I. Rod. with
 Alum. Cap. O.S.H.D.

30' RT.
 Sta. 635+00
 Fnd. 5/8" I. Rod. with
 Alum. Cap. O.S.H.D.

30' RT.
 Sta. 650+00
 Fnd. 5/8" I. Rod. with
 Alum. Cap. O.S.H.D.

30' RT.
 Sta. 665+00
 Fnd. 5/8" I. Rod. with
 Alum. Cap. O.S.H.D.

30' RT.
 Sta. 680+00
 Fnd. 5/8" I. Rod. with
 Alum. Cap. O.S.H.D.

30' RT.
 Sta. 695+00
 Fnd. 5/8" I. Rod. with
 Alum. Cap. O.S.H.D.

30' RT.
 Sta. 710+00
 Fnd. 5/8" I. Rod. with
 Alum. Cap. O.S.H.D.

30' RT.
 Sta. 725+00
 Fnd. 5/8" I. Rod. with
 Alum. Cap. O.S.H.D.

30' RT.
 Sta. 740+00
 Fnd. 5/8" I. Rod. with
 Alum. Cap. O.S.H.D.

30' RT.
 Sta. 755+00
 Fnd. 5/8" I. Rod. with
 Alum. Cap. O.S.H.D.

30' RT.
 Sta. 770+00
 Fnd. 5/8" I. Rod. with
 Alum. Cap. O.S.H.D.

30' RT.
 Sta. 785+00
 Fnd. 5/8" I. Rod. with
 Alum. Cap. O.S.H.D.

30' RT.
 Sta. 800+00
 Fnd. 5/8" I. Rod. with
 Alum. Cap. O.S.H.D.

30' RT.
 Sta. 815+00
 Fnd. 5/8" I. Rod. with
 Alum. Cap. O.S.H.D.

30' RT.
 Sta. 830+00
 Fnd. 5/8" I. Rod. with
 Alum. Cap. O.S.H.D.

30' RT.
 Sta. 845+00
 Fnd. 5/8" I. Rod. with
 Alum. Cap. O.S.H.D.

30' RT.
 Sta. 860+00
 Fnd. 5/8" I. Rod. with
 Alum. Cap. O.S.H.D.

30' RT.
 Sta. 875+00
 Fnd. 5/8" I. Rod. with
 Alum. Cap. O.S.H.D.

30' RT.
 Sta. 890+00
 Fnd. 5/8" I. Rod. with
 Alum. Cap. O.S.H.D.

30' RT.
 Sta. 905+00
 Fnd. 5/8" I. Rod. with
 Alum. Cap. O.S.H.D.

30' RT.
 Sta. 920+00
 Fnd. 5/8" I. Rod. with
 Alum. Cap. O.S.H.D.

30' RT.
 Sta. 935+00
 Fnd. 5/8" I. Rod. with
 Alum. Cap. O.S.H.D.

30' RT.
 Sta. 950+00
 Fnd. 5/8" I. Rod. with
 Alum. Cap. O.S.H.D.

30' RT.
 Sta. 965+00
 Fnd. 5/8" I. Rod. with
 Alum. Cap. O.S.H.D.

30' RT.
 Sta. 980+00
 Fnd. 5/8" I. Rod. with
 Alum. Cap. O.S.H.D.

30' RT.
 Sta. 995+00
 Fnd. 5/8" I. Rod. with
 Alum. Cap. O.S.H.D.

30' RT.
 Sta. 1010+00
 Fnd. 5/8" I. Rod. with
 Alum. Cap. O.S.H.D.

30' RT.
 Sta. 1025+00
 Fnd. 5/8" I. Rod. with
 Alum. Cap. O.S.H.D.

30' RT.
 Sta. 1040+00
 Fnd. 5/8" I. Rod. with
 Alum. Cap. O.S.H.D.

30' RT.
 Sta. 1055+00
 Fnd. 5/8" I. Rod. with
 Alum. Cap. O.S.H.D.

30' RT.
 Sta. 1070+00
 Fnd. 5/8" I. Rod. with
 Alum. Cap. O.S.H.D.

30' RT.
 Sta. 1085+00
 Fnd. 5/8" I. Rod. with
 Alum. Cap. O.S.H.D.

30' RT.
 Sta. 1100+00
 Fnd. 5/8" I. Rod. with
 Alum. Cap. O.S.H.D.

30' RT.
 Sta. 1115+00
 Fnd. 5/8" I. Rod. with
 Alum. Cap. O.S.H.D.

30' RT.
 Sta. 1130+00
 Fnd. 5/8" I. Rod. with
 Alum. Cap. O.S.H.D.

30' RT.
 Sta. 1145+00
 Fnd. 5/8" I. Rod. with
 Alum. Cap. O.S.H.D.

30' RT.
 Sta. 1160+00
 Fnd. 5/8" I. Rod. with
 Alum. Cap. O.S.H.D.

30' RT.
 Sta. 1175+00
 Fnd. 5/8" I. Rod. with
 Alum. Cap. O.S.H.D.

30' RT.
 Sta. 1190+00
 Fnd. 5/8" I. Rod. with
 Alum. Cap. O.S.H.D.

30' RT.
 Sta. 1205+00
 Fnd. 5/8" I. Rod. with
 Alum. Cap. O.S.H.D.

30' RT.
 Sta. 1220+00
 Fnd. 5/8" I. Rod. with
 Alum. Cap. O.S.H.D.

30' RT.
 Sta. 1235+00
 Fnd. 5/8" I. Rod. with
 Alum. Cap. O.S.H.D.

30' RT.
 Sta. 1250+00
 Fnd. 5/8" I. Rod. with
 Alum. Cap. O.S.H.D.

30' RT.
 Sta. 1265+00
 Fnd. 5/8" I. Rod. with
 Alum. Cap. O.S.H.D.

30' RT.
 Sta. 1280+00
 Fnd. 5/8" I. Rod. with
 Alum. Cap. O.S.H.D.

30' RT.
 Sta. 1295+00
 Fnd. 5/8" I. Rod. with
 Alum. Cap. O.S.H.D.

30' RT.
 Sta. 1310+00
 Fnd. 5/8" I. Rod. with
 Alum. Cap. O.S.H.D.

30' RT.
 Sta. 1325+00
 Fnd. 5/8" I. Rod. with
 Alum. Cap. O.S.H.D.

30' RT.
 Sta. 1340+00
 Fnd. 5/8" I. Rod. with
 Alum. Cap. O.S.H.D.

30' RT.
 Sta. 1355+00
 Fnd. 5/8" I. Rod. with
 Alum. Cap. O.S.H.D.

30' RT.
 Sta. 1370+00
 Fnd. 5/8" I. Rod. with
 Alum. Cap. O.S.H.D.

30' RT.
 Sta. 1385+00
 Fnd. 5/8" I. Rod. with
 Alum. Cap. O.S.H.D.

30' RT.
 Sta. 1400+00
 Fnd. 5/8" I. Rod. with
 Alum. Cap. O.S.H.D.

30' RT.
 Sta. 1415+00
 Fnd. 5/8" I. Rod. with
 Alum. Cap. O.S.H.D.

30' RT.
 Sta. 1430+00
 Fnd. 5/8" I. Rod. with
 Alum. Cap. O.S.H.D.

30' RT.
 Sta. 1445+00
 Fnd. 5/8" I. Rod. with
 Alum. Cap. O.S.H.D.

30' RT.
 Sta. 1460+00
 Fnd. 5/8" I. Rod. with
 Alum. Cap. O.S.H.D.

30' RT.
 Sta. 1475+00
 Fnd. 5/8" I. Rod. with
 Alum. Cap. O.S.H.D.

30' RT.
 Sta. 1490+00
 Fnd. 5/8" I. Rod. with
 Alum. Cap. O.S.H.D.

30' RT.
 Sta. 1505+00
 Fnd. 5/8" I. Rod. with
 Alum. Cap. O.S.H.D.

30' RT.
 Sta. 1520+00
 Fnd. 5/8" I. Rod. with
 Alum. Cap. O.S.H.D.

30' RT.
 Sta. 1535+00
 Fnd. 5/8" I. Rod. with
 Alum. Cap. O.S.H.D.

30' RT.
 Sta. 1550+00
 Fnd. 5/8" I. Rod. with
 Alum. Cap. O.S.H.D.

30' RT.
 Sta. 1565+00
 Fnd. 5/8" I. Rod. with
 Alum. Cap. O.S.H.D.

30' RT.
 Sta. 1580+00
 Fnd. 5/8" I. Rod. with
 Alum. Cap. O.S.H.D.

30' RT.
 Sta. 1595+00
 Fnd. 5/8" I. Rod. with
 Alum. Cap. O.S.H.D.

30' RT.
 Sta. 1610+00
 Fnd. 5/8" I. Rod. with
 Alum. Cap. O.S.H.D.

30' RT.
 Sta. 1625+00
 Fnd. 5/8" I. Rod. with
 Alum. Cap. O.S.H.D.

30' RT.
 Sta. 1640+00
 Fnd. 5/8" I. Rod. with
 Alum. Cap. O.S.H.D.

30' RT.
 Sta. 1655+00
 Fnd. 5/8" I. Rod. with
 Alum. Cap. O.S.H.D.

30' RT.
 Sta. 1670+00
 Fnd. 5/8" I. Rod. with
 Alum. Cap. O.S.H.D.

30' RT.
 Sta. 1685+00
 Fnd. 5/8" I. Rod. with
 Alum. Cap. O.S.H.D.

30' RT.
 Sta. 1700+00
 Fnd. 5/8" I. Rod. with
 Alum. Cap. O.S.H.D.

30' RT.
 Sta. 1715+00
 Fnd. 5/8" I. Rod. with
 Alum. Cap. O.S.H.D.

30' RT.
 Sta. 1730+00
 Fnd. 5/8" I. Rod. with
 Alum. Cap. O.S.H.D.

30' RT.
 Sta. 1745+00
 Fnd. 5/8" I. Rod. with
 Alum. Cap. O.S.H.D.

30' RT.
 Sta. 1760+00
 Fnd. 5/8" I. Rod. with
 Alum. Cap. O.S.H.D.

30' RT.
 Sta. 1775+00
 Fnd. 5/8" I. Rod. with
 Alum. Cap. O.S.H.D.

30' RT.
 Sta. 1790+00
 Fnd. 5/8" I. Rod. with
 Alum. Cap. O.S.H.D.

30' RT.
 Sta. 1805+00
 Fnd. 5/8" I. Rod. with
 Alum. Cap. O.S.H.D.

30' RT.
 Sta. 1820+00
 Fnd. 5/8" I. Rod. with
 Alum. Cap. O.S.H.D.

30' RT.
 Sta. 1835+00
 Fnd. 5/8" I. Rod. with
 Alum. Cap. O.S.H.D.

30' RT.
 Sta. 1850+00
 Fnd. 5/8" I. Rod. with
 Alum. Cap. O.S.H.D.

30' RT.
 Sta. 1865+00
 Fnd. 5/8" I. Rod. with
 Alum. Cap. O.S.H.D.

30' RT.
 Sta. 1880+00
 Fnd. 5/8" I. Rod. with
 Alum. Cap. O.S.H.D.

30' RT.
 Sta. 1895+00
 Fnd. 5/8" I. Rod. with
 Alum. Cap. O.S.H.D.

30' RT.
 Sta. 1910+00
 Fnd. 5/8" I. Rod. with
 Alum. Cap. O.S.H.D.

30' RT.
 Sta. 1925+00
 Fnd. 5/8" I. Rod. with
 Alum. Cap. O.S.H.D.

30' RT.
 Sta. 1940+00
 Fnd. 5/8" I. Rod. with
 Alum. Cap. O.S.H.D.

30' RT.
 Sta. 1955+00
 Fnd. 5/8" I. Rod. with
 Alum. Cap. O.S.H.D.

30' RT.
 Sta. 1970+00
 Fnd. 5/8" I. Rod. with
 Alum. Cap. O.S.H.D.

30' RT.
 Sta. 1985+00
 Fnd. 5/8" I. Rod. with
 Alum. Cap. O.S.H.D.

30' RT.
 Sta. 2000+00
 Fnd. 5/8" I. Rod. with
 Alum. Cap. O.S.H.D.