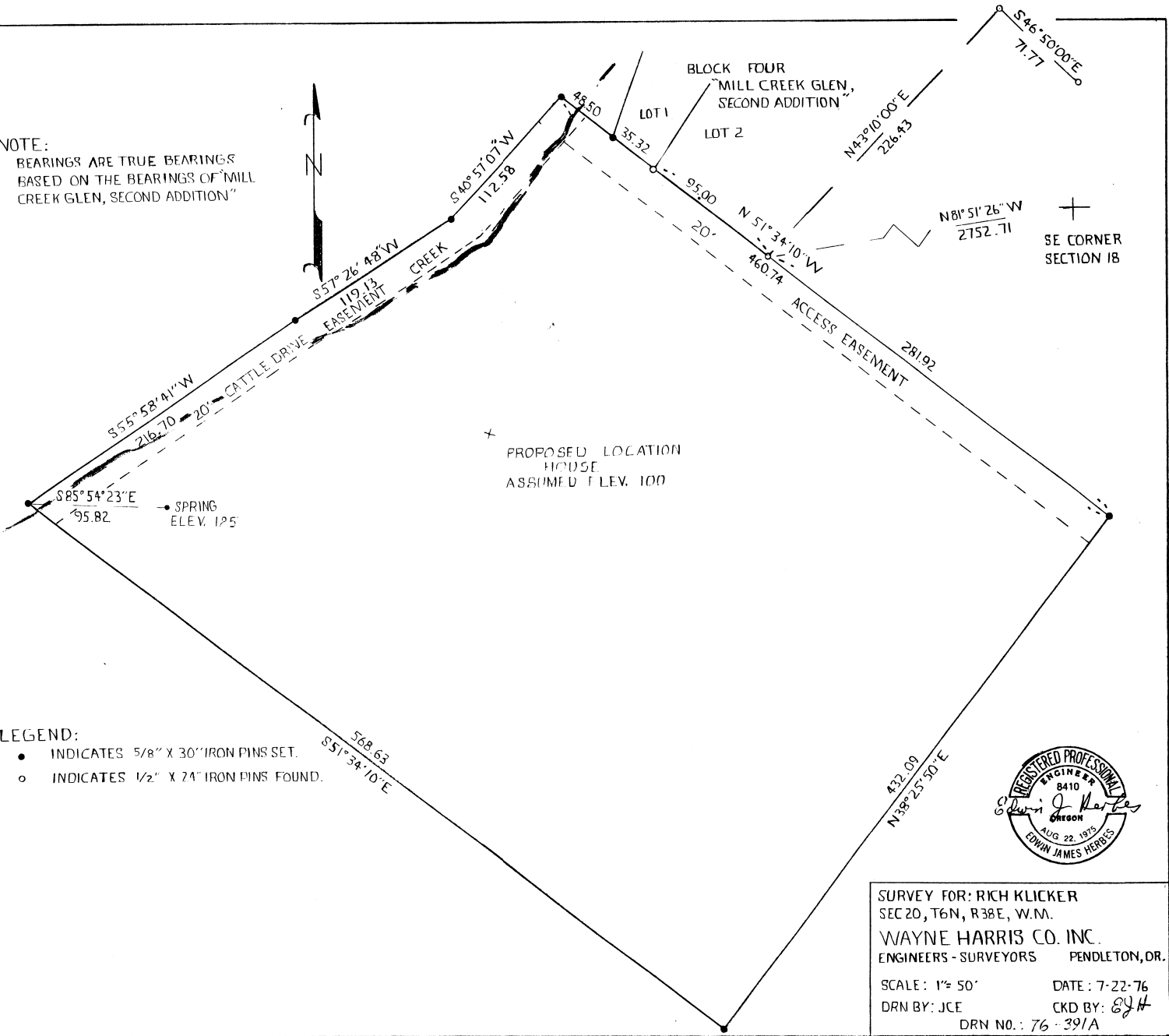


NOTE:
BEARINGS ARE TRUE BEARINGS
BASED ON THE BEARINGS OF "MILL
CREEK GLEN, SECOND ADDITION"



- LEGEND:
- INDICATES 5/8" X 30" IRON PINS SET.
 - INDICATES 1/2" X 24" IRON PINS FOUND.



SURVEY FOR: RICH KLICKER
SEC 20, T6N, R38E, W.M.
WAYNE HARRIS CO. INC.
ENGINEERS - SURVEYORS PENDLETON, OR.
SCALE: 1" = 50' DATE: 7-22-76
DRN BY: JCE CKD BY: *EJH*
DRN NO.: 76-391A

RECEIVED BY
Opattila County Surveyor
Date: 4-93
File: RR
No. 7325B