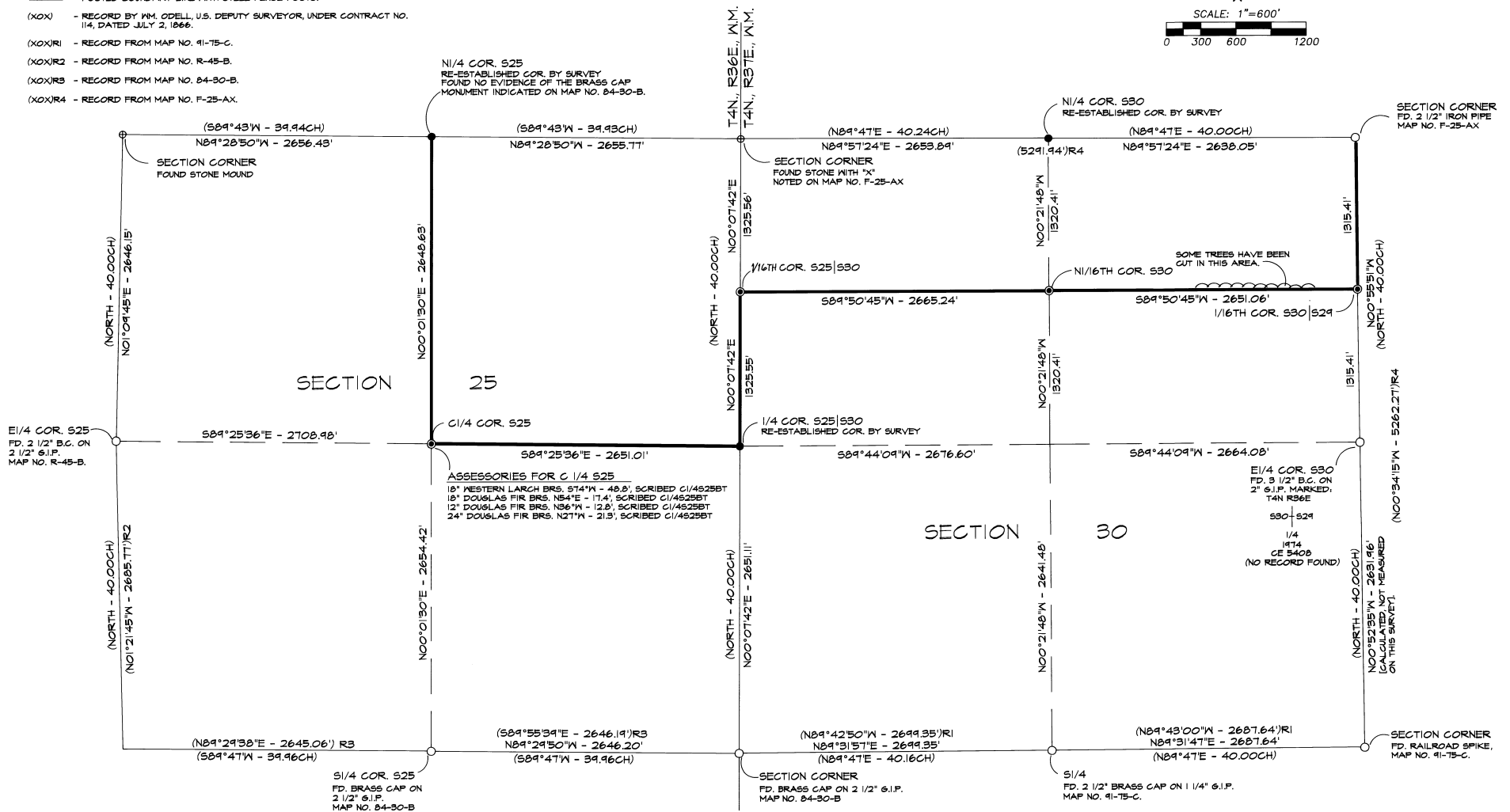
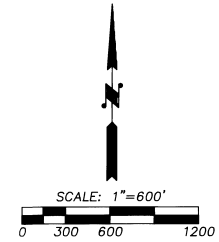


# LEGEND

- - FOUND MONUMENT AS NOTED.
- ⊕ - FOUND EVIDENCE AND REMONUMENTED WITH A 2 1/2" BRASS CAP ON A 1 1/4" X 30" GALV. IRON PIPE. SEE CORNER RECORD FILED SEPARATELY.
- - SET CORNER BY SURVEY AND MONUMENTED WITH A 2 1/2" BRASS CAP ON A 1 1/4" X 30" GALV. IRON PIPE. SEE CORNER RECORD FILED SEPARATELY.
- ⊙ - SET 5/8" X 30" IRON PIN BY SURVEY AND GAPPED WITH A YELLOW PLASTIC CAP MARKED "W.R. WELLS, FLS. 1106".
- - POSTED BOUNDARY LINE WITH STEEL FENCE POSTS.
- (XOX) - RECORD BY W.M. ODELL, U.S. DEPUTY SURVEYOR, UNDER CONTRACT NO. 114, DATED JULY 2, 1966.
- (XOX)R1 - RECORD FROM MAP NO. 91-75-C.
- (XOX)R2 - RECORD FROM MAP NO. R-45-B.
- (XOX)R3 - RECORD FROM MAP NO. 84-30-B.
- (XOX)R4 - RECORD FROM MAP NO. F-25-AX.



## NARRATIVE OF SURVEY

THE PURPOSE OF THIS SURVEY WAS TO PARTIALLY SUBDIVIDE SECTION 25, T4N., R36E., W.M., AND SECTION 30, T4N., R37E., W.M. CONTROLLING CORNERS USED FOR THE SURVEY ARE SHOWN ON THIS PLAT. LAND CORNER RECORD CERTIFICATES ARE FILED SEPARATELY FOR REMONUMENTED PUBLIC LAND SURVEY CORNERS.

BEARINGS ARE BASED ON A SOLAR OBSERVATION (ALTITUDE METHOD), TAKEN 100 FEET SOUTH OF THE NORTHEAST CORNER OF SECTION 30.

POSTED BOUNDARIES ARE MARKED WITH 6 FOOT STEEL FENCE POSTS SET AT RANDOM INTERVALS OF APPROXIMATELY 200 TO 300 FEET. STEEL FENCE POSTS ARE SET NEAR EACH REMONUMENTED OR ESTABLISHED CORNER WITH "WITNESS CORNER" SIGN ATTACHED.

THIS SURVEY WAS MADE WITH A 2 PERSON CREW USING A LIETZ SET 3-B TOTAL STATION AND SDR-22 ELECTRONIC FIELD BOOK. MEASUREMENTS TO ACCESSORIES ON MONUMENTED CORNERS WERE TAKEN WITH A STEEL TAPE AND BRUNTON POCKET TRANSIT OR HAND COMPASS. MAGNETIC DECLINATION USED WAS 18' EAST. MEASUREMENTS TO NEW BEARING TREES WERE TAKEN TO THE CENTER OF THE TREE AT ROOT CROWN.

RECEIVED  
Umatilla County  
Date: 7-12  
Rec'd By: [Signature]  
No. 92-79-6

REGISTERED  
PROFESSIONAL  
LAND SURVEYOR

OREGON  
JULY 22, 1977  
WILLIAM R. WELLS  
1106

WILLIAM R. WELLS, PLS  
357 N.E. HWY. 11  
P.O. BOX 1696  
PENDLETON, OR 97801  
PHONE: (503) 276-6362

DATE: 7/13/92 DR. BY: WR  
CK. BY: WRW NO: 42-141

PROJECT:  
SURVEY FOR  
ANNA JANE & LES CLARK  
SECTION 25, T4N., R36E., W.M.  
SECTION 30, T4N., R37E., W.M.  
UMATILLA COUNTY, OREGON.

CLARK