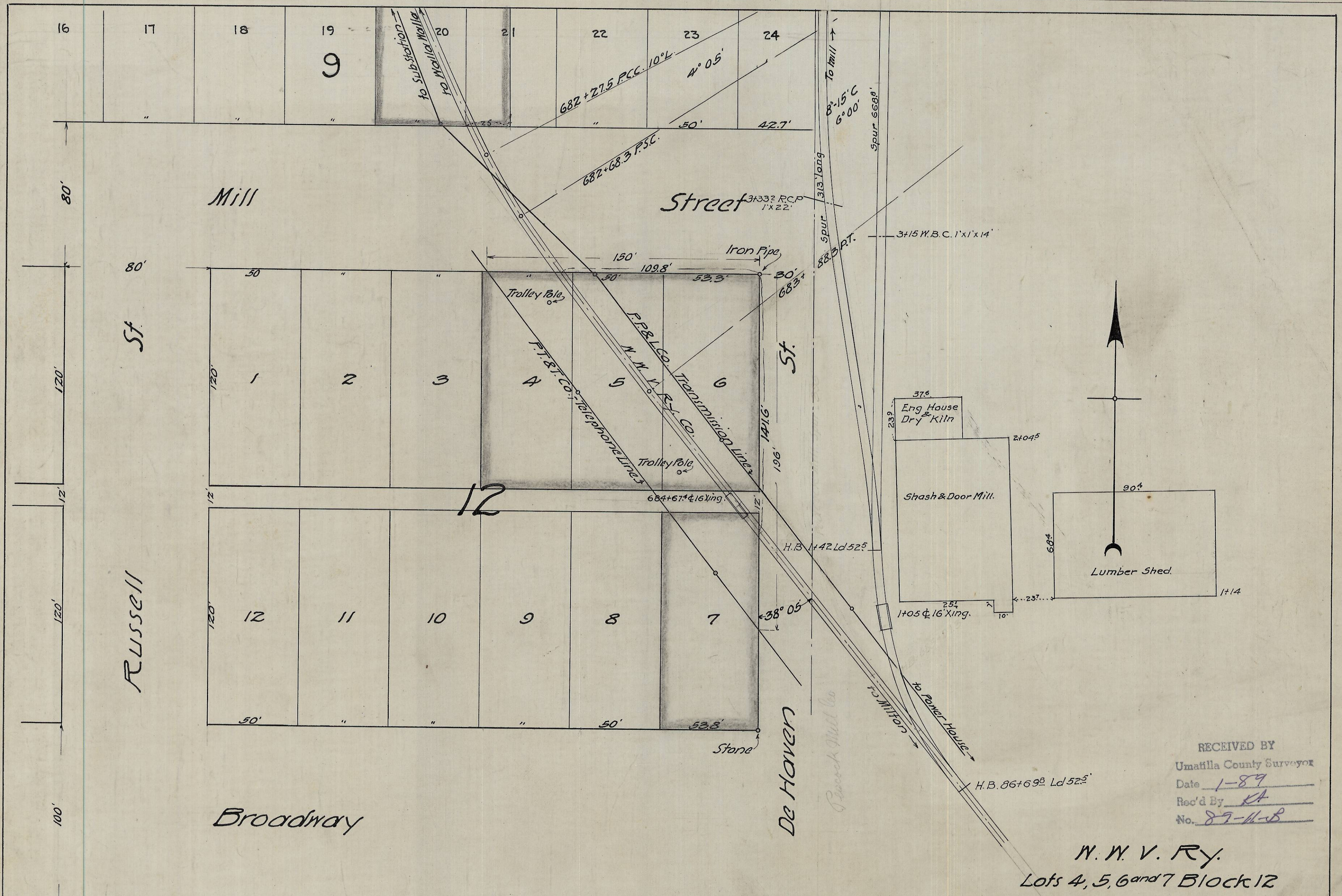


500-2



Made at Portland, Ore.
 Wm. H. Galvani, Engineer
 J. H. Moore, Chief of Party

DRAWN	R.L.S.	Mch	1912
TRACED	"	"	1912
CHECKED	"	"	1912
APPROVED	W.H.M.	"	1912

Prop. R/W & Tax Dept.

Revised in 1922 to show new spur +
 Extn of old spur

RECEIVED BY
 Umatilla County Surveyor
 Date 1-89
 Rec'd By RT
 No. 89-11-B

N. W. V. Ry.
 Lots 4, 5, 6 and 7 Block 12
 Wrights Addition to North Milton
 Umatilla County, Oregon

PACIFIC POWER & LIGHT COMPANY
 PORTLAND, OREGON

SCALE 1 inch = 40 feet

PC-1034