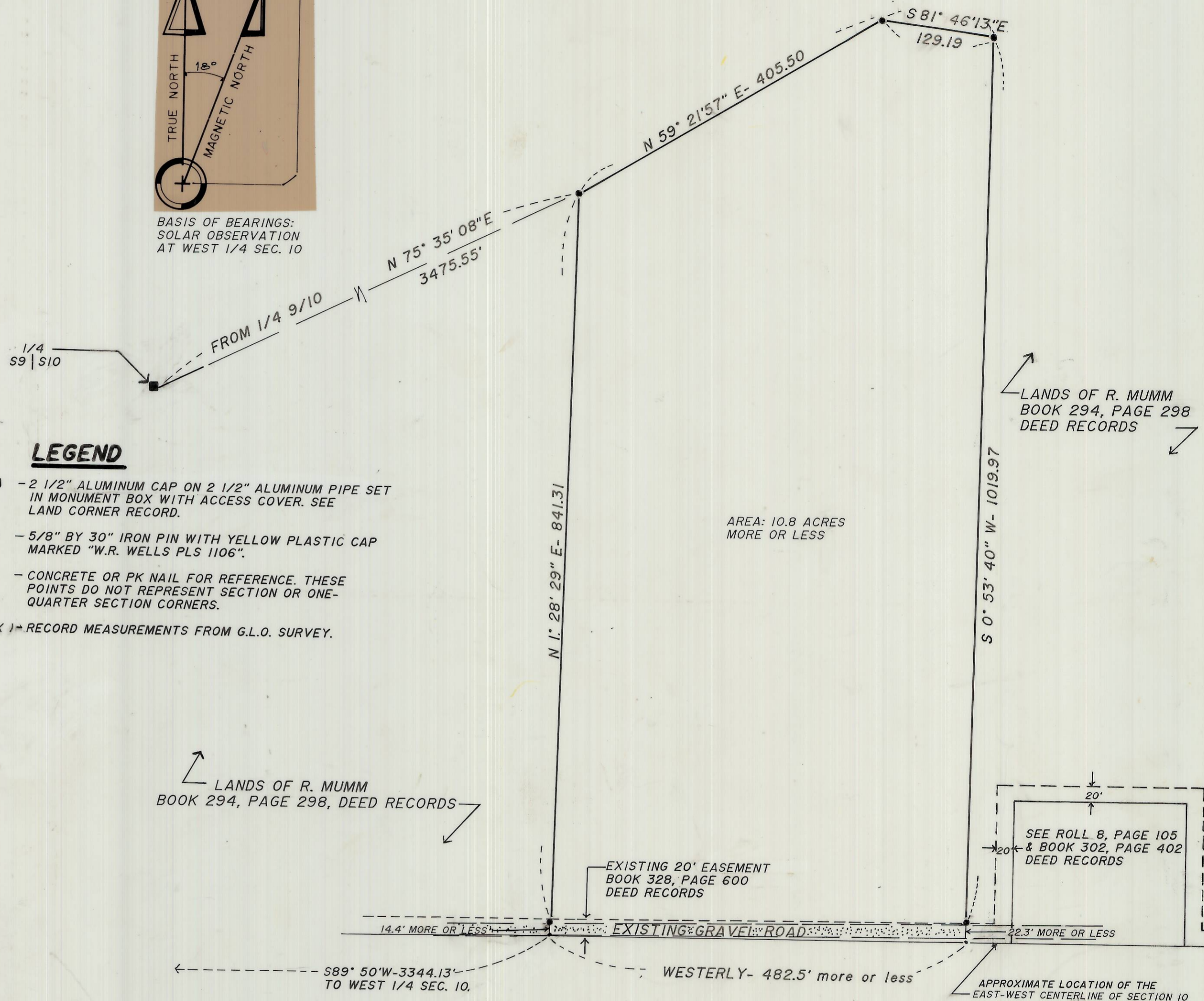


- LEGEND**
- - 2 1/2" ALUMINUM CAP ON 2 1/2" ALUMINUM PIPE SET IN MONUMENT BOX WITH ACCESS COVER. SEE LAND CORNER RECORD.
  - - 5/8" BY 30" IRON PIN WITH YELLOW PLASTIC CAP MARKED "W.R. WELLS PLS 1106".
  - - CONCRETE OR PK NAIL FOR REFERENCE. THESE POINTS DO NOT REPRESENT SECTION OR ONE-QUARTER SECTION CORNERS.
- (XOX) = RECORD MEASUREMENTS FROM G.L.O. SURVEY.



**NARRATIVE OF SURVEY**

THE PURPOSE OF THIS SURVEY WAS TO LOCATE AND MONUMENT A 10.8 ACRE SITE WHICH CONTAINS THE HOUSE AND OUTBUILDINGS OWNED AND OCCUPIED BY BOB MUMM.

COUNTY RECORDS INDICATE ONLY 2 ORIGINAL GOVERNMENT SECTION AND ONE-QUARTER CORNERS BEING RECOVERED AND REMONUMENTED SINCE THE ORIGINAL GOVERNMENT SURVEYS IN THE 1860'S. TO REESTABLISH THE POSITION OF A GOVERNMENT CORNER TO REFERENCE THE SURVEY TO, MEASUREMENTS WERE MADE ALONG THE NORTH-SOUTH ALIGNMENT OF STATE HIGHWAY NO. 37, NOTING PHYSICAL EVIDENCE SUCH AS ROAD INTERSECTIONS, FENCES AND FIELD LINES. USING THESE MEASUREMENTS, THE POSITION OF THE ONE-QUARTER CORNER COMMON TO SECTIONS 9 AND 10 WAS RE-ESTABLISHED. SEE CORNER RECORD FILED SEPARATELY FOR THIS CORNER.

FIELD WORK WAS DONE WITH A 2 PERSON CREW USING A 20 SECOND THEODOLITE, STEEL TAPE, AND INFRA-RED DISTANCE MEASURING EQUIPMENT.

BEARINGS ARE BASED ON A SOLAR OBSERVATION TAKEN AT THE WEST ONE-QUARTER CORNER OF SECTION 10.

RECEIVED BY  
Umatilla County Surveyor  
Date 4-88  
Rec'd By KA  
No. 88-18-B

REGISTERED  
PROFESSIONAL  
LAND SURVEYOR  
*William R. Wells*  
OREGON  
JULY 22, 1977  
WILLIAM R. WELLS  
1106

WILLIAM R. WELLS, PLS  
LAND SURVEYING SERVICES  
P.O. BOX 1696  
PENDLETON, OREGON 97801  
PHONE: 503 276 6362

PROJECT:  
BOB MUMM SURVEY  
LOCATED IN THE NE 1/4  
OF SECTION 10, T.3N R.32E,  
W.M., UMATILLA COUNTY, OR.

Date: 3-4-88 Dr. By: JMW  
Ck. By: \_\_\_\_\_ No: 8-36