

①  
T4N R37E  
S34|S35  
S3|S2  
T3N  
1980

SECTION CORNER TO SECTIONS 34 & 35, T4N R37E, AND TO SECTIONS 2 & 3, T3N, R37E.  
FOUND 2 1/2" IRON PIPE WITH 3/4" B.L.M. BRASS CAP, MARKED AS SHOWN  
5" ABOVE GROUND, GOOD CONDITION, FROM WHICH:  
OBT, 27" FIR, ON GROUND, PARTLY HEALED, ROTTED FACE, AND ROOT HOLE, BEARS N40°W, 35.0 FT. (N40°W, 53 LKS.)  
OBT, 31" FIR SNAG, OPENED BLAZE, NO MARKS VISIBLE, BEARS S40°W, 19.5 FT. (S40°W, 30 LKS.)  
20" SPRUCE, SCRIBES T3N R37E S3 BT" VISIBLE ON OPEN FACE, BEARS S51 1/2°W, 12.5 FT. (S51 1/2°W, 19 1/2 LKS.)  
10" SPRUCE, SCRIBES T4N R37E S34 BT" VISIBLE ON OPEN FACE, BEARS N18 1/2°W, 42.0 FT. (N18 1/2°W, 64 1/2 LKS.)  
16" SPRUCE, PITCHED OVER OPEN FACE, BEARS N17 3/4°E, 36.4 FT. (N17 3/4°E, 52 1/2 LKS.)  
16" SPRUCE, PITCHED OVER OPEN FACE, BEARS S33 3/4°E, 18.8 FT. (S33 3/4°E, 28 1/2 LKS.)

②  
T3N R37E  
1/4  
S3|S2  
1986  
PLS 934

1/4 CORNER TO SECTIONS 2 & 3, T3N R37E  
NO EVIDENCE OF ORIGINAL CORNER FOUND.  
AT PROPORTIONED LOCATION I SET A 2" X 30" ALUMINUM PIPE WITH A 2 1/2" AL. CAP, MARKED AS SHOWN, 24" IN GROUND, IN A MOUND OF STONE. I ESTABLISHED 2 NEW B.T.'S AS FOLLOWS:  
13" FIR, SCRIBED 1/4 S3 BT" BEARS N50 1/4°W, 18.0 FT.  
16" FIR, SCRIBED 1/4 S2 BT" BEARS N76 1/4°E, 19.3 FT.

③  
T3N R37E  
S3|S2  
S10|S11  
1980

SECTION CORNER TO SECTIONS 2, 3, 10 & 11, T3N R37E  
FOUND 2 1/2" IRON PIPE WITH 3/4" B.L.M. BRASS CAP, MARKED AS SHOWN, 6" ABOVE GROUND, GOOD CONDITION, FROM WHICH:  
OBT, 32" LARCH SNAG, DECAYED FACE WITH PARTIAL SCRIBES, BEARS S41°W, 48.2 FT. (S41°W, 73 LKS.)  
OBT, 27" LARCH STUMP, NO MARKS VISIBLE, BEARS N3°W, 77.9 FT. (N3°W, 118 LKS.)  
14 1/2" FIR, OPEN, PARTLY HEALED FACE, SCRIBES T3N R37E S2 BT" VISIBLE, BEARS N22 1/2°E, 4.3 FT. (N22 1/2°E, 6 1/2 LKS.)  
13" LARCH, OPEN PARTLY HEALED FACE, SCRIBES T3N R37E S11 BT" VISIBLE, BEARS S38 1/2°E, 65.7 FT. (S38 1/2°E, 99 1/2 LKS.)  
12" LARCH SNAG, OPEN FACE, SCRIBES T3N R37E S10 BT" VISIBLE, BEARS S66°W, 35.0 FT. (S66°W, 53 LKS.)  
13" FIR, OPEN FACE, SCRIBES T3N R37E S3 BT" VISIBLE, BEARS N61 1/4°W, 13.5 FT. (N61 1/4°W, 20 1/2 LKS.)

④  
T3N R37E  
1/4  
S2  
S11  
1986  
PLS 934

1/4 CORNER TO SECTIONS 2 & 11, T3N, R37E  
NO EVIDENCE OF ORIGINAL CORNER FOUND  
AT PROPORTIONED LOCATION I SET A 2" X 30" ALUMINUM PIPE WITH A 2 1/2" AL. CAP, MARKED AS SHOWN, 28" IN GROUND.  
I ESTABLISHED 2 NEW B.T.'S AS FOLLOWS:  
18" FIR, SCRIBED 1/4 S11 BT" BEARS S74°E, 49.7 FT.  
6 1/2" SPRUCE, SCRIBED 1/4 S2 BT" BEARS N44°W, 3.0 FT.

⑤  
T3N R37E  
S2|S1  
S11|S12  
RPE 2808  
1976

SECTION CORNER TO SECTIONS 1, 2, 11, & 12, T3N, R37E  
FOUND 2" IRON PIPE WITH 2 1/2" BRASS CAP, MARKED AS SHOWN, IN A STONE MOUND.  
FOUND 4 O.B.T.'S IN GOOD CONDITION AS FOLLOWS:  
30" FIR, HEALED BLAZE, BEARS S46°E, 16.8 FT.  
29" FIR, HEALED BLAZE, BEARS S40°W, 9.9 FT.  
34" FIR, HEALED BLAZE, BEARS N35°W, 22.4 FT.  
22" FIR, BLAZE PARTLY CHOPPED OPEN, SCRIBES "S1" VISIBLE, BEARS N14°E, 46.2 FT.

**HISTORY OF SURVEYS:**

ALL CORNERS SHOWN ON THIS PLAT WERE ORIGINALLY ESTABLISHED BY GEORGE S. PERSHIN, U.S. DEPUTY SURVEYOR, IN 1879.  
THE SECTION CORNER TO SECTIONS 34, 35, 2 & 3 AND THE SECTION CORNER TO SECTIONS 2, 3, 10 & 11 WERE REMONUMENTED FROM ORIGINAL EVIDENCE BY THE B.L.M. IN 1980 UNDER SPECIAL INSTRUCTIONS, GROUP NUMBER 1000, DATED JULY 13, 1979.  
THE SECTION CORNER TO SECTIONS 1, 2, 11, & 12 WAS REMONUMENTED FROM ORIGINAL EVIDENCE BY JAMES D. HANLEY IN 1976 DURING A SURVEY FOR THE U.S. FOREST SERVICE.

**NARRATIVE:**

THE PURPOSE OF THIS SURVEY WAS TO MONUMENT THE TWO 1/4 CORNERS SHOWN ON THE PLAT AND TO POST THE LINE BETWEEN U.S. AND PRIVATE OWNERSHIP AS SHOWN ON THE PLAT. THE METHOD OF SURVEY WAS A CLOSED RANDOM TRAVERSE, USING A TOPCON GTS10D THEODOLITE WITH BUILT-IN ELECTRONIC DISTANCE METER. BOTH 1/4 CORNERS WERE SET BY SINGLE PROPORTIONMENT, SINCE NO EVIDENCE WAS FOUND AT EITHER CORNER.

**SURVEYOR'S CERTIFICATE:**

I, VICTOR M. MCLIND, A REGISTERED LAND SURVEYOR IN THE STATE OF OREGON, HEREBY CERTIFY THAT THIS PLAT AND THE NOTES HEREON OR ATTACHED CORRECTLY REPRESENT A SURVEY PERFORMED BY ME DURING JUNE 5-27, 1986, AT THE REQUEST OF THE USDA FOREST SERVICE IN ACCORDANCE WITH THE STATUTES OF THE STATE OF OREGON AND THE ARTICLES OF MY CONTRACT. *Victor M. McKind*  
VICTOR M. MCLIND, ORE. PLS # 934

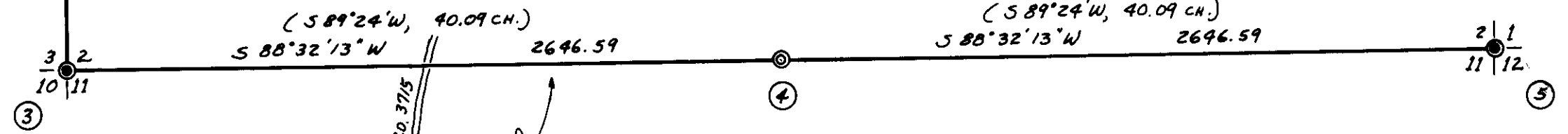
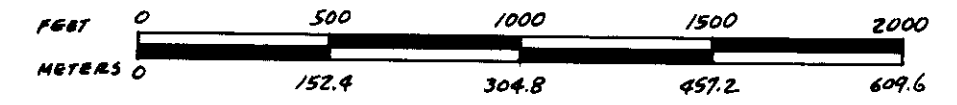
REGISTERED PROFESSIONAL LAND SURVEYOR  
*Victor M. McKind*  
OREGON JULY 17, 1980 VICTOR M. MCLIND 934

**LEGEND**

- ⊙ FOUND MONUMENTED CORNER, USED FOR CONTROL
- ⊙ SET 2" X 30" ALUMINUM PIPE WITH 2 1/2" ALUMINUM CAP BY PROPORTIONMENT
- BOUNDARY OF FOREST SERVICE LAND, POSTED WITH 6 FT. STEEL POSTS AND SIGNS S4-2 DURING THIS SURVEY.
- ( ) BRACKETS INDICATE G.L.O. RECORD.

MEAN MAGNETIC DECLINATION: 18°00' E.

SCALE: 1" = 500'



NOTE: TIMBER CUTTING ENCROACHMENT ON U.S. LAND WAS OBSERVED ALONG THE LINE BETWEEN SECTIONS 2 & 11, IN THE AREA BETWEEN RD. 3715 AND THE 1/4 CORNER. THIS CUTTING TOOK PLACE DURING THE COURSE OF OUR SURVEY IN JUNE, 1986. APPROXIMATELY 33 TREES OF 10 INCH DIAMETER OR LARGER WERE CUT FROM U.S. LAND IN SECTION 11.

RECEIVED BY  
Umatilla County Surveyor  
Date 7-8-86  
Rec'd By KA  
No. 86-85-28

RECORD OF SURVEY  
FOR UMATILLA NATIONAL FOREST  
ARTHUR 1986 CADASTRAL SURVEY

LOCATED IN  
T. 3 N., R. 37 E., WILLAMETTE MERIDIAN, UMATILLA COUNTY, ORE.  
SURVEYED BY VICTOR MCLIND, MILTON-FREEWATER, OREGON  
JUNE 5-27, 1986  
CONTRACT NO. 00-04R3-6-55

BEARINGS ARE OREGON STATE PLANE COORDINATE SYSTEM GRID BEARINGS (NORTH ZONE) AND WERE CALCULATED FROM SOLAR OBSERVATIONS TAKEN ON JUNE 23, 1986. TRUE BEARINGS MAY BE OBTAINED BY ROTATING SHOWN BEARINGS RIGHT APPROXIMATELY 1°39'40\"/>