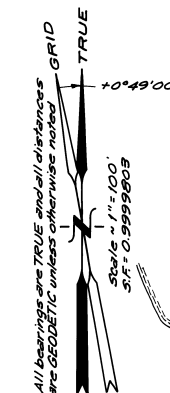
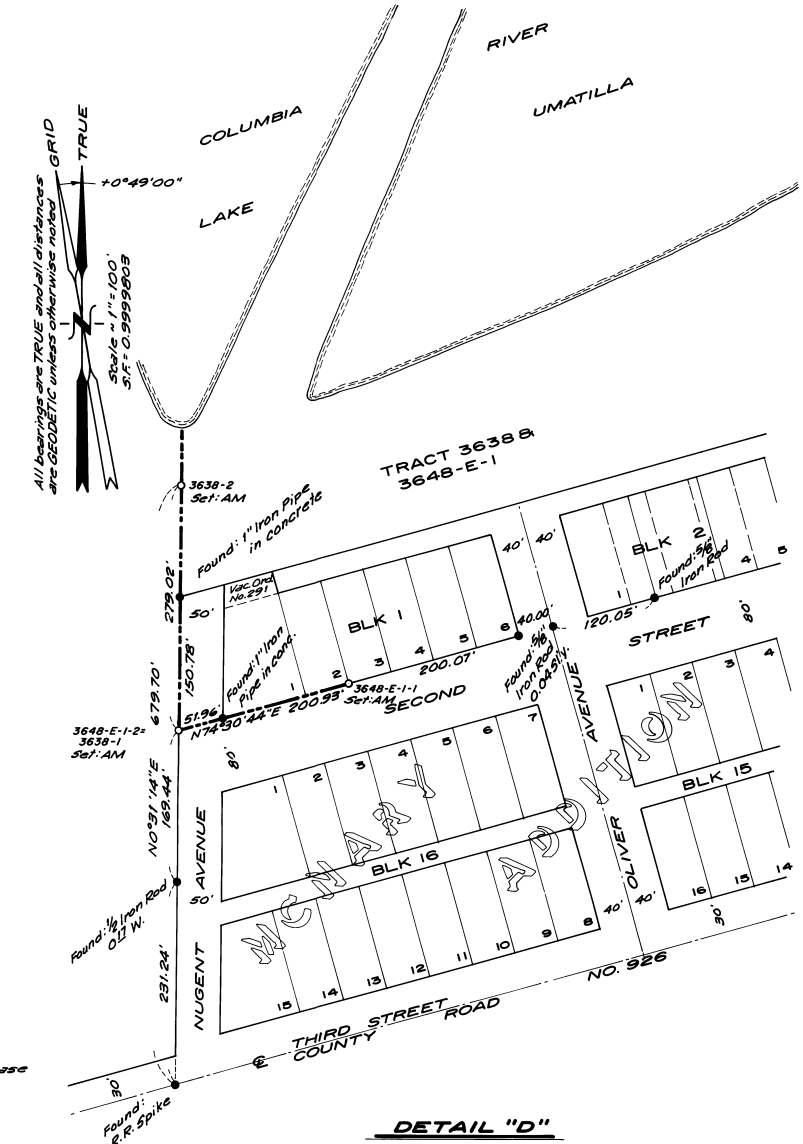


**DETAIL "C"**  
 Para. 2.15b

- LEGEND**
- Corner Set as indicated
  - AM = "Bernstein" Aluminum Monument w/ breakaway base
  - BD = 5 1/2" Bronze Disc grouted in rock
  - SK = 2" Aluminum "Surv-Kap" set on 5/8" x 30" Iron Rod
  - Monument Found as noted
  - ⊙ Public Land Survey Corner Found as noted
  - ⊠ Original G.L.D. Corner now lost and position derived from previous survey data
  - Corps Project Boundary
  - Right of Way Boundary
  - Extended Control Line
  - Centerline of Road
  - ( ) Record data per CS # L-79-C

REGISTERED PROFESSIONAL LAND SURVEYOR  
*[Signature]*  
 REGISTERED PROFESSIONAL LAND SURVEYOR  
 OREGON  
*[Signature]*



**DETAIL "D"**  
 Para. 2.17

**RECORD OF SURVEY**

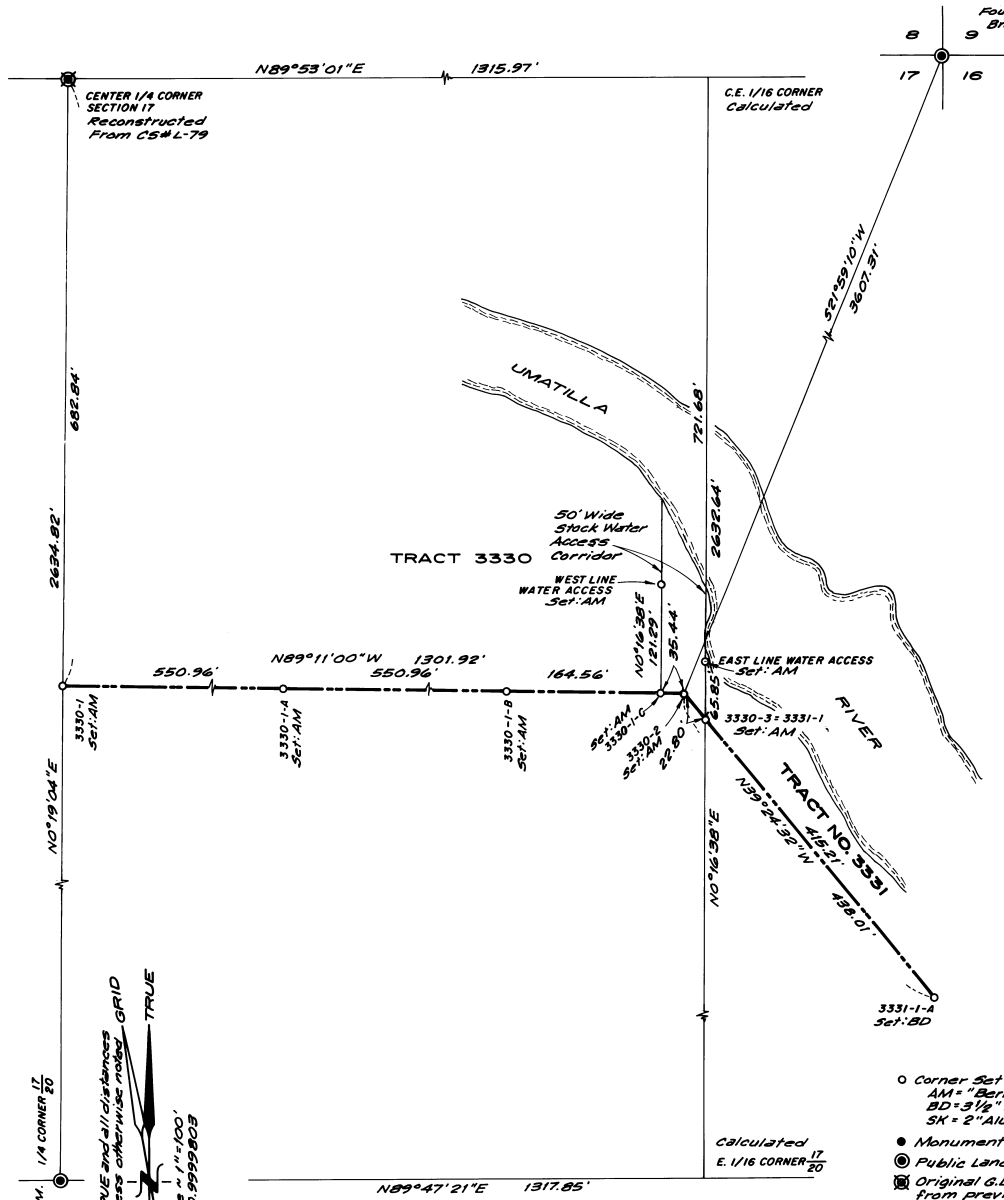
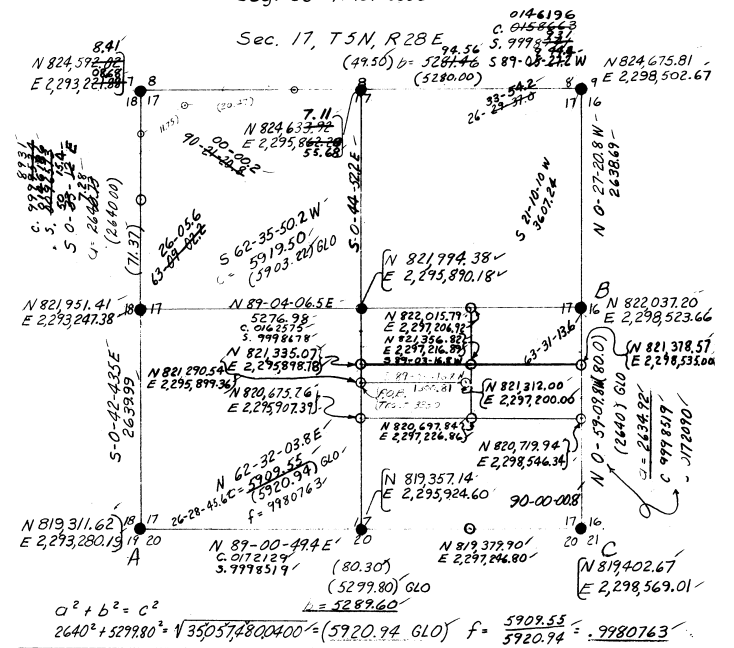
FOR: U.S. ARMY CORPS OF ENGINEERS  
 LOCATED IN SECTION 17, TOWNSHIP 5 NORTH, RANGE 28 EAST, W.M.,  
 CITY OF UMATILLA, UMATILLA COUNTY, OREGON

JULY 30, 1983 - OCTOBER 14, 1983

RECEIVED  
 12-83  
 No. 66 Para. 2.15b  
 83-201-B 2.17  
 JN 1815-1819  
 SHEET 3 OF 5

John Day Dam  
Boundary Surveys  
Seg. 33 Tract 3330

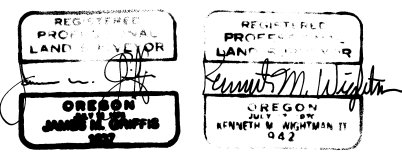
Sec. 17, T5N, R28E



**DETAIL "E"**

Para. 2.16b

- LEGEND**
- Corner Set as noted
  - AM = "Barrstein" Aluminum Monument w/breakaway base
  - BD = 3 1/2" Bronze Disc grouted in rock
  - SK = 2" Aluminum "Surv-Kap" set on 3/8" x 30" iron rod
  - Monument Found as noted
  - ⊙ Public Land Survey Corner Found as noted
  - ⊗ Original G.L.O. Corner now lost and position derived from previous survey data
  - Corps Project Boundary
  - Right of Way Boundary
  - - - - - Extended Control Line
  - Centerline of Road



**RECORD OF SURVEY**

FOR: U.S. ARMY CORPS OF ENGINEERS  
LOCATED IN SECTIONS 8,17&18, TOWNSHIP 5 NORTH, RANGE 28 EAST, W.M., CITY OF UMATILLA, UMATILLA COUNTY, OREGON

JULY 30, 1983 - OCTOBER 14, 1983

12-83  
02  
83-301-B

Para. 2.16b

1/4 CORNER 17  
Found: B.L.M. Brasscap 1975

1/4 CORNER 20  
Found: B.L.M. Brasscap 1975

Scale 1" = 100'  
SIT: C-9999B05

TRUE

All bearings are TRUE and all distances are GEODETIC unless otherwise noted. GRID

**OREGON NORTH ZONE  
LAMBERT COORDINATE DATA  
BOUNDARY COURSES WITH CORNER COORDINATES**

**SECTION CORNER & CONTROL  
MONUMENT COORDINATES**

**NARRATIVE**

Corner Monument	Bearing	Distance	Northing	Easting	STATION	NORTHING & BEARING	EASTING & DISTANCE		
3323-A	N88°00'41"E	3.650	821,075.959	2,293,253.882	C 1/4 Cor. Sec. 18	821,858.597 N88°00'41"E	2,290,585.370 2,662.681		
3323-1	N00°43'33"W	220.824	821,076.086	2,293,257.530	1/4 Cor. 18 17	821,950.998 N89°04'01"E	2,293,246.447 2,645.784		
3323-1-1			821,296.892	2,293,254.733	C 1/4 Cor. Sec. 17	821,994.084 N89°04'01"E	2,295,891.880 2,631.886		
Corner Monument	Bearing	Distance	Northing	Easting	1/4 Cor. 17 16	822,036.943 S00°34'48"E	2,298,523.418 2,630.404		
1/4 18 17	N58°42'53"W	321.835	821,950.998	2,293,246.447	Sec. Cor. <sup>17 16</sup> / <sub>20 21</sub>	819,406.674 S88°58'21"W	2,298,550.040 2,635.640		
3362-E-1-2			822,118.128	2,292,971.410	1/4 Cor. <sup>17</sup> / <sub>20</sub>	819,359.412 S88°58'21"W	2,295,914.824 2,635.374		
Corner Monument	Bearing	Distance	Northing	Easting	Sec. Cor. <sup>18 17</sup> / <sub>19 20</sub>	819,312.154 S89°15'15"W	2,293,279.873 5,305.779		
3362-E-2-2	N15°51'02"W	60.601	821,981.699	2,295,131.441	Sec. Cor. <sup>13 18</sup> / <sub>24 19</sub>	819,243.087 N00°48'11"W	2,287,974.543 2,526.129		
3362-E-2-1	S74°08'58"W	79.998	822,039.996	2,295,114.889	CH <sub>2</sub> M Mon. @ 13 18	821,768.968	2,287,939.141		
3362-E-2-3A	S74°08'58"W	147.481	822,018.146	2,295,037.932	1/4 Cor. 17 16	822,036.943 N00°27'24"W	2,298,523.418 2,638.231		
3362-E-2-3			821,977.865	2,294,896.059	Sec. Cor. <sup>8 9</sup> / <sub>17 16</sub>	824,675.090	2,298,502.394		
Corner Monument	Bearing	Distance	Northing	Easting	△ CH <sub>2</sub> M-906	819,753.686	2,288,241.983 (NEW)		
3648-E-1-1	S73°41'44"W	148.962	824,582.600	2,296,661.810	△ UMATILLA	819,125.620	2,293,095.820 (PUBLISHED)		
Fd 1"I.P. in Concrete	S73°41'44"W	51.960	824,540.780	2,296,518.839					
3648-E-1-2	N00°17'46"W	150.774	824,526.193	2,296,468.968					
Fd 1"I.P. in Concrete	N00°17'46"W	128.237	824,676.964	2,296,468.189					
3638-2			824,805.200	2,296,467.539					
Corner Monument	Bearing	Distance	Northing	Easting	Corner Monument	Bearing	Distance	Northing	Easting
3330-1	S90°00'00"E	550.950	821,311.280	2,295,897.825	3330-1C	N00°32'22"W	121.290	821,311.280	2,297,164.285
3330-1A	S90°00'00"E	550.950	821,311.280	2,296,448.775	West Line Water Access			821,432.565	2,297,163.143
3330-1B	S90°00'00"E	164.560	821,311.280	2,296,999.725	3330-3 3331-1	N00°32'22"W	65.850	821,293.872	2,297,214.450
3330-1C	S90°00'00"E	35.440	821,311.280	2,297,164.285	East Line Water Access			821,359.719	2,297,213.830
3330-2	S40°13'32"E	22.801	821,311.280	2,297,199.725					
3330-3 3331-1	S40°13'32"E	415.210	821,293.872	2,297,214.450					
3331-1A			820,976.856	2,297,482.592					

Brief History

Most of the areas of concern fall within early day platted subdivisions of Umatilla or additions to it. Numerous surveys through the years have restored or re-established all controlling corners of the sections involved (the most recent being BLM in 1975 - Frank Tuers).

In addition to monuments of record, the Corps of Engineers has monuments (not of record) near most of their project boundary.

What Was Found

As indicated on the record of survey, we found a number of monuments at each location which helped us to delineate the government's ownership.

The section corner 17|16 as set by the BLM in 1975 falls under water currently. In calculation of the position for it, I chose to hold the given distance from the reference monument and a bearing from 1/4 17 so as not to cause a kink in the line at the 1/4 20 corner.

No unusual circumstances were encountered and all tracts as surveyed matched reasonably close with usage.

Tract 3330 and 3331 did have a quirk in the deed in that the beginning call is grid information without so stating in the document. We were fortunate to get a copy of the Corps worksheet which helped shed some light on the creation of that particular description. (We herewith are including it as part of our narrative for the benefit of all.)

Conclusions

In the area of 9th and I Streets we were fortunate to have a fairly recent record by Anderson and Perry (CS#1-79) which we used to reconstruct the center 1/4 corner of Section 17 and thus preserve the integrity of those prior surveys and plats that had tied to it.

Tract 3362-E-1 at 7th and B Streets has need of a correction in the distance called for in the deed as it goes north (from the East-West centerline of Section 18) along the center of B Street. The document (Book 282 Page 323 UCDR) clearly states up front that the intent is to acquire... "that portion of Lot 8 in Block 42"... as depicted in the detail. That distance north more nearly wants to be 148.65 feet.

General Information

Basis for bearings was established by utilizing published Lambert Coordinates Oregon North Zone data for station "CH<sub>2</sub>M-906" and station "Umatilla". Grid scale factor and theta angle rotation was based at station "Umatilla". Bearings as shown on the plat have been rotated to true north and distances are geodetic.

Discrepancies between our monuments and previous recorded and unrecorded monuments are shown on the face of the plat.

We set a six foot steel fence post with a witness plaque attached at all Public Land Survey corners and project boundary corners shown as set or found on the Record of Survey.

There are no visible encroachments other than what is depicted on the Record of Survey.

**RECORD OF SURVEY**

**FOR: U.S. ARMY CORPS OF ENGINEERS**  
LOCATED IN SECTIONS 8,17&18, TOWNSHIP 5 NORTH, RANGE 28 EAST, W.M., CITY OF UMATILLA, UMATILLA COUNTY, OREGON

JULY 30, 1983 - OCTOBER 14, 1983

