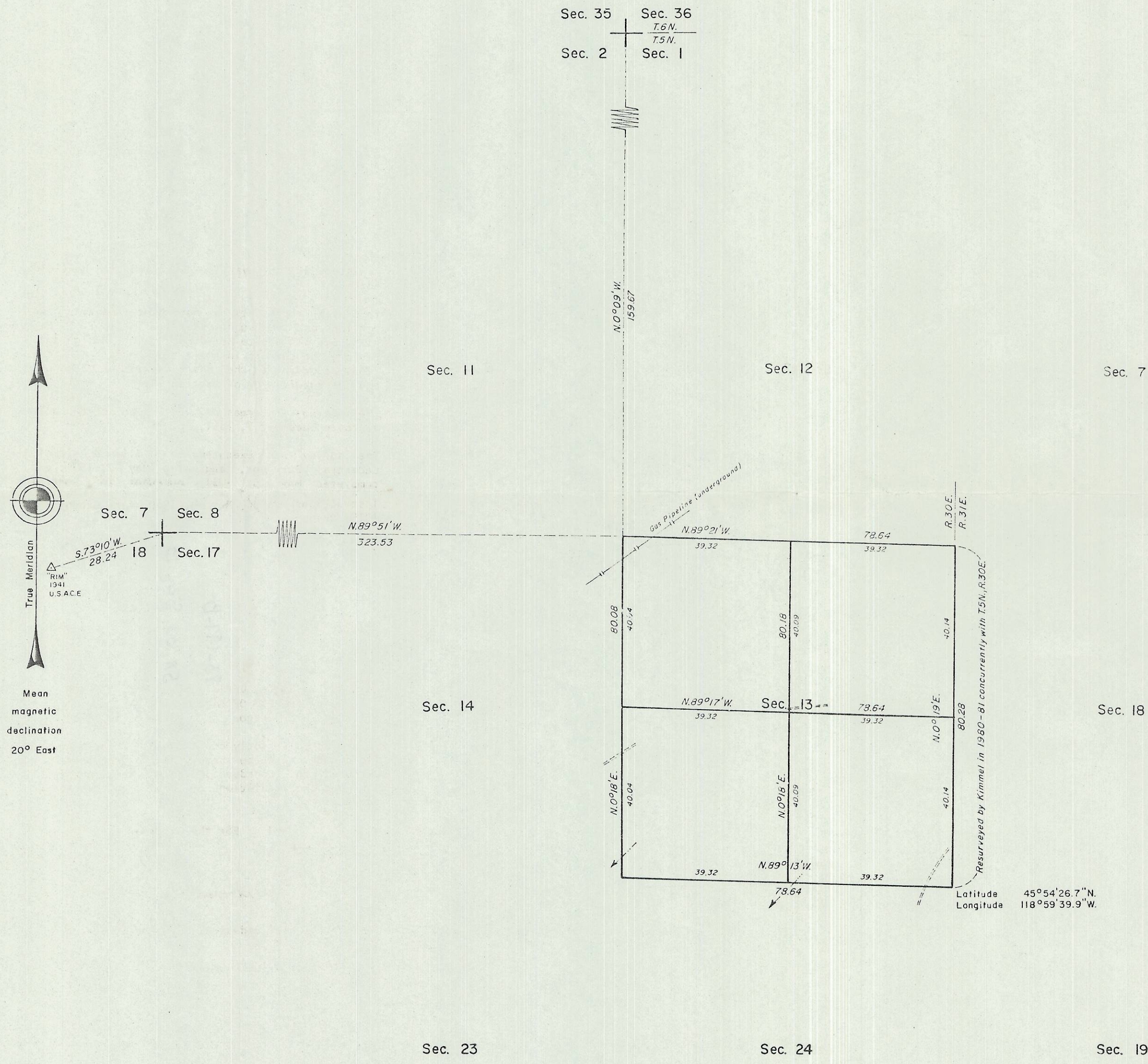


TOWNSHIP 5 NORTH, RANGE 30 EAST, OF THE WILLAMETTE MERIDIAN, OREGON.

DEPENDENT RESURVEY AND SUBDIVISION OF SECTION 13



A history of surveys is contained in the field notes.

This plat represents a dependent resurvey of a portion of the subdivisional lines, T. 5 N., R. 30 E., Willamette Meridian, Oregon, designed to restore the corners in their true original locations according to the best available evidence, and the subdivision of section 13.

The lottings and areas are as shown on the plat approved December 7, 1861.

The survey was executed by William D. Kimmel, Cadastral Surveyor, beginning May 7, 1981 and completed May 15, 1981, pursuant to Special Instructions dated May 14, 1980, for Group No. 1015, Oregon.

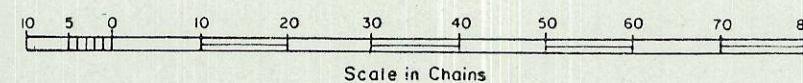
UNITED STATES DEPARTMENT OF THE INTERIOR
BUREAU OF LAND MANAGEMENT
Portland, Oregon October 14, 1983

This plat is strictly conformable to the approved field notes, and the survey, having been correctly executed in accordance with the requirements of law and the regulations of this Bureau, is hereby accepted.

For the Director

William W. Glenn

Chief Cadastral Surveyor of Oregon



gee

RECEIVED BY
 Umatilla County Surveyor
 Date 11-83
 Rec'd By B.C.
 No. 83-199-B