

Field Notes

RECEIVED BY

Umatilla County Surveyor

Date _____

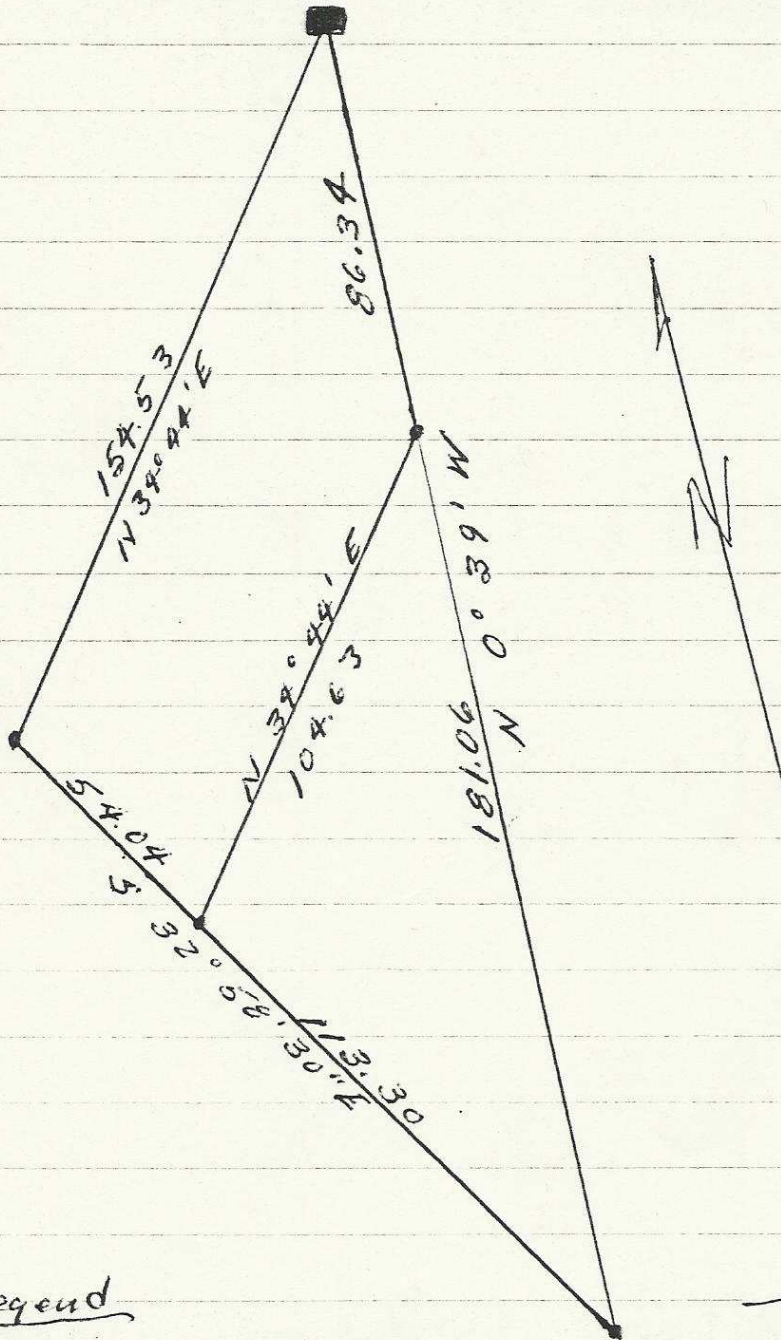
Rec'd by _____

No. R-130-Ae

By: Tenneson & Associates

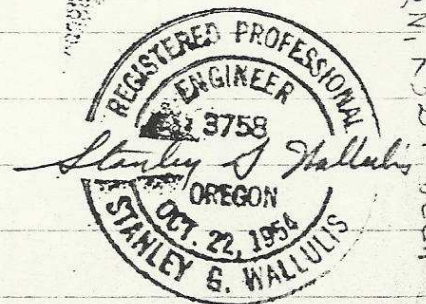
Date: Nov. 19, 1956 - Cold, Clear

Location: Lot 11 Mt Hebron 2nd Addition to
Umatilla County in Sec 1, Twp 2N R 32 E W 1M



Legend

- - Initial Point
- - Pins set



R-130-Ax

416

CR

R-130-Ax