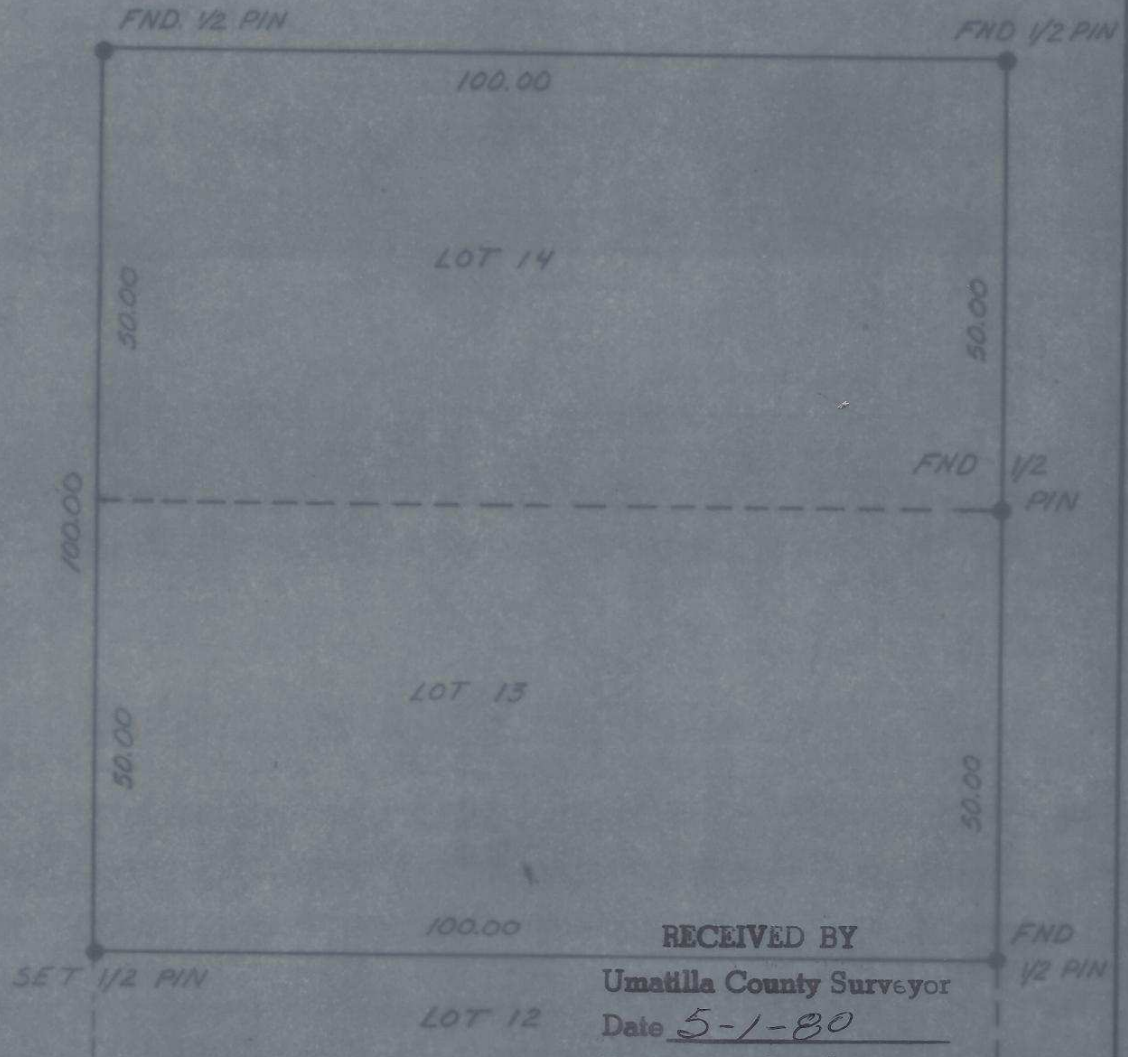
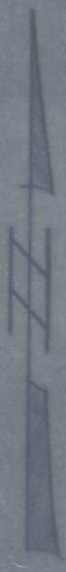


SE. 13<sup>th</sup> STREET



RECEIVED BY  
 Umatilla County Surveyor  
 Date 5-1-80  
 Rec'd By ELS  
 No. R-69-Ax

REGISTERED  
 PROFESSIONAL  
 LAND SURVEYOR  
*David H. Krumbein*  
 OREGON  
 JULY 17, 1970  
 DAVID H. KRUMBEIN  
 833

**KRUMBEIN ENGINEERING CO.**  
 ENGINEERS - SURVEYORS - PLANNERS  
 216 SE. 1st, Pendleton, Oregon

---

SURVEY FOR  
**MAYFIELD**  
 LOT 14 + 13 BLOCK 165  
 RESERVATION ADD. PENDLETON

SCALE	1" = 20'
DATE	18 MAR 77
CHK BY	T.H.
CRD BY	D.H.K.
ORIG. NO.	77-344

R-69-Ax