

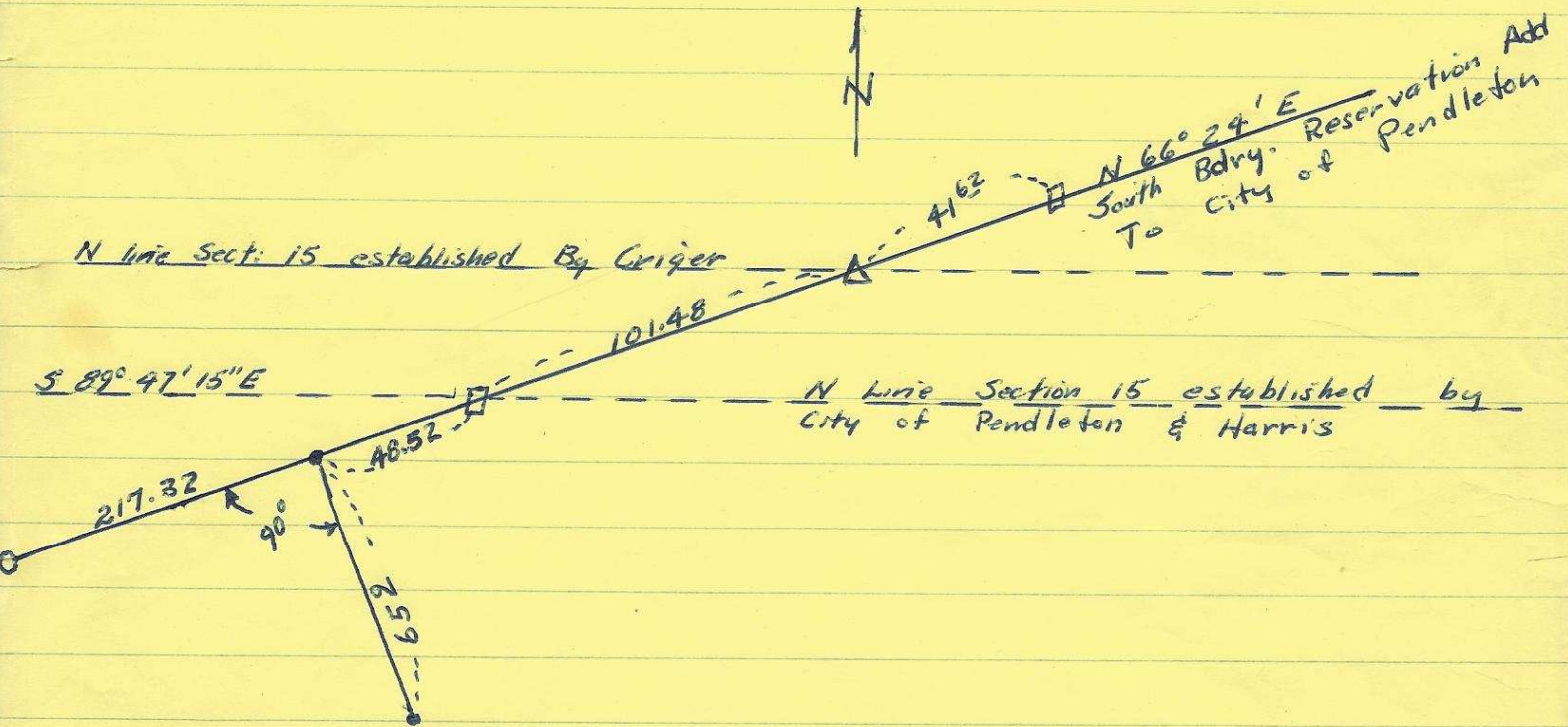
Field Notes (Incompleted Survey)

By: Vernon B. Tenneson & Associates

For: William Watkins

Date: Oct 8, 1956

Place: Sec 15, Twp 2 N, R 32 E W M abutting City of Pendleton



- - points ^(pins) found established by Harris
- - pins we set
- - line stakes we set.
- △ - Initial point of Gordon Tracts as established by William Criger Found to be 0°⁶⁹ southerly of Reservation Addition line

Stanley J. Halluk
 Registered Professional Engineer
 Registration 3758