

Q-353-AX ORIG

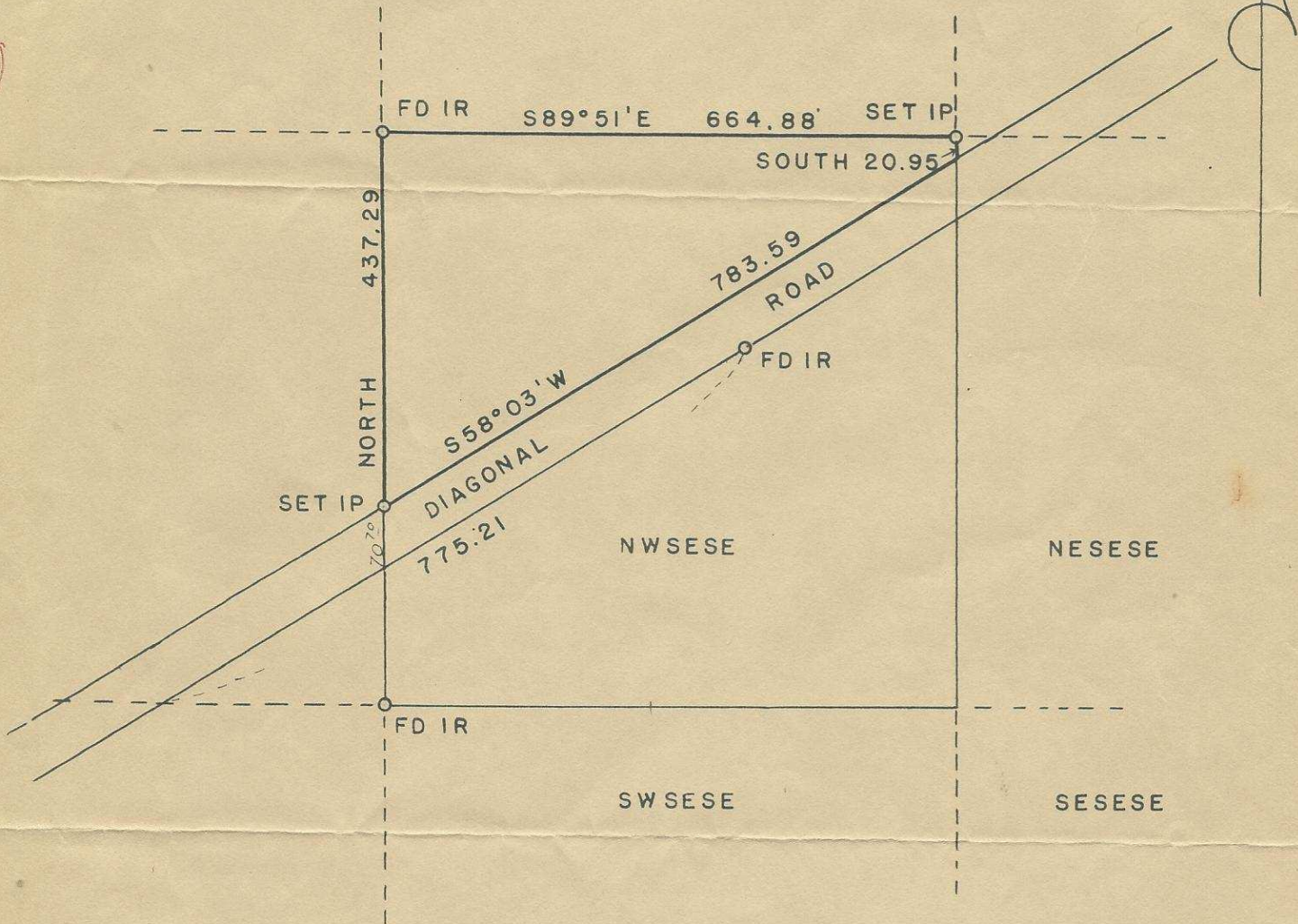
SURVEY FOR S.W. PIERCE

NWSESE N OF DIAGONAL ROAD SEC 1 4N 28E
IN UMATILLA CO., ORE

MAY 6, 1960

SCALE 1" = 200'

N



REGISTERED
OREGON
LAND SURVEYOR

Donald C. Kyle

OCTOBER 26
DONALD C. KYE
456

709