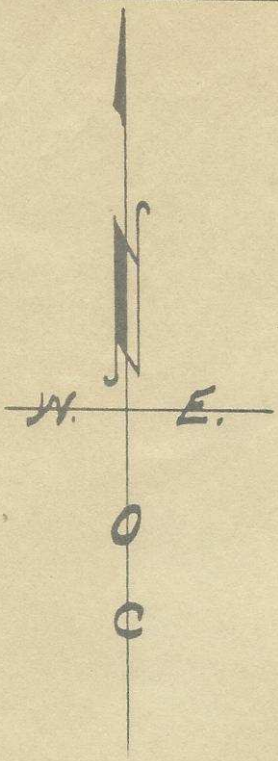


N. 0° 10' E

W. Line Sec. 5. To W 1/4 Cor.

11614

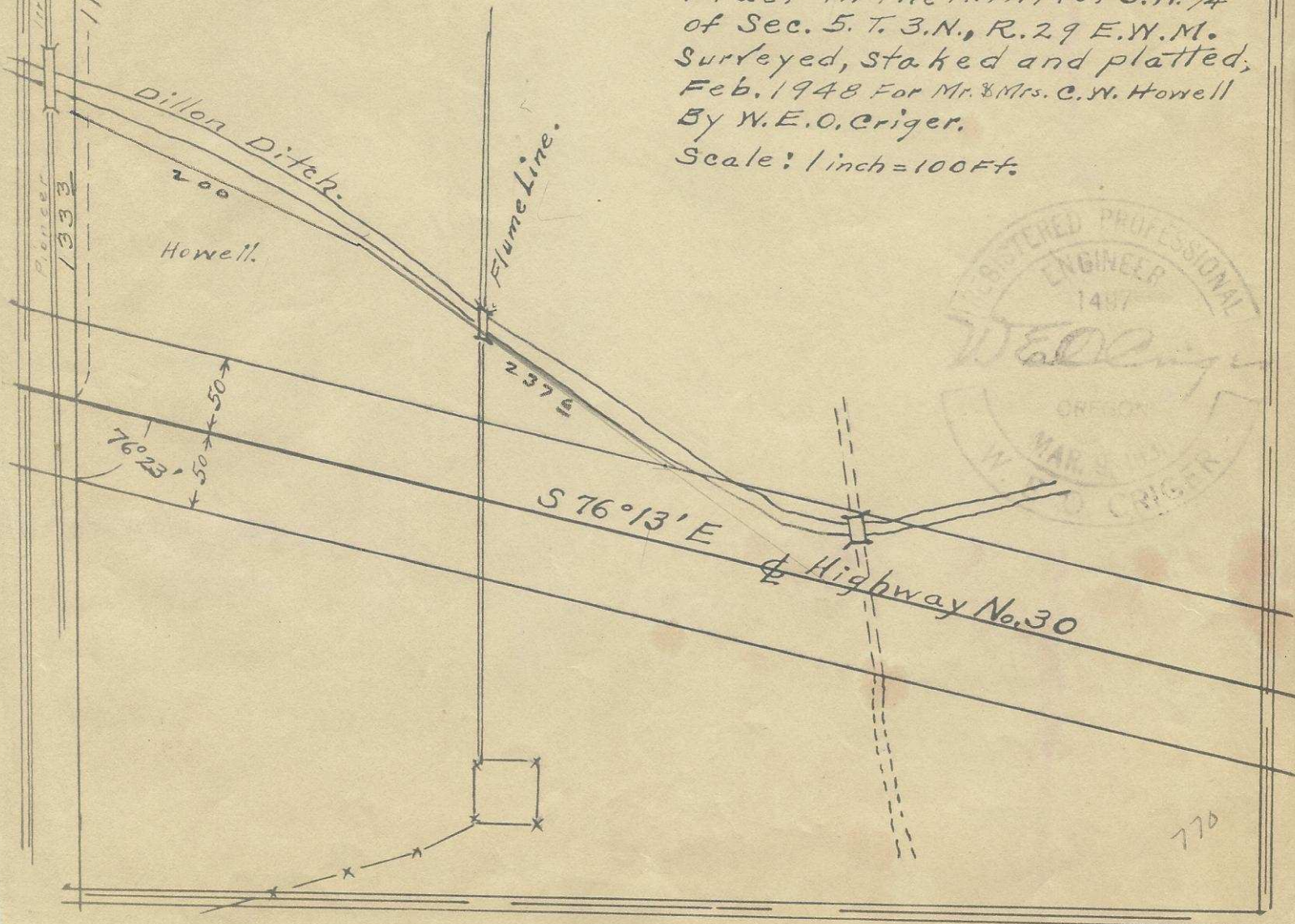
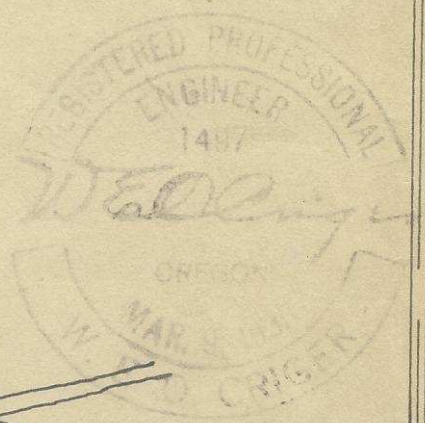
Pioneer
1933



G-507-AX

Jesse Corea - BK 88 - Pg 306

Plat Showing Descriptive
Tract in the N.W. 1/4 of S.W. 1/4
of Sec. 5. T. 3. N., R. 29 E. W. M.
Surveyed, staked and platted,
Feb. 1948 For Mr. & Mrs. C. W. Howell
By W. E. O. Criger.
Scale: 1 inch = 100 ft.



770