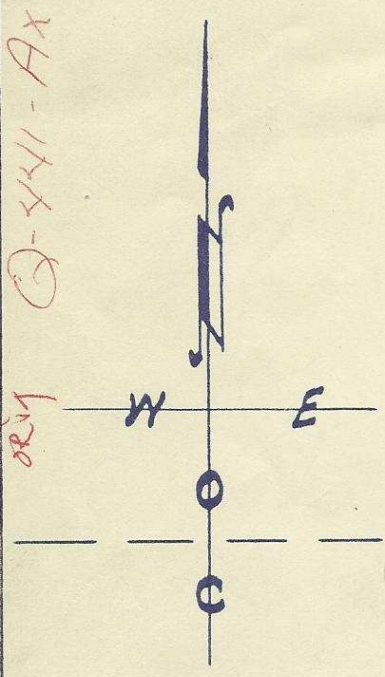
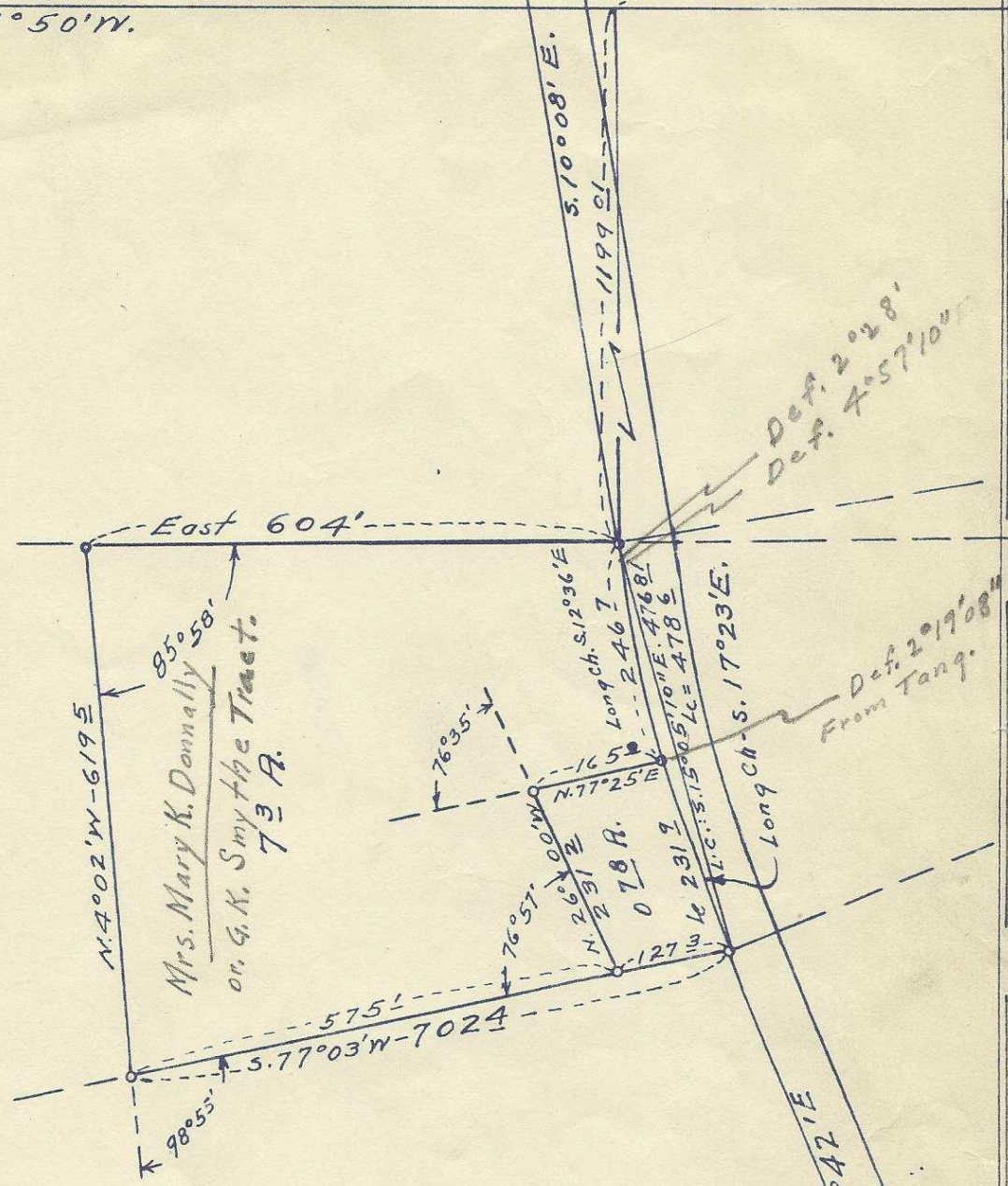


N. Line of Sec. 21.
S. 89° 50' W.

2841 86 to N.E. Cor



Q-441-Ax



Filed 1/16/51

Map of tract located in
E/2 of N.W. 1/4 of Sec. 21, T. 2 N., R. 32 E. W. M.
Surveyed, staked & platted, Dec. 1950.
By W. E. O. Criger.

Scale: 1 inch = 200 Feet.

Recorded Deed Book-173 P. 278.-

21BD

J. H. Criger

Lee Horn

912

Memorandum of Field Notes
On G. K. Smythe property McKay Cr.

I set up on an iron pin in place and located 2841⁸⁶ ft. west and 51199⁰¹ ft. south of the N. E. Cor. of Sec. 21, T. 2 N., R. 32 E., W. M., Then took a backsight of N. 10° 08' W. to a point on the W. R/W. line of the Ore-Wash. Hwy., which is the point of beginning, and also a point of curve on the W. R/W. line of the Ore-Wash. Hwy., I then turned 2° 28' left on a front sight which is the def. for 2467 ft. of a 2° curve and set an iron pin and ran out the curve; I set up on said point and ran S. 77° 25' W. 165⁰⁰ ft. to an iron pin; then I ran S. 26° 00' E. 231⁰⁰ ft. to the S. line of the original Smythe tract and set an iron pin; then I ran S. 77° 03' W. 575⁰⁰ ft. to an old iron pin in place - (By a previous survey); then I ran N. 4° 02' W. 619⁵⁰ ft. and set an iron pin for the N. W. corner - (old pin could not be found; possibly erosion) - I then ran due east 604⁰⁰ ft. to the point of beginning.

This tract contains 73 acres ^{more or less}.

W E O Criger - 1/15/1951. -

Memorandum of Field Notes
on Lee Horn Survey. — McRay Cr.

I set up on an iron pine in
place and located 2841⁸⁶ ft. West
and 1199⁰¹ ft. South of the N.E. Cor.
of Sec. 21, T. 2 N., R. 32 E., W. M.
I then took a back sight of
N. 10° 08' W. which is a point on
the W. R/W. line of the Cr. Wash.
Highway; I then turned 52° 28'
left, on a F.S., which is the Def. for
246² ft. of a 2° curve and the
point of beginning of the tract;
this gives a long chord bearing
of S. 12° 36' E., to said 2° curve.

I then ran around a 2°
curve left on said W. R/W. 231⁹ ft.
Long chord of said 2° curve bearing

S. 17° 23' 08" E. and set an iron pine
I then ran S. 77° 03' W. on the
South line of the Survey the tract
127³ ft. and set an iron pine

I then ran N. 26° 00' W. 231² ft.,
and set an iron pine for the N.W. Cor.
of the tract;

I then ran N. 77° 25' E. in a
direct line 165⁰ ft. to the
point of beginning

W. C. Wright — 1/15/1951.