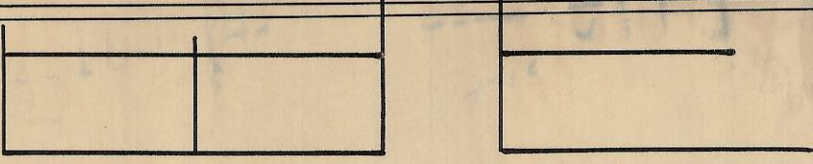


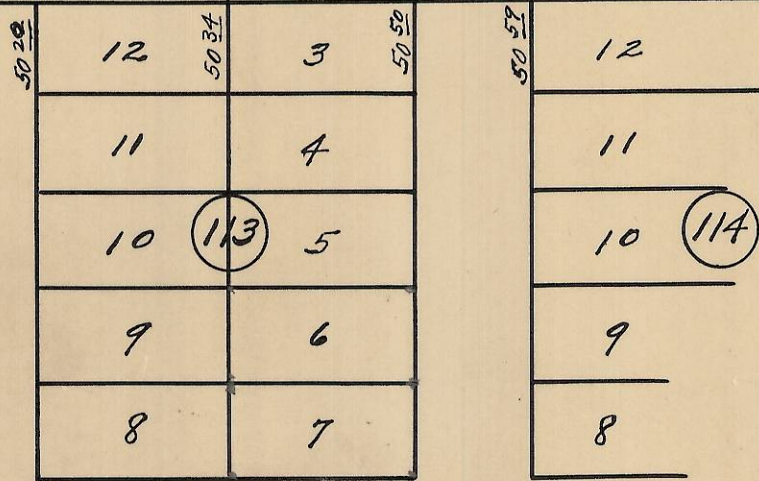
4



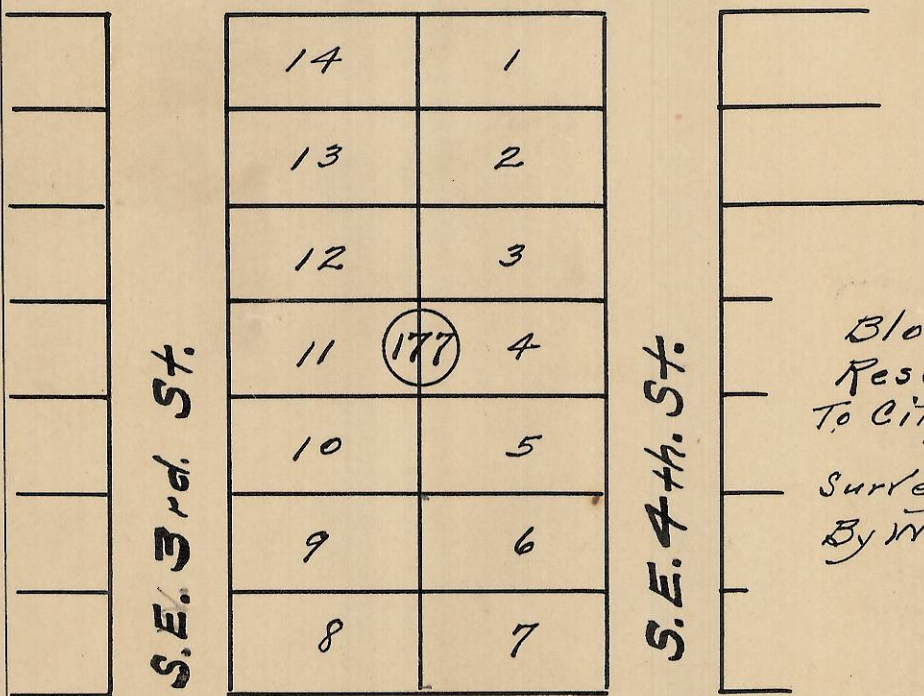
S. E. Frazier Ave.

Railroad Grounds.

O. R. & N. Co's R. R. Right of Way.



S. E. Goodwin Ave.



S. E. 3rd St.

S. E. 4th St.

Plat of
 Block 113 and 177 of
 Reservation Addition
 To City of Pendleton, Oregon.
 Scale: 1 inch = 100 Feet.
 Surveyed & Platted
 By W. E. O. Criger, Ore. Reg. C.E.
 No. 1497.

S. E. Hailey Ave.

Q-0325-AX