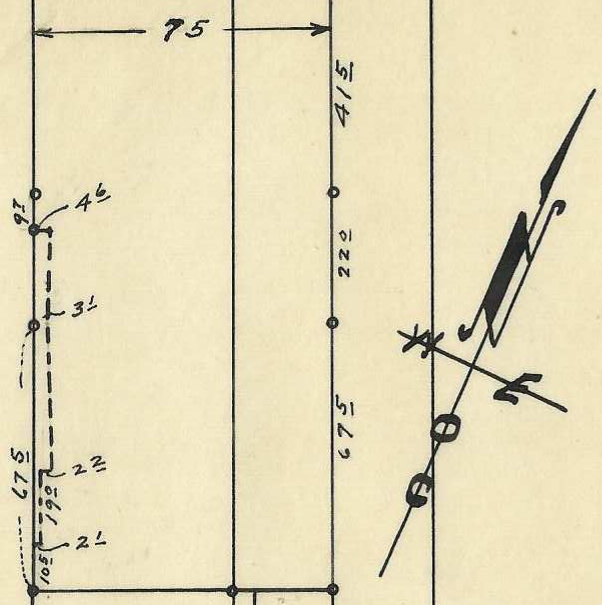


60

LADOW'S

ADDITION



60

1
50

2
"

3
50

4
5 20 25

5
50

6
50

S. E. BYER'S AVE.

REGISTERED PROFESSIONAL
ENGINEER
157
50
W. E. O. CRIGER

2N322CC

Q-97-Ax

OREGON
MAR. 9, 1931
W. E. O. CRIGER

Plat showing fence location and encroachment upon Lot 3, Block 1, Ladow's Addition to Pendleton, Ore., Scale: 1 inch = 50 feet. Surveyed, staked & platted, July, 1948. By W. E. O. Criger.