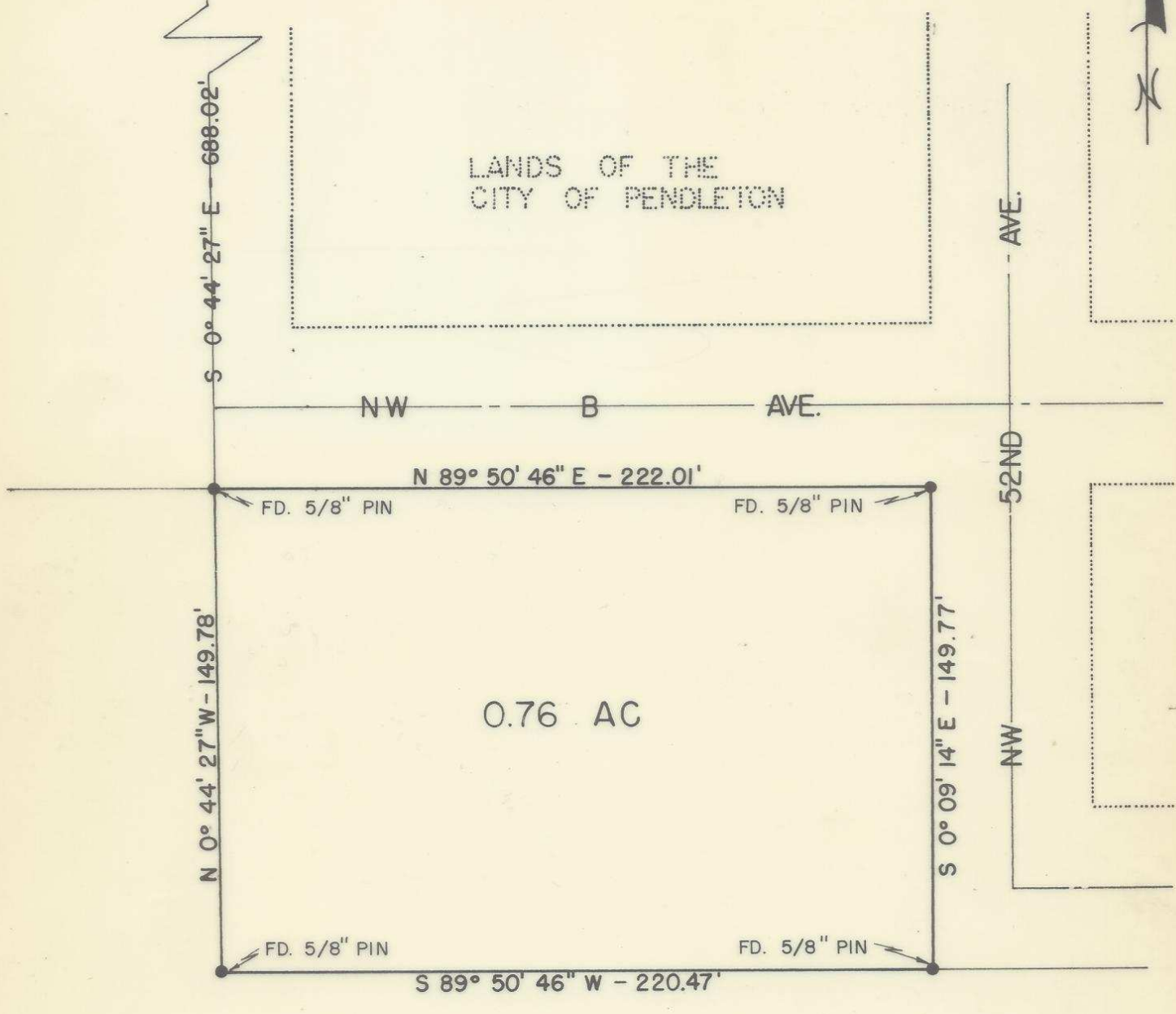


T3N R32 E.W.M.
T2N R32 E.W.M.

LANDS OF THE
CITY OF PENDLETON



0.76 AC

LANDS OF THE
PORT OF UMATILLA

P-84

NOTE: ALL INFORMATION SHOWN IS BASED ON
PENDLETON LOCAL GRID

REGISTERED
PROFESSIONAL
LAND SURVEYOR
Gerald L. O'Dman
OREGON
SEPT. 23, 1977
GERALD LEE ODMAN
1280

CITY OF PENDLETON ENGINEERING DEPT.		
SURVEY FOR PORT OF UMATILLA		
DATE: 8-7-78	SCALE: 1" = 50'	SHEET 1 OF 1
DN. <i>FLV</i>	CKD. <i>510</i>	DWG. NO.

P-84-A2