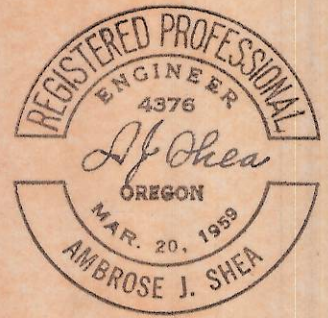
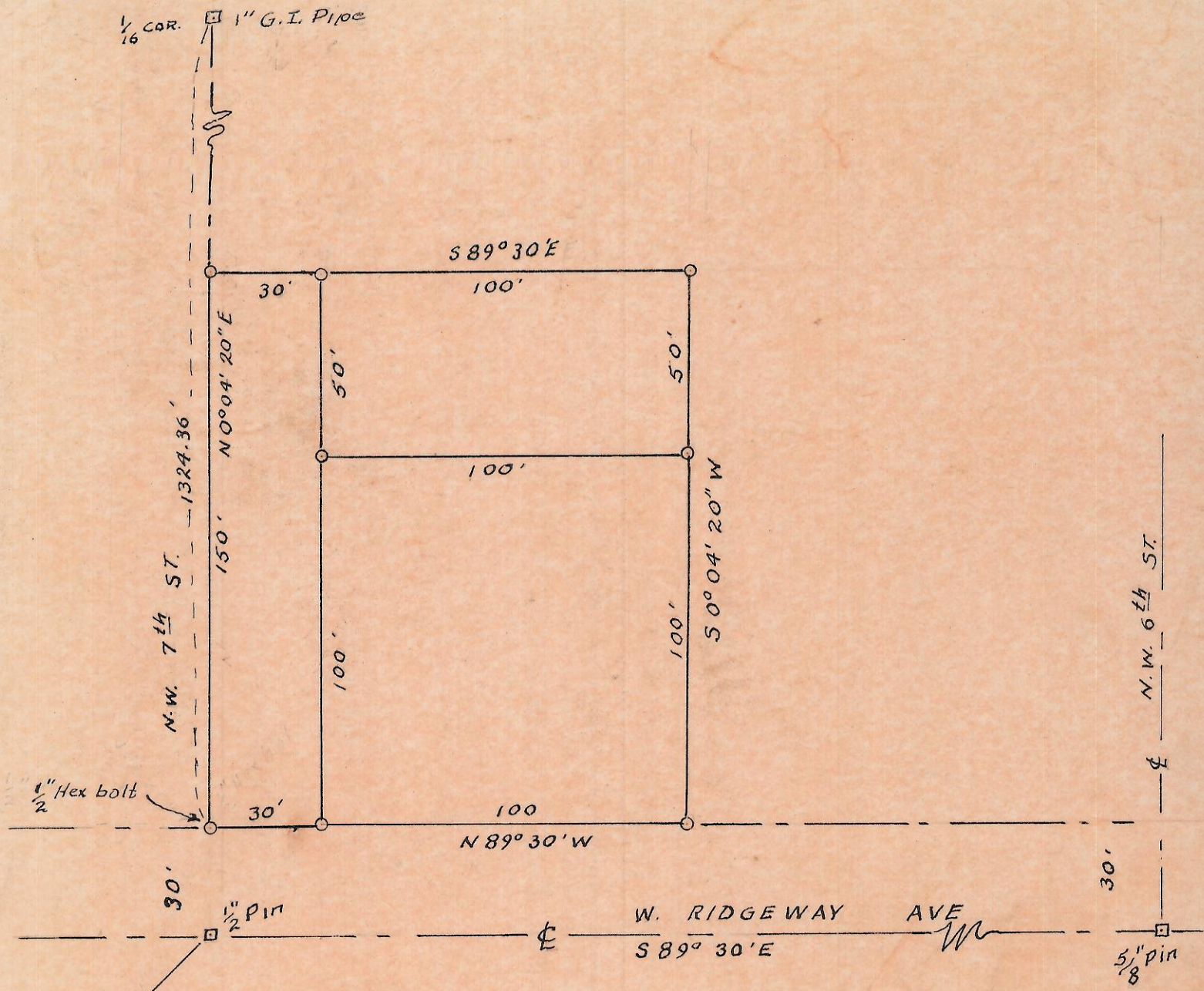


D-10-Ax



N-10

ctr. Sec 10

LEGEND:  
 □ POINTS FOUND AS DESCRIBED  
 ○ POINTS SET 1/2" x 24" REBARS OR AS NOTED  
 BEARINGS BASED ON E/W  $\phi$  OF SEC. 10  
 ON COUNTY TAX MAPS GIVEN AS 589°30'E

SURVEY PLAT OF TRACTS  
 IN SW 1/4 / NE 1/4 SEC. 10, T4N, R28E, W.M.  
 CITY OF HERMISTON  
 FOR JAMES B. HENDERSON  
 SCALE 1" = 40' 9-30-77