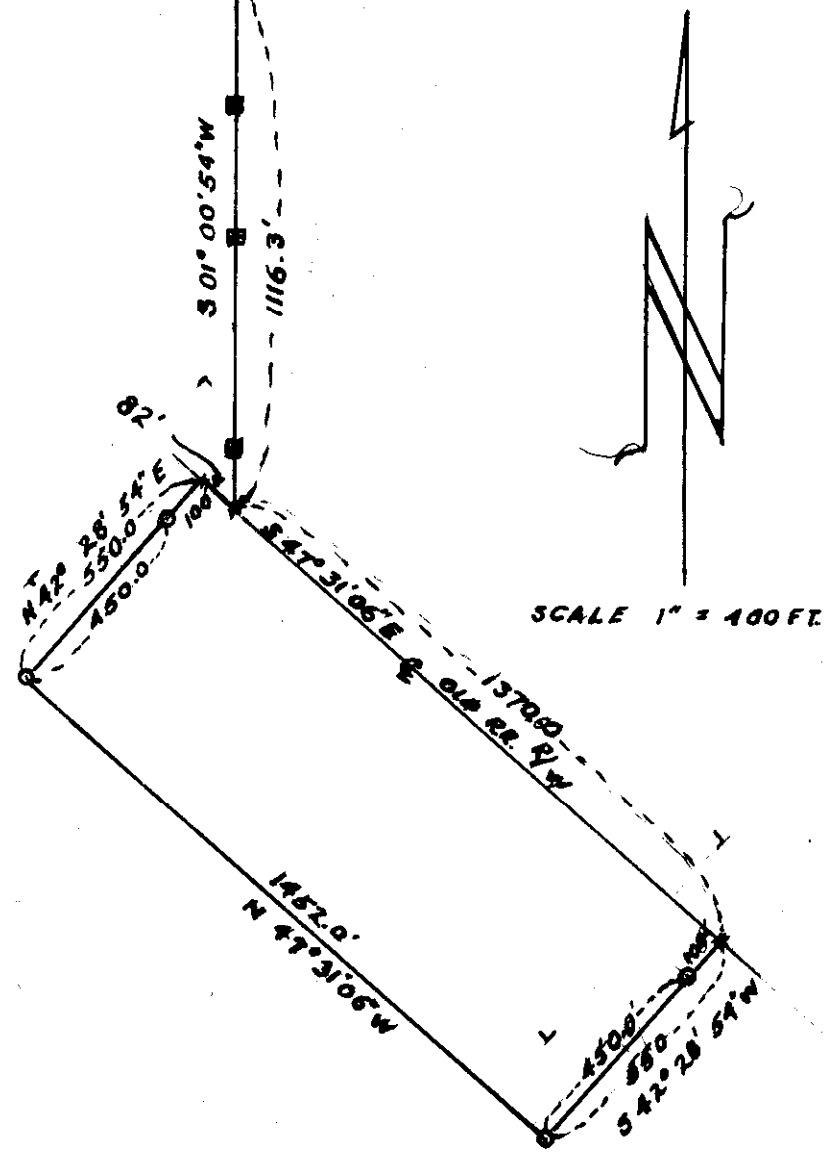


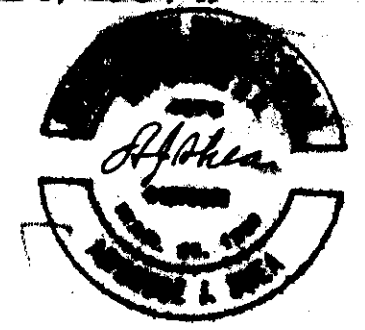
J-12-A-X

W $\frac{1}{4}$ Cor. \square Rebar in concrete $\frac{1}{2}$ " G.I. Pipe \square E $\frac{1}{4}$ Cor.



LEGEND:

- \square POINTS FOUND - NOT C.O.F.E. MONUMENTS
 - \square C.O.F.E. MONUMENTS (BRASS CAP SET IN CONC.)
 - \circ POINTS SET $\frac{1}{2}$ " \times 24" REBARS OR AS DESCRIBED
 - \ast POINTS OF PROPERTY DESCRIPTION - NOT MONUMENTED
- BEARINGS BASED ON N/S $\&$ OF SECTION BEING $301^{\circ}00'54''$ W



3/4/75

SURVEY PLAT OF HAT ROCK CAMP GROUND
 IN S $\frac{1}{2}$ OF SEC. 15, T 5N, R 29E W.M.
 FOR PERRY REID (OWNER)
 TO CORRECT ERRONONEOUS TIE TO CENTER OF
 SECTION IN A PREVIOUS SURVEY BY OTHERS.