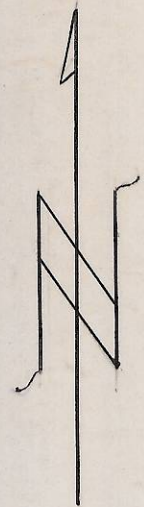
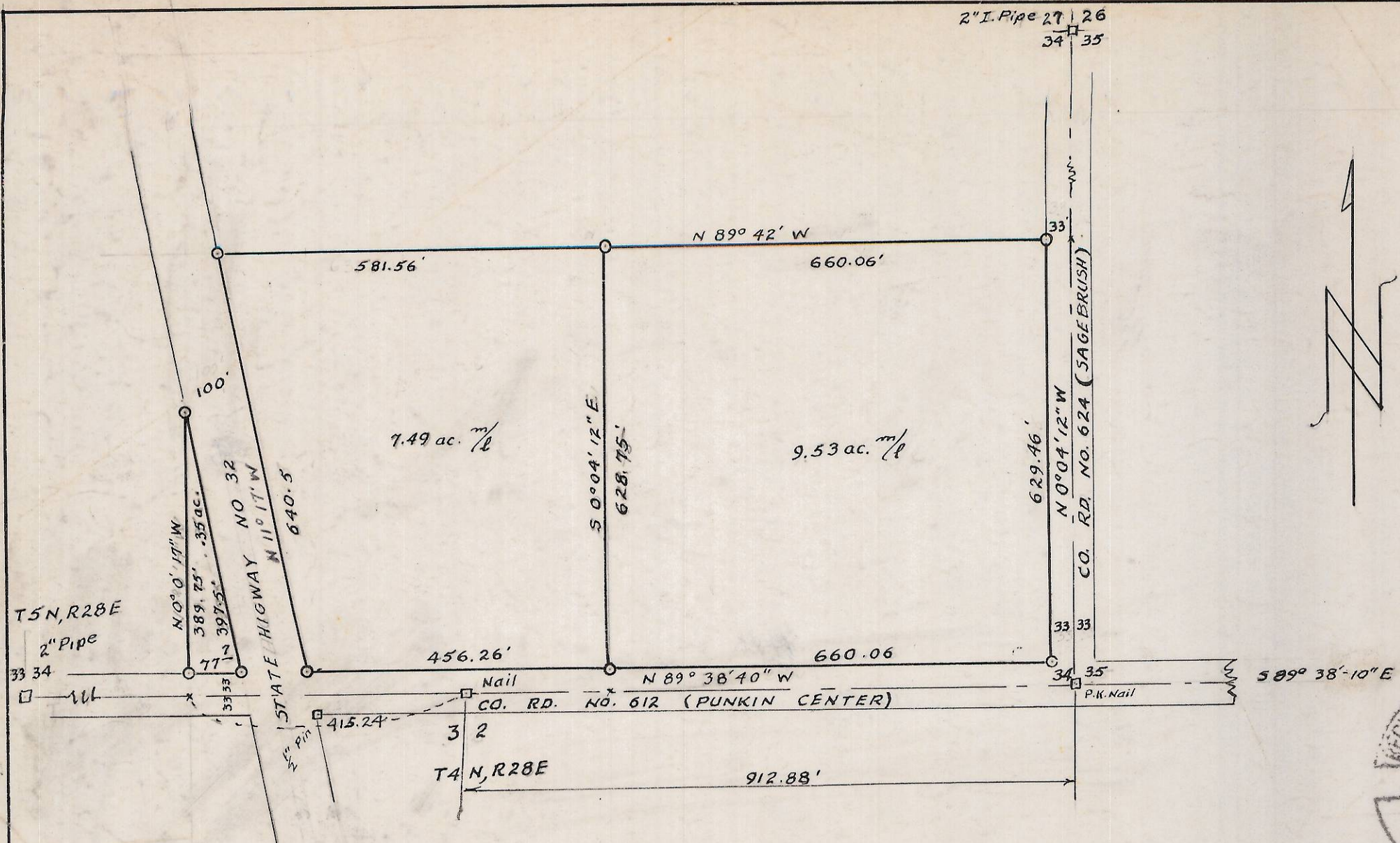


75-1-J-1



LEGEND  
 □ POINTS FOUND AS NOTED  
 ○ POINTS SET 1/2" x 24" REBAR  
 x TRANSIT POINTS ON SEC. LINES  
 BEARINGS BASED ON EAST LINE  
 OF SECTION 34 = N 0° 04' 12" W



75-1-J-1

SURVEY PLAT OF  
 S 1/2 OF SE 1/4 OF SE 1/4 SEC. 34, T5N, R28E, WM.  
 UMATILLA COUNTY  
 FOR SAM GODWIN & TROY GRIFFIN  
 SCALE 1" = 200' 1-3-75