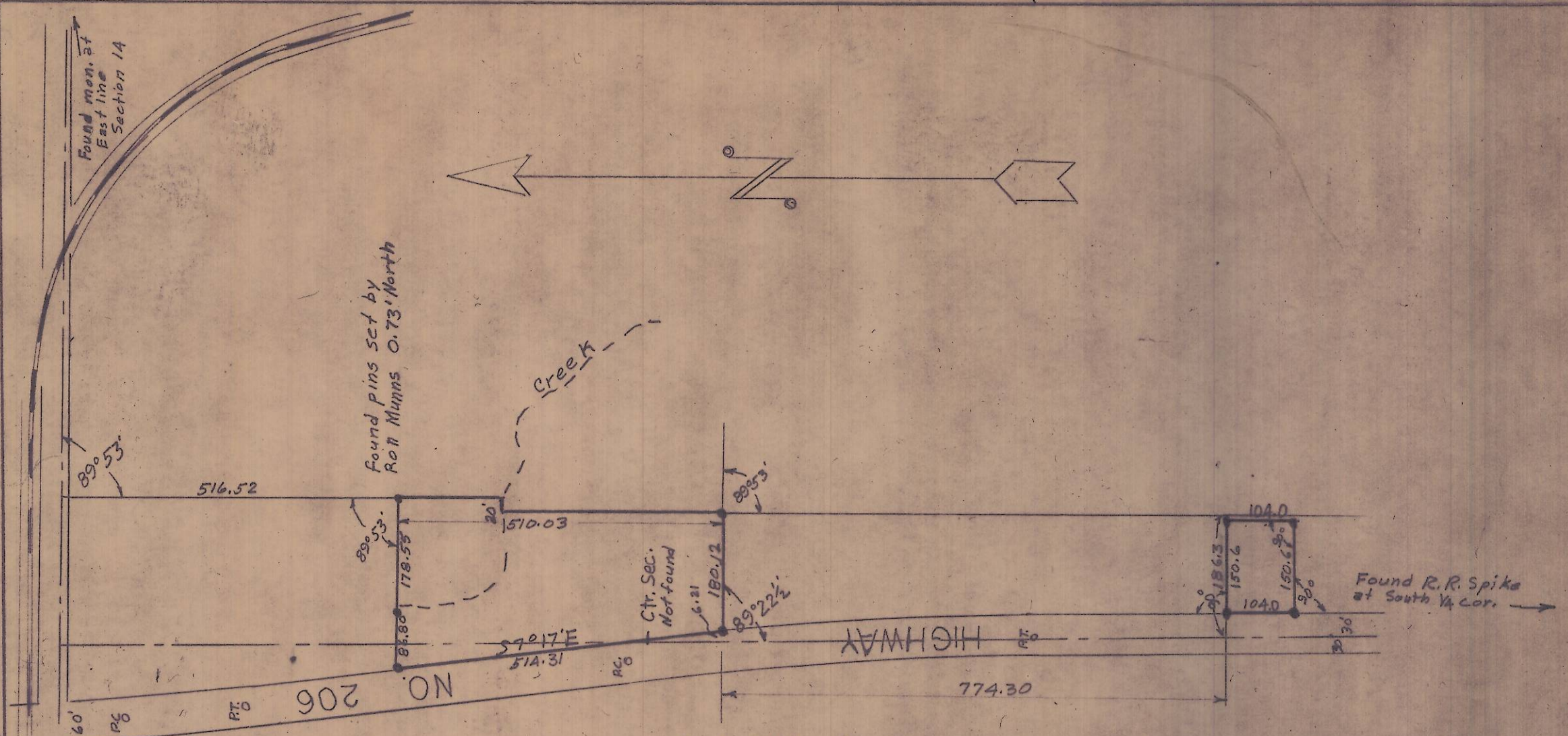


I-88-A



SURVEY FOR
 W.L. COLE & IRVING WHITMORE
 SECTION 14 T. 6 N., R. 35 E. W.M.
 Scale 1" = 200' Feb. 22, 1974

Guy W. Streamer, Jr.
 PROFESSIONAL ENGINEER



I-88

Survey 711 & 715