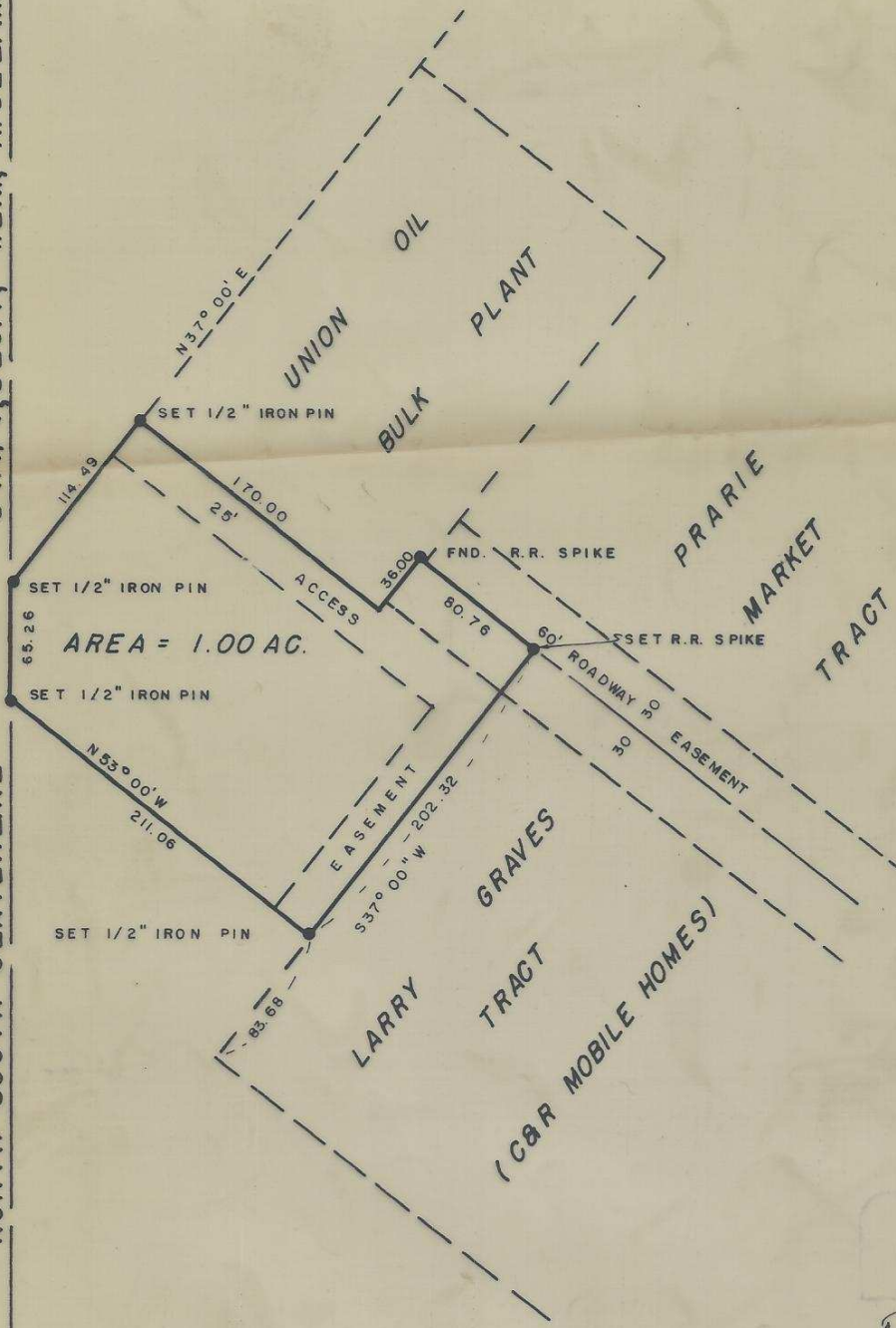


SW 1/4, SEC. 1, T. 2N., R. 32E. W.M.

NORTH-SOUTH CENTERLINE



David H. Kember
 DAVID H. KEMBER
 533

I-58

SURVEY FOR
 WOODPECKER TRUCK & EQUIPMENT
 SE 1/4, SW 1/4, SEC. 1, T2N, R32E W.M.

WAYNE HARRIS CO., INC.		PENDLETON OREGON		
SCALE	1"=100'	DRN. BY	<i>D.H.K.</i>	DRNG. NO
DATE	7-18-74	CKD. BY	<i>D.H.K.</i>	74-371

I-58-Ax