

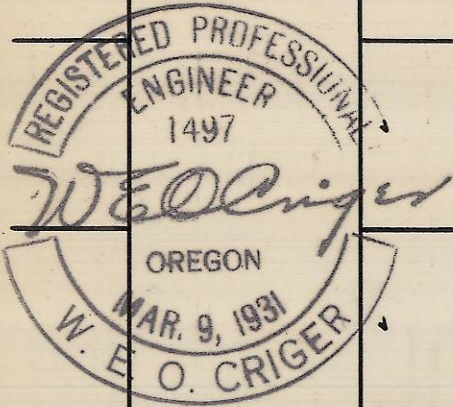
60

60

60

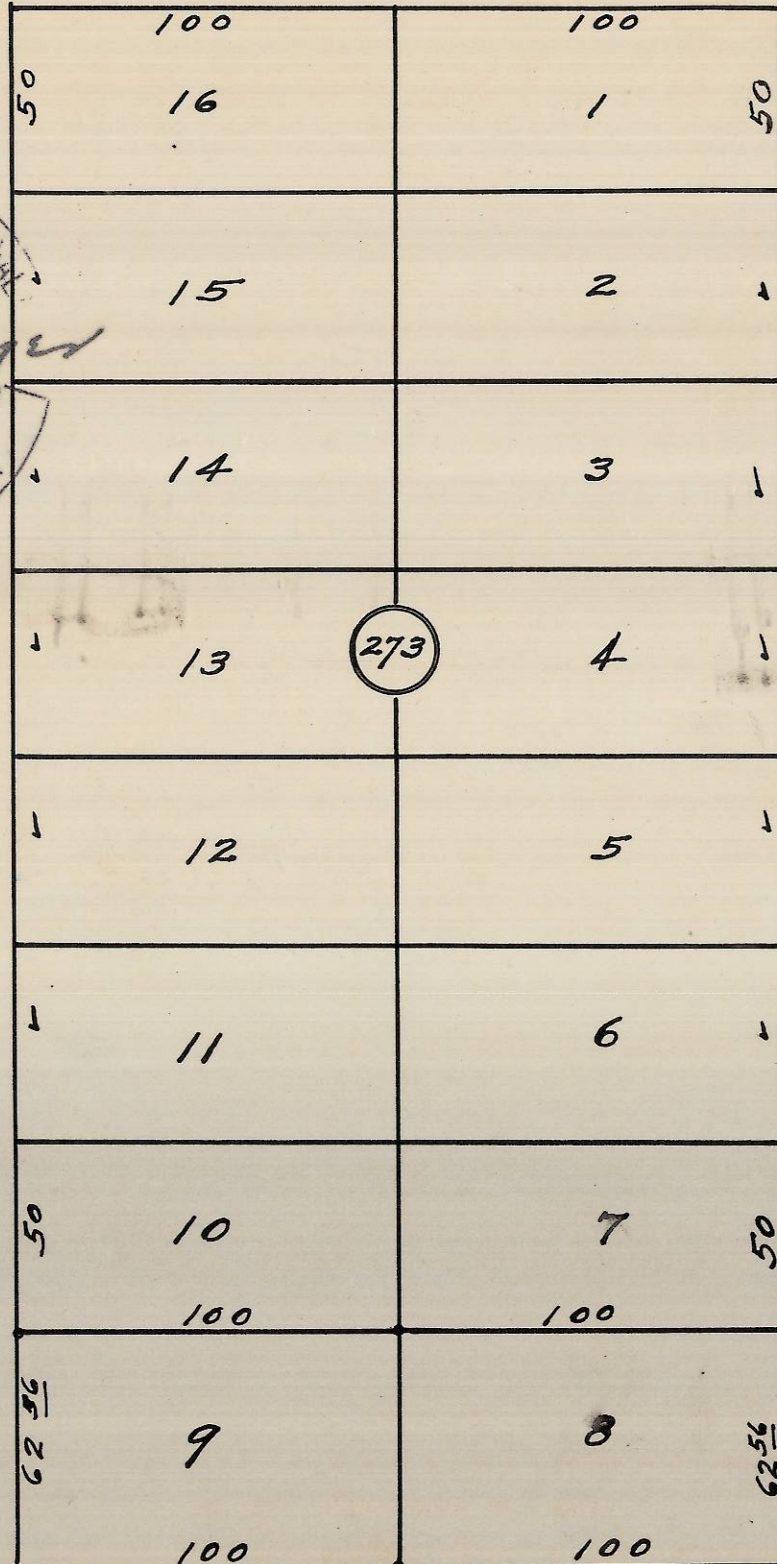
S. W. Isaac Ave.

60



S. W. 8<sup>th</sup> St.

S. W. 7<sup>th</sup> St.



Plat showing  
Block 273 of Reservation  
Addition to the town,  
Now city of Pendleton,  
Oregon -  
Surveyed, staked, & Platted  
June - 1950 - By W. E. O. Criger.  
Scale: 1" = 50'

Rec'd. South Boundary Res. Add.  
2/21/13  
J. Adair  
13-112-Ax

ZN 32 10 DD

4