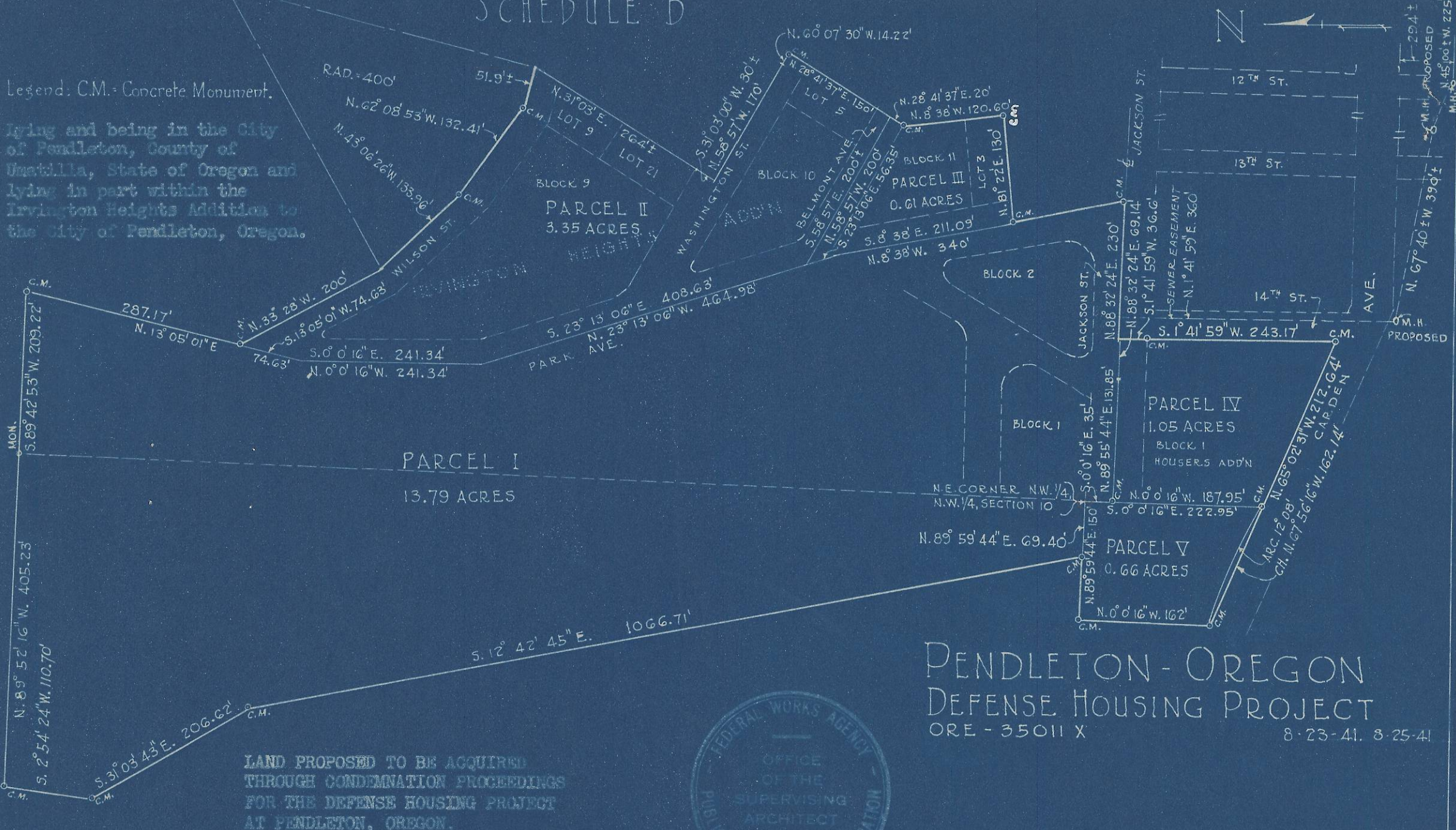


SCHEDULE "B"

Legend: C.M. - Concrete Monument.

Lying and being in the City of Pendleton, County of Umatilla, State of Oregon and lying in part within the Irvington Heights Addition to the City of Pendleton, Oregon.



PARCEL I
13.79 ACRES

PARCEL II
3.35 ACRES

PARCEL III
0.61 ACRES

PARCEL IV
1.05 ACRES
BLOCK I
HOUSERS ADDN

PARCEL V
0.66 ACRES

PENDLETON - OREGON
DEFENSE HOUSING PROJECT
ORE - 35011 X
8-23-41, 8-25-41



ADVANCE DATA & SURVEY UNIT

06451 AX

2N52030D

CUTS.