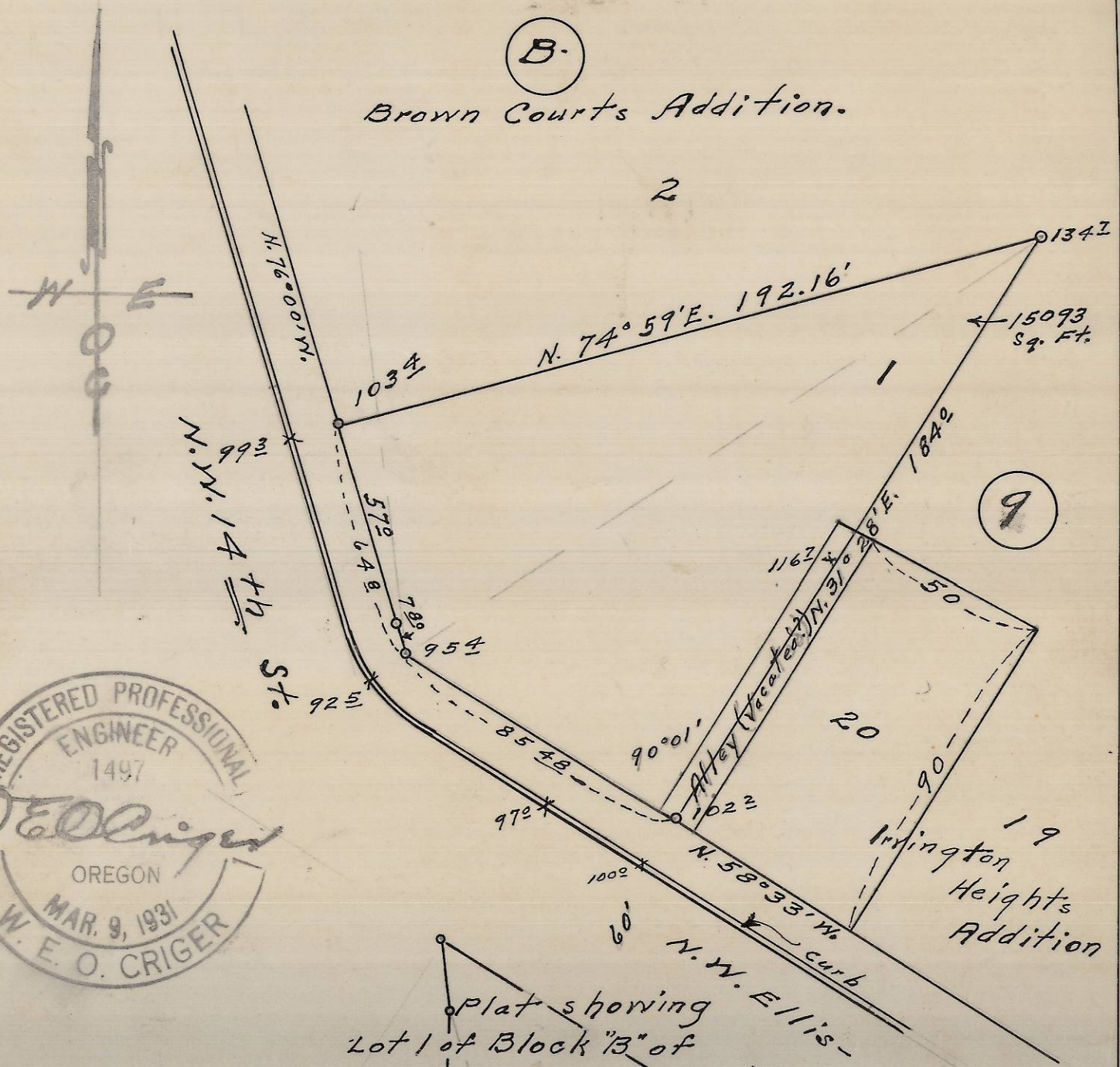


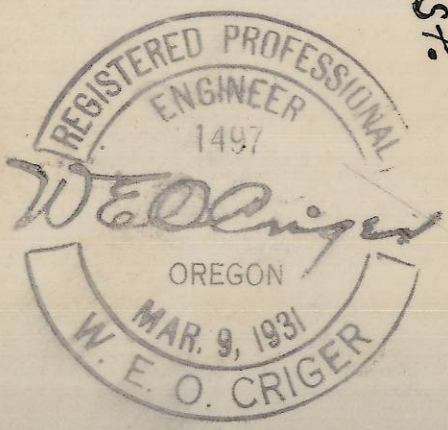
(B)

Brown Courts Addition.

2



(9)



Plat showing
 Lot 1 of Block "B" of
 Browns Courts Addition
 To City of Pendleton, Oregon.
 Surveyed, staked & platted Nov. 5-1954.
 By W. E. O. Criger - Scale: 1 inch = 40 ft.

06-313-Ax

(4)