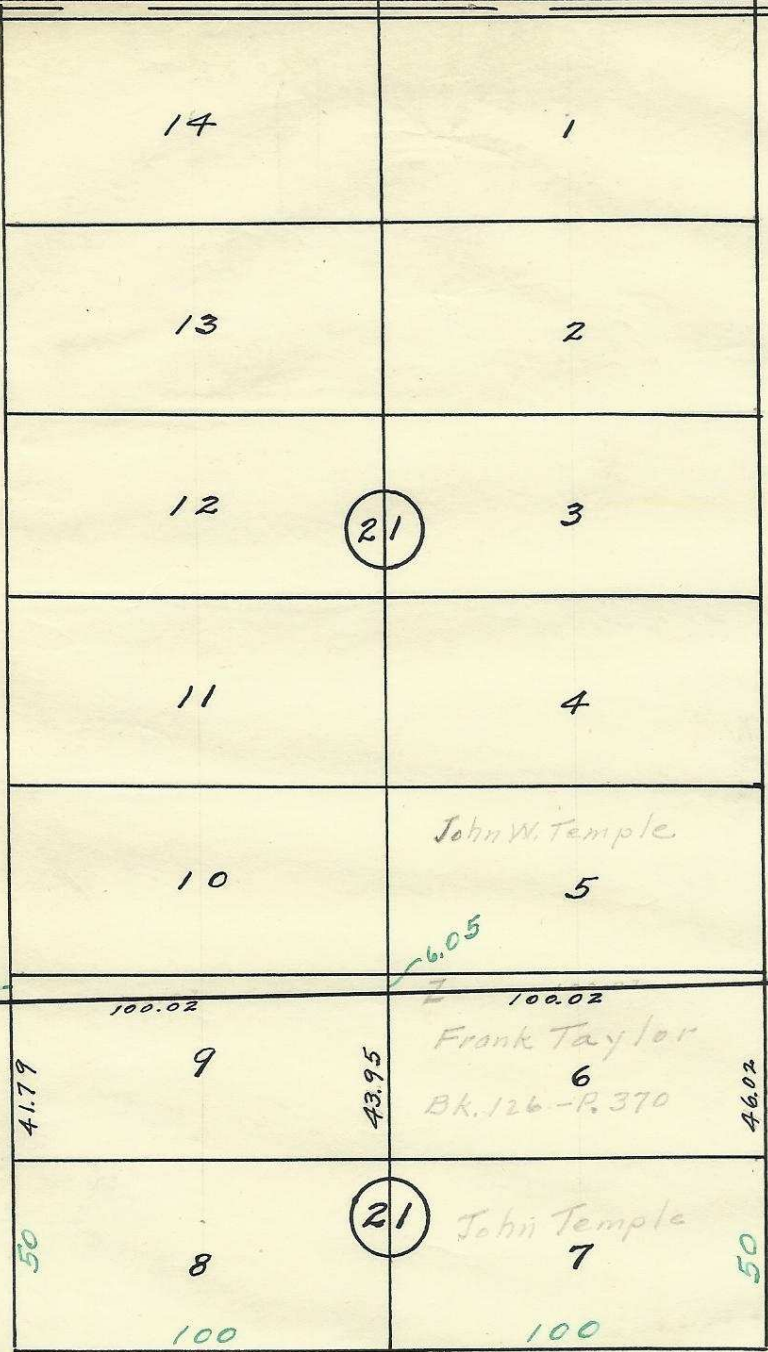
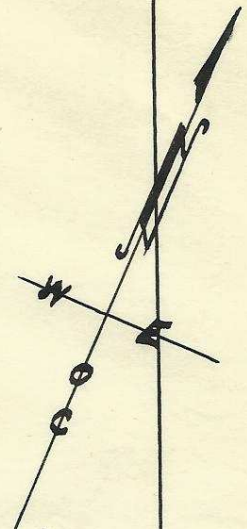


S. W. 6th St.

S. W. 5th St.



Arnold & Raley's Addition.
Boundary of Reservation Add.

S. W. Dorion Ave.

2N 3 2 10 AC



See B-126 - P. 370
See Bk. 21 - P. 31

Plat of Block 21 of
Reservation Addition and
Block 21 of Arnold & Raley's Add'n
to the town, Now City of Pendleton
Oregon.

Scale: 1 inch = 50 Feet.
Surveyed, Staked & Platted - April - 1948 -
By W. E. O. Criger.

06-283-Ay