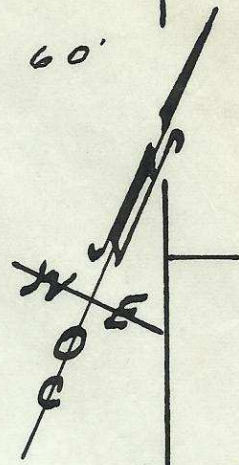
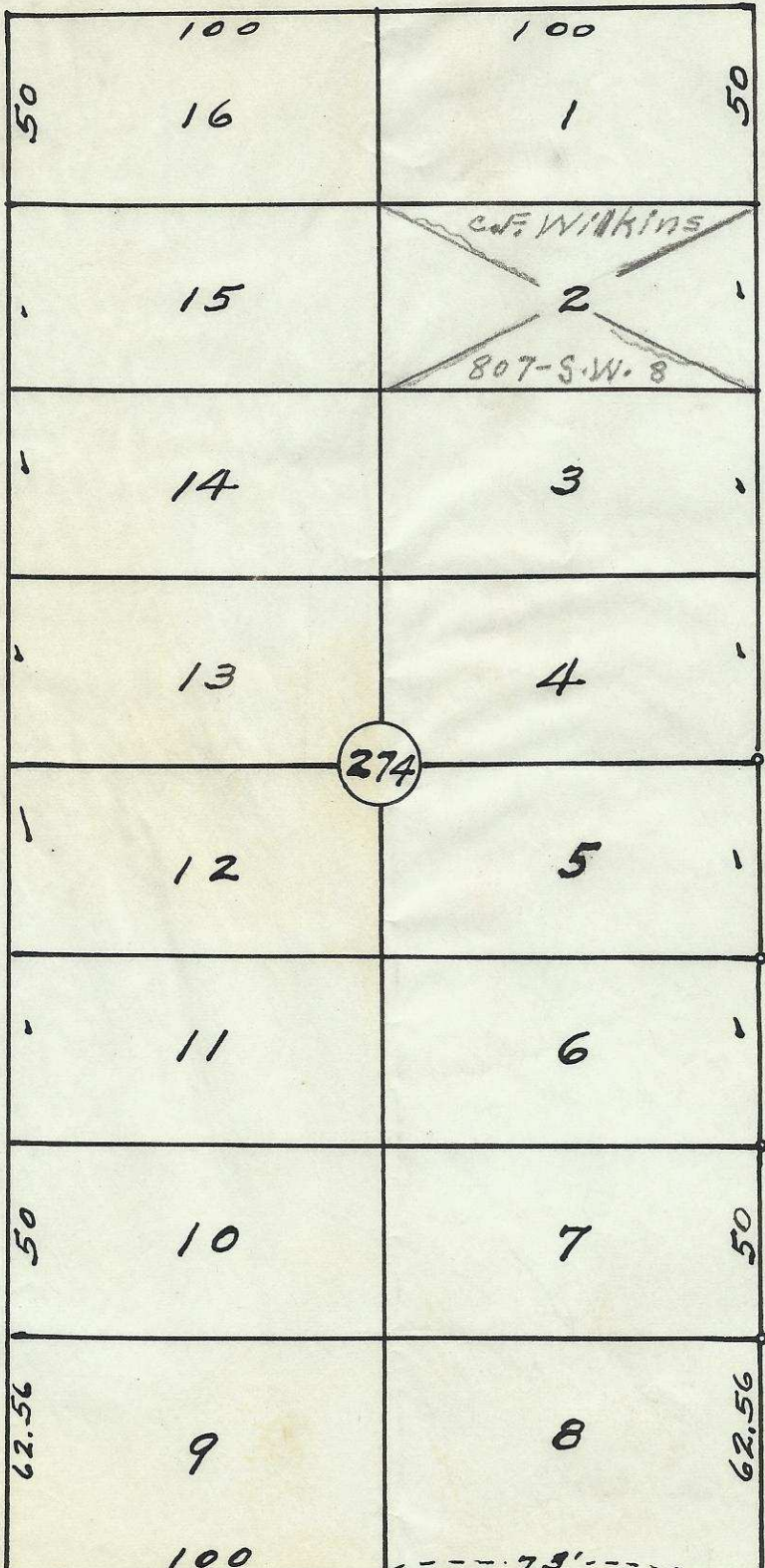


S.W. ISAAC AVE.

60

60

60'



Plat of Block 274 of Reservation Addition to the town, now City of Pendleton, Oregon  
 Scale: 1 inch = 50 Feet.  
 Surveyed, staked & platted 1949- By W.E.O. Criger.

S.W. 9th ST.

S.W. 8th ST.



60

60

Reservation Boundary.

2032 OPD

Mon. No. 7

06-229-Ax