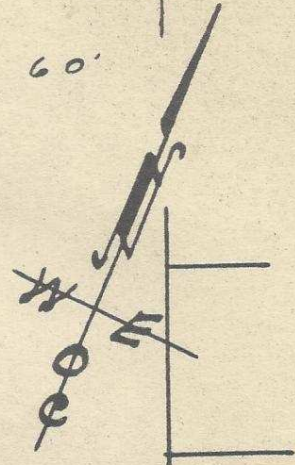
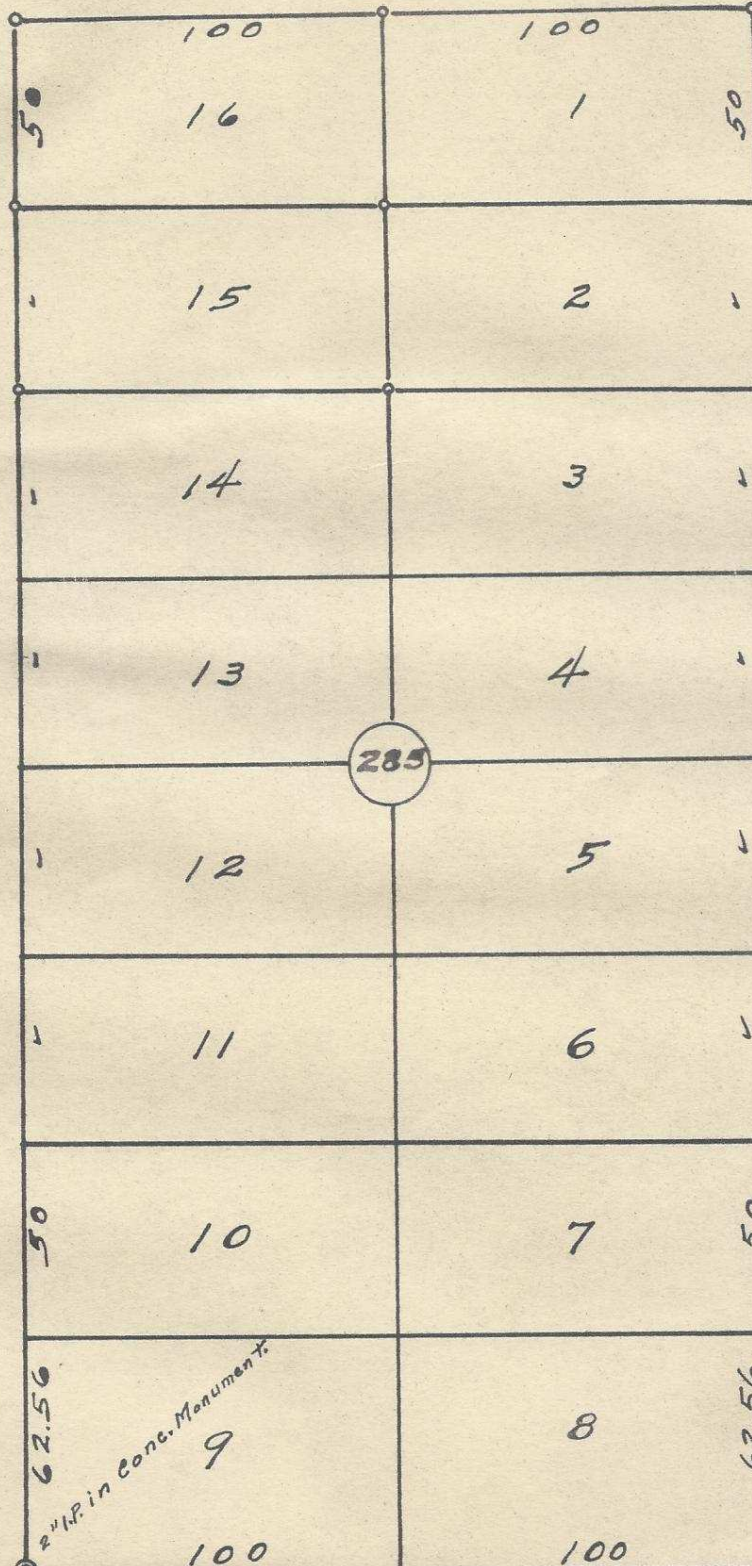


S.W. ISAAC AVE 60

60

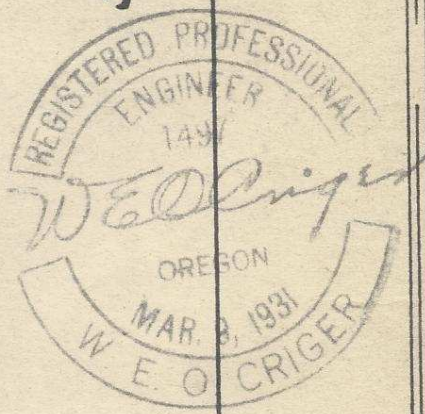
60



Map of
 Block 285 of
 Reservation Addition
 to the town, now City
 of Pendleton, Oregon
 Surveyed, Staked and
 Platted, Apr. 1950.
 By W.E.O. Criger.
 Scale: 1" = 50'

S.W. 20th ST.

S.W. 19th ST.



Reservation Addition Boundary.

2N3210CD

06-274-AX

Bert W. O'Neil.